

# VersaPOD<sup>®</sup>, V800<sup>™</sup> and V600<sup>™</sup> Cabinets

Including both the innovative VersaPOD family of data centre solutions, V800 (800mm) and V600 (600mm) cabinets, Siemon's comprehensive line of cabinets deliver the design flexibility and options to deploy the physical infrastructure you need.

In addition to the space saving, flexible VersaPOD and its Zero-U vertical cable management, patching and power distribution accessories, be sure to check out the many innovations appearing in this section:

- **SidePOD<sup>™</sup> and Baffle** — Unique VersaPOD accessories designed to support thermally efficient airflow for side-venting equipment such as the Cisco Nexus 7018 Series switches
- **Vertical Exhaust Ducts (Chimneys)** — Compatible with VersaPOD (VP2), V800 (V82) and V600 (V62) cabinets, these chimneys bring VersaPOD's thermal capacity to 13kW
- **42U Options** — Full-featured VersaPOD cabinets are available in 42U and 45U sizes, and V800/V600 cabinets are available in 42U, 45U and 48U versions

## Section Contents

VersaPOD Features and Benefits . . . . .	10.1
VersaPOD Cabinet . . . . .	10.2
Cabinet Doors and Panels . . . . .	10.2
VersaPOD Zero-U Sliding Patch Panels . . . . .	10.3
VersaPOD Zero-U Cable Management . . . . .	10.4
VersaPOD End-of-Row Vertical Panels . . . . .	10.5
Vertical Exhaust Duct . . . . .	10.5
VersaPOD Zero-U Accessories . . . . .	10.6
SnapFit <sup>™</sup> Thermal Blanking Panels . . . . .	10.6
Cabinet Accessories . . . . .	10.7
VersaPOD (VP2A) SidePOD <sup>™</sup> and Baffle . . . . .	10.8 - 10.9
V800 Cabinet and Accessories . . . . .	10.10 - 10.13
V600 Cabinet and Accessories . . . . .	10.14 - 10.15
Wall Mount Cabinet . . . . .	10.16- 10.17

# VersaPOD® Features and Benefits

Siemon's VersaPOD enables an innovative and efficient approach to your physical data centre infrastructure. By leveraging the vertical space between bayed cabinets and at the end of row for patching, power distribution and cable management, the VersaPOD frees critical horizontal space for active equipment, providing improved air flow while optimising data centre floor space.

The VersaPOD's Zero-U vertical patch panels (VPP's) dramatically simplify even the most dense patching needs while its vertical patching channels (VPC) offer a clean, orderly and easy method of high-density cable routing.

All of the VersaPOD's unique features are integrated into a full-featured modular enclosure that is equally effective as a standalone cabinet or in a multi-unit bayed configuration, offering a simple, scalable expansion path in any data centre.

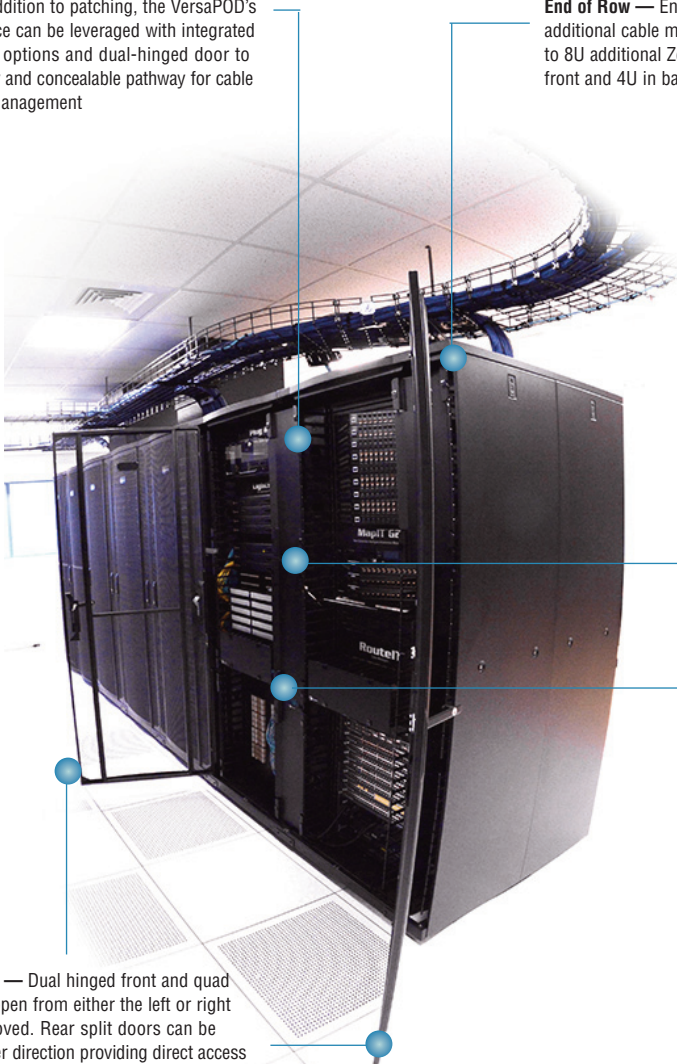
**Integration** — In addition to patching, the VersaPOD's Zero-U vertical space can be leveraged with integrated cable management options and dual-hinged door to offer a high capacity and concealable pathway for cable routing and slack management

**End of Row** — End of row vertical panels offer additional cable management channels or up to 8U additional Zero-U mounting space (4U in front and 4U in back at each end)

**Vertical Patching** — Vertical copper and fibre patch panels provide up to 24U (12U at front and 12U at rear) of Zero-U vertical patching space between every two cabinets. These panels conveniently slide forward providing access to the connections at the rear of the panel

**Cable Management** — Vertical cable management fingers can be mounted alongside each VPP or VPC to facilitate routing of copper or fibre jumpers between patching fields as well as cabinet to cabinet connections

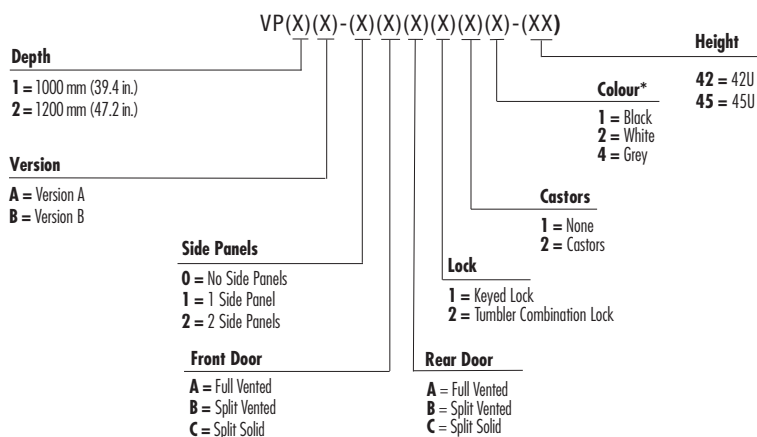
**Dual Hinged Doors** — Dual hinged front and quad hinged rear doors open from either the left or right and are easily removed. Rear split doors can be hinged open in either direction providing direct access to vertical spaces. For standalone cabinets or end units, side panels can be removed for full side access



# VersaPOD® Cabinets

The VersaPOD cabinet is designed to integrate with Siemon's comprehensive assortment of Zero-U vertical and horizontal cable management accessories, Zero-U vertical patch panels and thermal management products, offering multiple top and bottom cable access points and mounting provisions for fans, brush-guards and vertical exhaust ducts†. The VersaPOD cabinet is available in both 42U and 45U heights and in 1000mm and 1200mm depths and a wide array of door, side panel and lock options.

† Vertical exhaust ducts compatible with 1200mm depth VP2 only.



\* Note: White and Grey cabinets and accessories available in July 2017.

Includes: 4 levelling feet, 50 M6 cage nuts, 50 combo M6 screws with cup washers, 1 cage nut removal tool, 1 combo torx/philips head screwdriver, 13/14mm wrench, door/side panel keys and 4 stabilising brackets

<b>Height *</b>	42U: 2016mm (79.4 in.) 45U: 2150mm (84.6 in.)
<b>Width</b>	762mm (30.0 in.)
<b>Depth</b>	VP1: 1000mm (39.4 in.) VP2: 1200mm (47.2 in.)
<b>Weight**</b>	42U VP1: 143 kg (316 lbs.) / VP2: 157kg (347 lbs.). 45U VP1: 150 kg (331 lbs.) / VP2: 163kg (358 lbs.)
<b>Usable Depth (Rail-to-Rail) MAX</b>	VP1: 615mm (24.2 in.) VP2: 815mm (32.1 in.)
<b>Load Rating</b>	Static: 1361kg (3000 lbs.) Dynamic: 1021kg (2250 lbs.)
<b>Base Type</b>	Open
<b>Colour</b>	Black (RAL 9011)
<b>% Door Perforation</b>	71%
<b>U Space Identification</b>	Yes
<b>Lid Cable Access Openings</b>	VP1A: 3 (large), 4 (small), 0 brushes VP1B: 3 (large), 0 (small), 4 brushes VP2A: 4 (large), 6 (small), 0 brushes VP2B: 4 (large), 0 (small), 4 brushes
<b>Material</b>	CRS of varying thickness
<b>Finish</b>	Textured powder coat
<b>Standard Compliance</b>	UL 60950-1 Ed 2.0, EIA/ECA-310-E, IP20

\*Nominal height with adjustable levelling feet or castors

\*\*Does not include packaging - add 33kg (72 lbs.) for packaging

## VersaPOD Cabinet Doors and Panels

Part #	Description
VPA-DRA-1-(XX)	Full vented door, dual handle with standard keyed lock
VPA-DRB-1-(XX)	Split vented door, dual handle with standard keyed lock, (Set of 2)
VPA-DRC-1-(XX)	Split solid door, dual handle with standard keyed lock, (Set of 2)
VP1A-S-1-(XX)	1000mm (39.4 in.) locking side panel kit
VP2A-S-1-(XX)	1200mm (47.2 in.) locking side panel kit

Use (XX) to specify height. 42 = 42U, 45 = 45U

# VersaPOD® Zero-U Sliding Patch Panels

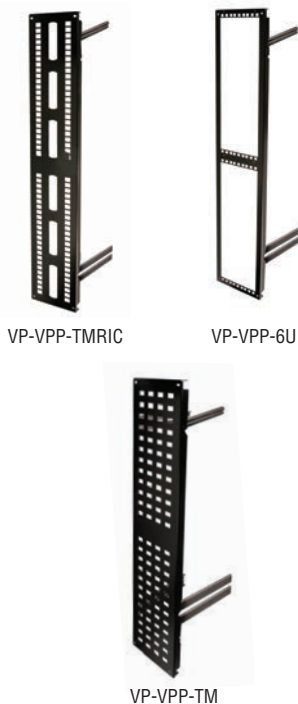
## 42U Triplex Zero-U Sliding Vertical Patch Panels



Part#	Description
VP-VP3U-1-42.....	Vertical 19 inch panel, 3U Mounts up to 3U of standard 19 inch panels or PDUs in vertical orientation
VP-VPTM-1-42.....	TERA®-MAX® vertical patch panel 48 Ports, supports all Category 5e and Category 6 MAX and Z-MAX®, Category 6A UTP and shielded Z-MAX, TERA outlets and MAX fibre adapters (port spacing compatible for Z-MAX 6A UTP)
VP-VPTMR-1-42.....	TERA-MAX RIC vertical patch panel 48 Ports, supports all Category 5e and Category 6 MAX and Z-MAX, Category 6A shielded Z-MAX outlets TERA® outlets and MAX fibre adapters (port spacing not compatible for Z-MAX 6A UTP) - 4 fibre RIC adapter mounting spaces for mounting RIC adapter plates or fibre Plug and Play modules
VP-VPR-1-42.....	RIC vertical patch panel 12 RIC adapter mounting spaces for mounting RIC fibre adapter plates or fibre Plug and Play modules

*Note:*  
 (3) VPPs/VPCs can be mounted vertically at the front and/or rear of 2 bayed cabinets or between a VersaPOD cabinet and SidePOD®  
 (3) VPPs/VPCs are required to fully populate 42U Zero-U space

## 45U Duplex Zero-U Sliding Vertical Patch Panels



Part#	Description
VP-VPP-6U.....	Vertical 19 inch panel, 6U Mounts up to 6U of standard 19 inch panels in Zero-U vertical orientation
VP-VPP-TM.....	TERA-MAX patch panel 96 Ports, supports all Category 5e Category 6, Category 6A UTP MAX and Z-MAX outlets, Category 6A shielded Z-MAX, TERA outlets and MAX fibre adapters (Port spacing compatible with Z-MAX 6A UTP)
VP-VPP-TMRIC.....	TERA-MAX-RIC vertical patch panel 96 Ports, supports all Category 5e and Category 6 UTP MAX and Z-MAX, Category 6A shielded Z-MAX outlets, TERA® outlets an MAX fibre adapters. (Not for use with Z-MAX 6A UTP) 6 fibre RIC adapter mounting spaces for mounting RIC adapter plates or fibre Plug and Play modules

*Note:*  
 (2) VPPs/VPCs can be mounted vertically at the front and/or rear of 2 bayed cabinets or between a VersaPOD cabinet and SidePOD  
 (2) VPPs/VPCs are required to fully populate 45U Zero-U space

# VersaPOD® Zero-U Cable Management

## 42U Triplex Zero-U Vertical Cable Management



Part #	Description
VP-VPC6-1-42 . . . . .	Vertical patching channel Includes back plate, 152mm (6 in.) cable management fingers and cover
VP-FGR6-1-42 . . . . .	152mm (6 in.) Vertical cable management fingers (set of 2) Can be mounted alongside each VPP and/or VPC to facilitate routing of copper and fibre jumpers between patching fields as well as cabinet to cabinet connections
VP-CVR-1-42 . . . . .	Vertical cover Hinged cover used in conjunction with vertical cable management fingers to conceal patching areas
VP1A-TRAY-1-42 . . . . .	Vertical cable management tray for 42U VP1A cabinets Manages/secures cable between cabinets, use 4 trays to isolate airflow between VP1A cabinets
VP2A-TRAY-1-42 . . . . .	Vertical cable management tray for 42U VP2A cabinets Manages/secures cable between cabinets, use 4 trays to isolate airflow between VP2A cabinets

**Note:**

- (3) VPP's/VPCs can be mounted vertically at the front and/or rear of 2 bayed cabinets or between a VersaPOD cabinet and SidePOD
- (3) VPPs/VPCs are required to fully populate 42U Zero-U space

## 45U Duplex Zero-U Vertical Cable Management



Part #	Description
VP-VPC6-1-45 . . . . .	Vertical patching channel Includes back plate, 152mm (6.0 in.) cable management fingers and cover
VP-FGR6-1-45 . . . . .	152mm (6.0 in.) Vertical cable management fingers, (set of 2) Can be mounted alongside each VPP and/or VPC to facilitate routing of copper and fibre jumpers between patching fields as well as cabinet to cabinet connections
VP-CVR . . . . .	Vertical cover Hinged cover used in conjunction with vertical cable management fingers to conceal patching areas
VP1A-TRAY-1-45 . . . . .	Vertical cable management tray for 45U VP1A cabinets Manages/secures cable between cabinets, use 4 trays to isolate airflow between VP1A cabinets
VP2A-TRAY-1-45 . . . . .	Vertical cable management tray for 45U VP2A cabinets Manages/secures cable between cabinets, use 4 trays to isolate airflow between VP2A cabinets

**Note:**

- (2) VPP's/VPCs can be mounted vertically at the front and/or rear of 2 bayed cabinets or between a VersaPOD cabinet and SidePOD
- (2) VPPs/VPCs are required to fully populate 45U Zero-U space



# VersaPOD® End-of-Row Vertical Panels

## 42U Triplex End of Row Zero-U Panels



Part #	Description
VP-VP1U-1-42 . . . . .	Vertical 19 inch panel, 1U Mounts 1U of standard 19 inch rack mount products
VP-EVPC6-1-42 . . . . .	VersaPOD end of row vertical patching with 6 in. fingers and cover, black Used to manage patch panel cords vertically at the end of a cabinet row
VP-BLNK1-1-42 . . . . .	Vertical blanking panel Used to block off unused spaces to prevent re-circulation of air

*Note:*  
(3) Vertical panels can be mounted vertically at the front and/or rear on each side of a single cabinet or at each end of multiple bayed cabinets.

## 45U Duplex End of Row Zero-U Panels



Part #	Description
VP-VPP-2U . . . . .	Vertical 19 inch panel, 2U Mounts up to 2U of standard 19 inch rack mount products
VP-EVPC6-1-45 . . . . .	VersaPOD end of row vertical patching with 6 in. fingers and cover, black Used to manage patch panel cords vertically at the end of a cabinet row
VP-BLNK1 . . . . .	Vertical blanking panel, end of row Used to block off unused spaces to prevent re-circulation of air

*Note:*  
(2) Vertical panels can be mounted vertically at the front and/or rear on each side of a single cabinet or at each end of multiple bayed cabinets.  
(2) End of row vertical panels are required to fully populate 45U Zero-U space

## Vertical Exhaust Duct (Chimney)

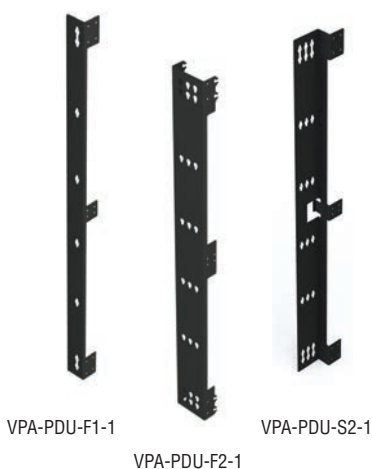


Part #	Description
VP-DUCT1 . . . . .	Vertical exhaust duct, 523 x 653 x 516-923mm (20.6 x 25.7 x 20.3-36.3 in.), black
VP-DUCT2 . . . . .	Vertical exhaust duct, 523 x 653 x 912-1320mm (20.6 x 25.7 x 35.9-52.0 in.), black

*Note:*  
Chimney compatible with 1200mm VersaPOD (VP2), V800 (V82) and V600 (V62) cabinets only.  
† Solid doors recommended for use with chimneys.

# VersaPOD® Zero-U Accessories

## Full Height Zero-U PDU Mounting Brackets



Part #	Description
VPA-PDU-F1-1 . . . . .	Front-facing, single PDU mounting bracket Supports mounting of (1) front-facing PDU in full height Zero-U spaces for end of row applications
VPA-PDU-F2-1 . . . . .	Front-facing, dual PDU mounting bracket Supports mounting of (2) front-facing PDU's in full height Zero-U spaces between bayed cabinets
VPA-PDU-S2-1 . . . . .	Side-facing, dual PDU mounting bracket Supports mounting of (2) side-facing PDU's. Can be used in either end of row or in full height Zero-U spaces between bayed cabinet

*Note: Compatible with 42U and 45U VersaPODs.*

## Zero-U Horizontal Cable Trough



Part #	Description
VPA-SPAN-1 . . . . .	Adjustable depth cable trough Used to route cables between the front and rear of cabinets. Mounts between vertical patching channels mounted to front and rear of cabinets

## Zero-U Blanking Panels



Part #	Description
VP-BLNK-1-42 . . . . .	Vertical blanking panel Used to isolate airflow in unused Zero-U spaces within 42U cabinets  <i>Note:</i> (3) VPP's/VPCs can be mounted vertically at the front and/or rear of 2 bayed cabinets or between a VersaPOD cabinet and SidePOD (3) VPPs/VPCs are required to fully populate 42U Zero-U space
VP-BLNK . . . . .	Vertical blanking panel Used to isolate airflow in unused Zero-U spaces within 45U cabinets  <i>Note:</i> (2) VPP's/VPCs can be mounted vertically at the front and/or rear of 2 bayed cabinets or between a VersaPOD cabinet and SidePOD (2) VPP's/VPCs are required to fully populate 45U Zero-U space

## SnapFit™ Thermal Blanking Panels



Part #	Description
PNL-TBLNK010-1S . . . . .	19 inch SnapFit thermal blanking panel, 1U, black, (box of 10)
PNL-TBLNK100-1S . . . . .	19 inch SnapFit thermal blanking panel, 1U, black, (box of 100)

## Accessories



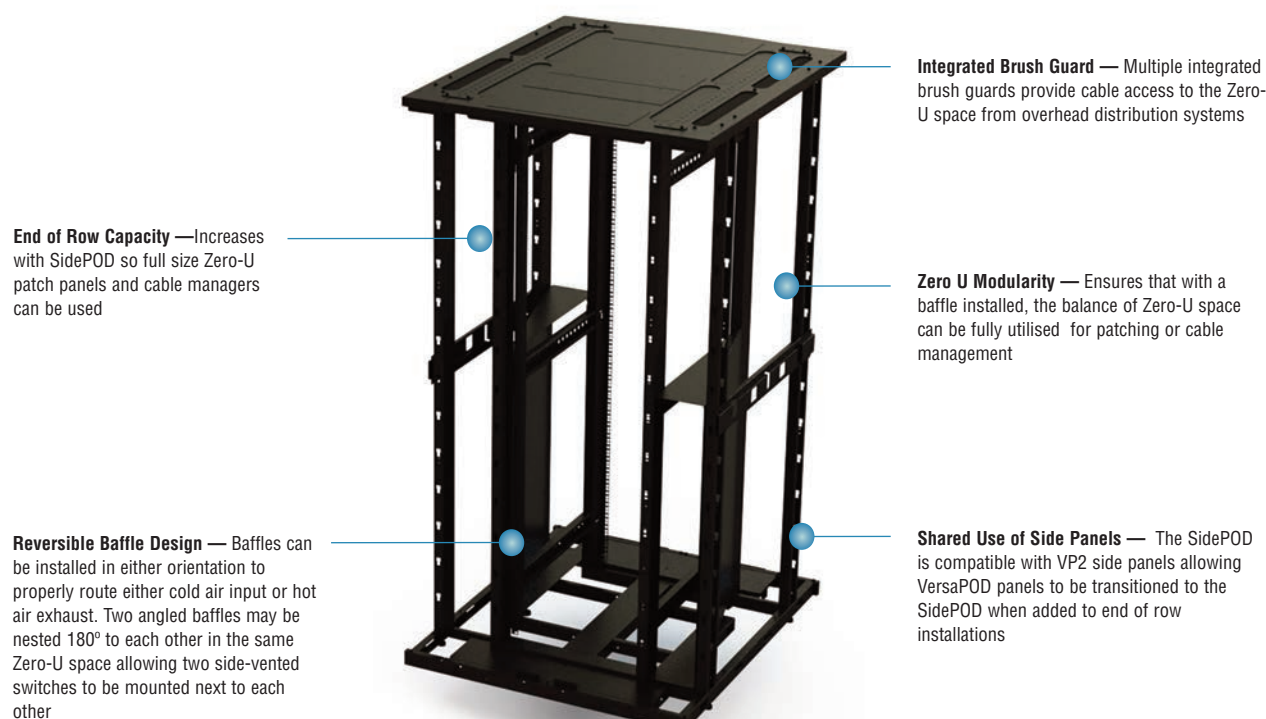
Part #	Description
VPA-R-1-(XX)	VersaPOD equipment mounting rails (set of 2), black Use (XX) to specify height. 42 = 42U, 45 = 45U
VP-FAN	Top-mount cooling fan panel - 3 fans x 110CFM, 120VAC w/ NEMA 5-15P plug
VP-FAN-220	Top-mount cooling fan panel - 3 fans x 110CFM, 220VAC w/ C13 plug
VP-T3	Brush guard, large - for large centre top panel cable openings
VP-BRUSH	Brush guard, small - for small perimeter top panel cable openings
VP-BAY2	VersaPOD baying kit - secures (2) VersaPOD cabinets together
VA-VPA-BAY-1	VersaPOD-to-V600/V800 baying kit - secures (1) VersaPOD cabinet to (1) V600 or V800 cabinet
VP-GRD	Grounding kit - includes ground bar, ground wire, mounting hardware and accessories (capacity to support all required grounding connections for a single cabinet)
RS-VCM	¼-Turn hook and loop cable managers (box of 10) Can be installed in vertical cable management tray, vertical patching channel and end of row vertical wire manager
VP-SPL	¼-Turn fibre management spool (bag of 5) Can be installed in vertical patching channel and end of row vertical wire manager
VP-143	¼-Turn D-ring cable manager 88.9 x 44.5mm (3.5 x 1.75 in.) Can be installed in vertical cable management trays only
VP-145	¼-Turn D-ring cable manager 27.0 x 88.9mm (1.1 x 3.5 in.) Can be installed in vertical management trays only
PNL-BRSH-1	19 Inch brush guard panel, 1U, black
V-SHV1-01-1U	4-Post, adjustable shelf, vented, 559-787mm (22 - 31 in.), 1U, black
V-SHV2-01-1U	4-Post, adjustable shelf, vented, 787-1016mm (31- 40 in.), 1U, black
VPA-LD-1	VersaPOD lid divider panel, set of 2, 107mm (4.2 in.) high, used to create cable pathways on top of bayed cabinets (compatible with VersaPOD version B only)



## VersaPOD® (VP2A) SidePOD™ and Baffle

Siemon's SidePOD and Baffle solution is designed to support side-to-side ventilated active equipment such as the Cisco Nexus® 7018 Series Switches. The SidePOD is an optional add on to Siemon's 1200mm (48 in.) deep VersaPOD (VP2A) cabinets and creates the necessary clearance for proper airflow to the switch. Optional baffles may be mounted within the SidePOD to properly route cold air from the front of the cabinet to the input side of the switch as well as route exhaust from the output side of the switch to be vented in the hot aisle. The baffles can also be mounted in the Zero-U space between adjacent, bayed VP2A cabinets.

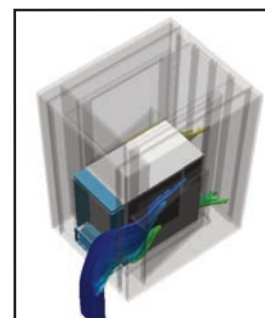
In addition to providing a cooling platform, the SidePOD also allows full size Zero-U panels to be used in End of Row applications. For 45U cabinets, this includes up to 12U of vertical patching and high capacity vertical cable management with hinged covers.



**Split Baffle Design** — Allows the baffles to be nested in the Zero-U space enabling placement of side venting equipment in adjacent cabinets



**Zero-U Modularity** — Ensures that with even a baffle installed, the balance of Zero-U space can be fully utilised for patching or cable management



**Operational Compliance** — Has been validated via Computational Fluid Dynamics (CFD) modelling under maximum operating conditions

## Ordering Information:

### SidePOD™

Part #	Description
VP2A-SPAA1-(XX) . . . . .	VP2A SidePOD with 2 vented doors, black Includes 2 levelling feet, 2 sets of baying brackets, 1 bonding conductor and assembly hardware (ships unassembled)
VP2A-SPAC1-(XX) . . . . .	VP2A SidePOD with 1 vented door and 1 solid door, black Includes 2 levelling feet, 2 sets of baying brackets, 1 bonding conductor and assembly hardware (ships unassembled)

Use (XX) to specify height. 42 = 42U, 45 = 45U

### Zero-U Baffle

Part #	Description
VP2A-BFL-S . . . . .	Zero-U baffle, black Includes mounting hardware
VP2A-BFP-1-42 . . . . .	Zero-U baffle filler panel, black Blank panel used to fill gap between baffle and adjacent triplex Zero-U space on 42U cabinets

VP2A-SPAA1-(XX)



VP2A-BFL-S-1

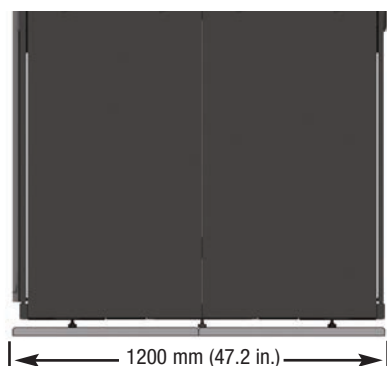
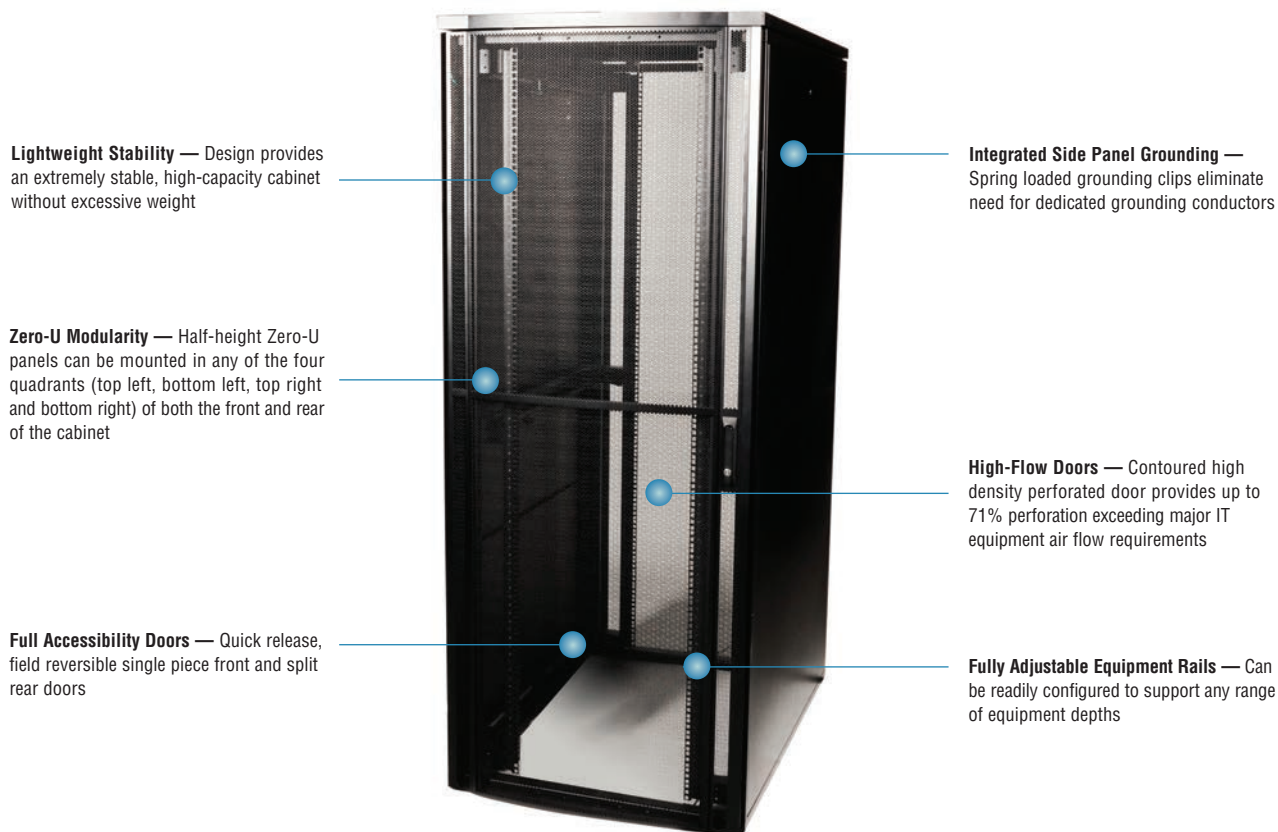


## SidePOD Product Specifications

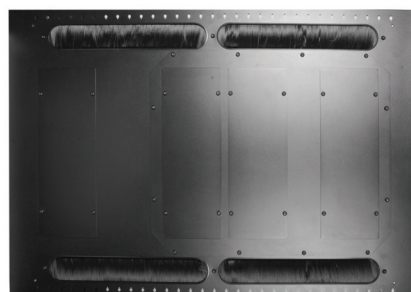
Height	42U: 2016mm (79.4 in.) 45U: 2150mm (84.6 in.)
Width	140mm (5.5 in.)
Depth	1200mm (48 in.)
Weight	26.2 kg (57.8 lbs.)
Base Type	Open
Colour	Black (RAL 9005)
Front Doors	Perforated, keyed lock
Rear Doors	Perforated, keyed lock
% Door Perforation	71%
Material	CRS of varying thickness
Finish	Textured powder coat
Standard Compliance	UL 60950-1 Ed2.0, CSA C22.2 NO. 60950-1-07
Small Cable Access Openings	3 openings, 280 x 45mm (11.4 x 1.8 in.)

## V800™ Cabinet

Siemon's V800 cabinets provide a robust, cost-effective enclosure solution that offers valuable Zero-U space on each side of the equipment rails for cable management, PDU mounting or connectivity on both the front and rear of the cabinet. The V800 cabinet is ideal for high-density data centre environments, enabling increased cabling and equipment density while providing excellent accessibility and thermal efficiency. All of these features are integrated into a full-featured modular enclosure that is equally effective as a standalone network and server cabinet or in a multi-unit bayed configuration, offering a simple, scalable expansion path in any data centre.



The V82A cabinet is exactly 1200mm (47.2 in.) deep, allowing for full access to adjacent tiles immediately in front or in back of placed cabinets and provides full 1.2m (3.9 ft.) aisle spacing as specified within ISO/IEC 14763-2 and EN 50600-2-4



The cabinet lid includes four integrated brush guards for cables to enter the cabinet without compromising thermal integrity

## Ordering Information:

V8(X)A-(X)(X)(X)(X)(X)(X)-(XX).....V800™ Cabinet

<b>Cabinet Depth*</b>		<b>Cabinet Height</b>
1 = 1000 mm (39.4 in.)		42 = 42U
2 = 1200 mm (47.2 in.)		45 = 45U
		48 = 48U
<b>Side Panels</b>		<b>Colour*</b>
0 = No Side Panels		1 = Black
1 = 1 Side Panel		2 = White
2 = Side Panels		4 = Grey
<b>Front Door</b>		<b>Castor Option</b>
A = Full Vented		1 = None
B = Split Vented		2 = Castors
C = Split Solid		
<b>Rear Door</b>	<b>Lock Type</b>	
A = Full Vented	1 = Key Lock	
B = Split Vented	2 = Tumbler Lock	
C = Split Solid		



Includes: 4 levelling feet, 50 M6 cage nuts, 50 combo M6 screws with cup washers, 1 cage nut removal tool, 1 combo torx/ philips head screwdriver, 13/14mm wrench, door/side panel keys and 2 stabilising brackets

\*Note: White and grey cabinets and accessories available in July 2017.

## V800 Cabinet Product Specifications

<b>Height*</b>	42U: 2013mm (79.3 in.) 45U: 2146mm (84.5 in.) 48U: 2280mm (89.8 in.)
<b>Width</b>	800mm 31.5 in.)
<b>Depth - External (Door-to-Door)</b>	V81A: 1000mm (39.4 in.) V82A: 1200mm (47.2 in.)
<b>Depth - Usable (Rail to Rail Max.)</b>	V81A: 806mm (31.7 in.) V82A: 1006mm (39.6 in.)
<b>Weight**</b>	42U V81A: 111kg/ V82A: 126kg (277.8 lbs.) 45U V81A: 116kg/ V82A: 131kg (288.8 lbs.) 48U V81A: 121kg/ V82A: 136kg (299.8 lbs.)
<b>Load Rating</b>	Static: 1000kg (2204.6 lbs.) Dynamic: 714kg (1574.1 lbs.)
<b>Base Type</b>	Open
<b>Colour</b>	Black (RAL 9011)
<b>% Door Perforation</b>	71%
<b>U Space Identification</b>	Yes (bottom-to-top)
<b>Lid Cable Access Openings</b>	V81A: 3 large; (4) 63 x 406mm (2.5 x 16.0 in.) integrated brush guards V82A: 4 large; (4) 63 x 406mm (2.5 x 16.0 in.) integrated brush guards
<b>Material</b>	CRS of varying thickness
<b>Finish</b>	Textured Powder Coat
<b>Standards Compliance</b>	UL 60950-1 Ed2.0, EIA/ECA-310-E, IP20

\* Nominal height with stabilising brackets

\*\* Does not include packaging

## V800™ Cabinet Zero-U Accessory Ordering Information



V8A-VPC4-1-(XX).....  
Half-height Zero-U vertical  
patching channel with 4 in.  
(102mm) fingers and cover



V8A-VPC6-1-(XX).....  
Half-height Zero-U vertical  
patching channel with 6 in.  
(152mm) fingers and cover



V8A-VPC145-1-(XX).....  
Half-height Zero-U vertical  
patching channel with D-ring  
managers



V8A-BRSH-1-(XX).....  
Half-height Zero-U vertical  
brush guard panel



V8A-VPP2U-1-(XX).....  
Half-height Zero-U vertical  
patch panel, 2U

Mounts 2U of standard 19 in.  
panels in vertical orientation

Includes (8) M6 cage nuts



V8A-PDU-F1-1-(XX).....  
Full-height Zero-U vertical PDU  
panel

Full length brackets support  
tool-less mounting of one (1)  
vertical rack mount PDU with a  
maximum width of 86.4mm  
(3.4 in.) and 1.24m (4.1 ft.),  
1.56m (5.1 ft.) or 1.65m (5.4 ft.)  
O.C. mounting buttons



V8A-BLNK-1-(XX).....  
Half-height Zero-U Vertical  
Blanking Panel

Used to block unused Zero-U  
spaces to prevent re-circulation  
of air

Use (XX) to specify cabinet height: 42 = 42U, 45 = 45U, 48 = 48U

## Cabinet Accessory Ordering Information

Part #	Description
VPA-SPAN-1 . . . . .	Adjustable depth cable trough, extends from 555mm (21.9 in.) to 911mm (35.9 in.), 81mm (3.2 in.) wide; 65mm (2.6 in.) high Used to route cables between the front and rear of cabinets. Mounts between vertical patching channels mounted to front and rear of cabinets
V8A-LD-1 . . . . .	V800 lid divider panel, set of 2, 107mm (4.2 in.) high Used to create cable pathways on top of bayed cabinets
V-TRAY-100-1-(XX) . . . . .	100mm (3.9 in.) V600/V800 vertical cable tray, set of 2, black
V-TRAY-150-1-(XX) . . . . .	150mm (5.9 in.) V600/V800 vertical cable tray, set of 2, black
V-TRAY-300-1-(XX) . . . . .	300mm (11.8 in.) V600/V800 vertical cable tray, set of 2, black

These trays can be easily mounted at any location along the front-to-rear cabinet rails of V600 and V800 cabinets and feature keyholes for PDU mounting, t-shaped cutouts for cable tie attachment cable management and 9.5mm (0.375 in.) cage nut openings for cable management accessory mounting such as Siemon's VP-143 ¼-turn cable managers.

Use (XX) to specify cabinet height: 42 = 42U, 45 = 45U, 48 = 48U



VPA-SPAN-1

V8A-LD-1

V8A-DRA-1-(XX) . . . . . V800 full vented door, black

V8A-DRB-1-(XX) . . . . . V800 split vented doors, black, set of 2

V8A-DRC-1-(XX) . . . . . V800 split solid doors, black, set of 2

V1A-S-1(XX) . . . . . V600/V800 1000mm (39.4 in.) split side panels, black, set of 2

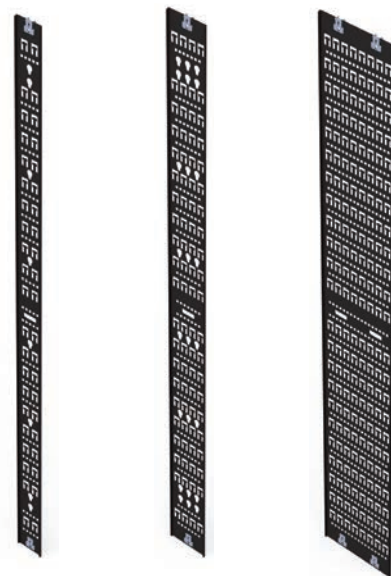
V2A-S-1(XX) . . . . . V600/V800 1200mm (47.2 in.) split side panels, black, set of 2

V8A-R-1-(XX) . . . . . V800 equipment mounting rail, black, set of 2

V-SHV1-01-1U . . . . . 4-Post, adjustable shelf, vented, 559-787mm (22- 31 in.), 1U, black

V-SHV2-01-1U . . . . . 4-Post, adjustable shelf, vented, 787-1016mm (31- 40 in.), 1U, black

Use (X) to specify cabinet height: 42 = 42U, 45 = 45U, 48 = 48U



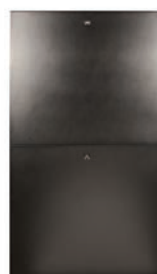
V-TRAY-100-1-(XX) V-TRAY-150-1-(XX) V-TRAY-300-1-(XX)



V8A-DRA-1-(XX)



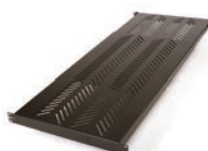
V8A-DRB-1-(XX)



V1A-S-1(XX)



V8A-R-1-(XX)



V-SHV1-01-1U



## V600 Cabinet

The V600 cabinet provides a robust, cost-effective enclosure solution that is ideal for use in conjunction with VersaPOD® or V800 data centre cabinets. While not compatible with VersaPOD or V800 Zero-U vertical patching and cable management accessories, it shares a common appearance for standard cabinet applications and is ideal for use as a server cabinet.

**Lightweight Stability** — Design provides an extremely stable, high-capacity cabinet without excessive weight

**Enhanced Side Access** — Split level side panels provide convenient access to installed equipment

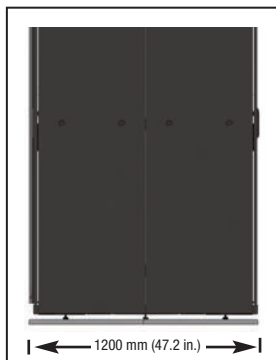


**High-Flow Doors** — Contoured high density perforated door provides up to 71% perforation exceeding major IT equipment air flow requirements

**Full Accessibility Doors** — Quick release, field reversible single piece front and split rear doors



**Flexible Mounting Options** — Fully adjustable mounting rails can be readily configured to support any range of equipment depths



**Consistent Aesthetics** — The V62A cabinet is exactly 1200mm (47.2 in.) deep, allowing for full access to adjacent tiles immediately in front or in back of placed cabinets



**Thermally Efficient** — Compatible with VersaPOD thermal management options including exhaust fans and brush guards. V62A cabinet is compatible with VersaPOD Vertical Exhaust Ducts

# V600 Cabinet Accessories

## Ordering Information:

V6(X)(X)-(X)(X)(X)(X)(X)(X)-(XX) . . . V600 Cabinet

<b>Depth</b>	<b>Height</b>
1 = 1000mm (39.4 in.)	42 = 42U
2 = 1200mm (47.2 in.)	45 = 45U
	48 = 48U
<b>Version</b>	<b>Colour*</b>
A = Version A	1 = Black
B = Version B	2 = White
	4 = Grey
<b>Side Panels</b>	<b>Castors</b>
0 = No Panels	1 = None
1 = 1 Panels	2 = Castors
2 = 2 Panels	<b>Lock Type</b>
<b>Front Door</b>	1 = Key Lock
A = Full Vented	2 = Tumbler Combination Lock
B = Split Vented	
C = Split Solid	
<b>Rear Door</b>	
A = Full Vented	
B = Split Vented	
C = Split Solid	



Includes: 4 levelling feet, 50 M6 cage nuts, 50 combo M6 screws with cup washers, 1 cage nut removal tool, 1 combo torx/ philips head screwdriver, 13/14mm wrench, door/side panel keys and 2 stabilising brackets

\*Note: White and grey cabinets and accessories available in July 2017.

## V600 Cabinet Specifications

<b>Height*</b>	42U: 2016mm (79.4 in.) 45U: 2150mm (84.6 in.) 48U: 2280mm (89.7 in.)
<b>Width</b>	600mm (23.6 in.)
<b>Depth - External (Door to Door)</b>	V61: 1000mm (39.4 in.) V62: 1200mm (47.2 in.)
<b>Depth - Usable (Rail-to-Rail Max.)</b>	V61: 806mm (31.8 in.) V62: 1006mm (39.6 in.)
<b>Weight **</b>	42U V61: 97kg (214 lbs.) V62: 112kg (247 lbs.) 45U V61: 102kg (224 lbs.) V62: 117kg (258 lbs.) 48U V61: 107kg (236 lbs.) V62: 122kg (269 lbs.)
<b>Load Rating</b>	Static: 1361kg (3000 lbs.) Dynamic: 1021kg (2250 lbs.)
<b>Base Type</b>	Open
<b>Colour</b>	Black (RAL 9011)
<b>% Door Perforation</b>	71%
<b>U Space Identification</b>	Yes
<b>Lid Cable Access Openings</b>	V61A: 1 (large), 4 (small) V61B: 3 (large), 0 (small) V62A: 4 (large), 3 (small) V62B: 4 (large), 0 (small)
<b>Material</b>	CRS of varying thicknesses
<b>Finish</b>	Textured powder coat
<b>Standards Compliance</b>	UL 60950-1 Ed2.0, EIA/ECA-310-E, IP20

## V600 Cabinet Accessories

VP-DUCT1*	VersaPOD vertical exhaust duct, 523mm x 653mm x 516-923mm (20.6 x 25.7 x 20 - 36 in.), black
VP-DUCT2*	VersaPOD vertical exhaust duct, 523mm x 653mm x 912-1320mm (20.6 x 25.7 x 36-52 in.), black
V-TRAY-100-1-(XX)*	100mm (3.9 in.) V600/V800 vertical cable tray, set of 2, black
V-TRAY-150-1-(XX)*	150mm (5.9 in.) V600/V800 vertical cable tray, set of 2, black
V-TRAY-300-1-(XX)*	300mm (11.8 in.) V600/V800 vertical cable tray, set of 2, black
V6A-R-1-42.	V600 mounting rails (set of 2), 42U, black
V6A-R-1-45.	V600 mounting rails (set of 2), 45U, black
V6A-R-1-48.	V600 mounting rails (set of 2), 48U, black
VP-FAN	Top-mount cooling fan panel, 3 fans x 110CFM, 120VAC w/NEMA 5-15P plug
VP-FAN-220.	Top-mount cooling fan panel, 3 fans x 110CFM, 220VAC w/C13 plug
VP-T3	Brush guard, large For large centre top panel cable openings
VP-BRUSH	Brush guard, small (compatible with version A only) For small perimeter top panel cable openings
V-W.	V600 castors V600/V800 castors (set of four)
VA-VPA-BAY-1.	VersaPOD baying kit Secures (1) VersaPOD cabinet to (1) V600 cabinet
VP-GRD	Grounding kit – includes ground bar, ground wire, mounting hardware, and accessories (capacity to support all required grounding connections for a single cabinet)
V6A-LD-1.	V600 lid divider panel, set of 2, 107mm (4.2 in.) high, used to create cable pathways on top of bayed cabinets (compatible with V600 version B only)

\* Nominal height with adjustable levelling feet or castors

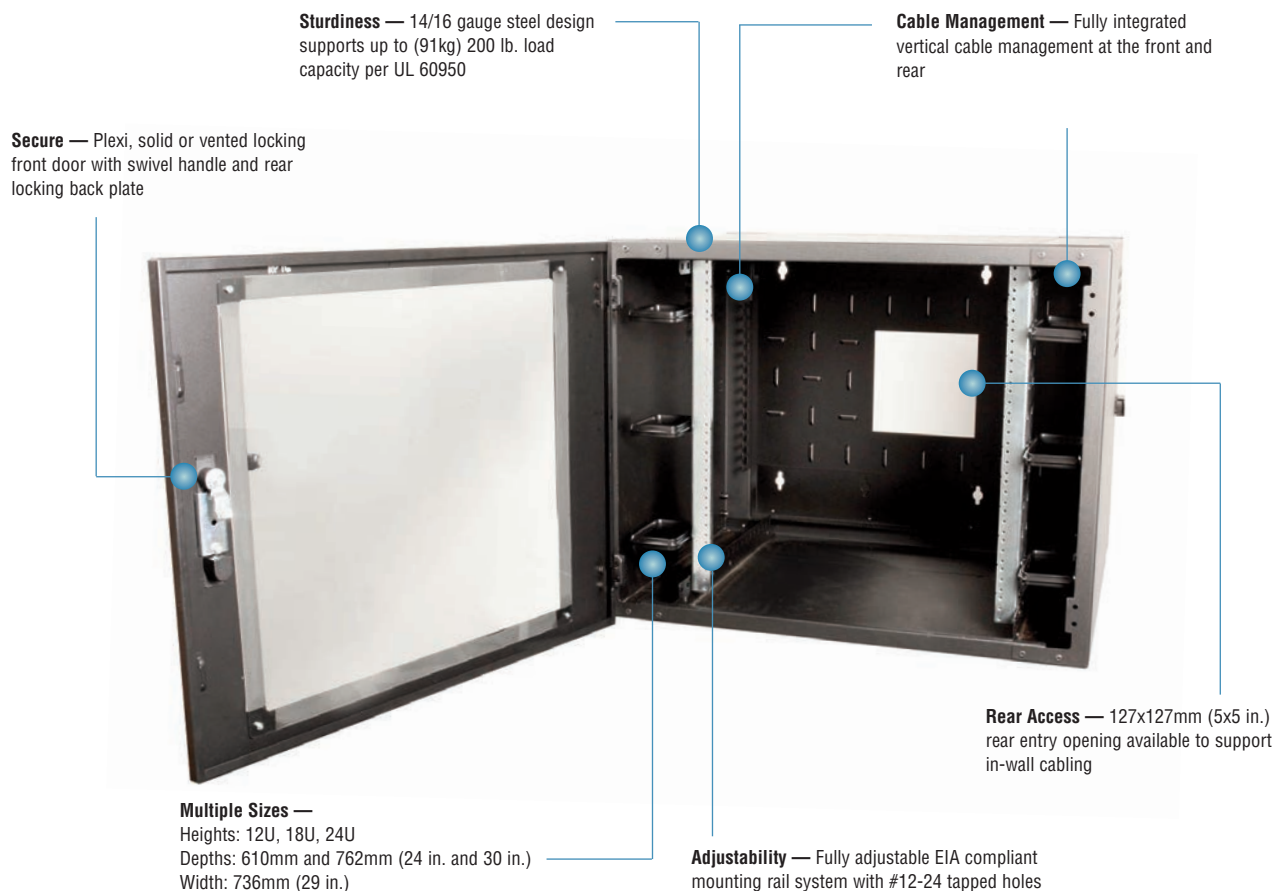
\*\* Does not include packaging

Use (XX) to specify cabinet height: 42 = 42U, 45 = 45U, 48 = 48U

\*Vertical exhaust ducts are compatible with V62A cabinets only. Solid doors should be specified for cabinets using exhaust ducts.

## Wall Mount Cabinet

Siemon's feature-rich Wall Mount Cabinet saves valuable floor space while providing a cost-effective means to secure and protect network equipment from dust, tampering, and other hazards. Designed with excellent cable management, easy rear access and a fully adjustable mounting rail system, the Wall Mount Cabinet is extremely versatile for a wide range of applications. It is ideal as a mini telecommunications room or for remote network distribution and consolidation points in open, unprotected spaces such as warehouses, retail facilities and schools. This EIA/ECA and UL 60950-compliant Wall Mount Cabinet is also ideal for zone cabling in intelligent building applications, passive optical networks, or wherever more expensive full-size cabinets are not required. It is compatible with Siemon VersaPOD® fan kits, rack-mount PDUs, shelves and other accessories.



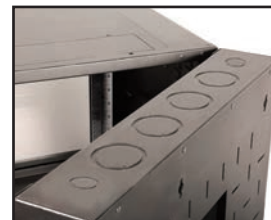
**Accessibility** — Easy rear access to equipment and wiring with right- or left-hinged back plate design



**Front Cable Management** — Integrated vertical cable management at front of cabinet provides means to route patch cords vertically within cabinet



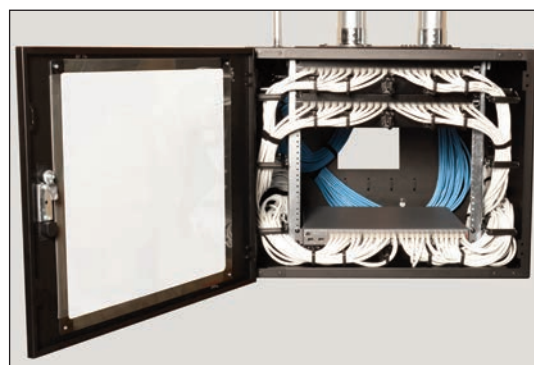
**Intelligent Ready** — Standard swing handle can be easily retrofitted with 3rd party card or biometric handles for high security applications



**Cable Entry** — (4) concentric 63.5 / 76.2mm (2.5 / 3 in.) and (2) 19mm (0.75 in.) cable entry knockouts at the top and bottom of the back plate

## Ordering Information:

WC(X)-(X)1(XX)-(XX) . . . . . Wall mount cabinet	
<b>Depth</b>	<b>Height</b>
2 = 610mm (24 in.)	12 = 12U
3 = 762mm (30 in.)	18 = 18U
	24 = 24U
<b>Front Door</b>	<b>Colour</b>
S = Solid	01 = Black
P = Plexiglass	02 = White
V = Vented	04 = Grey



## Wall Mount Specifications

<b>Height</b>	12U: 584mm (23 in.) 18U: 864mm (34 in.) 24U: 1118mm (44 in.)
<b>Width</b>	737mm (29 in.)
<b>Depth - External (Door to Door)</b>	WC2: 610mm (24 in.) WC3: 762mm (30 in.)
<b>Depth - Usable (Rail-to-Rail Max.)</b>	WC2: 394mm (15.5 in.) WC3: 546mm (21.5 in.)
<b>Weight *</b>	WC2 12U: 36kg (80 lbs.) WC2 18U: 48kg (105 lbs.) WC2 24U: 59kg (130 lbs.) WC3 12U: 45kg (100 lbs.) WC3 18U: 57kg (125 lbs.) WC3 24U: 68kg (150 lbs.)
<b>Load Rating</b>	Static: 91kg (200 lbs.)
<b>Colour</b>	Black, White or Grey
<b>% Door Perforation</b>	41%
<b>U Space Identification</b>	Equipment Rail Notches
<b>Lid Cable Access Openings</b>	6 small
<b>Material</b>	14/16 gauge steel
<b>Finish</b>	Textured powder coat
<b>Standards Compliance</b>	EIA/ECA-310-E UL 60950 NEMA Type 1 Enclosure IP20 Rated

\* Does not include packaging

Wall Mount Cabinets are also available as Siemon's V-Built® Customised Preconfigured Cabinet Solutions, where each cabinet is identified by one unique customer-specific part number, preloaded with Siemon components and packaged at one of our regional Siemon manufacturing facilities. This speeds deployment time and reduces on site packaging waste. Contact Siemon for more information.



## Wall Mount Cabinet Accessories

- VP-FAN. . . . . Top-mount cooling fan panel, 2 fans x 110CFM, 120VAC w/NEMA 5-15P plug
- VP-FAN-220. . . . . Top-mount cooling fan panel, 3 fans x 110CFM, 220VAC w/C13 plug
- VP-GRD. . . . . Grounding kit - Includes ground bar, ground wire, mounting hardware, and accessories (capacity to support all required grounding connections for a single cabinet)