

Work Area, Zone Cabling and Accessories

Siemon’s line of faceplates and mounting accessories provide cabling professionals with an extensive list of unique, problem solving options for deploying network connectivity exactly where it is needed.

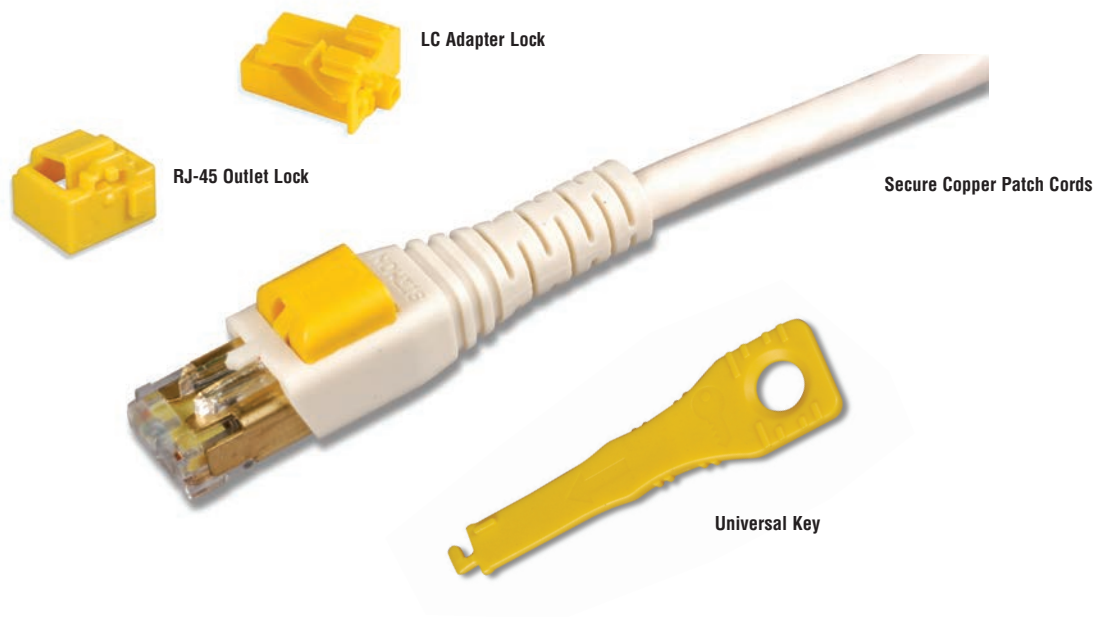
Section Contents

- LockIT™ Secure Connectivity System and Accessories 8.1 – 8.2
- MAX® Faceplates 8.3 – 8.4
- MAX Faceplates and Accessories 8.4 – 8.6
- Surface Mount Boxes 8.7 - 8.8
- Surface Pack™ Box 8.9 – 8.10
- Multi-User Telecommunications Outlet Assembly (MUTOA) 8.11
- MAX Fibre Adapter Outlets 8.12
- Coax MAX Outlets 8.13
- MAX Audio/Video Outlets 8.13
- Fibre Outlet Box (FOB2) 8.14
- Fibre Bezels 8.14
- CT® Faceplates and Accessories 8.15
- Modular Adapters and Splitters 8.16
- 24 Port MAX Zone Unit Enclosure 8.17 - 8.18
- Passive Ceiling Zone Enclosure 8.19 – 8.20
- MAX Low-Profile Zone Unit Enclosure 8.20

LockIT™ Secure Connectivity System

The LockIT solution is comprised of two primary elements: the RJ-45 outlet/LC adapter lock and the secure patch cord. The lock protects a RJ-45 copper outlet or LC fibre adapter from the insertion of cords or foreign objects. The Secure RJ-45 patch cord deters unintended or unauthorised disconnection of the cord. Each of these components requires the LockIT universal key for removal, but may be freely inserted into an outlet to secure the connection. All LockIT components are brightly coloured in yellow to easily identify secured connectivity.

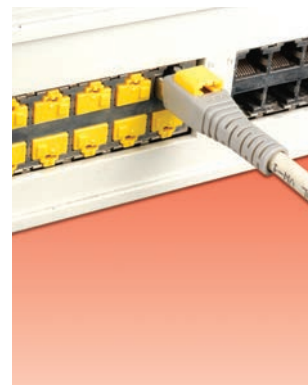
The LockIT products are compatible with any standards compliant RJ-45 outlet, or LC fibre port. This versatile system can be used in a variety of applications. This flexibility makes LockIT a perfect choice for use in public areas such as schools, retail stores, banks, airports and waiting areas. LockIT is also an ideal solution to protect mission-critical networks such as data centres, health care environments and government systems.



LockIT can protect copper and fibre work area outlets in public areas from tampering or unwanted access



Patch panel and fibre ports may be protected in the work area, wiring closets and data centres



LockIT is ideal to secure active equipment ports against unintended or unauthorised connections or disconnections

Outlet Locks

- LockIT RJ-45 Outlet Lock:
LL-05.....LockIT RJ-45 outlet lock, bag of 10, includes 1 LockIT universal key
- LockIT LC Module Lock:
LL-LC-05.....LockIT LC adapter lock, bag of 10, includes 1 LockIT universal key
- LockIT Universal Key:
LKEY-05.....LockIT universal key, bag of 10



Secure Category 6A Shielded Patchcords

Shielded Category 6A, double ended, 4-pair, stranded LockIT secure patch cord, T568A/B, colour matching jacket/boot, LSOH/CM

| LP6A-S(XX)M-(XX)L | |
|--------------------|-------------|
| Cord Length | Cord Colour |
| 01 = 1m (3.3 ft.) | 01 = Black |
| 1.5 = 1.5m (5 ft.) | 02 = White |
| 02 = 2m (6.6 ft.) | 03 = Red |
| 03 = 3m (9.8 ft.) | 04 = Grey |
| 04 = 4m (13.1 ft.) | 05 = Yellow |
| 05 = 5m (16.4 ft.) | 06 = Blue |
| | 07 = Green |

Secure Category 6A UTP Patchcords

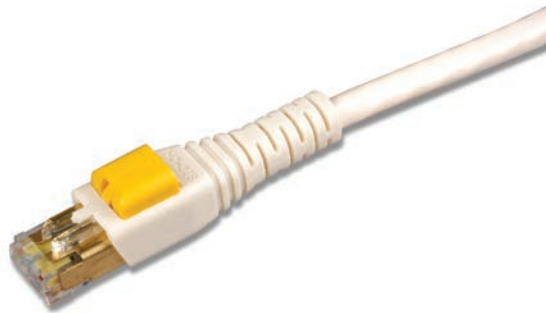
UTP Category 6A, double ended, 4-pair, stranded LockIT secure patch cord, T568A/B, colour matching jacket/boot, CMG

| LP6A-(XX)M-(XX) | |
|--------------------|-------------|
| Cord Length | Cord Colour |
| 01 = 1m (3.3 ft.) | 01 = Black |
| 1.5 = 1.5m (5 ft.) | 02 = White |
| 02 = 2m (6.6 ft.) | 03 = Red |
| 03 = 3m (9.8 ft.) | 04 = Grey |
| 04 = 4m (13.1 ft.) | 05 = Yellow |
| 05 = 5m (16.4 ft.) | 06 = Blue |
| | 07 = Green |

Secure Category 6 Patchcords

UTP Category 6, double ended, 4-pair, stranded LockIT secure patch cord, T568A/B, colour matching jacket/boot, CMG

| L(X)6-(XX)M-(XX) | |
|----------------------------|-------------|
| Plug Configuration | Cord Colour |
| P = LockIT to LockIT | 01 = Black |
| M = LockIT to MC6 | 02 = White |
| B = LockIT to BladePatch 6 | 03 = Red |
| | 04 = Grey |
| | 05 = Yellow |
| | 06 = Blue |
| | 07 = Green |
| Cord Length | |
| 01 = 1m (3.3 ft.) | |
| 1.5 = 1.5m (5 ft.) | |
| 02 = 2m (6.6 ft.) | |
| 03 = 3m (9.8 ft.) | |
| 04 = 4m (13.1 ft.) | |
| 05 = 5m (16.4 ft.) | |



MAX® International Faceplates

The MAX series modular faceplates combine high capacity with aesthetic enhancements that provide a fresh new look to match today's technologies. The faceplate offers pressure-release designation label covers which eliminate the need for a probe-pic or screwdriver when installing faceplate labels. The faceplates are designed to be used with Z-MAX®, TERA®, and both angled and flat MAX outlets. Its durable finish masks minor scuffs that may occur during daily usage.

Labels — Sheets of designation labels can be ordered for use with printers

Variety — A variety of faceplates and adapters are available



Application Flexibility — Complete multimedia support

Multiple Colour Options — Faceplates available in black, white, bright white, alpine white, ivory, light ivory



Installation Flexibility

Flexible mounting tab on MAX outlets allows installation from front or rear of faceplate.



Reduced Mounting Depth

Siemon's angled faceplate adapters provides a secure mounting solution for use in trunking systems, faceplates and floor boxes while reducing depth needs.



Labelling

Most faceplates include pressure-release designation label covers for quick, tool-less removal.

10G MAX British Faceplates

Siemon's 10G MAX British faceplates are designed to provide the optimal outlet separation necessary to reduce alien crosstalk (ANEXT) between Z-MAX 6A UTP modules. They are also ideal for use with Siemon's shielded Z-MAX 6A modules. MAX British faceplates are compatible with British standards (85mm x 85mm).

10GMX-BFP-02-02.
2-Port single gang 10G faceplate
for Z-MAX, MAX or TERA outlets,
white



10GMX-BFP-04-02.
4-Port single gang 10G faceplate
for Z-MAX, MAX or TERA
outlets, white



Faceplates include designation labels, clear label covers, and M3.5x0.6x25 mounting screws.

Ⓢ Add "B" to end of part number for bulk project pack of 100 faceplates.

10G MAX® Horizontal Faceplates (International)

Siemon's 10G single gang horizontal faceplate for Z-MAX®, TERA® or MAX outlets, (Australian/ Italian)

10GMX-HFPZ-(XX)-(XX)

Ports

02 = 2 Port

03 = 3 Port

04 = 4 Port

Colour

02 = White

20 = Ivory

80 = Light Ivory



Ⓢ Add "B" to end of part number for bulk project pack of 100 faceplates.

MAX British Faceplates

MAX British faceplates are compatible with British standards (85mm x 85mm). The faceplate is designed to accept up to six Z-MAX, MAX or TERA outlets.



MX-BFP-S-01-02.
1-Port single gang faceplate
for a Z-MAX, MAX or TERA
outlet, white



MX-BFP-S-02-02*.
2-Port single gang faceplate
for Z-MAX, MAX or TERA
outlets, white



MX-BFP-S-03-02*.
3-Port single gang faceplate
for Z-MAX, MAX or TERA
outlets, white



MX-BFP-S-04-02*.
4-Port single gang faceplate
for Z-MAX, MAX or TERA
outlets, white



MX-BFP-S-06-02*.
6-Port single gang faceplate
for Z-MAX, MAX or TERA
outlets, white

Faceplates include designation labels, clear label cover(s), and M3.5 x 0.6x25 mounting screws

*Not compatible with shielded MAX outlets

MAX British Double Layer Faceplates

Designed for markets that use British mounting standards (85mm x 85mm), these faceplates offer improved aesthetics via snap-on mounting screw covers. Faceplates include designation labels, clear label covers, and M3.5 x 0.6x25 mounting screws.



MX-BFPL-01-02.
1-Port single gang faceplate
for a Z-MAX, MAX or TERA
outlet, white



10GMX-BFPL-02-02.
2-Port single gang 10G
faceplate for Z-MAX, MAX or
TERA outlets, white



MX-BFPL-02-02*.
2-Port single gang faceplate
for Z-MAX, MAX or TERA
outlets, white



MX-BFPL-03-02*.
3-Port single gang faceplate
for Z-MAX, MAX or TERA
outlets, white



MX-BFPL-04-02*.
4-Port single gang faceplate
for Z-MAX, MAX or TERA
outlets, white

Add "M" to end of part number for M4 x 0.7x25 mounting screws. Faceplates include designation label, clear label covers, and M3.5 x 0.6x25 mounting screws.

*Not compatible with shielded MAX outlets

Note: Alpine white colour option available (replace -02 with -82)

MAX® Horizontal Faceplates (International)

Siemon's single gang horizontal faceplate for Z-MAX®, TERA® or MAX outlets (Australian/ Italian)

MX-HFPZ-(XX)-(XX)

| Ports | Colour |
|-------------|------------------|
| 01 = 1 Port | 02 = White |
| 02 = 2 Port | 20 = Ivory |
| 03 = 3 Port | 80 = Light Ivory |
| 04 = 4 Port | |

Note: Screws, designation label and clear label cover included.



British 6C Flexyoke and Danish Faceplate



FY-MXZ-(XX).....
1-Port 37mm x 22mm (1.5 x 0.87 in.)
MAX British Flexyoke housing for a
MAX, Z-MAX or TERA outlet



MX-DFP-02-02*.....
2-Port 71mm x 47mm (2.8 x 1.85 in.)
Danish faceplate for MAX outlets or
TERA outlets, white

Use (XX) to specify colour: 02 = White, 25 = Bright White

*Not compatible with shielded MAX outlets

TERA-MAX Faceplate



T50-(XX).....
2-Port 50mm x 50mm (2.3 x 2.3 in.)
faceplate for MAX, Z-MAX or TERA
outlets

Use (XX) to specify colour: 02 = White, 80 = Light Ivory, 82 = Alpine White

Z-MAX® Icon Cards

All Cards include:

- Red and blue icons with voice and data symbols
- Supplemental/colour-matched icon with voice, data, and blank designation
- 1 white blank icon for field designation
- Fully recyclable material

Z-ICON-(XX)B..... Z-MAX Icon Card, bag of 100

Primary Colour

| | | | | |
|------------|-----------|-------------|-------------|------------------|
| 01 = Black | 03 = Red | 05 = Yellow | 07 = Green | 20 = Ivory |
| 02 = White | 04 = Grey | 06 = Blue | 09 = Orange | 80 = Light Ivory |



MAX® and CT® Icons

| Part # | Description |
|--------------|--|
| CT-ICON-(XX) | 25 Coloured icon tabs (phone on one side, computer on reverse) |



Use (XX) to specify colour: 01 = Black, 02 = White, 03 = Red, 04 = Grey, 05 = Yellow, 06 = Blue, 07 = Green, 08 = Violet, 09 = Orange, 20 = Ivory, 25 = Bright White, 60 = Brown, 80 = Light Ivory

ⓑ Add "B" for bulk pack of 100 icons or tabs.

MAX Labelling and Accessories

| Part # | Description |
|----------------|--|
| CT-FP-LBL-104* | 10 Sheets of labels for faceplates that will fit any standard 8.5 x 11 printer, 104 labels/sheet |
| MX-FP-CVR-00 | Bag of 100 clear label covers for MAX faceplates |

*Visit our web site or contact our Technical Support Department for labelling software.

ⓑ Add "B" for bulk pack of 100 icons or tabs.

MAX Outlet Blanks

Blank inserts for unused ports and future growth.

| Part # | Description |
|------------|-------------------------|
| MX-BL-(XX) | Blank outlet, bag of 10 |



Use (XX) to specify colour: 00 = Clear (MX-AD-XX only), 01 = Black, 02 = White, 04 = Grey, 20 = Ivory, 25 = Bright White, 80 = Light Ivory

Surface Mount Boxes

Surface mount boxes feature a sleek compact, easy-to-install design. UTP, shielded, fibre, video, and coax MAX® modules, Z-MAX® or TERA® outlets can be quickly installed into the base. Multiple cable management features provide a high performance and well organised installation.

Cable/Raceway Entry — Breakouts on three sides and bottom

Label Cover — Conceals screw for added security if desired

Compliant — Is compliant with UL2043 and is appropriate for use in air handling spaces

Snap-on Cover with Designation Areas — For colour-coded icons/tabs and write-on labels



Cable Management — Built-in cable management features ensure proper bend radius for copper or fibre

MAX Bezels Included — Allows flat MAX outlets to be secured in place

Optional Spring-loaded Shutter Doors — Shutter doors offer added protection from dust and other contaminants

Cable Tie Anchor Points — Facilitates strain relief for cable

Z-MAX Surface Mount Boxes

MX-SMZ(X)-(XX)-(X). Z-MAX surface mount box with cover base, multimedia bezel, cable ties, adhesive tape and mounting screws

| Ports | Options |
|------------------|---------------|
| 1 = 1 Port | (Blank) = N/A |
| 2 = 2 Port* | M = Magnets |
| 4 = 4 Port* | |
| 6 = 6 Port* | |
| Colour | |
| 01 = Black | |
| 02 = White | |
| 20 = Ivory | |
| 80 = Light Ivory | |

* Includes designation labels and label covers

Also for use with single-port flat and duplex LC adapter modules and TERA outlets.



MX-SM Surface Mount Boxes

Field-assembled surface mount boxes with MAX® bezels. Accepts flat single port MAX modules ordered separately.



MX-SM1-(XX).

1-Port box with cover, base, one single port MAX bezel, cable ties, adhesive tape and mounting screws



MX-SM2-(XX).

2-Port box with cover, base, one (2-port) MAX bezel, cable ties, adhesive tape, mounting screws, and designation labels



MX-SM4-(XX).

4-Port box with cover, base, two (2-port) MAX bezels, cable ties, adhesive tape, mounting screws, designation labels and label covers



MX-SM6-(XX).

6-Port box with cover, base, three (2-port) MAX bezels, cable ties, adhesive tape, mounting screws, designation labels and label covers

Use (XX) to specify colour: 01 = Black, 02 = White, 20 = Ivory, 80 = Light Ivory

Add "-D" for optional spring shutter doors.

Add "-M" for optional magnets.

Add "-MD" for optional doors and magnets.

MAX bezels are compatible with all single port, flat MAX outlets. For LC, SC duplex fibre adapters, Z-MAX® and TERA® options, see MX-SM multimedia bezels below.

MX-SM Multimedia, SC Bezels and Blanks



MX-SMB1-MM-(XX). . . .
1-Port multimedia bezel



MX-SMB-MM-(XX).
2-Port multimedia bezel



MX-SMB-SC-(XX).
2-Port bezel with one duplex SC adapter*



MX-SM-BLNK-(XX).
1-Port blank insert for MAX bezels

Use (XX) to specify colour: 01 = Black, 02 = White, 20 = Ivory, 80 = Light Ivory.

*SC adapters are "universal" to support both Multimode and Singlemode.

Note: Multimedia bezel accommodates Z-MAX, TERA outlets and flat MAX duplex LC adapters.

They are also compatible with all other single port flat MAX modules, but require the use of icons to secure modules into bezel.

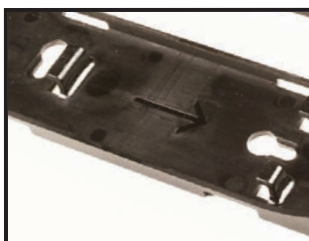
Surface Pack™ Box

Siemon's Surface Pack Box is best described as a compact, lightweight box often utilised in high density work area environments that require rapid deployment of cabling systems. Typically deployed in buildings with a raised floor system, environments range from call centers to trading floors.

The box supports rapid deployment by allowing connectivity to be pre-terminated and stored away while construction is finalised. Cables can be routed within flexible conduit (not supplied), secured to the box and terminated to outlets. The small overall footprint allows the box and connectivity to be stored under a raised floor and then passed through standard size floor grommets for efficient deployment to the work station.

Surface Pack Boxes are available in 3 port and 6 port versions. Both boxes are the same size and compatible with MAX®, Z-MAX® and TERA® outlets allowing customers to support Category 5e, 6, 6A and 7A installations. The outlets are presented at an angle to allow patch cords to dress less prominently off the face of the box. Blanks may be used to accommodate port count variants and allow for expansion in the future. Ample labelling is provided for both the box and ports.

Two mounting options are available. One method features a mounting bracket that can be secured to a fixed location and allows the box to be clipped into the bracket via a one touch latch. For additional security, the box can be mounted without the use of the bracket by securing the base directly to the work area surface.



Pre-mountable Bracket — Allows box to be quickly installed at the work area location



Cable Tie Down Point — Within box secures cables for proper strain relief



Easy Access — All terminations and cables are contained within the box cover allowing easy access to terminations

Product Information

PERFORMANCE SPECIFICATIONS

| Mechanical Properties | | |
|-----------------------|---|------------------|
| | 3-Port | 6-Port |
| Part Number | SP-3-01 | SP-6-01 |
| Conduit Opening | 26 mm (1.02 in.) | 32 mm (1.26 in.) |
| Dimensions | | |
| Length | 192 mm (7.56 in.) | |
| Width | 54 mm (2.13 in.) | |
| Height | 61 mm (2.40 in.) | |
| Weight | 181 grams (6.42 oz.) | |
| Material | Polycarb / ABS | |
| Flammability Rating | UL 94 V-0 | |
| Operating Temperature | -10°C to +60° C (14 to 156°F) | |
| Relative Humidity | Up to 95%, non-condensing | |
| Storage Temperature | -40° C to +70° C (-56 to 158°F) | |
| Outlet Compatibility | TERA®, Z-MAX® Hybrid UTP or Shielded, MAX® Flat UTP Outlets, MAX Blanks | |
| Colour | Black | |

Ordering Information

| Part # | Description |
|---------------|--|
| SP-3-01 | 3-Port Surface Pack™ box, modular, black |
| SP-6-01 | 6-Port Surface Pack box, modular, black |



SP-3-01



SP-6-01

Box Includes:

- 3 - Port identification labels and covers
- 1 - Box label and cover
- 1 - 203mm (8 in.) Tie-wrap
- 1 - Screw for securing cover to the base of the box


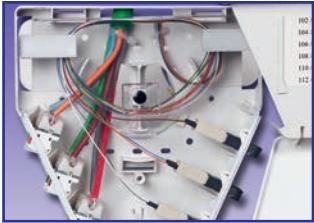
Multi-User Telecommunications Outlet Assembly (MUTOA)

This low-profile multi-user/multimedia surface mount box is unsurpassed in features and flexibility, and is ideal for use as a Multi-user Telecommunications Outlet Assembly (MUTOA) as specified in TIA-568-C.1. It provides storage area for up to 12m (39.4 ft.) of buffered optical fibre cable using our optional fibre management tray and at least 2m (6.6 ft.) of 4-pair twisted pair cable in the base, while maintaining a minimum bend radius of 30mm (1.2 in.).

US and European Compatible — Compatible with any standard single or double gang electrical box including European standards

Storage Capacity — Provides TIA compliance for cable slack while maintaining minimum bend radius requirements

Versatility — MAX® MUTOA accommodates any combination of up to 18 ports of mixed media or up to 36 fibre ports
CT® MUTOA accommodates any combination up to 6 CT couplers

Fibre Management
Optional fibre management trays enable isolation and proper routing of optical fibre cabling.



Innovative Labelling
Hideaway labelling system flips down to reveal a designation area that utilises standard size faceplate designation labels.

MUTOA Ordering Information

| Type | Part # | Description |
|--------------------------------------|------------------|---|
| | (XX)-MMO-(XX) | Multi-user/telecommunications outlet box with cable ties, mounting screws and adhesive tape |
| MX = For use with MAX Modules | Colour | height: 200.2mm (7.8 in.) |
| CT = For use with CT Couplers | 02 = White | width: 200.2mm (7.8 in.) |
| | 20 = Ivory | depth: 57.0mm (2.2 in.) |
| | 80 = Light Ivory | |
| | | Optional fibre management tray sold separately (see below). |

Use (XX) to specify colour: 02 = White, 20 = Ivory, 80 = Light Ivory



Accessories

| Part # | Description |
|------------|---------------------------------------|
| CT-MMO-MAG | Set of 3 magnets for mounting MUTOA |
| FMT | Clear fibre management tray for MUTOA |

MAX Fibre Adapter Outlets

Siemon MAX fibre adapter modules are compatible with all MAX series faceplates, modular furniture adapters, surface mount boxes and patch panels. All fibre adapters are "universal" to support either Multimode or Singlemode fibre connections.

MX-F1-LC(X)-(XX)C. . .

Flat outlet
with 1 duplex LC
adapter (2 fibres)



Use (X) to specify LC adapter colour:
Blank = Beige, U = Blue, Q = Aqua

MX-F1S-LC(X)-(XX). . .

Flat outlet
with 1 simplex LC
adapter (1 fibre)



Use (X) to specify LC adapter colour:
U = Blue, G = Green

MX-F-S2(X)-(XX).

Flat outlet
with 1 duplex ST
adapter (2 fibres)



MX-S2(X)-(XX).

Angled outlet
with 1 duplex ST
adapter (2 fibres)



MX-F-SC(X)-(XX).

Flat outlet
with 1 duplex SC
adapter (2 fibres)



Use (X) to specify ST or SC adapter colour:
Blank = Black, Q = Aqua

MX-SC(X)-(XX).

Angled outlet
with 1 duplex SC
adapter (2 fibres)



MX-F1-SC(X)-(XX).

Flat outlet
with 1 simplex SC
adapter (1 fibre)



Use (X) to specify SC adapter colour:
U = Blue, G = Green

MX-F-SA-(XX)*.

Flat outlet
with 1 simplex ST
adapter (1 fibre)



MX-SA-(XX).

Angled outlet
with 1 simplex ST
adapter (1 fibre)



MX-F-MP-(XX).

Flat outlet
with 1 MTP adapter



Use (XX) to specify colour: 01 = Black, 02 = White, 04 = Grey, 20 = Ivory, 25 = Bright White, 80 = Light Ivory
Outlets include dust caps, one colour-matching, one red, and one blue icon per port.

*Compatible with SM® boxes.

Coax MAX Outlets

For terminating coaxial cables at the work area or telecommunications room, Siemon's coax MAX modules are available with both BNC and F-type adapters. The F-type is available in both flat and angled while the BNC is available in flat only. They each include a space for using colour coded icons to identify type of service.

MX-FA-(XX)

Angled outlet with 1 F-type
adapter, 75 ohms, 2 GHz



MX-F-FA-(XX)*

Flat outlet with 1 F-type
adapter, 75 ohms, 2 GHz



MX-F-BA-(XX)*

Flat outlet with 1 BNC adapter,
75 ohms



Use (XX) to specify colour: 01 = Black, 02 = White, 04 = Grey, 20 = Ivory, 80 = Light Ivory
Outlets include one colour-matching, one red, and one blue icon.

*Compatible with SM® boxes.

MAX Audio/Video Outlets

Siemon audio/video MAX outlets provide connectivity for a wide range of applications. Available media types include RCA, SVHS and HD15.

MX-F-RC-(XX)*

Flat outlet with 1 RCA
connector with solder tail



MX-RC-(XX)

Angled outlet with 1 RCA
connector with solder tail

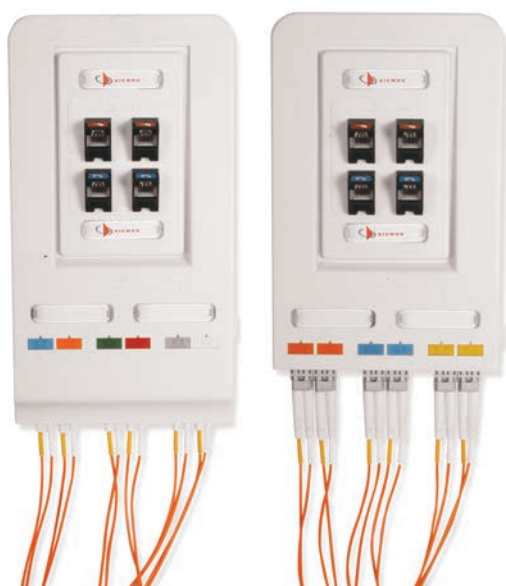


Use (XX) to specify colour: 01 = Black, 02 = White, 04 = Grey, 20 = Ivory, 80 = Light Ivory
RCA Outlets include one colour-matching, one red, and one blue icon.

*Compatible with SM boxes.

Fibre Outlet Box (FOB2)

Siemon's low-profile Fibre Outlet Box (FOB2) is the optimal solution for bringing fibre to the desk. The FOB2 offers a well-defined method for managing fibre cabling at the work area by providing a connection point for up to 12 fibres connectors utilising slide-in bezels.



FOB2-(XX). Includes base, cover, designation labels, clear label covers, mounting hardware, cable ties, icons, and three blank bezels



FOB2-GRD-(XX). Includes base, extended cover, designation labels, clear label covers, mounting hardware, cable ties, icons, and three blank bezels

Use (XX) to specify colour: 01 = Black, 02 = White, 80 = Light Ivory

Fibre Bezels



FOB-BZL-LC(X)1-01.
1 Duplex LC adapter,
(2 fibres)



FOB-BZL-LC(X)-01.
2 Duplex LC adapters,
(4 fibres)



FOB-BZL-SC(X)-01.
1 Duplex SC adapter,
(2 fibres)



FOB-BZL-SA-01.
1 Duplex ST adapter,
(2 fibres)



FOB-BZL-BL-01.
Blank bezel

Use (X) to specify adapter colour: Blank = Beige, U = Blue, Q = Aqua

Note: Fibre adapters are "universal" to support both Multimode and Singlemode.

CT® British Faceplates

The CT series British faceplates are compatible with British standards (85mm x 85mm).

CTE2-FP-02.
Single gang
British style faceplate
for one CT adapter, white



CTE4-FP-02.
Double gang
British style faceplate
for two CT adapters, white



Faceplates include designation labels, clear label cover and M3.5x0.6x25 mounting screws.

CT International Faceplates

CT2-HFPZ-02.
1-Port horizontal Australian/Italian
faceplate for a CT adapter, white



TERA®-MAX® Adapters for CT Faceplates

Designed for use in standard CT faceplates or adapters, adapters feature angled bezel orientation to reduce mounting depth requirements for Z-MAX®, TERA and flat MAX outlets and facilitates gravity feed installation design.



CTE-MXA-01-(XX).
Angled CT adapter for
one MAX, Z-MAX or
TERA outlet



CTE-MXA-02-(XX).
Angled CT adapter for
two MAX, Z-MAX or
TERA outlets



CTE-HZA-02-(XX).
Horizontal CT adapter for
two MAX, Z-MAX or
TERA outlets

Use (XX) to specify colour: 01 = Black, 02 = White

Faceplate Accessories

| Part # | Description |
|-------------------------|--|
| CT-FP-LBL-104*. | 10 sheets of labels for faceplates that will fit any standard 8.5 x 11 printer, 104 labels per sheet |
| CT-FP-CVR. | Bag of 100 clear label covers for CT faceplates |

*Visit our web site or contact our Technical Support Department for labelling software.

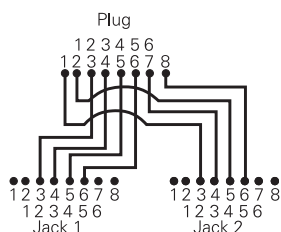
Modular Y-Adapters

Y-Adapters are available as "splitters" which convert one 4-pair jack into two jacks. The Y-Adapters utilise Siemon's patented UP-2468 plug which allows adapters to be used in 6- or 8-position jacks. The adapter body can be rotated 180° to view either the coloured icons or the Y-Adapter pinouts, which are printed on the opposite side.



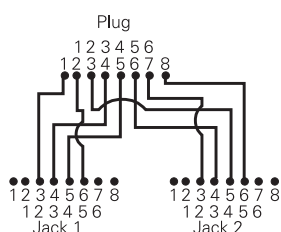
YU4-U2-U2.

Splits a 4-pair USOC jack for Token Ring or voice applications at either jack



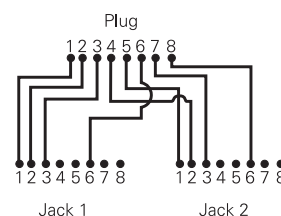
YA4-U2-U2.

Splits a 4-pair T568B jack for Token Ring or voice applications at either jack



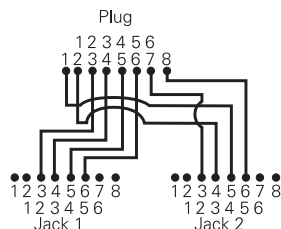
YT4-E2-E2.

Splits a 4-pair T568A/B jack for 10BASE-T applications at either jack



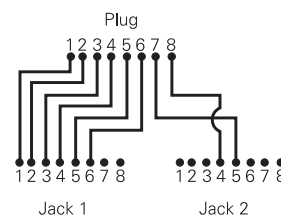
YT4-U2-U2.

Splits a 4-pair T568A jack for Token Ring or voice applications at either jack



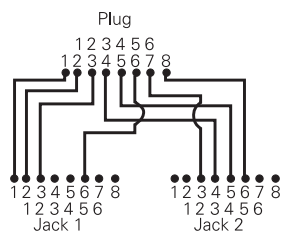
YA4-A3-U1.

Splits a 4-pair T568B jack for 1-, 2- or 3-pair voice and 1-pair voice/modem



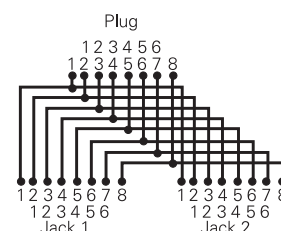
YT4-E2-U2.

Splits a 4-pair T568A/B jack for 10BASE-T and Token Ring or voice applications



Y-BRIDGE.

Bridges all jack pairs. Compatible with any jack wiring. Provides an additional 4-pair jack with the same wiring.

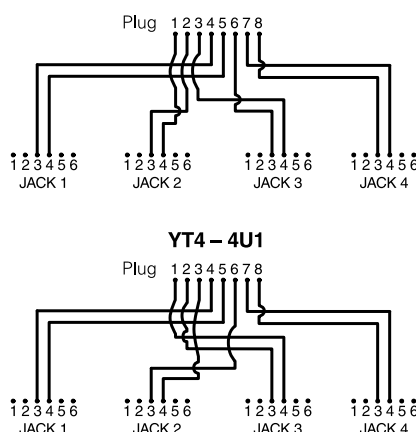


Modular 4-Way Splitter

Siemon's modular 4-way splitter provides access to each individual pair of a 4-pair modular outlet. The splitter converts a single 4-pair outlet to 4 individual 1-pair, 6-position outlets to enable four unique modular connections. The universal plug design enables compatibility with both 6- and 8-position outlets.

YA4-4U1. Modular 4-way splitter, T568B

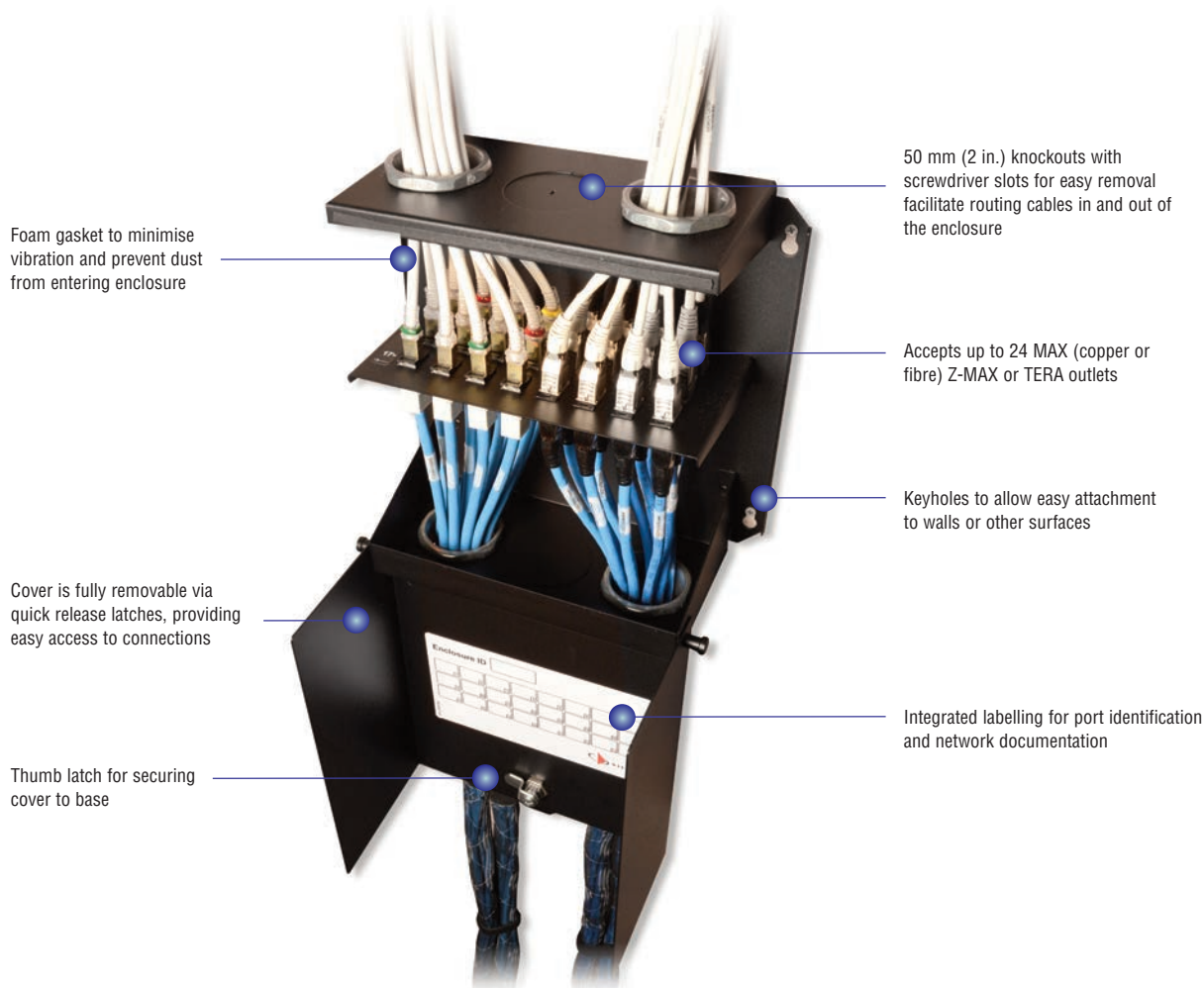
YT4-4U1. Modular 4-way splitter, T568A



Note: These modular adapters meet Category 3 transmission specifications.

24-Port MAX® Zone Unit Enclosure

The 24-Port MAX Zone Unit Enclosure is a flexible, economical solution designed to support zone cabling in a variety of enterprise workspaces, enabling shorter easy-to-manage connections to outlets serving voice, data, video and building automation system equipment. This low-profile enclosure accepts up to 24 ports using flat MAX (copper or fibre) Z-MAX® or TERA® outlets to support a wide range of horizontal copper and fibre applications. Designed to meet UL's plenum rating requirements, the 24-Port MAX Zone Unit enclosure can be easily mounted under a raised floor, in the ceiling, or on the wall.



A fully modular zone box solution that accepts any MAX, Z-MAX or TERA style outlet, enabling flexible copper and fibre distribution for LANs, PONs and intelligent buildings.



Low-profile, economical zone cabling solution that enables shorter links to outlets for significant cost savings over traditional "home run" work area cabling.



Meets plenum and non-plenum rating requirements for flexible mounting under a raised floor, in the ceiling, or on the wall.

Ordering Information

| Part # | Description |
|-----------|--|
| ZU-MX-24P | 24-Port MAX® Zone Unit Enclosure thumb latch, black Includes (4) electrical chase nipples and hardware |



External Dimensions:
height: 305mm (12.03 in.)
width: 274mm (10.5 in.)
depth: 121mm (4.79 in.)

SPECIFICATIONS:

| | |
|---------------------|---|
| Material | Powder Coated, cold rolled steel |
| Material Compliance | RoHS, lead-free, halogen-free, PVC free |
| Safety Compliance | UL 1863 Standard for Communications-Circuit Accessories |
| | UL 2043 Fire Test for Heat and Visible Smoke Release for Discrete Products and Their Accessories Installed in Air-Handling Spaces |
| | UL 2416 Audio/Video, Information and Communication Technology Equipment Cabinet, Enclosure and Rack Systems |

Zone Cabling ROI

While dependent upon the exact number of moves, adds, and changes (MACs) performed per year, typical zone cabling plants of any size planned with 25% spare port availability not only significantly reduce client disruption, but allow the building owner to recoup the cost of the extra port capacity within a two to five year span or after reaching the ROI threshold (i.e. either 14 moves and 17 adds or 16 moves and 20 adds depending upon cabling type).

For more information and a detailed cost analysis on traditional vs. zone cabling please see Siemon's whitepaper titled: "Zone Cabling for Cost Savings" at www.siemon.com.

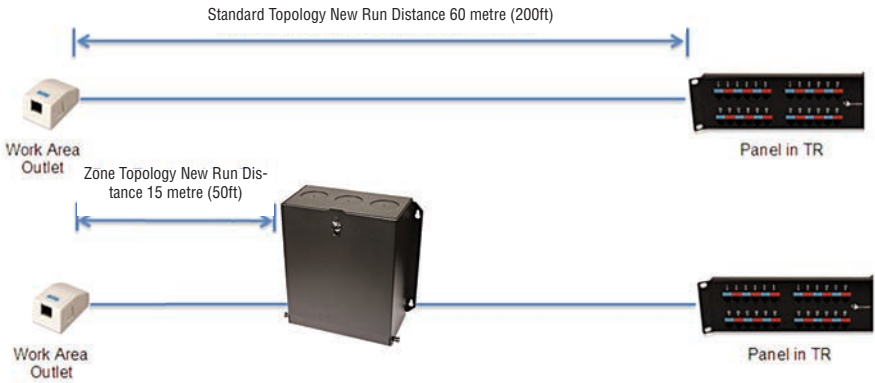
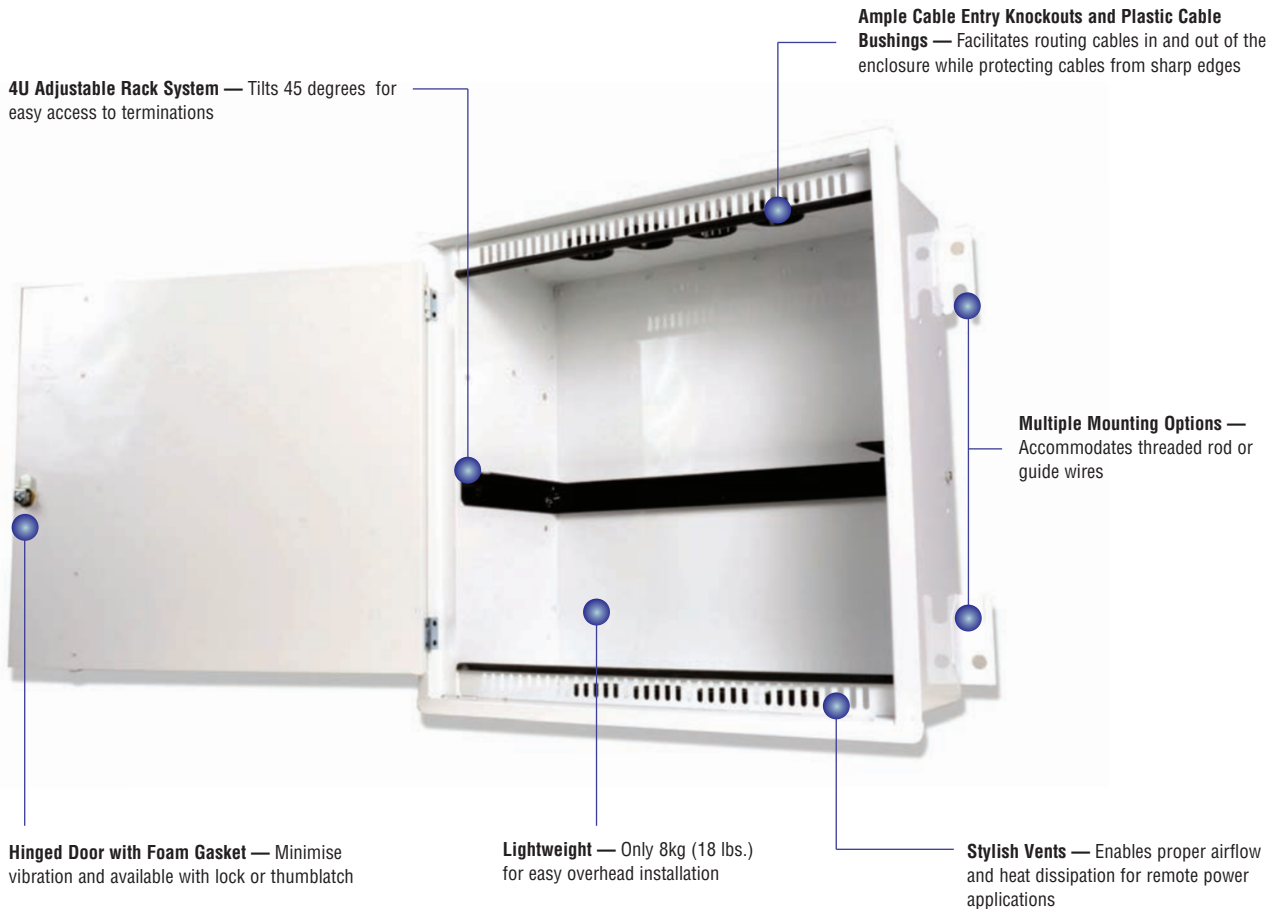


Figure 2: Example 60 metre (200 foot) traditional and zone cabling links depicting new cabling length required to support the addition of a new service

Passive Ceiling Zone Enclosure

The Passive Ceiling Zone Enclosure is a flexible, economic solution to support zone cabling in a variety of enterprise workspaces, enabling shorter easy-to-manage connections directly to building devices such as LED lights, security cameras, wireless access points or building automation controllers, or to outlets serving voice, data or other systems. Designed to meet UL 2043 plenum requirements and install flush within a 0.6 x 0.6m (2 X 2 ft.) drop ceiling tile space, this lightweight EIA/ECA-310-E compliant ceiling enclosure is low profile while offering a 4U adjustable rack system with a recommended maximum 96-port count for copper cabling.



Aesthetically Pleasing — Installs flush within drop ceiling and cut ceiling panels easily slide into the door to blend into decor.



Adjustable — Fully adjustable 4U rack system supports a load capacity of 31.7 kg (70 lbs.) with less depth than other ceiling enclosures.



Accessibility — Hinged door and tilting bracket enable easy access to ports to facilitate terminations in a cost-effective zone cabling topology.

Ordering Information:

| Part # | Description |
|------------------|--|
| ZU-C4P-L02 | Passive Ceiling Zone Enclosure, 4U, white, key lock. Includes 8 plastic bushings |
| ZU-C4P-T02 | Passive Ceiling Zone Enclosure, 4U, white, thumb lock. Includes 8 plastic bushings |
| ZU-CN2-M | Optional 2-inch metal chase nipple. Sold in increments of 1. |



External Dimensions:
 Height: 610mm (2 ft.)
 Width: 610mm (2 ft.)
 Depth: 257mm (10.125 in.)

SPECIFICATIONS

| | |
|-----------------------|---|
| Weight | 8 kg (18 lbs.) |
| Load Rating | Static: 31.7kg (70 lbs.) |
| Colour | White |
| Cable Access Openings | 16 (8 per side) 50mm (2 in.) |
| Material | 15 AWG Aluminium (Door is 16 AWG) |
| Material Compliance | RoHS, Lead free, Halogen free, PVC free |
| Finish | Textured powder coat |
| Standards Compliance | EIA/ECA-310-E UL 1863 Meets UL 2014 Plenum Requirements |

MAX® Low-Profile Zone Unit Enclosure

The MAX Zone Unit Enclosure is an economical, high-density solution designed for use with low-profile sub-floor applications including Flexspace Cablefloor® and Haworth Nexus™. Enclosures are available to accommodate up to 48 ports of media using flat MAX, Z-MAX® and TERA® series modules and feature a 44.5 x 101.6mm (1.75 x 4.0 in.) opening for cable entry. Cable tie anchor points (hook and loop cable managers included) and fibre managers are conveniently located within the enclosure for proper routing and securing of cabling.

The enclosures are constructed of durable 16 gauge steel and feature a simple two piece design with a base and cover secured by four #6-32 screws. There are four mounting holes in the base for securing the enclosure to a mounting surface. The 48-port version includes internal support posts to provide additional structural support.

| Part # | Description |
|--------------------|--|
| ZU-MX-48..... | 48-Port MAX low-profile Zone Unit Enclosure height: 44.5mm (1.75 in.) width: 254.0mm (10.0 in.) depth: 377.8mm (14.9 in.) |
| ZU-MX-24-0515..... | 24-Port MAX low-profile Zone Unit Enclosure height: 44.5mm (1.75 in.) width: 114.3mm (5.5 in.) depth: 377.8mm (14.9 in.) |

