

Knürr CoolDesk®

*The Comfort Desk Solution For Banks,
Insurance Companies And Process-Controlled Industries.
Efficient Water Cooling And Targeted Airflow Routing.*



Knürr CoolDesk® – Comfort Desk Solution For Flexible Technology Integration

Today's working environment, being changed constantly by the rapid advances in IT technology, presents Knürr with the continuous challenge of further developing special workstation environments that incorporate computing units, communication electronics and screens, and which help to keep rooms at optimum thermal conditions.

The innovative Knürr CoolDesk® unites Knürr expertise – know-how from the 19-inch technology area, thermal management and experience in the installation of modular workstations. These are the factors that enable the development of flexible and individual customer-specific solutions.



Knürr provides the perfect platform for setting up a scalable solution that also keeps pace with future challenges. Our thermal engineers and workstation experts implement test procedures to ensure that all applicable requirements and standards are complied with.

■ Energy efficiency

Targeted airflow routing

- In the installation space:
The cooled air is routed to the front of the computer where the air is optimally pulled in and can be taken into the circulation.
Knürr CoolDesk® provides an ideal temperature for electrical and electronic devices with minimum energy consumption.

- At monitor level:
Issuing the cooled air via individually adjustable air outlets enables optimum monitor cooling.

- Room climate:
The room temperature can be specifically influenced by the warm airflow routing. The cooling system does not apply for the monitors alone – it also applies for the complete room climate.

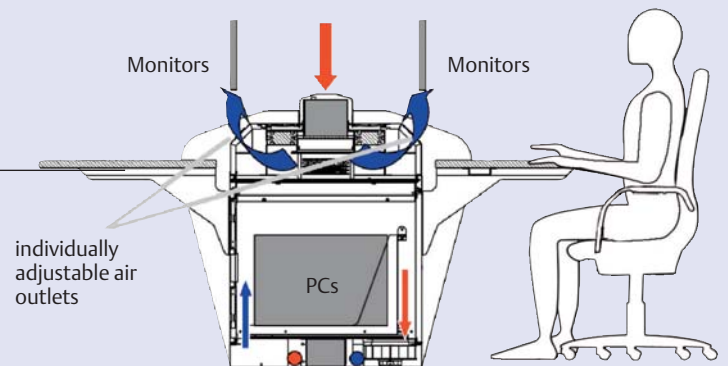
Open air circulation for the monitor and room cooling/thermal management

Targeted air-flow routing for thermally managing the room

Targeted air-flow routing at monitor level

Closed air circulation for cooling electrical components in the underdesk installation space

Targeted air-flow routing in the underdesk installation space



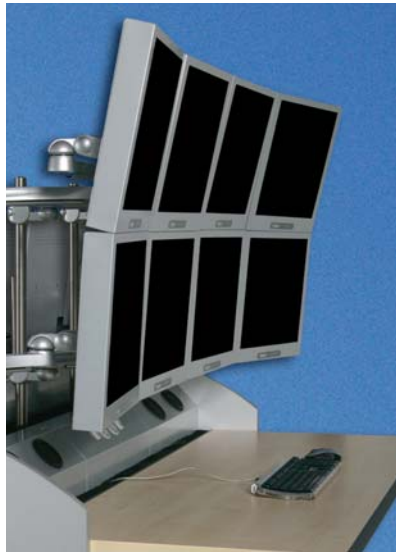
Energy/power-saving

- Every system can be separately fed, controlled and checked.
- Two independent heat exchangers enable requirements-oriented usage that significantly reduces operating costs!
- Height adjustment with easier and more cost-effective water supply and drainage.
- Significantly reduces the demands on room cooling.



Operational reliability

- Monitoring of:
 - Temperature
 - Leakages
 - Smoke
- Protected technology in the workstation environment optimizes the process flows, e.g. in dealer rooms or control centers.



Investment security

- Long life service, high quality, perfected and modern design.
- System modularity enables flexible retrofitting.
- Intelligent cable management: Dust-protected cable management with brush strip across the entire desk width and a spacious cable duct in the installation space.
- Expertise in thermal management and long-standing experience gathered over many years.



Ergonomics and quality design

- The demands on an ultramodern and process-oriented work environment are fully satisfied with the integration of occupational therapy know-how.
- Low-noise working ensured by sound absorption at the workstation. Specially developed acoustic concept (max. 35 db (A)) ensures pleasant environment and working conditions.
- Incorporation of customer-specific design requests.
- Optionally height adjustable. Individual work height guarantees dynamic changing between standing and sitting.
- Additional monitor level possible.

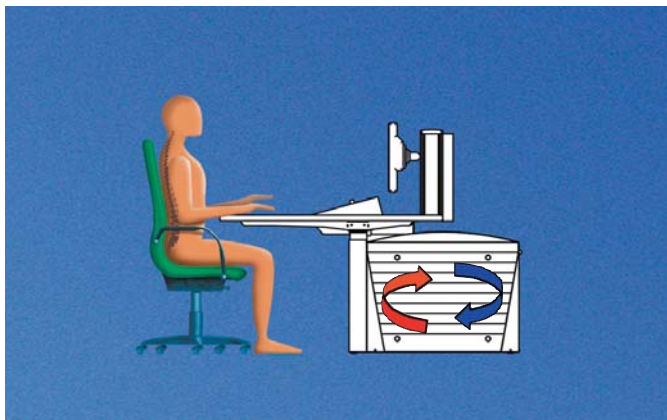
Flexible arrangement possibilities in the room

From individual standard modules through to customer-specific process environments – numerous integrated solutions are possible for the control room.

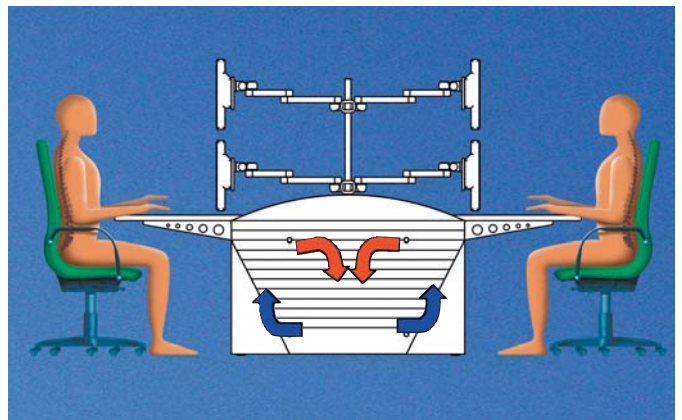


 made
in
Germany

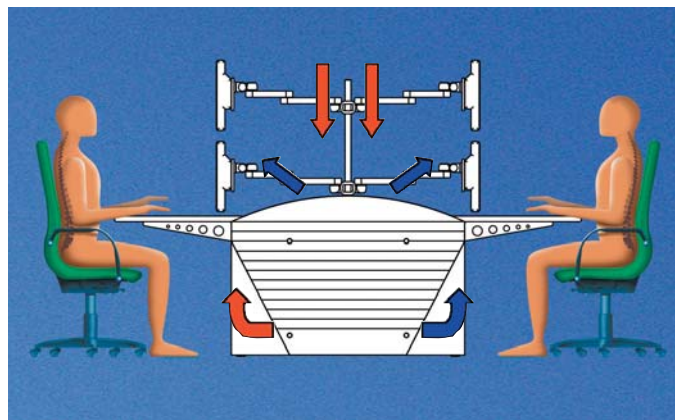
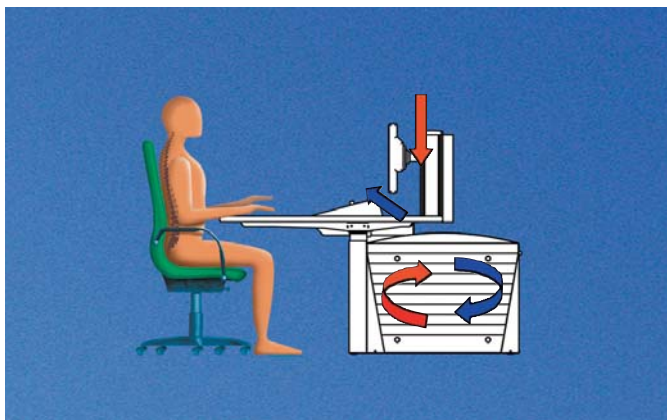
■ **Single workstation
with horizontal airflow routing**



■ **Double workstation
with vertical airflow routing**



■ **Monitor cooling and work area/room cooling**



- Possibility of connecting to existing piping in the raised floor.
- Connection to building system with the option of integrating the Knürr CoolTrans® for constantly even water supply.

- Solution via chiller, connection to a complete Knürr supply system.
- Only one water flow required! No airflow routing. This saves space, cost and energy.
- Separate heat exchanger in superstructure and underdesk installation space.

Emerson Network Power is the global technology leader in numerous areas, and a recognized expert in helping to secure business-critical processes, and therefore contributes to “business-critical continuity.” A whole range of the most varied applications, including the tried and tested Knürr rack system solutions and the accompanying thermal management, ensures the required network stability with maximum technological adaptability at the same time.

Knürr system solutions in the world of information and network technology are part of an adaptive architecture from Emerson Network Power, which flexibly adapts to changes concerning security, high-density and all associated capacities. Companies are provided sustainable and long-term benefits from the high IT availability, operative flexibility and impressive reduction in investment and operating costs.

The Knürr Technical Furniture business unit develops, produces and distributes technical workstation systems for control consoles, operation control centers and electronics labs, as well as mobile equipment carriers for the automotive and medical technology industries.

Knürr AG is recognized around the world as one of the leading developers, manufacturers and distributors of rack and enclosure platforms in the indoor and outdoor area, including all relevant active/passive components in 19” construction and the technologies associated with it. Knürr is part of Emerson Network Power.

Knürr is certified in accordance with EN ISO 9001 and EN ISO 14001, and its quality management continuously guarantees the highest standards in all areas of the company.

Emerson Network Power

The global leader in enabling business-critical continuity

- | | | | |
|--------------------|--------------------------------|------------------------------|-----------------------------|
| ■ AC Power Systems | ■ Embedded Power | ■ Power Switching & Controls | ■ Site Monitoring |
| ■ Connectivity | ■ Integrated Cabinet Solutions | ■ Precision Cooling | ■ Surge & Signal Protection |
| ■ DC Power Systems | ■ Outside Plant | ■ Services | ■ Rack & Enclosure Systems |

Knürr logo, Emerson Network Power and the Emerson Network Power logo are trademarks and service marks of Emerson Electric Co. ©2008 Emerson Electric Co.

Knürr AG Global Headquarters

Mariakirchener Straße 38
94424 Arnstorf • Germany
Tel. +49 (0) 87 23 / 27 - 0
Fax +49 (0) 87 23 / 27 - 154
info@knuerr.com

Knürr Technical Furniture GmbH Business Unit

Hauptstraße 35
94439 Münchsdorf • Germany
Tel. +49 (0) 87 23 / 28 - 0
Fax +49 (0) 87 23 / 28 - 138

Local contacts, please visit:

www.knuerr.com
www.emerson.com
www.technical-furniture.com

While every precaution has been taken to ensure accuracy and completeness in this literature, Knürr AG assumes no responsibility, and disclaims all liability for damage resulting from use of this information or for any errors or omissions.

©2008 Knürr AG. All rights reserved throughout the world. Specifications subject to change without notice.

All names referred to are trademarks or registered trademarks of their respective owners.

®Knürr and the Knürr logo are registered trademarks of Knürr AG.

EmersonNetworkPower.com