

# Marshall Tufflex



STERLING MONO PLUS 20  
ALUMINIUM from

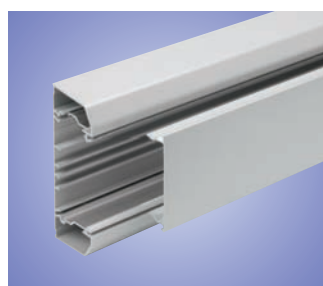




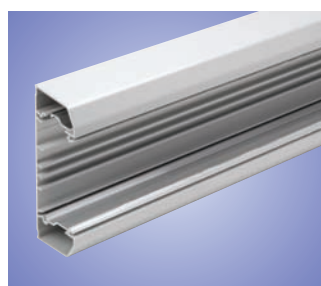
## STERLING MONO PLUS 20 ALUMINIUM

Sterling Mono Plus 20 is an elegant three compartment, fully-screened Cable Management system with clean lines and a highly durable powder coated finish in silver grey or white as standard.

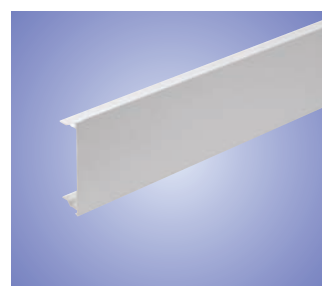
- 140 x 50mm trunking systems with a single lid.
- Secure external bend with two patented internal segregators offering minimum bend radius of 25mm to control cable to optimum performance.
- The aluminium Dividing Fillet allows screening for each compartment.
- Internal bend has a chamfered face to assist with cable control on the inside of a bend.
- Includes a range of one piece polycarbonate clip-on fittings with built-in overlaps.
- Fully compatible with Sterling flush accessories.



**Sterling Mono Plus20**  
Size: 140 x 50mm



**Trunking (Base and 2 Dividing Segregators)**  
Prod Code EMT320SG Pack 1 x 3m



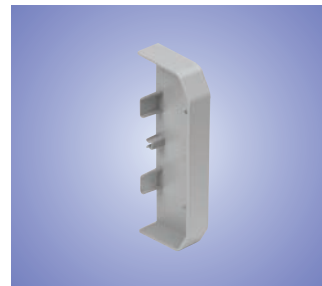
**Main Compartment Lid**  
Prod Code LTL1SG Pack 1 x 3m



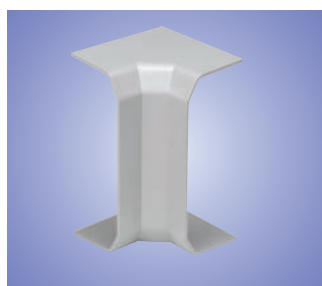
**Dividing Fillet**  
Prod Code EDF1 Pack 8 x 3m



**Coupler**  
Prod Code EC420SG Pack 1



**End Cap**  
Prod Code EEC420SG Pack 1



**Internal Bend**  
Prod Code EIB420SG Pack 1



**External Bend**  
Prod Code EXB420WH Pack 1



**Flat Angle – Fabricated**  
Prod Code EFA320SG Pack 1



**Flat Tee – Fabricated**  
Prod Code EFT320SG Pack 1



## STERLING MONO PLUS 20 ALUMINIUM continued



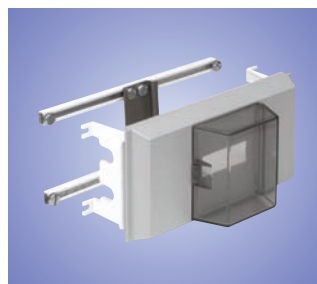
**Main Crossover Bridge**

Prod Code	Pack
EMCB1	5



**Main Cable Retainer**

Prod Code	Pack
EMCR1	10



**RCD/MCB Housing**

Prod Code	Pack
EAH5SG	1
EAHC5SG with cover (as shown)	1



**Bonding Terminal Assembly**

Prod Code	Pack
LBT1 Incoming 16mm <sup>2</sup>	5



**Bonding Strap**

Prod Code	Pack
LBS1 Base to Base 32 Amp	5



**Bonding Strap**

Prod Code	Pack
LBS2 Cover to Base	5

### BONDING ASSEMBLIES



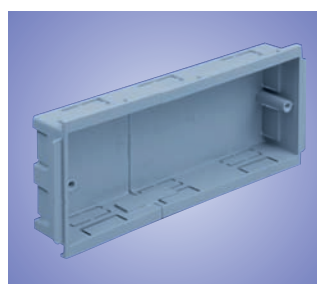
**Single Gang Accessory Box**

Prod Code	Depth	Pack
ESSB1SG	30mm	20



**Twin Gang Accessory Box**

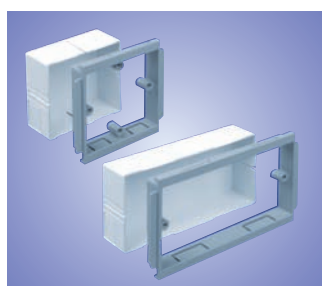
Prod Code	Depth	Pack
ESSB2SG	30mm	10



**Triple Gang Accessory Box**

Prod Code	Depth	Pack
ESSB3SG	30mm	4

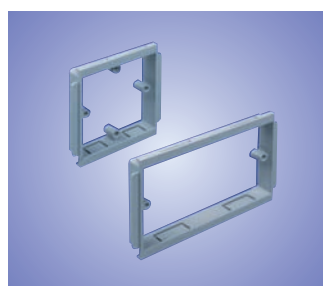
### ACCESSORY BOXES



**Adjustable Accessory Box**

Prod Code	Size	Pack
EAB1SG	Single	10
EAB2SG	Twin	5

Depth: 32– 40mm

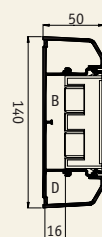


**Accessory Plate**

Prod Code	Size	Pack
ESSP1SG	Single	10
ESSP2SG	Twin	5

### STERLING MONO PLUS 20 ALUMINIUM DIMENSIONS AND CAPACITIES

The installation should be in accordance with the latest edition of BS7671 (Wiring Regulations).



#### STERLING MONO PLUS 20 AND ACCESSORY BOX (30mm)

B = 1185 sq mm total  
area 45% space factor  
= 533 sq mm.  
D = 1024 sq mm total  
area 45% space factor  
= 461 sq mm.

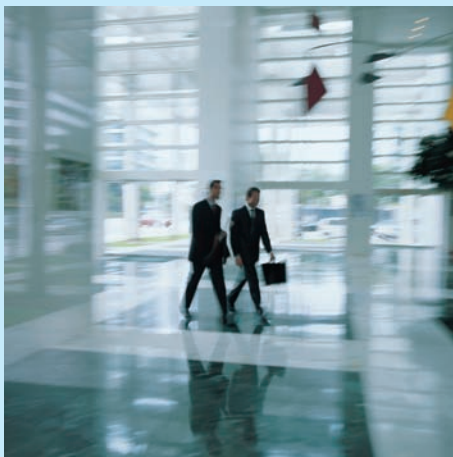
**FOR ADDITIONAL  
ACCESSORIES  
AND BOXES SEE  
PAGES 69 TO 75  
OF MAIN  
CATALOGUE**

**Colour Code  
Suffix**  
Please replace the  
last two letters  
with those  
detailed below.

Code	Colour
SG	Silver Grey
WH	White

**FOR MATERIAL AND INSTALLATION  
DETAILS, SEE PAGES 208 AND 234  
RESPECTIVELY OF  
THE MAIN MARSHALL-TUFFLEX  
ISSUE ONE CATALOGUE.**

Marshall-Tufflex offer a large range of Aluminium Cable Management Systems. Please contact us for further details or to request a catalogue.



## MARSHALL-TUFFLEX LTD

Churchfields Industrial Estate, Hastings, East Sussex TN38 9PU

**Customer Services:** Telephone: 0870 240 3200

Fax: 0870 240 3201

**Technical Hotline:** Telephone: +44 (0) 1424 856688

**International Sales:** Telephone: +44 (0) 1424 856000

Fax: +44 (0) 1424 856666

**E-mail:** [sales@marshall-tufflex.com](mailto:sales@marshall-tufflex.com)

**Web:** [www.marshall-tufflex.com](http://www.marshall-tufflex.com)

## REPUBLIC OF IRELAND DISTRIBUTOR

Core Electrical Ltd, 17b Goldenbridge Industrial Estate, Tyrconnell Road, Inchicore, Dublin 8

Tel: +353 (0)1 453 7085/33

Fax: +353 (0)1 453 8911

In pursuance of our policy of continued product improvement Marshall-Tufflex reserves the right to change the design or specification of its products without notification.

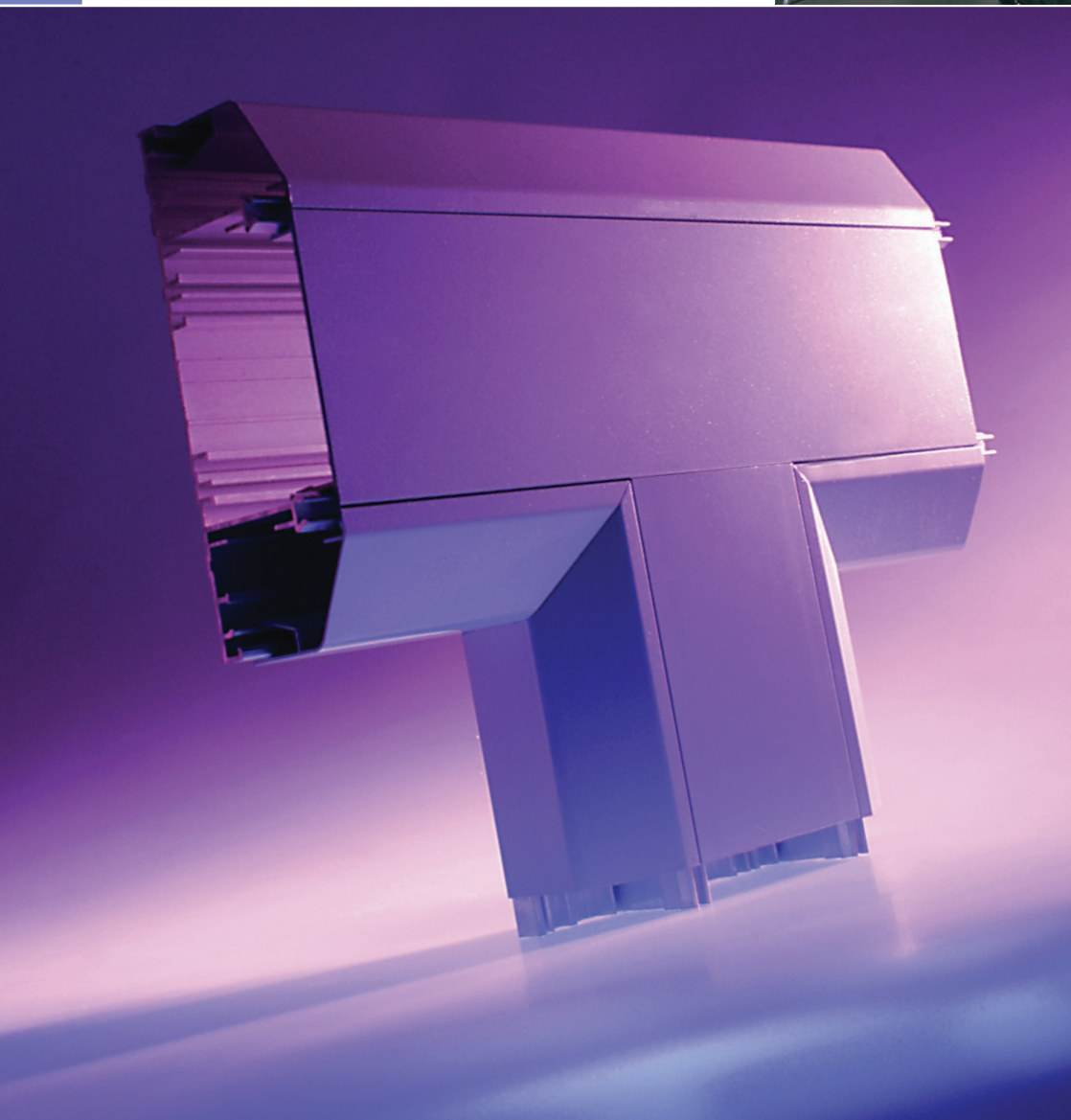




# ALUMINIUM CONTAINMENT SYSTEMS

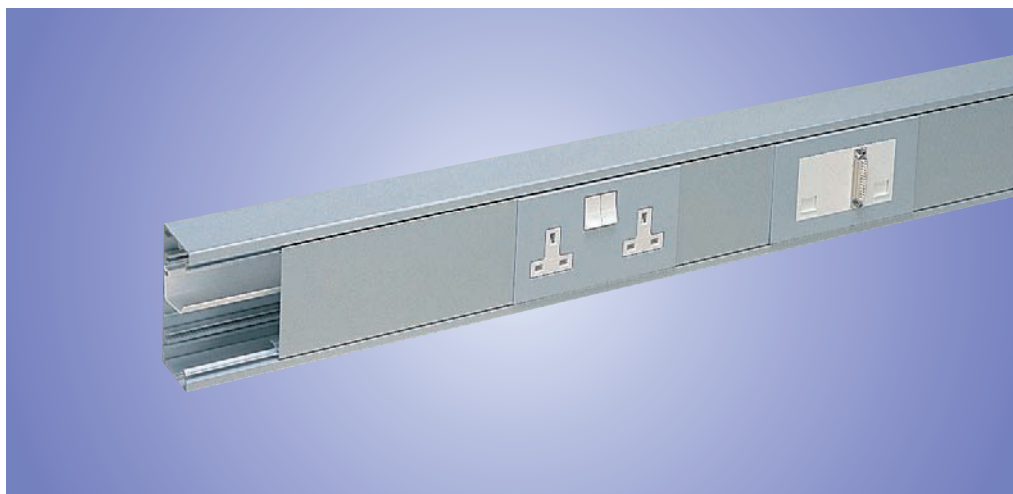
**Aluminium Containment Systems are ideal for commercial, industrial, workshop and laboratory use. Manufactured from high precision extruded aluminium they incorporate all the style and adaptability that are the hallmarks of our Sterling range.**

- Seven different Aluminium Systems.
- Surface finishes include silver grey or white powder-coat as standard. Additional colours are available on request.
- Compatible with the full range of Sterling Accessories.
- A range of polycarbonate clip on fittings are available.



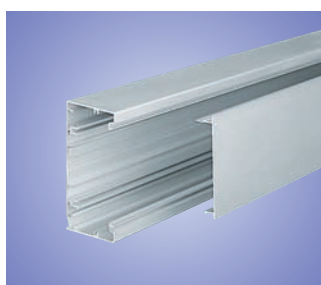
Section Contents	Pages
Sterling Elegance	157-158
Sterling Profile	159-164
Sterling XL	165-170
Sterling Twin Plus	171-173
Series R	174
Sovereign Plus Skirting	175
Bench Trunking	176-177

# STERLING ELEGANCE ALUMINIUM



Traditional rectangular aluminium trunking with a single lid and suitable for dado or skirting installations.

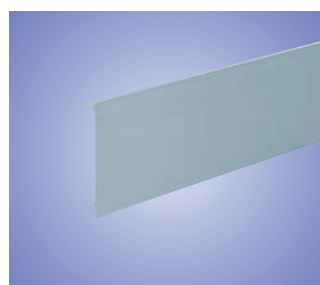
- 110mm x 55mm.
- Can be subdivided into three compartments.
- Fully compatible with Sterling Accessories.
- Can accommodate the 63 Amp Sterling Busbar System.
- Silver or white powder-coated as standard.
- Colours or foils on request.



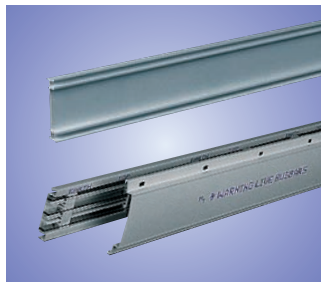
**Aluminium Profile S**  
Size: 110 x 55mm



**Rectangular Base**  
Prod Code                      Pack  
LTB2SG                              1 x 3m



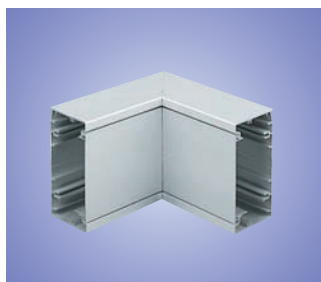
**Main Compartment Lid**  
Prod Code                      Pack  
LTL1SG                              1 x 3m



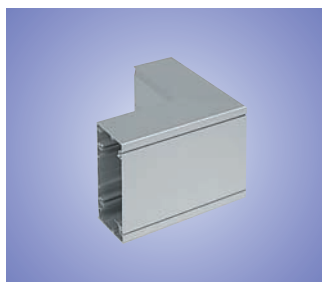
**Busbar Adaptor and Assembly**  
Prod Code                      Pack  
LAC1                      Adaptor      1 x 3m  
GRA1                      Assembly      1 x 3m



**End Caps** (screws included)  
Prod Code                      Pack  
LECPSSG                              1



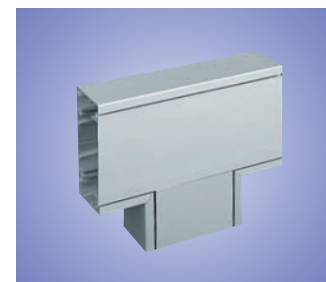
**Internal Bend**  
Prod Code                      Pack  
LIBPSSG                              1



**External Bend**  
Prod Code                      Pack  
LXBPSSG                              1



**Standard Flat Angle**  
Prod Code                      Pack  
LFASSG                              1



**Standard Flat Tee**  
Prod Code                      Pack  
LFTSSG                              1

**FOR STERLING  
BUSBAR FITTINGS  
SEE PAGES  
64 TO 67**

**OPTIONAL COLOURS AND FINISHES ARE  
AVAILABLE SUBJECT TO LONGER LEAD TIMES.  
TELEPHONE 01424 856688  
FOR INFORMATION.**

## Colour Code Suffix

Please replace the  
last two letters  
with those  
detailed below.

Code	Colour
SG	Silver Grey
WH	White



## STERLING ELEGANCE ALUMINIUM continued

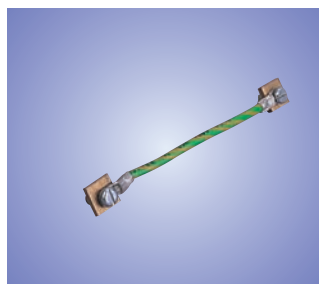
### BONDING ASSEMBLIES AND ADDITIONAL COMPONENTS

Covers and Base are bonded to earth potential, refer to BS 7671 (Wiring Regulations).



#### Bonding Terminal Assembly

Prod Code		Pack
LBT1	Incoming 16mm <sup>2</sup>	5
LBT2	Base to Base 63 Amp	5



#### Bonding Strap

Prod Code		Pack
LBS1	Base to Base 32 Amp	5



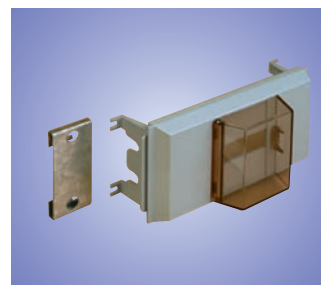
#### Bonding Strap

Prod Code		Pack
LBS2	Cover to Base	5



#### Dividing Fillet

Prod Code		Pack
LDF1	8 x 3m	
LDFS1	Screened 8 x 3m	

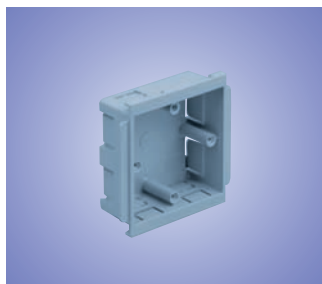


#### RCD/MCB Housing

Prod Code		Pack
EAH1SG		1
EAHC1SG with cover (as shown)		1

Up to 4 modules can be accommodated, RCD not supplied by Marshall-Tufflex.

### BOXES



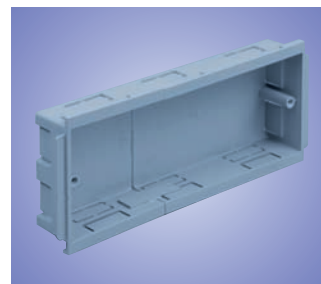
#### Single Gang Accessory Box

Prod Code	Depth	Pack
ESSB1SG	30mm	20



#### Twin Gang Accessory Box

Prod Code	Depth	Pack
ESSB2SG	30mm	10



#### Triple Gang Accessory Box

Prod Code	Depth	Pack
ESSB3SG	30mm	4



#### Single Gang Adjustable Accessory Box

Prod Code	Depth	Pack
EAB1SG	32-40mm	10



#### Twin Gang Adjustable Accessory Box

Prod Code	Depth	Pack
EAB2SG	32-40mm	5



#### Single Gang Accessory Plate

Prod Code		Pack
ESSP1SG		10



#### Twin Gang Accessory Plate

Prod Code		Pack
ESSP2SG		5

#### Colour Code Suffix

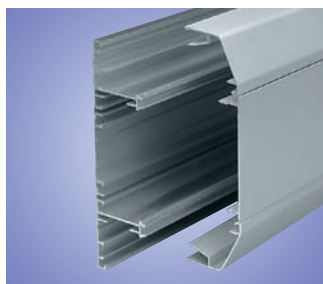
Please replace the last two letters with those detailed below.

Code	Colour
SG	Silver Grey
WH	White

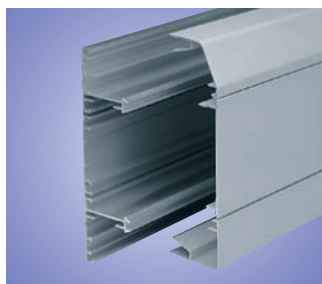
**FOR ADDITIONAL ACCESSORIES AND BOXES SEE PAGES 69 TO 75**



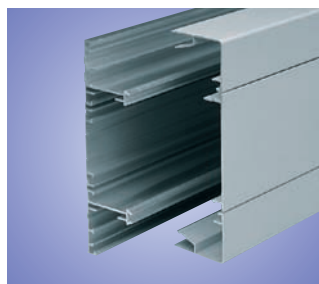
# STERLING PROFILE ALUMINIUM



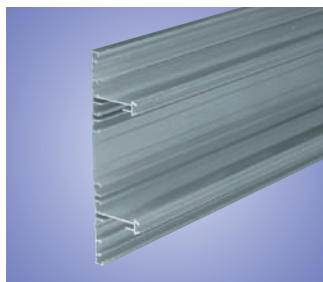
**Profile 3001**  
Size: 167 x 50mm



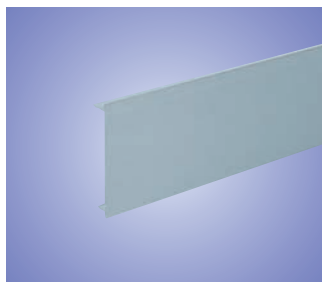
**Profile 3002**  
Size: 167 x 50mm



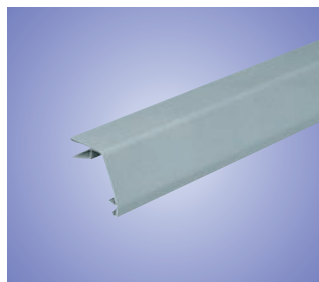
**Profile 3003**  
Size: 167 x 50mm



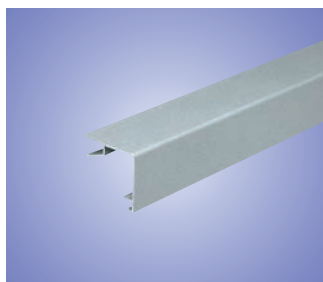
**Base Unit**  
Prod Code                      Pack  
ETB300MF                      1 x 3m  
Mill finish.



**Main Compartment Lid**  
Prod Code                      Pack  
LTL1SG                          1 x 3m



**Angled Cover**  
Prod Code                      Pack  
ETAC300SG                      1 x 3m

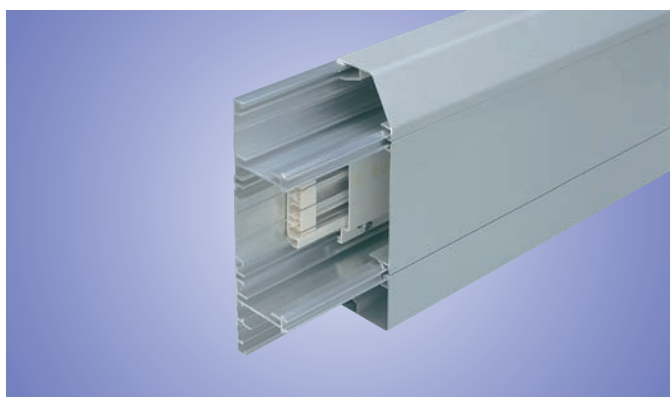


**Square Cover**  
Prod Code                      Pack  
ETSC300SG                      1 x 3m



**Busbar Assembly**  
Prod Code                      Pack  
GRA1                              1 x 3m

- Versatile aluminium trunking with variable profiles and suitable for dado or skirting installations.
- 167mm x 50mm.
  - Three compartments that can be subdivided.
  - Individual covers for each compartment.
  - Fittings and accessories with built-in overlaps.
  - A range of polycarbonate clip-on fittings.
  - Comprehensive range of flush power and data accessories.
  - Fully compatible with Sterling Accessories.
  - Can accommodate the 63 Amp Sterling Busbar System.
  - Silver or white powder-coated as standard.
  - Other colours or foils on request.



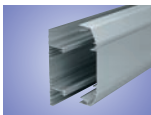
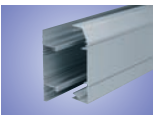
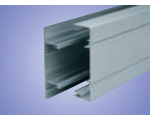
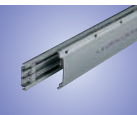
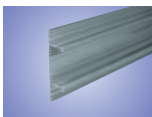
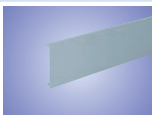








Colour Code Suffix	
Please replace the last two letters with those detailed below.	
Code	Colour
SG	Silver Grey
WH	White





# STERLING PROFILE ALUMINIUM continued

## STERLING PROFILE ALUMINIUM COMPONENT CHART

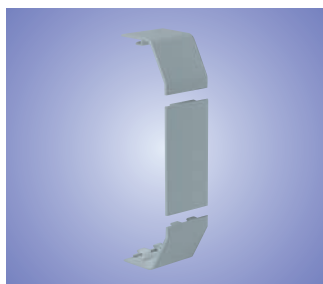
STERLING PROFILE ALUMINIUM COMPONENT CHART		3 Compartment			
		Profile 3001	Profile 3002	Profile 3003	Busbar Assembly
		167 x 50mm	167 x 50mm	167 x 50mm	
					
<b>Base Unit</b>		ETB300	ETB300	ETB300	GRA1
Pack	1 x 3m				
<b>Main Compartment Lid</b>		LTL1SG	LTL1SG	LTL1SG	—
Pack	1 x 3m				
<b>Angled Cover</b>		2 x ETAC300SG	ETAC300SG	—	—
Pack	1 x 3m				
<b>Square Cover</b>		—	ETSC300SG	2 x ETSC300SG	—
Pack	1 x 3m				
<b>Couplers</b>		ECP401SG	ECP402SG	ECP403SG	GTB1
Pack	5				
<b>End Caps</b>		EECP401SG	EECP402LHSG EECP402RHSG	EECP403SG	GTC1
Pack	5				
Left or right handed.					
<b>Internal Bends</b>		EIBP401SG	EIBP402SG	EIBP403SG	GCA1
Pack	5				
<b>External Bends</b>		EXBP401SG	EXBP402SG	EXBP403SG	GCA1
Pack	5				
<b>Flat Angles</b>		EFAP3001SG	EFAP3002USG EFAP3002DSG	EFAP3003SG	GCA1
Pack	1				
Upward or Downward.					
<b>Flat Tees</b>		EFTP3001SG	†	EFTP3003SG	GCA1
Pack	1				

† Contact **Technical Hotline 01424 856688** for advice.  
Covers and base are to be bonded to earth potential,  
refer to BS 7671 (Wiring Regulations).



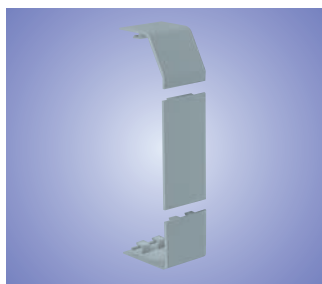
Colour Code Suffix	
Please replace the last two letters with those detailed below.	
Code	Colour
SG	Silver Grey
WH	White

## COUPLERS



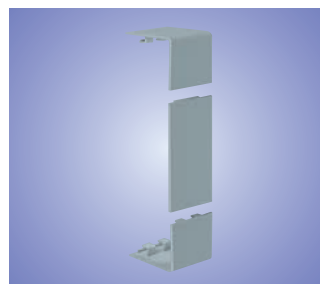
**Coupler – Profile 3001**

Prod Code	Pack
ECP401SG	5



**Coupler – Profile 3002**

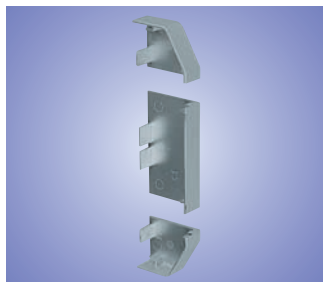
Prod Code	Pack
ECP402SG	5



**Coupler – Profile 3003**

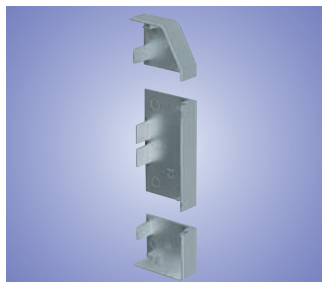
Prod Code	Pack
ECP403SG	5

## END CAPS



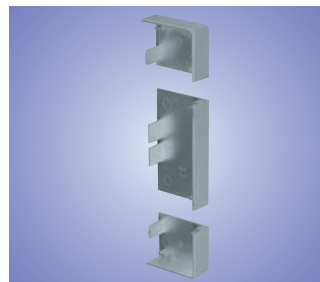
**End Cap – Profile 3001**

Prod Code	Pack
EECP401SG	5



**End Cap – Profile 3002**

Prod Code	Pack
EECP402LHSG (Left Hand)	5
EECP402RHSG (Right Hand)	5



**End Cap – Profile 3003**

Prod Code	Pack
EECP403SG	5



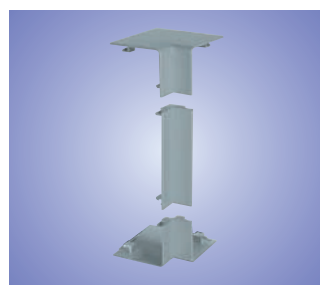
**Internal Bend – Profile 3001**

Prod Code	Pack
EIBP401SG	5



**Internal Bend – Profile 3002**

Prod Code	Pack
EIBP402SG	5



**Internal Bend – Profile 3003**

Prod Code	Pack
EIBP403SG	5

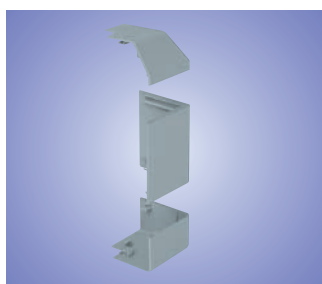
## INTERNAL BENDS

Internal base corner requires to be mitred.



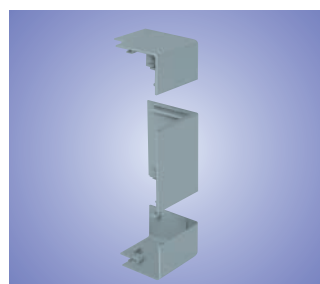
**External Bend – Profile 3001**

Prod Code	Pack
EXBP401SG	5



**External Bend – Profile 3002**

Prod Code	Pack
EXBP402SG	5



**External Bend – Profile 3003**

Prod Code	Pack
EXBP403SG	5

## EXTERNAL BENDS

External base corner requires to be mitred.

### Colour Code Suffix

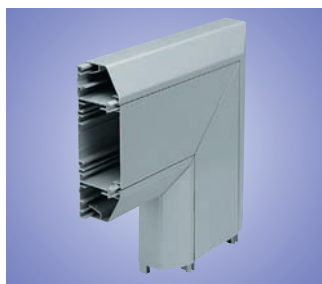
Please replace the  
last two letters  
with those  
detailed below.

Code	Colour
SG	Silver Grey
WH	White



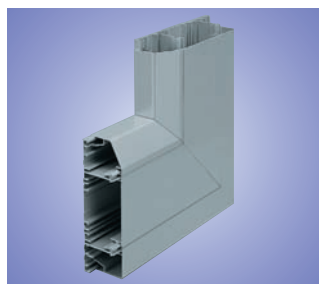
## STERLING PROFILE ALUMINIUM continued

### FABRICATED FITTINGS



**Standard Flat Angle – Profile 3001**

Prod Code	Pack
EFAP3001SG	1



**Upward Flat Angle – Profile 3002**

Prod Code	Pack
EFAP3002USG	1



**Downward Flat Angle – Profile 3002**

Prod Code	Pack
EFAP3002DSG	1



**Standard Flat Angle – Profile 3003**

Prod Code	Pack
EFAP3003SG	1



**Flat Tee – Profile 3001**

Prod Code	Pack
EFTP3001SG	1



**Flat Tee – Profile 3003**

Prod Code	Pack
EFTP3003SG	1

### BONDING ASSEMBLIES



**Bonding Terminal Assembly**

Prod Code	Pack
LBT1 Incoming 16mm <sup>2</sup>	5
LBT2 Base to Base 63 Amp	5



**Bonding Strap**

Prod Code	Pack
LBS1 Base to Base 32 Amp	5



**Bonding Strap**

Prod Code	Pack
LBS2 Cover to Base	5

**Colour Code Suffix**  
Please replace the last two letters with those detailed below.

Code	Colour
SG	Silver Grey
WH	White



## BOXES



**Single Gang Accessory Box**

Prod Code	Depth	Pack
ESSB1SG	30mm	20



**Twin Gang Accessory Box**

Prod Code	Depth	Pack
ESSB2SG	30mm	10



**Triple Gang Accessory Box**

Prod Code	Depth	Pack
ESSB3SG	30mm	4



**Single Gang Adjustable Accessory Box**

Prod Code	Depth	Pack
EAB1SG	32–40mm	10



**Twin Gang Adjustable Accessory Box**

Prod Code	Depth	Pack
EAB2SG	32–40mm	5



**Single Gang Accessory Plate**

Prod Code	Pack
ESSP1SG	10



**Twin Gang Accessory Plate**

Prod Code	Pack
ESSP2SG	5

**FOR ADDITIONAL  
ACCESSORIES  
AND BOXES SEE  
PAGES 69 TO 75**





## STERLING PROFILE ALUMINIUM continued

### ADDITIONAL COMPONENTS

#### EACB1/ESCB1/EMCB1 Crossover Bridges

Provide segregation of services crossing from one compartment to another.



**Angled Crossover Bridge**

Prod Code	Pack
EACB1	5



**Square Crossover Bridge**

Prod Code	Pack
ESCB1	5



**Main Crossover Bridge**

Prod Code	Pack
EMCB1	5

#### EACR1 Angled Cable Retainer

Clips to nibs to provide additional cable retention in the upper angled or square compartment. For the lower angled or square compartment, Cable Tray is recommended.



**Angled Cable Retainer**

Prod Code	Pack
EACR1	10



**Main Cable Retainer**

Prod Code	Pack
EMCR1	10



**Cable Tray**

Prod Code	Pack
ECT1	8 x 3m

#### EMCR1 Main Cable Retainer

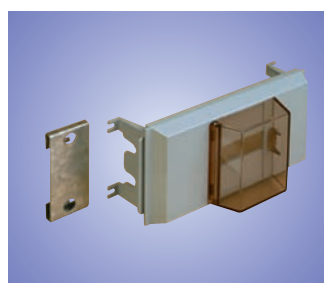
The recommended cable retainer for all compartments which use the ETL1 Lid.

#### ECT1 Cable Tray

Provides support of cables in lower compartment when angled or square cover is used.

#### EAHC1SG RCD/MCB Housing

Can also be used with Busbar Sterling. Up to 4 modules can be accommodated. RCD not supplied by Marshall-Tufflex.



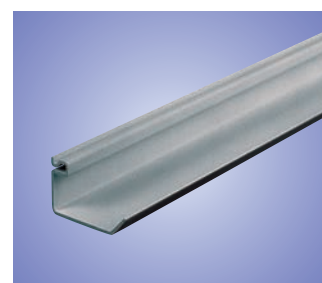
**RCD/MCB Housing**

Prod Code	Pack
EAH1SG	1
EAHC1SG with cover (as shown)	1



**Dividing Fillet**

Prod Code	Pack
EDF1	Outer 8 x 3m



**Busbar Compartment Dividing Fillet**

Prod Code	Pack
EDF2	8 x 3m

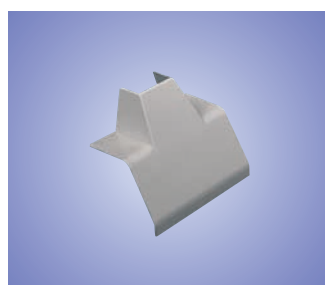
#### EDF1/EDF2 Dividing Fillet

EDF1 allows additional segregation of services. EDF2 allows for additional segregation on ETB1 (Main compartment only).

#### EATASG/ESTASG

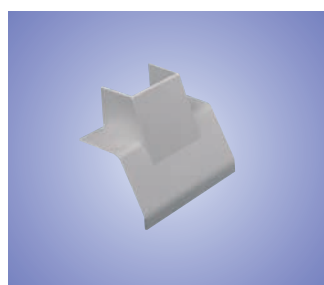
##### Mini-Trunking Adaptors

Allows the transfer of cables from Sterling to Marshall-Tufflex Mini-Trunking, sizes MMT2 and MMT4. Adaptors supplied in Polycarbonate.



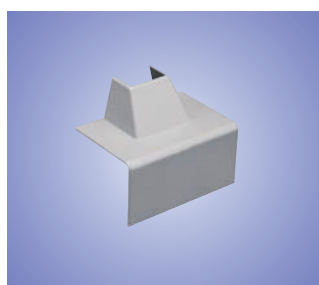
**Angled Mini-Trunking Adaptor**

Prod Code	Size	Pack
EATA402SG	MMT2	5



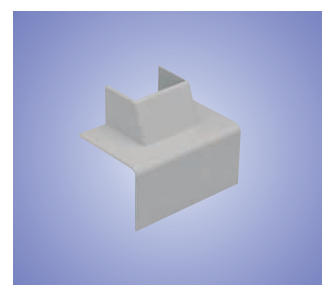
**Angled Mini-Trunking Adaptor**

Prod Code	Size	Pack
EATA404SG	MMT4	1



**Square Mini-Trunking Adaptor**

Prod Code	Size	Pack
ESTA402SG	MMT2	5



**Square Mini-Trunking Adaptor**

Prod Code	Size	Pack
ESTA404SG	MMT4	1

#### Colour Code Suffix

Please replace the last two letters with those detailed below.

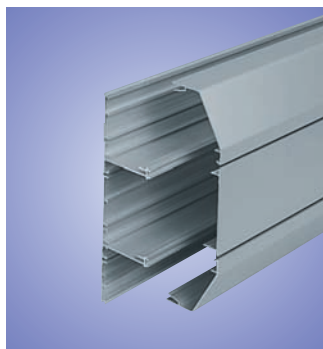
Code	Colour
SG	Silver Grey
WH	White



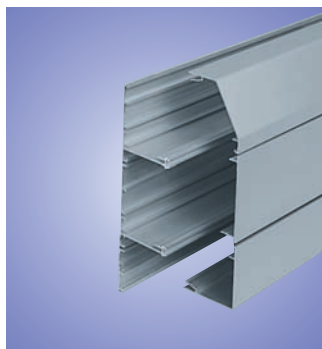
Ceiling Service Unit (configured by the Marshall-Tufflex Specialised Applications Team).

A high capacity, multi-compartment aluminium cable management system with an extendable base for dado and skirting installation particularly suitable for hospital and laboratory installations.

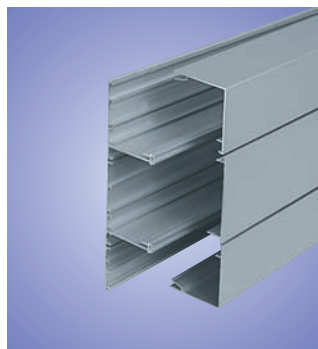
- 220mm x 65mm.
- Additional compartments of 88mm.
- Individual covers for each compartment.
- Fittings and accessories with built-in overlaps.
- A range of polycarbonate clip-on fittings.
- Comprehensive range of flush power and data accessories.
- Fully compatible with Sterling Accessories.
- 63 Amp Sterling Busbar option with internal Busbar cover that extends throughout for safety.
- Silver or white powder-coated as standard.
- Other colours or foils on request.



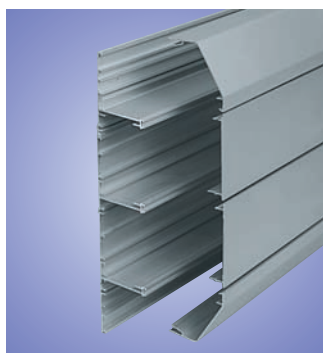
**XL 301**  
Size: 220 x 65mm



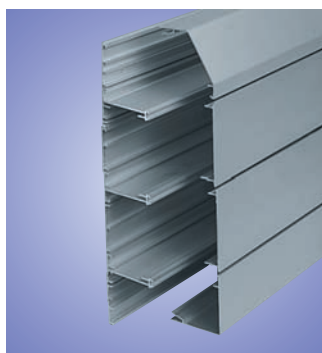
**XL 302**  
Size: 220 x 65mm



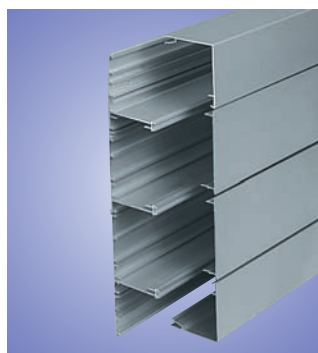
**XL 303**  
Size: 220 x 65mm



**XL 311**  
Size: 308 x 65mm



**XL 312**  
Size: 308 x 65mm



**XL 313**  
Size: 308 x 65mm

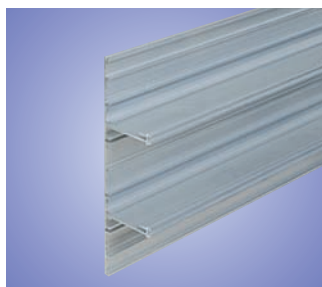


## STERLING XL ALUMINIUM continued

### COMPONENTS

#### ELTB300SG Base Unit

Features earth bonding rail and screw ports to aid the fastening of Busbar industrial accessories, pipe clips and gas valves etc.



#### Base Unit

Prod Code	Pack
ELTB300	1 x 3m

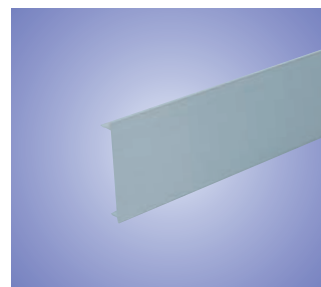
#### ELEB300SG Extendable Base

Gives an additional centre compartment with the same features as the base unit. Allows a maximum of one either side of Base Unit ELTB300.



#### Extendable Base

Prod Code	Pack
ELEB300	1 x 3m

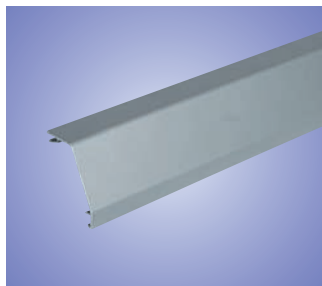


#### Main Compartment Lid

Prod Code	Pack
LTL1SG	1 x 3m

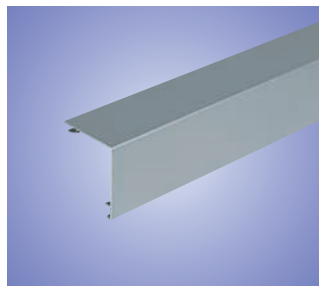
#### LTL1SG Main Compartment Lid

Clips to the centre base unit and can be cut to required length for the installation of accessories and fittings. All profiles feature this lid.



#### ELAC300SG Angled Cover

Clips on to the upper or lower edge of the base unit to provide an angled compartment.



#### Square Cover

Prod Code	Pack
ELSC300SG	1 x 3m

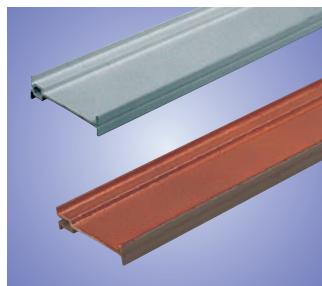
#### ELSC300SG Square Cover

Clips on to the upper or lower edge of the base unit to provide a square compartment.



#### Busbar Support and Assembly

Prod Code	Support	Pack
ELBS200	4 x 3m	
GRA1	Assembly	1 x 3m



#### Dividing Fillet

Prod Code	Pack
ELDF200	8 x 3m
ELDF200CS1	Screened 4 x 3m



#### RCD/MCB Housing

Prod Code	Pack
EAH3SG	2
EAHC3SG with cover (as shown)	1
Up to 4 modules can be accommodated. RCD not supplied by Marshall-Tufflex.	

### BONDING ASSEMBLIES



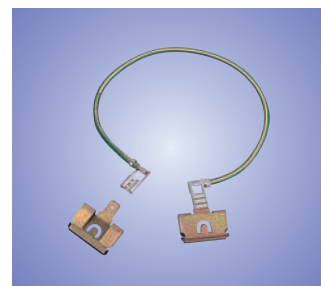
#### Bonding Terminal Assembly

Prod Code	Pack
LBT1	Incoming 16mm <sup>2</sup> 5
LBT2	Base to Base 63 Amp 5



#### Bonding Strap

Prod Code	Pack
LBS1	Base to Base 32 Amp 5



#### Bonding Strap

Prod Code	Pack
LBS2	Cover to Base 5

#### Colour Code Suffix

Please replace the last two letters with those detailed below.

Code	Colour
SG	Silver Grey
WH	White

# STERLING XL ALUMINIUM continued



## STERLING XL ALUMINIUM COMPONENT CHART

		3 Compartment			4 Compartment			Busbar Assembly
		XL 301 220 x 65mm	XL 302 220 x 65mm	XL 303 220 x 65mm	XL 311 308 x 65mm	XL 312 308 x 65mm	XL 313 308 x 65mm	
<b>Base Unit</b> Pack 1 x 3m		ELTB300	ELTB300	ELTB300	ELTB300	ELTB300	ELTB300	GRA1 + ELBS200
<b>Extendable Base</b> Pack 1 x 3m		—	—	—	ELEB300	ELEB300	ELEB300	GRA1 + ELBS200
<b>Main Compartment Lid</b> Pack 1 x 3m		LTL1SG	LTL1SG	LTL1SG	2 x LTL1SG	2 x LTL1SG	2 x LTL1SG	—
<b>Angled Cover</b> Pack 1 x 3m		2 x ELAC300SG	ELAC300SG	—	2 x ELAC300SG	ELAC300SG	—	—
<b>Square Cover</b> Pack 1 x 3m		—	ELSC300SG	2 x ELSC300SG	—	ELSC300SG	2 x ELSC300SG	—
<b>Couplers</b> Pack 5		EC401SG	EC402SG	EC403SG	EC401SG + ELLCC400SG	EC402SG + ELLCC400SG	EC403SG + ELLCC400SG	GTB1
<b>End Caps</b> Pack 5 <small>Left or right hand.</small>		EEC401SG	EEC402LHSG EEC402RHSG	EEC403SG	EEC401SG + ELLEC400SG	EEC402LHSG + ELLEC400SG EEC402RHSG + ELLEC400SG	EEC403SG + ELLEC400SG	GTC1
<b>Internal Bends</b> Pack 5		EIB401SG	EIB402SG	EIB403SG	EIB401SG + ELLIB400SG	EIB402SG + ELLIB400SG	EIB403SG + ELLIB400SG	GCA1
<b>External Bends</b> Pack 5		EXB401SG	EXB402SG	EXB403SG	EXB401SG + ESLEB400SG	EXB402SG + ESLEB400SG	EXB403SG + ESLEB400SG	GCA1
<b>Flat Angles</b> Pack 1 <small>Upward or Downward.</small>		EFA301SG	EFA302USG EFA302DSG	EFA303SG	EFA311SG	EFA312USG EFA312DSG	EFA313SG	GCA1
<b>Flat Tees</b> Pack 1		EFT 301SG	†	EFT303SG	EFT311SG	†	EFT313SG	GCA1

† Contact **Technical Hotline 01424 856688** for advice.

Covers and base are to be bonded to earth potential, refer to BS7671 (Wiring Regulations).



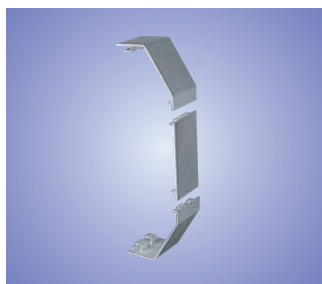
Colour Code Suffix	
Please replace the last two letters with those detailed below.	
Code	Colour
SG	Silver Grey
WH	White





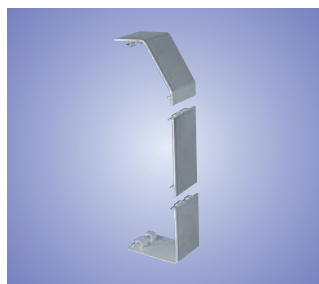
## STERLING XL ALUMINIUM continued

### COUPLERS



#### Coupler – XL 301

Prod Code	Pack
EC401SG	5
For XL 311 add ELLCC400SG	



#### Coupler – XL 302

Prod Code	Pack
EC402SG	5
For XL 312 add ELLCC400SG	



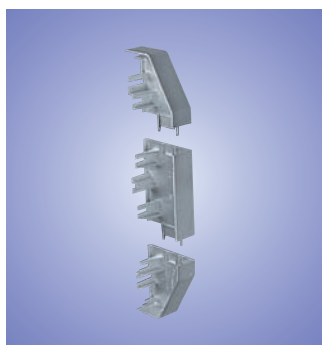
#### Coupler – XL 303

Prod Code	Pack
EC403SG	5
For XL 313 add ELLCC400SG	

### END CAPS

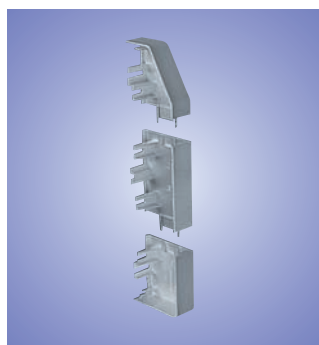


For additional retention use End Cap Retaining Screws G1310 (Pack 40).



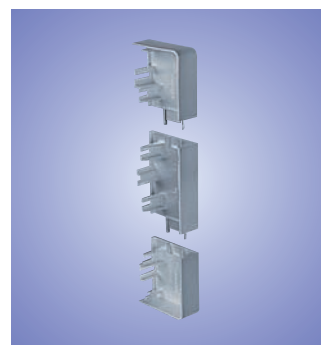
#### End Cap – XL 301

Prod Code	Pack
EEC401SG	5
Universal for both LH & RH	
For XL 311 add ELLEC400SG	



#### End Cap – XL 302

Prod Code	Pack
EEC402LHSG (Left Hand)	5
EEC402RHSG (Right Hand)	5
For XL 312 add ELLEC400SG	



#### End Cap – XL 303

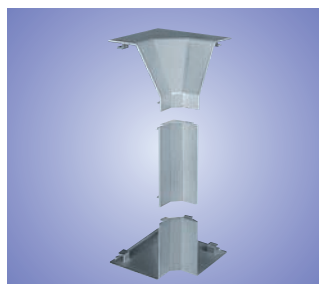
Prod Code	Pack
EEC403SG	5
Universal for both LH & RH	
For XL 313 add ELLEC400SG	

### INTERNAL BENDS



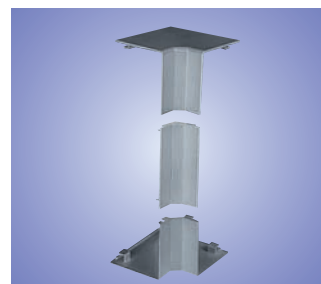
#### Internal Bend – XL 301

Prod Code	Pack
EIB401SG	5
For XL 311 add ELLIB400SG	



#### Internal Bend – XL 302

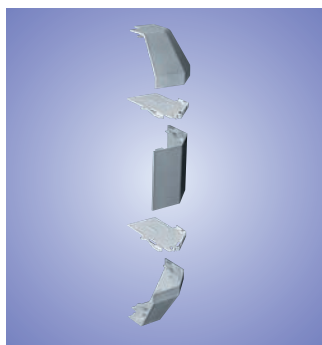
Prod Code	Pack
EIB402SG	5
For XL 312 add ELLIB400SG	



#### Internal Bend – XL 303

Prod Code	Pack
EIB403SG	5
For XL 313 add ELLIB400SG	

### EXTERNAL BENDS



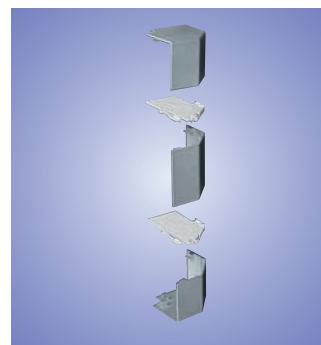
#### External Bend – XL 301

Prod Code	Pack
EXB401SG	5
For XL 311 add ESLEB400SG	



#### External Bend – XL 302

Prod Code	Pack
EXB402SG	5
For XL 312 add ESLEB400SG	



#### External Bend – XL 303

Prod Code	Pack
EXB403SG	5
For XL 313 add ESLEB400SG	

All moulded fittings come with a generous overlap to accommodate slight cutting inaccuracies.



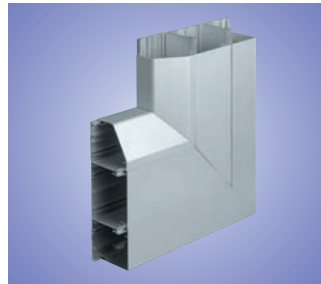
## FABRICATED FITTINGS

STERLING XL  
ALUMINIUM



**Standard Flat Angle – XL 301**

Prod Code	Pack
EFA301SG	1



**Upward Flat Angle – XL 302**

Prod Code	Pack
EFA302USG	1



**Downward Flat Angle – XL 302**

Prod Code	Pack
EFA302DSG	1



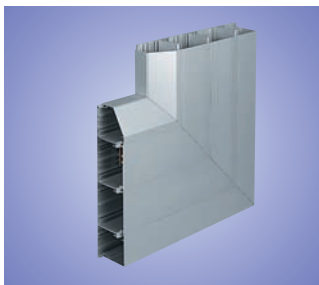
**Standard Flat Angle – XL 303**

Prod Code	Pack
EFA303SG	1



**Standard Flat Angle – XL 311**

Prod Code	Pack
EFA311SG	1



**Upward Flat Angle – XL 312**

Prod Code	Pack
EFA312USG	1



**Downward Flat Angle – XL 312**

Prod Code	Pack
EFA312DSG	1



**Standard Flat Angle – XL 313**

Prod Code	Pack
EFA313SG	1



**Standard Flat Tee – XL 301**

Prod Code	Pack
EFT301SG	1



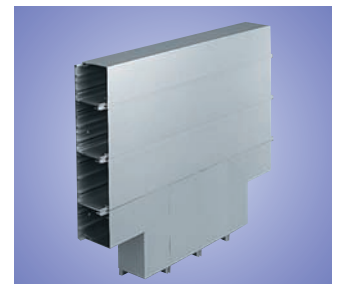
**Standard Flat Tee – XL 303**

Prod Code	Pack
EFT303SG	1



**Standard Flat Tee – XL 311**

Prod Code	Pack
EFT311SG	1



**Standard Flat Tee – XL 313**

Prod Code	Pack
EFT313SG	1

### Colour Code Suffix

Please replace the  
last two letters  
with those  
detailed below.

Code	Colour
SG	Silver Grey
WH	White



# STERLING XL ALUMINIUM continued

## BOXES



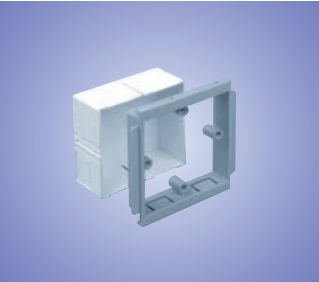
Single Gang Accessory Box		
Prod Code	Depth	Pack
ESSB1SG	30mm	20



Twin Gang Accessory Box		
Prod Code	Depth	Pack
ESSB2SG	30mm	10



Triple Gang Accessory Box		
Prod Code	Depth	Pack
ESSB3SG	30mm	4



Single Gang Adjustable Accessory Box		
Prod Code	Depth	Pack
EAB1SG	32-40mm	10



Twin Gang Adjustable Accessory Box		
Prod Code	Depth	Pack
EAB2SG	32-40mm	5



Single Gang Accessory Plate		Pack
Prod Code		
ESSP1SG		10



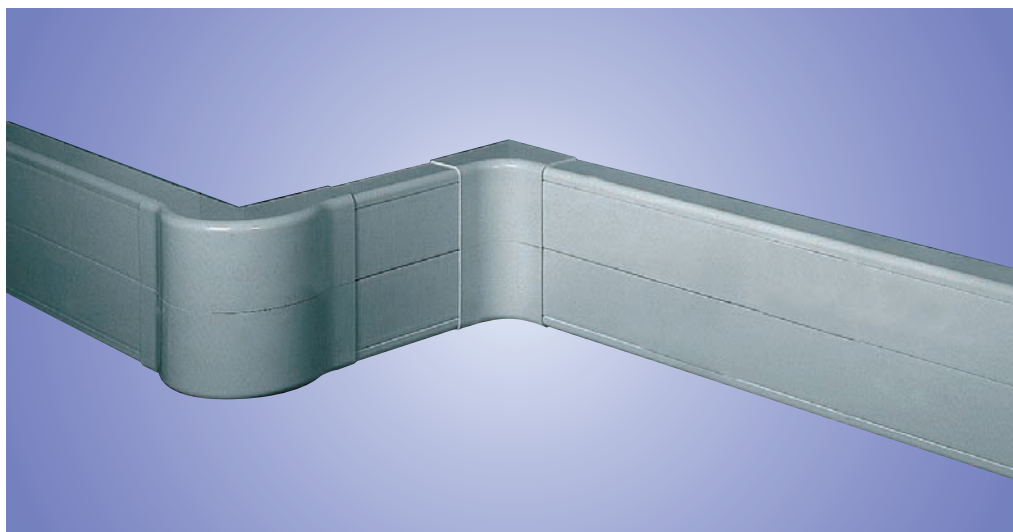
Twin Gang Accessory Plate		Pack
Prod Code		
ESSP2SG		5

Colour Code Suffix	
Please replace the last two letters with those detailed below.	
Code	Colour
SG	Silver Grey
WH	White

**FOR ADDITIONAL ACCESSORIES AND BOXES SEE PAGES 69 TO 75**

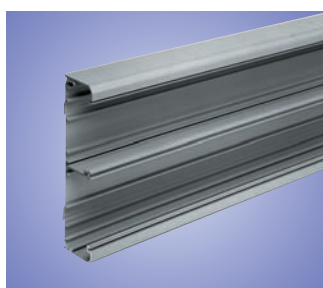


## STERLING TWIN PLUS ALUMINIUM



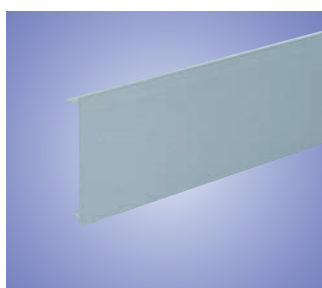
Sterling Twin Plus in Aluminium is a totally integrated cable management solution with a large bend radius option to control cables for optimum performance.

- Bends, angles and tees with a large bend radius of 50mm.
- Cable control performance that exceeds international category standards.
- Busbar option available.
- Utilises the full range of Sterling flush accessories and boxes.
- Available in lengths suited to international specification.



**Base Unit – Aluminium**

Prod Code	Pack
EMTA60SG	1 x 3m



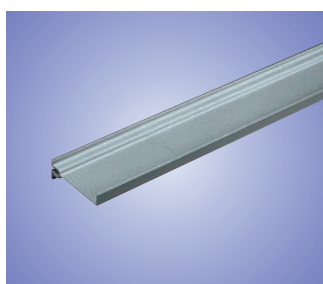
**Main Compartment Lid – Ali.**

Prod Code	Pack
LTL1SG	1 x 3m



**Busbar Support and Assembly**

Prod Code	Support	Pack
EBS60	10 x 3m	
GRA1	Assembly	1 x 3m



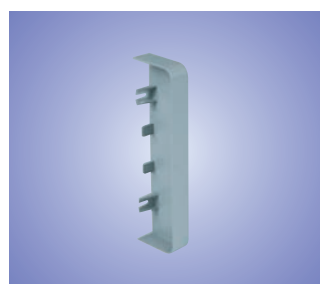
**Dividing Fillet – PVC-U**

Prod Code	Pack
LDF1	8 x 3m



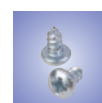
**Coupler**

Prod Code	Pack
EC60WH	1



**End Cap**

Prod Code	Pack
EEC60WH	1



For additional retention use End Cap Retaining Screws G1310 (Pack 40).

**FOR STERLING  
BUSBAR FITTINGS  
SEE PAGES  
64 TO 67**

Colour Code Suffix	
Please replace the last two letters with those detailed below.	
Code	Colour
SG	Silver Grey
WH	White

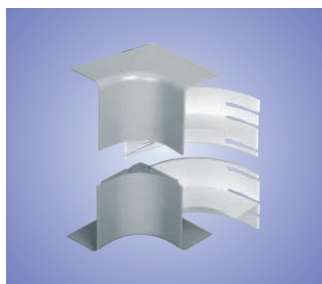




## STERLING TWIN PLUS ALUMINIUM continued

### ASSEMBLIES AND COVERS

Assemblies include Covers, Cable Inserts in ABS.  
Flat Tees include Covers, Cable Inserts in ABS with Base in Aluminium.  
Covers Only in ABS.



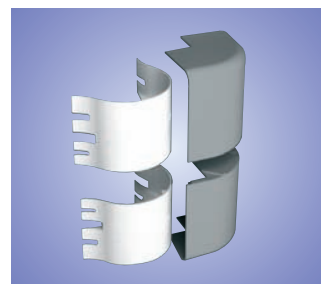
#### Internal Bend Assembly

Prod Code	Pack
EIB60SG	1



#### Data External Bend Assembly

Prod Code	Pack
EXB60SG	1



#### Standard External Bend Assembly

Prod Code	Pack
ESXB60SG	1

Capacity reduced by 50%.



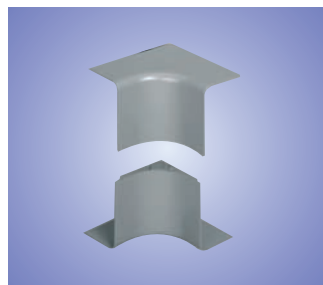
#### Flat Angle Assembly

Prod Code	Pack
EFA60SG	1



#### Flat Tee Assembly

Prod Code	Pack
EFTA60SG	1



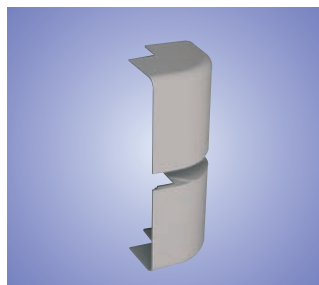
#### Internal Bend Cover

Prod Code	Pack
EIBC60SG	1



#### Data External Bend Cover

Prod Code	Pack
EXBC60SG	1



#### Standard External Bend Cover

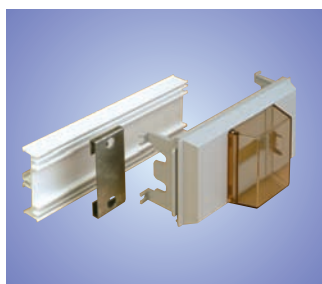
Prod Code	Pack
ESXBC60SG	1



#### Flat Bend Cover

Prod Code	Pack
EFAC60SG	1

### ADDITIONAL COMPONENTS



#### RCD/MCB Housing

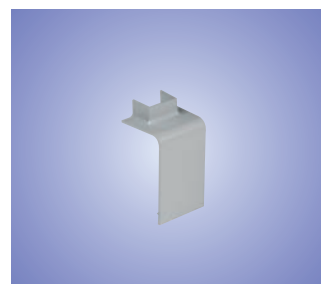
Prod Code	Size	Pack
EAHC60SG	1-4 modules	2

RCD not supplied by Marshall-Tufflex



#### Mini Trunking Adaptor

Prod Code	Size	Pack
EATA62SG	MMT2	1



#### Mini Trunking Adaptor

Prod Code	Size	Pack
EATA64SG	MMT4	1

Other Angles available on request, telephone 01424 856688.



#### Colour Code Suffix

Please replace the last two letters with those detailed below.

Code	Colour
SG	Silver Grey
WH	White



## STERLING TWIN PLUS ACCESSORY BOXES



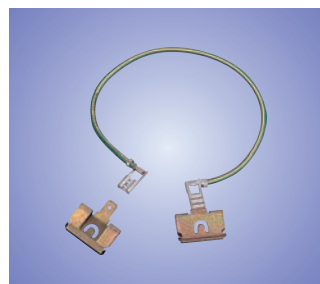
### Bonding Terminal Assembly

Prod Code		Pack
LBT1	Incoming 16mm <sup>2</sup>	5
LBT2	Base to Base 63 Amp	5



### Bonding Strap

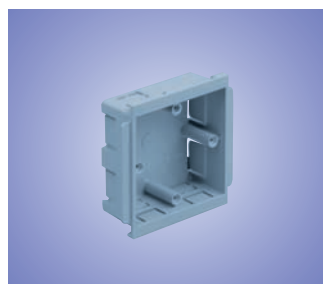
Prod Code		Pack
LBS1	Base to Base 32 Amp	5



### Bonding Strap

Prod Code		Pack
LBS2	Cover to Base	5

## BONDING ASSEMBLIES



### Single Gang Accessory Box

Prod Code	Depth	Pack
ESSB1SG	30mm	20



### Twin Gang Accessory Box

Prod Code	Depth	Pack
ESSB2SG	30mm	10



### Triple Gang Accessory Box

Prod Code	Depth	Pack
ESSB3SG	30mm	4

## BOXES



### Single Gang Adjustable Accessory Box

Prod Code	Depth	Pack
EAB1SG	32-40mm	10



### Twin Gang Adjustable Accessory Box

Prod Code	Depth	Pack
EAB2SG	32-40mm	5



### Single Gang Accessory Plate

Prod Code		Pack
ESSP1SG		10



### Twin Gang Accessory Plate

Prod Code		Pack
ESSP2SG		5

**FOR ADDITIONAL  
ACCESSORIES AND  
BOXES SEE  
PAGES 69 TO 75**

### Colour Code Suffix

Please replace the  
last two letters  
with those  
detailed below.

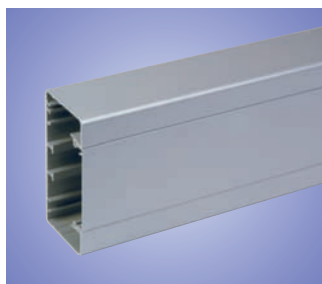
Code	Colour
SG	Silver Grey
WH	White



## SERIES R ALUMINIUM

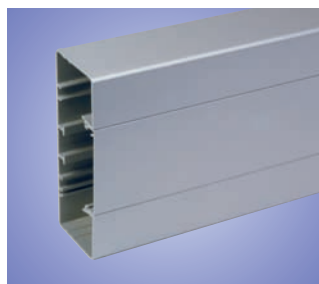
The Series R is an attractive 65mm deep aluminium trunking system suitable for large quantities of cable.

- Available in two heights – 130mm and 170mm.
- Single lid.
- Extra deep accessory boxes.
- Segregation available into four compartments.



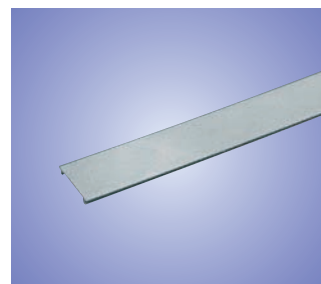
**Trunking 130**

Prod Code	Size	Pack
RTBDA130SG	130 x 65mm	1 x 3m



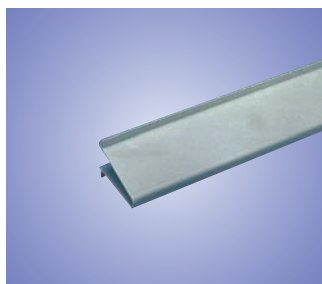
**Trunking 170**

Prod Code	Size	Pack
RTBDA170SG	170 x 65mm	1 x 3m



**Segregator**

Prod Code	Pack
RDF1	10 x 3m



**Dividing Fillet (Centre)**

Prod Code	Pack
RDF2	1 x 3m



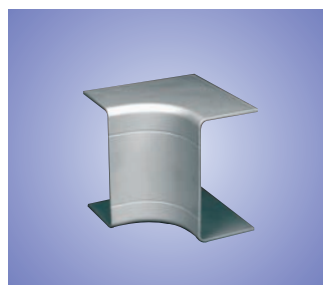
**Coupler**

Prod Code	Size	Pack
RCP4130SG	130 x 65mm	5
RCP4170SG	170 x 65mm	5



**End Cap**

Prod Code	Size	Pack
RECPD4130SG	130 x 65mm	12
RECPD4170SG	170 x 65mm	5



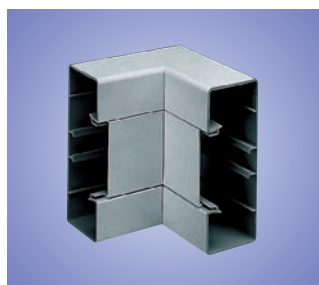
**Internal Bend - Moulded**

Prod Code	Size	Pack
RIB130SG	130 x 65mm	5



**External Bend - Moulded**

Prod Code	Size	Pack
REB130SG	130 x 65mm	5



**Internal Bend - Fabricated**

Prod Code	Size	Pack
RTBDA170SG	170 x 65mm	1

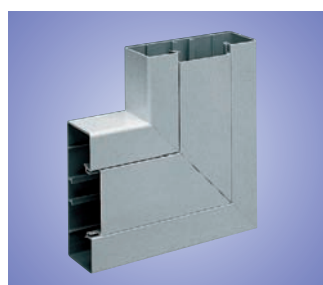
Couplers required.



**External Bend - Fabricated**

Prod Code	Size	Pack
REBDA170SG	170 x 65mm	1

Couplers required.



**Flat Angle - Fabricated**

Prod Code	Size	Pack
RFADA130SG	130 x 65mm	1
RFADA170SG	170 x 65mm	1

Couplers required.



**Flat Tee - Fabricated**

Prod Code	Size	Pack
RFTDA130SG	130 x 65mm	1
RFTDA170SG	170 x 65mm	1

Couplers required.



**Single Gang Accessory Box**

Prod Code	Depth	Pack
RSSB1GB52	40mm	10



**Twin Gang Accessory Box**

Prod Code	Depth	Pack
RSSB2GB52	40mm	10

**Single Gang Schuko Accessory Box**

Prod Code	Depth	Pack
RSSB1D52	40mm	10



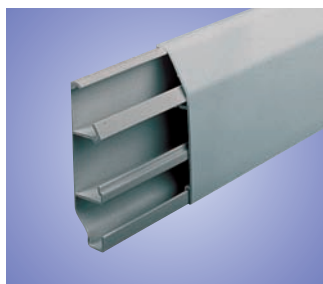
**Colour Code  
Suffix**

Please replace the last two letters with those detailed below.

Code	Colour
SG	Silver Grey
WH	White

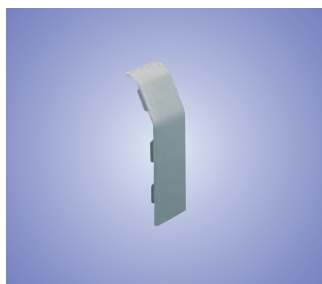


## SOVEREIGN PLUS ALUMINIUM SKIRTING



### Skirting Trunking

Prod Code	Size	Pack
JEA03SG	75 x 20mm	1 x 3m



### Coupler

Prod Code	Pack
JM422SG	10



### End Cap

Prod Code	Pack
JM421SG (Left Hand)	2
JM420SG (Right Hand )	2

Sovereign Plus, is a smaller aluminium trunking system suitable for installation into hotels, small offices and houses.

- 75 x 20mm.
- Overlapping fittings.
- A smooth, one-piece cover provides a smart, easy-to-clean surface.
- Accessories mounted on plinth.
- Accessory Boxes are designed to accept both square and radiused corner accessories.



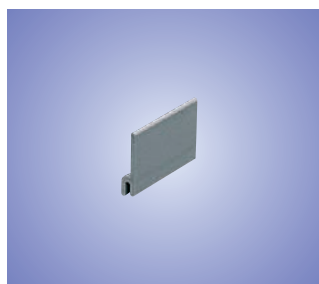
### Internal Corner

Prod Code	Pack
JM423SG	5



### External Corner

Prod Code	Pack
JM424SG	5



### Cable Retainer

Prod Code	Pack
JM28	100



### MMT2 Adaptor (In line)

Prod Code	Size	Pack
JM425SG	25 x 16mm	2



### MMT3 Adaptor Stop End

Prod Code	Size	Pack
JM426SG (Right Hand - shown)	38 x 16mm	2
JM427SG (Left Hand)	38 x 16mm	2



### Single Gang Accessory Box

Prod Code	Depth	Pack
JM441SG	32mm	5



### Twin Gang Accessory Box

Prod Code	Depth	Pack
JM442SG	32mm	3

#### Colour Code Suffix

Please replace the last two letters with those detailed below.

Code	Colour
SG	Silver Grey
WH	White



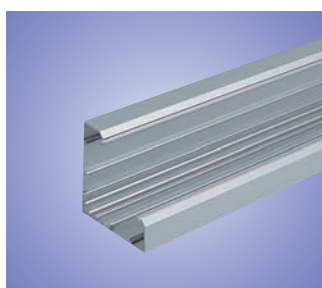


## BENCH TRUNKING ALUMINIUM

Aluminium Bench Trunking is adaptable, sturdy and easy to install – when fitted with dividing fillets it provides the ideal answer for bringing segregated services to any desk or bench top working environment.

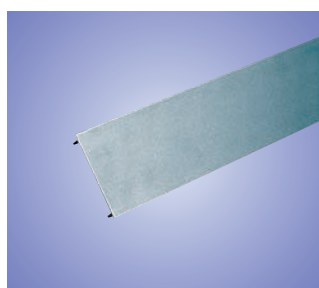
- Compatible with the Sterling range of accessories, including the data modular socket.
- Standard Sterling front plates mean a super-smooth appearance.
- With a Double End Cap back to back configuration is easy.
- Positive fixing lids mean ease of installation and allow cabling to be reconfigured at any time.

Available in silver or white powder coated finish.



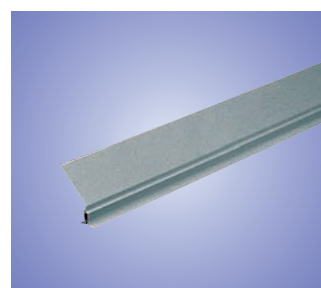
### Trunking Base

Prod Code	Size	Pack
MBTAB105SG	105 x 105mm	1 x 3m



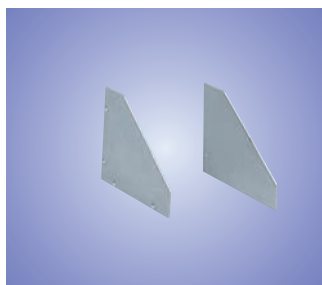
### Lid

Prod Code	Pack
MBTAL105SG	1 x 3m



### Dividing Fillet PVC-U

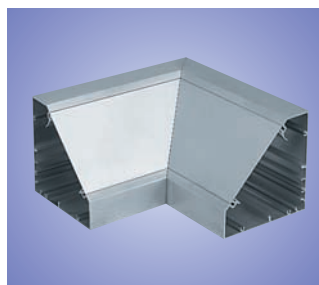
Prod Code	Pack
BDF105	4 x 3m
BDF105CS1	Screened 1 x 3m



### End Caps

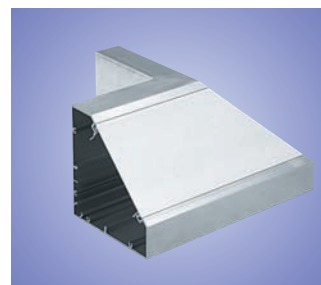
Prod Code	Size	Pack
BECA105SG	Steel	2

With fixing screws.



### Internal Angle

Prod Code	Pack
BIAA105SG	Aluminium 1



### External Angle

Prod Code	Pack
BEAA105SG	Aluminium 1

## ALUMINIUM BENCH UNITS

- Bench units are available in single socket, twin socket, or single plus twin configurations. Other options are also available.



### Bench Unit 1 Gang

Prod Code	Pack
MBUA1SG	1
MBSA1SG	ESS1SG socket 1



### Bench Unit 2 Gang

Prod Code	Pack
MBUA2SG	1
MBSA2SG	ESS2SG socket 1



### Bench Unit 1 + 2 Gang

Prod Code	Pack
MBUA3SG	1

### Colour Code Suffix

Please replace the last two letters with those detailed below.

Code	Colour
SG	Silver Grey
WH	White

**OTHER OPTIONS AND CONFIGURATIONS AVAILABLE.  
TELEPHONE 01424 856688 FOR INFORMATION.**



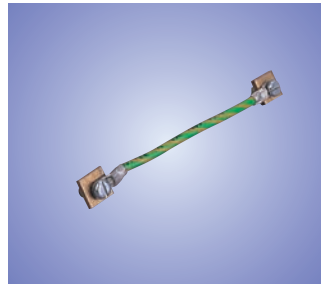
## BENCH TRUNKING ALUMINIUM continued

### BONDING ASSEMBLIES FOR ALUMINIUM



#### Bonding Terminal Assembly

Prod Code	Pack
LBT1 Incoming 16mm <sup>2</sup>	5



#### Base Bonding Strap

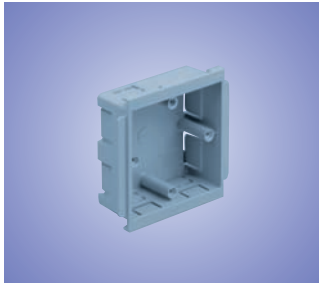
Prod Code	Pack
LBS1 32 Amp	5



#### Cover Bonding Strap

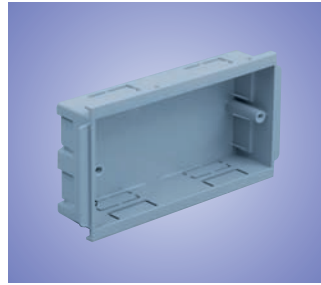
Prod Code	Pack
LBS2 Cover to Base	5

### BOXES



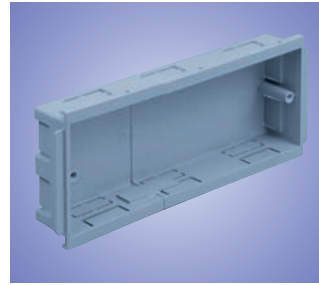
#### Single Gang Accessory Box

Prod Code	Depth	Pack
ESSB1SG	30mm	20



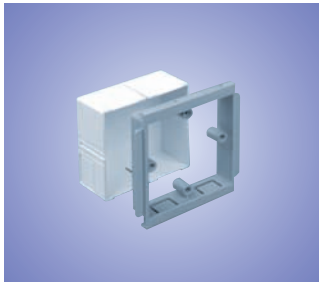
#### Twin Gang Accessory Box

Prod Code	Depth	Pack
ESSB2SG	30mm	10



#### Triple Gang Accessory Box

Prod Code	Depth	Pack
ESSB3SG	30mm	4



#### Single Gang Adjustable Accessory Box

Prod Code	Depth	Pack
EAB1SG	32–40mm	10



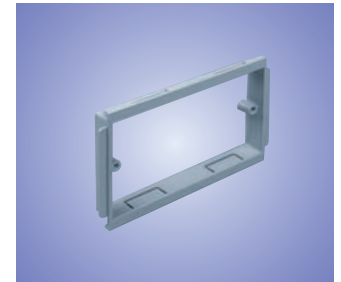
#### Twin Gang Adjustable Accessory Box

Prod Code	Depth	Pack
EAB2SG	32–40mm	5



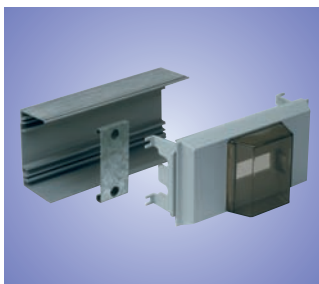
#### Single Gang Accessory Plate

Prod Code	Pack
ESSP1SG	10



#### Twin Gang Accessory Plate

Prod Code	Pack
ESSP2SG	5



#### Bench Unit RCD/MCB Housing Installation Assembly

Prod Code	Pack
BAH1SG	1
BAHC1SG with cover (as shown)	1

RCD not supplied by Marshall-Tufflex.

**FOR ADDITIONAL  
ACCESSORIES AND  
BOXES SEE  
PAGES 69 TO 75**

#### Colour Code Suffix

Please replace the  
last two letters  
with those  
detailed below.

Code	Colour
SG	Silver Grey
WH	White

## STERLING ALUMINIUM RANGE

### ELEGANCE/STERLING PROFILE/STERLING XL/TWIN PLUS

Sterling aluminium cable management systems from Marshall-Tufflex is manufactured from high precision extruded aluminium with an optional Busbar System. Each compartment has its own cover and fittings for safe and easy access of each compartment excluding Elegance. A full range of bonding straps and connectors are available.

#### POSITIONING

When used in a skirting application the lower web should be drilled with a clearance hole to enable cables to pass through to the accessory boxes in the centre compartment before installation. The base unit should be mounted (5mm + floor covering) above the floor slab to enable cover and fitting to be installed.

#### INSTALLATION

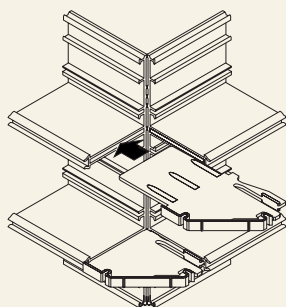
Secure the trunking base every 750mm with no.8 round head screws, utilising the grooves in the outer compartment of the base to facilitate the drilling of 6mm clearance holes. Use a fine tooth blade (32/36tpi) or preferably a circular saw with a 350mm diameter fine tungsten tipped blade (96/108tpi) for cutting the aluminium trunking. This will produce an edge requiring minimal deburring.

#### MOULDED JOINTS AND BENDS (excluding Sterling XL/Twin Plus External Bends – see below)

Consecutive lengths of base are butt jointed together. At corners the trunking base must be mitred to ensure total enclosure of the trunking, including any internal segregator fitted. The cutting is not critical as the fittings cover the joint and overlap the trunking lid to a maximum of 10mm thus covering any inaccuracies. See also Earthing.

#### XL/TWIN PLUS EXTERNAL BENDS

The base should be cut square at the corner and an internal segregator inserted into the web. This gives additional security to the clip-on bend. On Twin Plus cable control inserts slide into base.



#### SINGLE LENGTHS

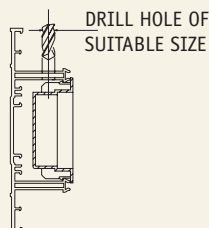
Where it is required to fit a single length of trunking between two inside walls (under 3 metres) it is advisable to place an additional coupler set in the centre of the trunking run to facilitate the removal of the covers.

#### ELEGANCE ACCESSORY BOXES

Remove the appropriate KO or drill the box and feed the cables into the box and clip into the desired location. All Flush Accessories must have front fixing screws visible to enable removal of the cover.

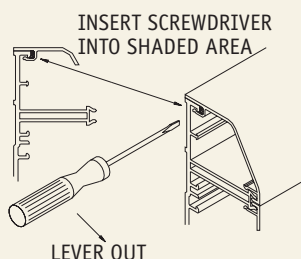
#### STERLING PROFILE/STERLING XL/TWIN PLUS ACCESSORY BOXES

These are installed by clipping the box into the centre compartment in place of the LTL1 cover. When being fed from the adjacent compartment drill a suitable size hole in the web and box if no suitable knock out is available. Install a bush or grommet to protect the cable when passing through the aluminium web.



#### COVER REMOVAL

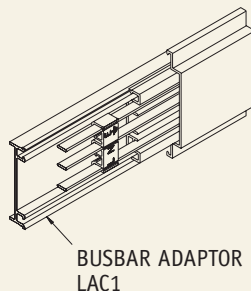
The covers have been designed to remain captive irrespective of impact during normal conditions and minor undulations to the base and to limit unauthorised removal. To remove the covers first detach a coupler, internal or external bend to gain access, care being taken to avoid any damage to the cover surface finish. The angle and square cover are eased from the base by inserting a small screwdriver between the base and the cover clip then lever out. All covers are then gently eased off the base taking care to avoid any damage. Main covers (LTL1) are removed by release of the accessory or fitting and eased from the base, care being taken to avoid damage to the cover.



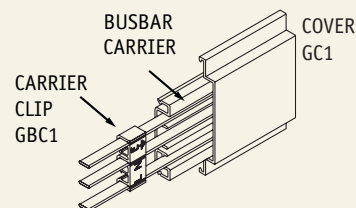
#### BUSBAR ASSEMBLY (GRA1) ELEGANCE

Upgrades the trunking to a 63Amp Busbar distribution system. Comprises: carrier support, carrier clip, Busbar rails, protective cover, cover screws. Requires Busbar Adaptor (LAC1) to position Busbar Assembly within the trunking base (see page 213).

*For Busbar fittings, accessories and installation please refer to relevant sections.*

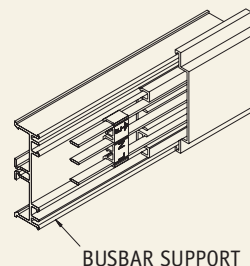


#### STERLING PROFILE



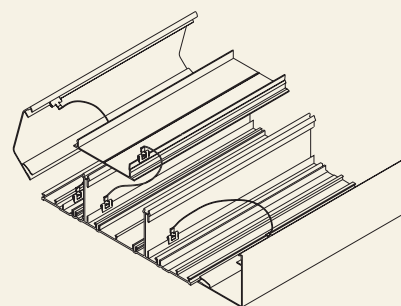
#### STERLING XL/TWIN PLUS

Requires Busbar Support to position Busbar Assembly within the trunking base.



#### EARTHING.

Covers, base and metallic fittings are to be cleaned of protective coating and earth bonded. Incoming earth connectors are made using the LBT1 bonding assembly installed in the earth channel of the base. For circuits protected by a device greater than 32A, the connector LBT2 is required to bond two lengths of base together. In final ring or radial 32A circuits the bonding strap LBS1 may be used in the earth channel for bonding lengths of trunking. Covers and metallic fittings should be bonded using the bonding strap LBS2 onto the earth upstand.



#### Bonding Terminal (LBT1)

Terminating the incoming earth to the trunking base. Cable capacity 16mm<sup>2</sup>.

#### Bonding Connector (LBT2)

Base earth continuity link for 63A Busbar.

#### Bonding Strap (LBS1) 4.0mm<sup>2</sup>

Base earth continuity strap for 32A system.

#### Bonding Strap (LBS2) 1.5mm<sup>2</sup>

Base to cover/end cap earth continuity link.

#### DIMENSIONAL REFERENCE TO HORIZONTAL OFFSETS AND FABRICATED FITTINGS

See Sterling PVC-U Trunking page 211.

The installation should be in accordance with the latest edition of BS 7671:2001 Wiring Regulations.