

ALUMINIUM TRUNKING SYSTEMS

Aluminium cable containment is an excellent choice of material for office areas that need a stylish but mechanically robust trunking and for industrial, workshop and laboratory installation, particularly where a high quality of screening performance is required.

ALUMINIUM TRUNKING SYSTEMS

ALUMINIUM TRUNKING SYSTEMS

The physical properties of aluminium offer the building industry a high quality material that is very suitable for internal cable management distribution. Aluminium is light to handle with high mechanical strength and impact-resistance. Extruded sections provide attractive profiles and products are finished with a high quality, powder-coat that provides a blemish-resistant surface.

Aluminium perimeter trunking systems provide the specifier, contractor and end-user with elegant, stream-lined containment that offers the practical advantages of inherent LSOH (low smoke zero halogen) and screening properties. Aluminium is an excellent choice for office and educational areas requiring a stylish yet robust trunking system, particularly effective where a high quality of screening performance and security is required.

Marshall-Tufflex offer a wide range of multi-compartment aluminium trunking in different heights, designs, cable capacities and numbers of compartments so whatever the requirements, there will always be a perfect solution with Marshall-Tufflex.

Choose the UK's number one in cable management.

Standard colour

The standard colour for each Marshall-Tufflex range is shown within each relevant product information section, although silver grey 9006 is our most popular colour option in aluminium trunking.

The below table identifies the relevant RAL colour reference for all our standard colour options, dependent on product range. However we would be happy to quote for any other colour requirements, please see the Special colours section.

Standard Colours	
WH	SG
WH: White	SG: Silver Grey

Material	Standard colour	Colour code suffix	RAL
Aluminium	Silver Grey White	SG WH	9006 9016

Please note: it is dependent on the product range as to which colour is available as standard.

Special colours

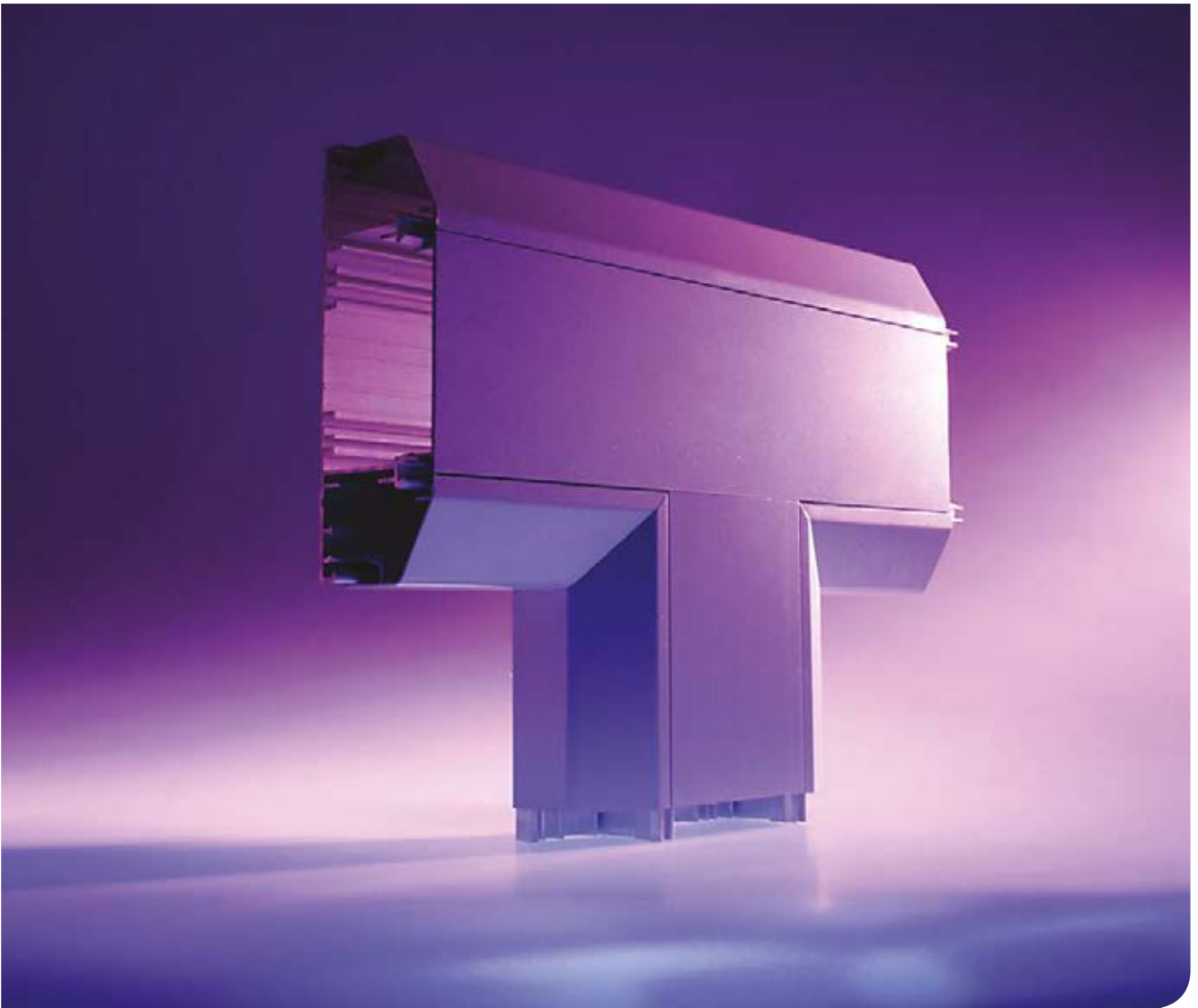
To help enhance the style of an installation, different variations of solid colour are sometimes required.

We can provide special colours in a painted solution dependent on your client's preference. All special colour requirements will need to be specified as a RAL colour.

These colours are made to order and therefore are subject to set up charges and a longer lead time. For more information and a quotation contact our Technical Team on +44 (0)1424 856688.

Please note: due to different processes and materials utilised, it may not always be possible to obtain an exact colour match between the extruded and moulded product.





Environmental

- Aluminium is naturally found combined in over 270 different minerals, the chief source of which is bauxite ore.
- Its light weight means less strain on supporting structures, easier handling and reduced transport costs.



Recycling and sustainability

- 100% recyclable material.
- Can be recycled many times without loss of quality.
- Recycling facilities are well established.



EMI protection

- First class EMI screening performance especially at higher frequencies.



Fire performance

- Aluminium systems specified with polycarbonate fittings meet accepted requirements for LSOH.
- Withstands high temperatures with a melting point of 655°C (1211°F).
- Polycarbonate fittings are fire rated to UL94V0.

All aluminium systems are available with standard powder coat finishes in white RAL 9016 or silver-grey RAL 9006*. For other finishes, please call our Technical Team on +44 (0)1424 856688.

Sterling Profile 3001**167 x 50mm**

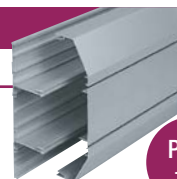
Dado trunking with three separate compartments and individual covers for each compartment.



Page
184

XL301**220 x 65mm**

Dado trunking with three deep compartments.



Page
188

Sterling Profile 3002**167 x 50mm**

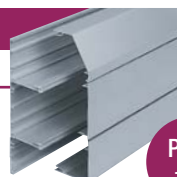
Skirting trunking with three separate compartments and individual covers for each compartment.



Page
184

XL302**220 x 65mm**

Skirting trunking with three deep compartments



Page
188

Sterling Profile 3003**167 x 50mm**

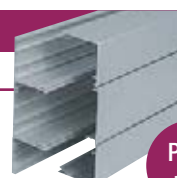
Dado and skirting trunking with three separate compartments and individual covers for each compartment.



Page
184

XL303**220 x 65mm**

Dado and skirting trunking with three deep compartments



Page
188

Elegance 110**110 x 55mm**

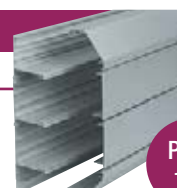
Dado and skirting trunking with a single cover.



Page
180

XL311**308 x 65mm**

Dado trunking with four deep compartments.



Page
192

Elegance 170**170 x 55mm**

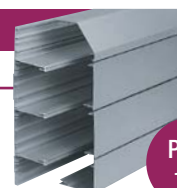
Dado and skirting trunking with a single cover.



Page
182

XL312**308 x 65mm**

Skirting trunking with four deep compartments.



Page
192

Twin Plus**210 x 57mm**

Large capacity dado and skirting trunking with two deep compartments with in-built segregation of power and data.



Page
196

XL313**308 x 65mm**

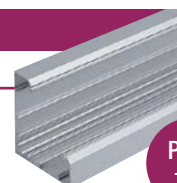
Dado and skirting trunking with four deep compartments.



Page
192

Bench trunking**105 x 105mm**

Desk and laboratory trunking.



Page
199

Note: you may use the rule on the left of this page to check profile sizes.

MT32 PREFABRICATED AND MODULAR WIRING SYSTEMS

MT32 prefabricated and modular wiring systems are designed to take all the hard work out of electrical installations by providing the complete pre-wired, pre-tested, plug and play electrical wiring system.

The system provides fast, safe, labour and cost saving installations that comply with BS 8488:2009+A1:2010 for prefabricated wiring systems intended for permanent connection in fixed installation.

The range of pre-wired, pre-tested and assembled interconnecting leads and accessory modules incorporate the Marshall-Tufflex compact 32Amp connector.

Product information

- 32Amp rated system
- Available as LS0H 3 core 2.5mm² flex system specification that meets the requirement for high integrity earthing
- Suitable for ring and radial circuits
- Circuit testing only required on completion of final layout
- Reduced installation time – no cutting required on site
- Reduced health & safety risk



Female shielded connection

Male shielded connection

Complete pre-wired through accessory assembly incorporating MT32 trunking back box

Pre-wired accessories



Extension cable 2.5mm²

code	length	pack
AA3330	0.5m	1
AA3332	1.5m	1
AA3333	3.0m	1
AA3335	5.0m	1



Connection cable free end 2.5mm²

code	length	pack
AA3732 (male)	1.5m	1
AA3532 (female)	1.5m	1



Male and female adaptors 2.5mm²

code	length	pack
AA7211 (male)	220mm	1
AA7212 (female)	220mm	1

For adapting distribution board to modular system
Note: to fit 20mm knockout

MT32 Connectors

The description 'male' (white) and 'female' (black) does not refer to the connector pins but describes and identifies the moulded connector housings.

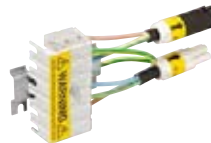
For further information please contact our Technical Team on +44 (0)1424 856688.



Adaptor cables 2.5mm²

code	length	pack
AA8901 (male/male)	0.5m	1
AA8902 (female/female)	0.5m	1

Required for ring circuit



Terminal block 2.5mm²

code	size	pack
AA6510 (female/male)	2.5mm ²	1



Pre-wired accessory 2.5mm²

code	size	pack
AA6221	2 gang	1

p258

Technical Information

Elegance 110 aluminium is a small, rectangular, dado trunking system with a single cover. It is particularly useful for workshop or laboratory supply or in a commercial environment where extra mechanical strength is necessary.



Product information

- 110 x 55mm
- Compliant up to Cat 7a
- Can be subdivided into 2 or 3 compartments
- Suitable for dado and skirting applications
- Fully compatible with Marshall-Tufflex flush power and data accessories and standard UK wiring power and accessories
- Data compliant 25mm and 50mm bend radius

Standard Colours	
WH	SG
WH: White	SG: Silver Grey

Colour code suffix: to indicate the finish you require, add the required colour code to the end of the product code.

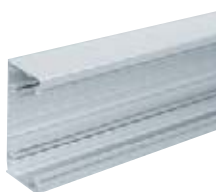
Colour options: Optional colours and finishes are available but these are subject to minimum quantity orders and longer lead times. For more information contact the Technical Team on +44 (0)1424 856688.



Can be divided into 2 or 3 compartments

Part M

For 1 and 2 gang box assemblies with coloured flush plates to comply with Part M please refer to page 104.



Base unit

code	pack
LTB2SG	1



Main compartment cover

code	pack
LTL1SG	1



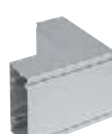
End caps (screws included)

code	pack
LECPSSG	1



Internal bend

code	pack
LIBPSSG	1



External bend

code	pack
LXBPSSG	1



Flat angle

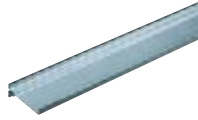
code	pack
LFASSG	1



Flat tee

code	pack
LFTSSG	1

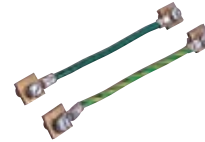
Components

**Dividing fillet**

code	description	pack
LDF1	unscreened	8 x 3m

**Earth bonding kit**

code	description	pack
LBT3		1

**Bonding strap**

code	description	pack
LBS1	base to base 32Amp	5

**Bonding strap**

code	description	pack
LBS2	cover to base	5

Coupler pin

code	description	pack
LDP1	ø2.0 x 20mm	10

To aid alignment of base profiles

**Bonding strap**

code	description	pack
LBS5	end cap to base	1

Boxes and plates

**RCD/MCB housing**

code	description	pack
EAHC1MWH	PVC-U	1

*Up to 4 modules can be accommodated

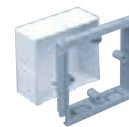
Note: RCDs and MCBs are not supplied by Marshall-Tufflex

**1 gang accessory box 30mm deep (polycarbonate)**

code	description	pack
ESSB1SG		1
ESSBA1WH		1

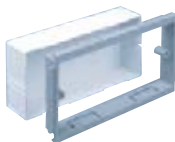
**2 gang accessory box 30mm deep (polycarbonate)**

code	description	pack
ESSB2SG		1
ESSBA2WH		1

**1 gang adjustable depth box**

code	depth	pack
EAB1SG	32-40mm	1

Fully adjustable to 47mm. Please see page 311 for more information.

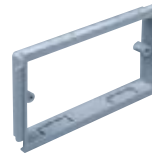
**2 gang adjustable depth box**

code	depth	pack
EAB2SG	32 - 40mm	1

Fully adjustable to 47mm. Please see page 311 for more information.

**1 gang accessory plate**

code	description	pack
ESSP1SG		2

**2 gang accessory plate**

code	description	pack
ESSP2SG		2

Screened boxes

Screening

Conductive spray (CS) is unique to Marshall-Tufflex and is applied in the factory to assist with screening from electromagnetic interference to data and communications cabling within trunking systems. The coating is applied to a range of data boxes, covers, clip-on components and fabricated fittings.

WARNING: A CS coating is not suitable for low voltage circuits.

**1 gang screened accessory box**

code	depth	description	pack
ESSB1SWH*	30mm	PVC-U	20

2 gang screened accessory box

code	depth	description	pack
ESSB2SWH*	30mm	PVC-U	10

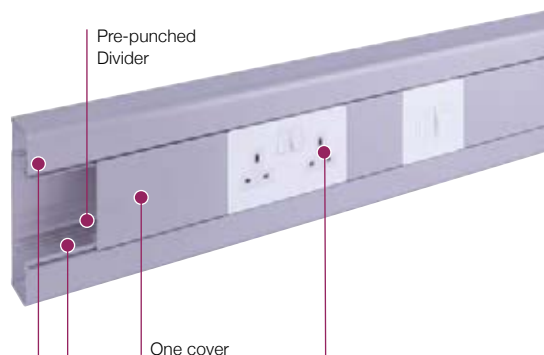
*Supplied complete with earth terminal

Elegance 170 aluminium is a sleek and rounded 170mm rectangular dado trunking system with a single cover, ideal for use in office or educational environments where extra mechanical strength and a higher cable capacity is required.



Product information

- 170 x 55mm
- Compliant up to Cat 7a
- "C" type section can be used as a single large compartment section or can be further subdivided into 2 or 3 compartments
- Suitable for dado and skirting applications
- Plain or pre-punched dividers for quick installation
- A range of fabricated fittings
- Part M compliant
- Data compliant 25mm and 50mm bend radius
- Compatible with Marshall-Tufflex flush power and data accessories and standard UK wiring power and accessories
- Standard silver-grey RAL 9006 powder coat finish.
- Can be used in conjunction with Conduit and Mini trunking systems



Part M

For 1 and 2 gang box assemblies with coloured flush plates to comply with Part M please refer to page 104.



Standard Colours

SG

SG: Silver Grey

Colour options: Optional colours and finishes are available but these will be subject to minimum quantity orders, longer lead times and set up charges. For more information contact the Technical Team on +44 (0)1424 856688.



Base unit and cover

code	pack
LP1050SG	1 x 2.9m

Note: In order to subdivide Elegance 170 dividing fillets should be used

Basic components

Fittings



End cap (screws included)	
code	pack
LP1030SG	1



Internal bend 90°	
code	pack
LP1020SG	1



External bend 90° slow	
code	pack
LP1026SG	1



Flat angle	
code	pack
LP1040SG	1



Flat tee	
code	pack
LP1045SG	1

p297

Technical Information

Components



Galvanised steel dividing fillet (pre-punched)

code	length	pack
LP1005	1.45m	1



Plastic dividing fillet (un-punched)

code	length	pack
LP1006	1.45m	1



Earth bonding kit

code	pack
LBT3	1

Note: Fastons supplied suit 1.5mm to 2.5mm cable (blue) and 4.0mm to 6.0mm (yellow).



Bonding strap

code	description	pack
ESBS1	base to base	5



Bonding strap

code	description	pack
LBS2	cover to base	5



Bonding strap

code	description	pack
LBS5	end cap to base	1

Coupler pin

code	description	pack
LDP1	ø2.0 x 20mm	10

To aid alignment of base profiles

Boxes and plates



RCD/MCB housing

code	description	pack
EAHC1MWH	PVC-U	1

*Up to 4 modules can be accommodated

Note: RCDs and MCBs are not supplied by Marshall-Tufflex



1 gang accessory box 30mm deep (polycarbonate)

code	pack
ESSB1SG	1
ESSBA1WH	1



2 gang accessory box 30mm deep (polycarbonate)

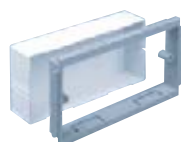
code	pack
ESSB2SG	1
ESSBA2WH	1



1 gang adjustable depth box

code	depth	pack
EAB1SG	32-40mm	1

Fully adjustable to 47mm. Please see page 311 for more information.



2 gang adjustable depth box

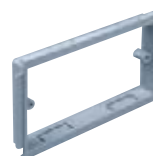
code	depth	pack
EAB2SG	32 - 40mm	1

Fully adjustable to 47mm. Please see page 311 for more information.



1 gang accessory plate

code	pack
ESSP1SG	2



2 gang accessory plate

code	pack
ESSP2SG	2

Screened boxes

Screening

Conductive spray (CS) is unique to Marshall-Tufflex and is applied in the factory to assist with screening from electromagnetic interference to data and communications cabling within trunking systems. The coating is applied to a range of data boxes, covers, clip-on components and fabricated fittings.

WARNING: A CS coating is not suitable for low voltage circuits.



1 gang screened accessory box

code	depth	description	pack
ESSB1SWH*	30mm	PVC-U	20

2 gang screened accessory box

code	depth	description	pack
ESSB2SWH*	30mm	PVC-U	10

*Supplied complete with earth terminal

Sterling Profile aluminium is a popular and stylish looking trunking system that offers a variety of trunking profiles with separate compartment covers.

Product information

- 167 x 50mm
- 3 segregated compartments
- Can be subdivided
- Suitable for dado applications
- A range of polycarbonate clip-on fittings with built-in overlaps
- Fully compatible with Sterling flush power and data accessories

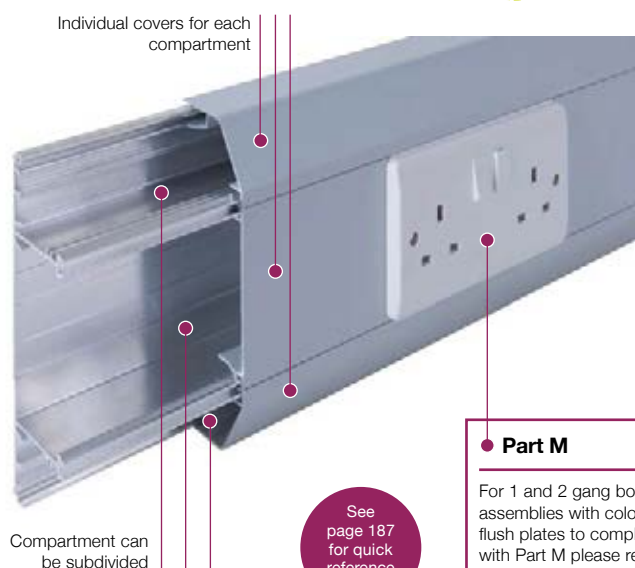
Data information

- Compliant up to Cat 7a
- Data compliant 25mm and 50mm bend radius
- Adjustable data box 32-40mm
- Screened divider and data boxes

Standard Colours	
WH	SG
WH: White	SG: Silver Grey

Colour code suffix: to indicate the finish you require, add the required colour code to the end of the product code.

Colour options: Optional colours and finishes are available but these are subject to minimum quantity orders and longer lead times. For more information contact the Technical Team on +44 (0)1424 856688.



COMPLIANT UP TO
...CAT 7A...



See
page 187
for quick
reference
chart

Part M

For 1 and 2 gang box assemblies with coloured flush plates to comply with Part M please refer to page 104.



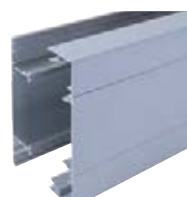
Sterling Profile 3001

size: 167 x 50mm



Sterling Profile 3002

size: 167 x 50mm



Sterling Profile 3003

size: 167 x 50mm



Base unit

code	pack
ETB300MMF*	4 x 3m

*MF=Mill finish



Main compartment cover

code	pack
LTL1SG	1 x 3m



Angled cover

code	pack
ETAC300SG	1 x 3m



Square cover

code	pack
ETSC300SG	1 x 3m

Profile 3001 fittings



**Profile 3001
Coupler**

code	description	pack
ECP401SG	polycarbonate	1



**Profile 3001
End cap**

code	description	pack
EECP401SG	polycarbonate	1



**Profile 3001
Internal bend**

code	description	pack
EIBP401SG	polycarbonate	1



**Profile 3001
External bend**

code	description	pack
EXBP401SG	polycarbonate	1



**Profile 3001
Flat angle – up/down**

code	description	pack
EFAP3001SG	aluminium	1



**Profile 3001
Flat tee – up/down**

code	description	pack
EFTP3001SG	aluminium	1

Profile 3002 fittings



**Profile 3002
Coupler**

code	description	pack
ECP402SG	polycarbonate	1



**Profile 3002
End cap**

code	description	pack
EECP402LHSG	polycarbonate	1
EECP402RHSG	polycarbonate	1

LH = Left hand RH = Right hand



**Profile 3002
Internal bend**

code	description	pack
EIBP402SG	polycarbonate	1



**Profile 3002
External bend**

code	description	pack
EXBP402SG	polycarbonate	1



**Profile 3002
Flat angle – upward**

code	description	pack
EFAP3002USG	aluminium	1



**Profile 3002
Flat angle – downward**

code	description	pack
EFAP3002DSG	aluminium	1

Sterling Profile 3002 flat tees

Where profiles have one angled cover and one square cover, as with Sterling Profile 3002, it is possible to create a tee by changing the top or bottom cover so that covers match the profile of the trunking.
For example:

- Upward tee – select Profile 3001 tee remove the angled bottom cover and replace with square cover.
- Downward tee – select Profile 3003 tee remove the square top cover and replace with angled cover.

Profile 3003 fittings



**Profile 3003
Coupler**

code	description	pack
ECP403SG	polycarbonate	1



**Profile 3003
End cap**

code	description	pack
EECP403SG	polycarbonate	1



**Profile 3003
Internal bend**

code	description	pack
EIBP403SG	polycarbonate	1



**Profile 3003
External bend**

code	description	pack
EXBP403SG	polycarbonate	1



**Profile 3003
Flat angle – up/down**

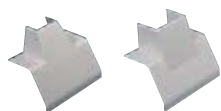
code	description	pack
EFAP3003SG	aluminium	1



**Profile 3003
Flat tee – up/down**

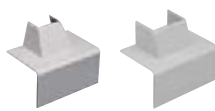
code	description	pack
EFTP3003SG	aluminium	1

Fittings



Angled mini-trunking adaptor (polycarbonate)

code	Description	pack
EATA402SG	MMT2	5
EATA404SG	MMT4	1



Square mini-trunking adaptor (polycarbonate)

code	Description	pack
ESTA402SG	MMT2	5
ESTA404SG	MMT4	1

Components



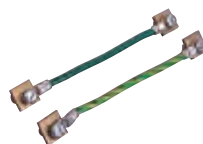
Dividing fillet (PVC-U)

code	description	pack
EDF1	outer 8 x 3m	



Earth bonding kit

code	description	pack
LBT3		1



Bonding strap

code	description	pack
LBS1	base to base 32Amp	5



Bonding strap

code	description	pack
LBS2	cover to base	5

Coupler pin

code	description	pack
LDP1	ø2.0 x 20mm	10

To aid alignment of base profiles



Main crossover bridge (PVC-U)

code	pack
EMCB1	5



Angled cable retainer (PVC-U)

code	pack
EACR1	10



Main cable retainer (PVC-U)

code	pack
EMCR1	10

Boxes and plates



RCD/MCB housing

code	description	pack
EAHC1MWH	PVC-U	1

*Up to 4 modules can be accommodated

Note: RCDs and MCBs are not supplied by Marshall-Tufflex



1 gang accessory box 30mm deep (polycarbonate)

code	pack
ESSB1SG	1
ESSBA1WH	1



2 gang accessory box 30mm deep (polycarbonate)

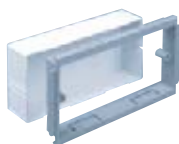
code	pack
ESSB2SG	1
ESSBA2WH	1



1 gang adjustable depth box

code	depth	pack
EAB1SG	32-40mm	1

Fully adjustable to 47mm. Please see page 311 for more information.



2 gang adjustable depth box

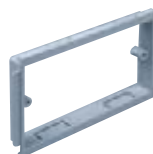
code	depth	pack
EAB2SG	32 - 40mm	1

Fully adjustable to 47mm. Please see page 311 for more information.



1 gang accessory plate

code	pack
ESSP1SG	2



2 gang accessory plate

code	pack
ESSP2SG	2

Quick reference chart

Sterling Profile aluminium component chart

Base unit

Pack	4 x 3m
Milled aluminium	

**Main compartment cover**

Pack	1 x 3m
------	--------

**Angled cover**

Pack	1 x 3m
------	--------

**Square cover**

Pack	1 x 3m
------	--------

**Couplers**

Pack	1
------	---

**End caps**

Pack	1
Left or right handed	

**Internal bends**

Pack	1
Internal base corner needs to be mitred	

**External bends**

Pack	1
External base corner needs to be mitred	

**Flat angles**

Pack	1
Upward or downward	

**† Flat tees**

Pack	1
† See Flat Tee information below	

**3 compartment**

Profile 3001
167 x 50mm



Profile 3002
167 x 50mm



Profile 3003
167 x 50mm



ETB300MMF

ETB300MMF

ETB300MMF

LTL1SG

LTL1SG

LTL1SG

2 x ETAC300SG

1 x ETAC300SG

–

–

1x ETSC300SG

2 x ETSC300SG

ECP401SG

ECP402SG

ECP403SG

EECP401SG

EECP402LHSG
EECP402RHSG

EECP403SG

EIBP401SG

EIBP402SG

EIBP403SG

EXBP401SG

EXBP402SG

EXBP403SG

EFAP3001SG

EFAP3002USG
EFAP3002DSG

EFAP3003SG

EFTP3001SG

†

EFTP3003SG

† Sterling Profile 3002 flat tees

Where profiles have one angled cover and one square cover, as with Sterling Profile 3002, it is possible to create a tee by changing the top or bottom cover so that covers match the profile of the trunking. For example:

- Upward tee – select Profile 3001 tee remove the angled bottom cover and replace with square cover.
- Downward tee – select Profile 3003 tee remove the square top cover and replace with angled cover.

Screened boxes

Screening

Conductive spray (CS) is unique to Marshall-Tufflex and is applied in the factory to assist with screening from electromagnetic interference to data and communications cabling within trunking systems. The coating is applied to a range of data boxes, covers, clip-on components and fabricated fittings.

WARNING: A CS coating is not suitable for low voltage circuits.

**1 gang screened accessory box**

...CAT 7A+

code	depth	description	pack
ESSB1SWH*	30mm	PVC-U	20

2 gang screened accessory box

...CAT 7A+

code	depth	description	pack
ESSB2SWH*	30mm	PVC-U	10

*Supplied complete with earth terminal

p298

Technical
Information

XL aluminium trunking 301 to 303 comprises a range of deep, 3-compartment systems that provide extra capacity and screening performance levels for data cabling.

COMPLIANT UP TO
...CAT 7A...



Product information

- 220 x 65mm
- 3 deep segregated compartments
- Compartments can be subdivided
- Suitable for dado and skirting applications (XL301 is recommended for dado application only)
- Includes a range of polycarbonate clip-on fittings with built-in overlaps
- Fully compatible with Sterling flush power and data accessories

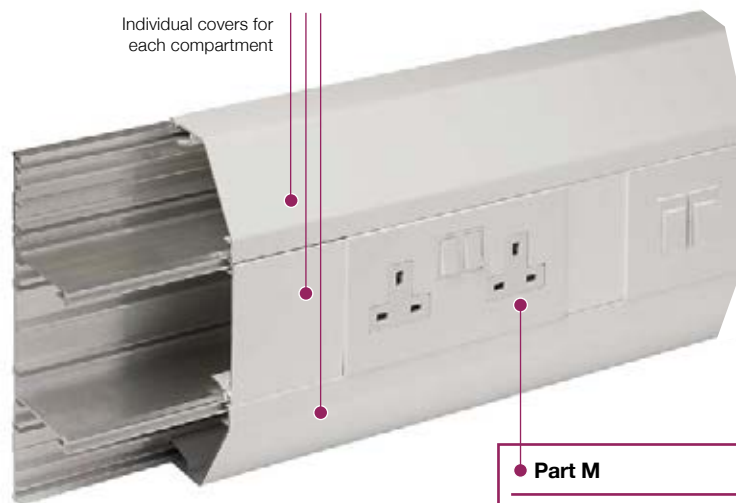
Data information

- Compliant up to Cat 7a*
- Data compliant 25mm and 50mm bend radius
- External bends feature internal segregators
- Adjustable data box 32mm - 47mm
- Screened divider and data boxes

Standard Colours	
WH	SG
WH: White	SG: Silver Grey

Colour code suffix: to indicate the finish you require, add the required colour code to the end of the product code.

Colour options: Optional colours and finishes are available but these are subject to minimum quantity orders and longer lead times. For more information contact the Technical Team on +44 (0)1424 856688.



Individual covers for each compartment

See page 191 for quick reference chart

Part M

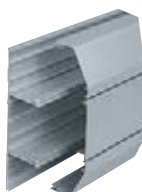
For 1 and 2 gang box assemblies with coloured flush plates to comply with Part M please refer to page 104.



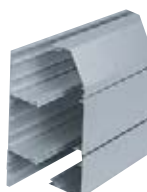
*Data fittings

For made to order fittings to meet Cat 7a requirements please contact our Technical Team on +44 (0)1424 856688

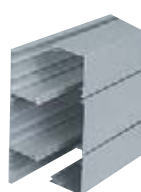
Trunking profiles



***XL 301**
size 220 x 65mm



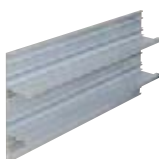
XL 302
size 220 x 65mm



XL 303
size 220 x 65mm

*For dado installation only

Basic components



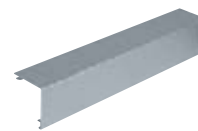
Base unit
code pack
ELTB300 4 x 3m



Main compartment cover
code pack
LTL1SG 1 x 3m



Angled cover
code pack
ELAC300SG 1 x 3m



Square cover
code pack
ELSC300SG 1 x 3m

p303

Technical
Information

XL 301 fittings



**XL 301
Coupler**

code	description	pack
EC301SG	polycarbonate	1



**XL 301
End cap**

code	description	pack
EEC301SG	polycarbonate	1



**XL 301
Internal bend**

code	description	pack
EIB301SG	polycarbonate	1



**XL 301
External bend**

code	description	pack
EXB301SG	polycarbonate	1



**XL 301
Flat angle – up/down**

code	description	pack
EFA301SG	aluminium	1



**XL 301
Flat tee – up/down**

code	description	pack
EFT301SG	aluminium	1

XL 302 fittings



**XL 302
Coupler**

code	description	pack
EC302SG	polycarbonate	1



**XL 302
End cap**

code	description	pack
EEC302LHSG	polycarbonate	1
EEC302RHSG	polycarbonate	1

LH = Left hand RH = Right hand



**XL 302
Internal bend**

code	description	pack
EIB302SG	polycarbonate	1



**XL 302
External bend**

code	description	pack
EXB302SG	polycarbonate	1



**XL 302
Flat angle – upward**

code	description	pack
EFA302USG	aluminium	1



**XL 302
Flat angle – downward**

code	description	pack
EFA302DSG	aluminium	1

XL Trunking 302 flat tees

Where profiles have one angled cover and one square cover, as with XL 302, it is possible to create a tee by changing the top or bottom cover so that covers match the profile of the trunking. For example:

- Upward tee – select XL 301 tee remove the angled bottom cover and replace with square cover.
- Downward tee – select XL 303 tee remove the square top cover and replace with angled cover.

XL 303 fittings



**XL 303
Coupler**

code	description	pack
EC303SG	polycarbonate	1



**XL 303
End cap**

code	description	pack
EEC303SG	polycarbonate	1



**XL 303
Internal bend**

code	description	pack
EIB303SG	polycarbonate	1



**XL 303
External bend**

code	description	pack
EXB303SG	polycarbonate	1



**Flat angle – up/down
XL 303**

code	description	pack
EFA303SG	aluminium	1



**XL 303
Flat tee – up/down**

code	description	pack
EFT303SG	aluminium	1

Components

**Dividing fillet**

code	pack
ELDF200	8 x 3m

**Earth bonding kit**

code	pack
LBT3	1

**Bonding strap**

code	description	pack
LBS1	base to base 32Amp	5

**Bonding strap**

code	description	pack
LBS2	cover to base	5

Coupler pin

code	description	pack
LDP1	ø2.0 x 20mm	10

To aid alignment of base profiles

Boxes and plates

**RCD/MCB housing**

code	description	pack
EAHC1MWH	PVC-U	1

*Up to 4 modules can be accommodated

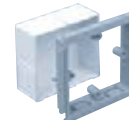
Note: RCDs and MCBs are not supplied by Marshall-Tufflex

**1 gang accessory box
30mm deep (polycarbonate)**

code	pack
ESSB1SG	1
ESSBA1WH	1

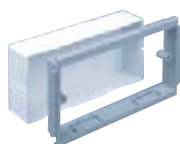
**2 gang accessory box
30mm deep (polycarbonate)**

code	pack
ESSB2SG	1
ESSBA2WH	1

**1 gang adjustable depth box**

code	depth	pack
EAB1SG	32-40mm	1

Fully adjustable to 47mm.
Please see page 311 for more information.

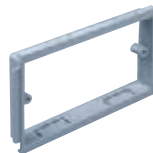
**2 gang adjustable depth box**

code	depth	pack
EAB2SG	32 – 40mm	1

Fully adjustable to 47mm.
Please see page 311 for more information.

**1 gang accessory plate**

code	pack
ESSP1SG	2

**2 gang accessory plate**

code	pack
ESSP2SG	2

Screened boxes

Screening

Conductive spray (CS) is unique to Marshall-Tufflex and is applied in the factory to assist with screening from electromagnetic interference to data and communications cabling within trunking systems. The coating is applied to a range of data boxes, covers, clip-on components and fabricated fittings.

WARNING: A CS coating is not suitable for low voltage circuits.

**1 gang screened accessory box**

code	depth	description	pack
ESSB1SWH*	30mm	PVC-U	20

2 gang screened accessory box

code	depth	description	pack
ESSB2SWH*	30mm	PVC-U	10

*Supplied complete with earth terminal

Quick reference chart

XL Aluminium 301 to 303

Base unit

Pack 4 x 3m

Features earth bonding rail and screw ports to aid the fastening of pipe clips and gas valves etc

Main compartment cover

Pack 1 x 3m

Angled cover

Pack 1 x 3m

Square cover

Pack 1 x 3m

Couplers

Pack 1

End caps

Pack 1

left or right hand

Internal bends

Pack 1

External bends

Pack 1

Flat angles

Pack 1

upward or downward

† Flat tees

Pack 1

† See Flat Tee information below

3 Compartment**XL 301**

220 x 65mm

**XL 302**

220 x 65mm

**XL 303**

220 x 65mm



ELTB300

ELTB300

ELTB300

LTL1SG

LTL1SG

LTL1SG

2 x ELAC300SG

1 x ELAC300SG

-

-

1 x ELSC300SG

2 x ELSC300SG

EC301SG

EC302SG

EC303SG

EEC301SG

EEC302LHSG
EEC302RHSG

EEC303SG

EIB301SG

EIB302SG

EIB303SG

EXB301SG

EXB302SG

EXB303SG

EFA301SG

EFA302USG
EFA302DSG

EFA303SG

EFT301SG

†

EFT303SG

† XL Trunking 302 flat tees

Where profiles have one angled cover and one square cover, as with XL 302, it is possible to create a tee by changing the top or bottom cover so that covers match the profile of the trunking. For example:

- Upward tee – select XL 301 tee remove the angled bottom cover and replace with square cover.
- Downward tee – select XL 303 tee remove the square top cover and replace with angled cover.

p303

Technical
Information

XL aluminium trunking 311 to 313 comprises a range of deep, multi-compartment systems that provide extra capacity and screening performance levels for data cabling. XL 311, 312 and 313 offer the facility to extend height for higher density cabling.



Product information

- 308 x 65mm
- 4 or more deep segregated compartments
- Compartments can be subdivided
- Suitable for dado and skirting applications (XL 311 is recommended for dado application only)
- Includes a range of polycarbonate clip-on fittings with built-in overlaps
- Fully compatible with Sterling flush power and data accessories

Data information

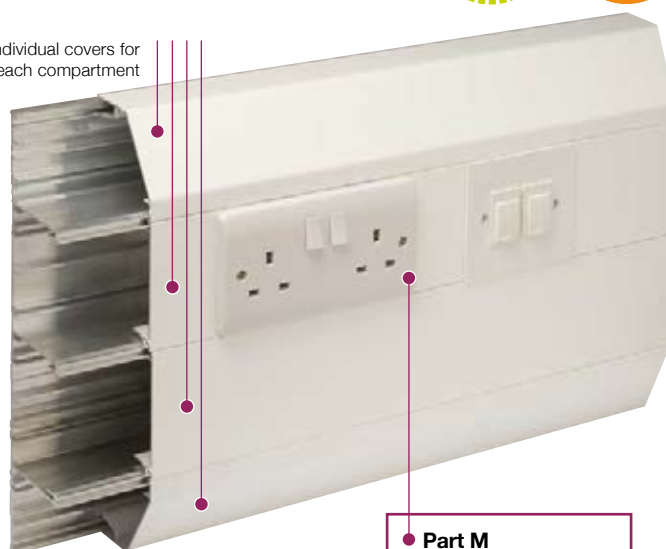
- Compliant up to Cat 7a*
- Data compliant 25mm and 50mm bend radius
- External bends feature internal segregators
- Adjustable data box 32mm - 47mm
- Screened divider and data boxes

Standard Colours	
WH	SG
WH: White	SG: Silver Grey

Colour code suffix: to indicate the finish you require, add the required colour code to the end of the product code.

Colour options: Optional colours and finishes are available but these are subject to minimum quantity orders and longer lead times. For more information contact the Technical Team on +44 (0)1424 856688.

Individual covers for each compartment



See page 195 for quick reference chart

Part M

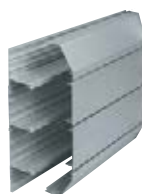
For 1 and 2 gang box assemblies with coloured flush plates to comply with Part M please refer to page 104.



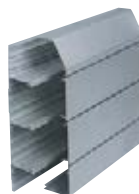
#Data fittings

For made to order fittings to meet Cat 7a requirements please contact our Technical Team on +44 (0)1424 856688

Trunking profiles



***XL 311**
size 308 x 65mm
*For dado installation only

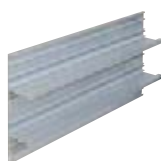


XL 312
size 308 x 65mm



XL 313
size 308 x 65mm

Basic components



Base unit
code pack
ELTB300 4 x 3m



Main compartment cover
code pack
LTL1SG 1



Angled cover
code pack
ELAC300SG 1 x 3m



Square cover
code pack
ELSC300SG 1 x 3m



Extendable base*
code pack
ELEB300 1 x 3m

* To increase number of compartments

p303

Technical Information

XL 311 fittings



**XL 311
Coupler**

code	description	pack
EC311SG	polycarbonate	1



**XL 311
End cap**

code	description	pack
EEC311SG	polycarbonate	1



**XL 311
Internal bend**

code	description	pack
EIB311SG	polycarbonate	1



**XL 311
External bend**

code	description	pack
EXB311SG	polycarbonate	1



**XL 311
Flat angle – up/down**

code	description	pack
EFA311SG	aluminium	1



**XL 311
Flat tee – up/down**

code	description	pack
EFT311SG	aluminium	1

XL 312 fittings



**XL 312
Coupler**

code	description	pack
EC312SG	polycarbonate	1



**XL 312
End cap**

code	description	pack
EEC312LHSG	polycarbonate	1
EEC312RHSG	polycarbonate	1

LH = Left hand RH = Right hand



**XL 312
Internal bend**

code	description	pack
EIB312SG	polycarbonate	1



**XL 312
External bend**

code	description	pack
EXB312SG	polycarbonate	1



**XL 312
Flat angle – upward**

code	description	pack
EFA312USG	aluminium	1



**XL 312
Flat angle – downward**

code	description	pack
EFA312DSG	aluminium	1

XL Trunking 312 flat tees

Where profiles have one angled cover and one square cover, as with XL 312, it is possible to create a tee by changing the top or bottom cover so that covers match the profile of the trunking. For example:

- Upward tee – select XL 311 tee remove the angled bottom cover and replace with square cover.
- Downward tee – select XL 313 tee remove the square top cover and replace with angled cover.

XL 313 fittings



**XL 313
Coupler**

code	description	pack
EC313SG	polycarbonate	1



**XL 313
End cap**

code	description	pack
EEC313SG	polycarbonate	1



**XL 313
Internal bend**

code	description	pack
EIB313SG	polycarbonate	1



**XL 313
External bend**

code	description	pack
EXB313SG	polycarbonate	1



**XL 313
Flat angle – up/down**

code	description	pack
EFA313SG	aluminium	1



**XL 313
Flat tee – up/down**

code	description	pack
EFT313SG	aluminium	1

End cap retaining screws

When installing end caps, additional retention can be achieved by using end cap retaining screws G1310 (pack 40).

Components

**Dividing fillet**

code	description	pack
ELDF200	8 x 3m	

**Earth bonding kit**

code	description	pack
LBT3		1

**Bonding strap**

code	description	pack
LBS1	base to base 32 amp	5

**Bonding strap**

code	description	pack
LBS2	cover to base	5

Coupler pin

code	description	pack
LDP1	ø2.0 x 20mm	10

To aid alignment of base profiles

Boxes and plates

**RCD/MCB housing**

code	description	pack
EAHC1MWH	PVC-U	1

*Up to 4 modules can be accommodated

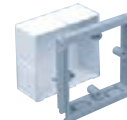
Note: RCDs and MCBs are not supplied by Marshall-Tufflex

**1 gang accessory box
30mm deep (polycarbonate)**

code	description	pack
ESSB1SG		1
ESSBA1WH		1

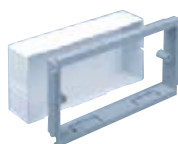
**2 gang accessory box
30mm deep (polycarbonate)**

code	description	pack
ESSB2SG		1
ESSBA2WH		1

**1 gang adjustable depth box**

code	description	pack
EAB1SG	32-40mm	1

Fully adjustable to 47mm.
Please see page 311 for more information.

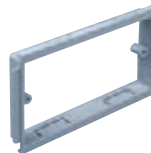
**2 gang adjustable depth box**

code	description	pack
EAB2SG	32 – 40mm	1

Fully adjustable to 47mm.
Please see page 311 for more information.

**1 gang accessory plate**

code	description	pack
ESSP1SG		2

**2 gang accessory plate**

code	description	pack
ESSP2SG		2

Screened boxes

Screening

Conductive spray (CS) is unique to Marshall-Tufflex and is applied in the factory to assist with screening from electromagnetic interference to data and communications cabling within trunking systems. The coating is applied to a range of data boxes, covers, clip-on components and fabricated fittings.

WARNING: A CS coating is not suitable for low voltage circuits.

**1 gang screened accessory box**

code	description	pack
ESSB1SWH*	30mm PVC-U	20

2 gang screened accessory box

code	description	pack
ESSB2SWH*	30mm PVC-U	10

*Supplied complete with earth terminal

Quick reference chart

XL Aluminium 311 to 313

Base unit

Pack 4 x 3m

Features earth bonding rail and screw ports to aid the fastening of pipe clips and gas valves etc

Extendable base

Pack 1 x 3m

Additional 88mm compartment

Main compartment cover

Pack 1 x 3m

Angled cover

Pack 1 x 3m

Square cover

Pack 1 x 3m

Couplers

Pack 1

End caps

Pack 1

left or right hand

Internal bends

Pack 1

External bends

Pack 1

Flat angles

Pack 1

upward or downward

† Flat tees

Pack 1

† See Flat Tee information below

4 Compartment

XL 311

308 x 65mm



XL 312

308 x 65mm



XL 313

308 x 65mm



ELTB300

ELTB300

ELTB300

ELEB300

ELEB300

ELEB300

2 x LTL1SG

2 x LTL1SG

2 x LTL1SG

2 x ELAC300SG

1 x ELAC300SG

–

–

1 x ELSC300SG

2 x ELSC300SG

EC311SG

EC312SG

EC313SG

EEC311SG

EEC312LHSG
EEC312RHSG

EEC313SG

EIB311SG

EIB312SG

EIB313SG

EXB311SG

EXB312SG

EXB313SG

EFA311SG

EFA312USG
EFA312DSG

EFA313SG

EFT311SG

†

EFT313SG

XL Trunking 312 flat tees

Where profiles have one angled cover and one square cover, as with XL 312, it is possible to create a tee by changing the top or bottom cover so that covers match the profile of the trunking. For example:

- Upward tee – select XL 311 tee remove the angled bottom cover and replace with square cover.
- Downward tee – select XL 313 tee remove the square top cover and replace with angled cover.

p303

Technical
Information

Twin Plus aluminium is an extra deep cable management solution incorporating two large segregated high capacity compartments. Twin Plus is specifically designed for carrying large quantities of Cat 7a data cabling.



Product information

- 210 x 57mm
- 2 large permanent segregated compartments
- Each compartment can be subdivided
- Suitable for dado and skirting applications
- Bends angles and tees with a large bend radius
- Includes a range of clip-on fittings with built-in overlaps
- Fully compatible with Sterling flush power and data accessories
- All fittings are polycarbonate

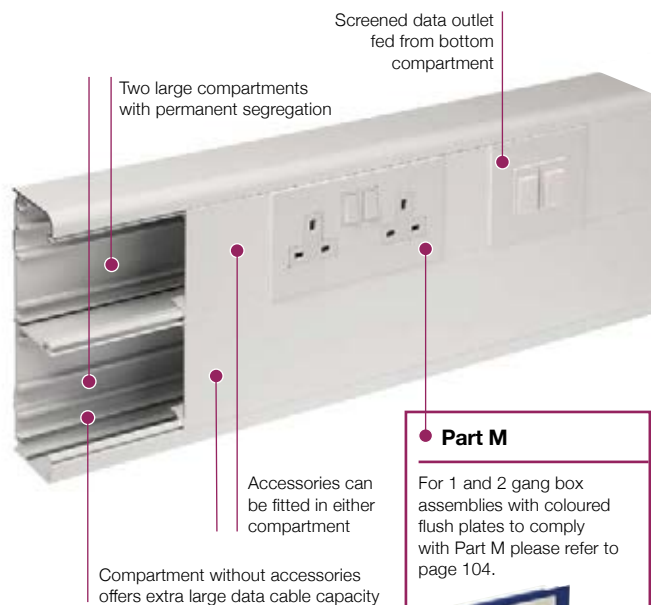
Data information

- Compliant up to Cat 7a#
- 50mm bend radius fittings
- Adjustable data box 32-47mm
- Screened divider and data boxes

Standard Colours	
WH	SG
WH: White	SG: Silver Grey

Colour code suffix: to indicate the finish you require, add the required colour code to the end of the product code.

Colour options: Optional colours and finishes are available but these are subject to minimum quantity orders and longer lead times. For more information contact the Technical Team on +44 (0)1424 856688.



Part M

For 1 and 2 gang box assemblies with coloured flush plates to comply with Part M please refer to page 104.



#Data fittings

For made to order fittings to meet Cat 7a requirements please contact our Technical Team on +44 (0)1424 856688

Basic components



Base unit

code	pack
EMTA60SG	1 x 3m



Main compartment cover (aluminium)

code	pack
LTL1SG	1 x 3m

Fittings (Polycarbonate)



Coupler

code	pack
EC60SG	1



End cap

code	pack
EEC60SG	1



Internal bend cover

code	pack
EIBC60SG	1



Internal bend assembly

code	pack
EIB60SG	1



Standard external bend cover

code	pack
ESXBC60SG	1

End cap retaining screws

When installing end caps, additional retention can be achieved by using end cap retaining screws G1310 (pack 40).

p301

Technical Information

Fittings (Polycarbonate)

**External bend assembly - standard** ---CAT 7A+

code	pack
ESXB60SG	1

Capacity reduced by 50%

**External bend assembly - large** ---CAT 7A+

code	pack
EXB60SG	1

**Flat angle cover**

code	pack
EFAC60SG	1

**Flat angle assembly** ---CAT 7A+

code	pack
EFA60SG	1

Covers and cable inserts in Polycarbonate

**Flat tee assembly** ---CAT 7A+

code	pack
EFTA60SG	1

Flat tees include covers, cable inserts in Polycarbonate with base in aluminium

Components

**Dividing fillet (PVC-U)**

code	pack
LDF1	8 x 3m

**Earth bonding kit**

code	pack
LBT3	1

**Bonding strap**

code	description	pack
LBS1	base to base 32 amp	5

**Bonding strap**

code	description	pack
LBS2	cover to base	5

Coupler pin

code	description	pack
LDP1	ø2.0 x 20mm	10

To aid alignment of base profiles

Boxes and plates

**RCD/MCB housing**

code	description	pack
EAHC1MWH	PVC-U	1

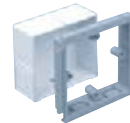
*Up to 4 modules can be accommodated
Note: RCDs and MCBs are not supplied by Marshall-Tufflex

**1 gang accessory box 30mm deep (polycarbonate)**

code	pack
ESSB1SG	1
ESSBA1WH	1

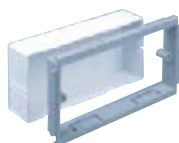
**2 gang accessory box 30mm deep (polycarbonate)**

code	pack
ESSB2SG	1
ESSBA2WH	1

**1 gang adjustable depth box** ---CAT 7A+

code	depth	pack
EAB1SG	32-40mm	1

Fully adjustable to 47mm. Please see page 311 for more information.

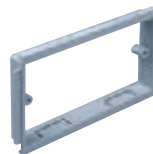
**2 gang adjustable depth box** ---CAT 7A+

code	depth	pack
EAB2SG	32 - 40mm	1

Fully adjustable to 47mm. Please see page 311 for more information.

**1 gang accessory plate** ---CAT 7A+

code	pack
ESSP1SG	2

**2 gang accessory plate** ---CAT 7A+

code	pack
ESSP2SG	2

Screening

Conductive spray (CS) is unique to Marshall-Tufflex and is applied in the factory to assist with screening from electromagnetic interference to data and communications cabling within trunking systems. The coating is applied to a range of data boxes, covers, clip-on components and fabricated fittings.

WARNING: A CS coating is not suitable for low voltage circuits.



1 gang screened accessory box

CAT 7A

code	depth	description	pack
ESSB1SWH*	30mm	PVC-U	20

2 gang screened accessory box

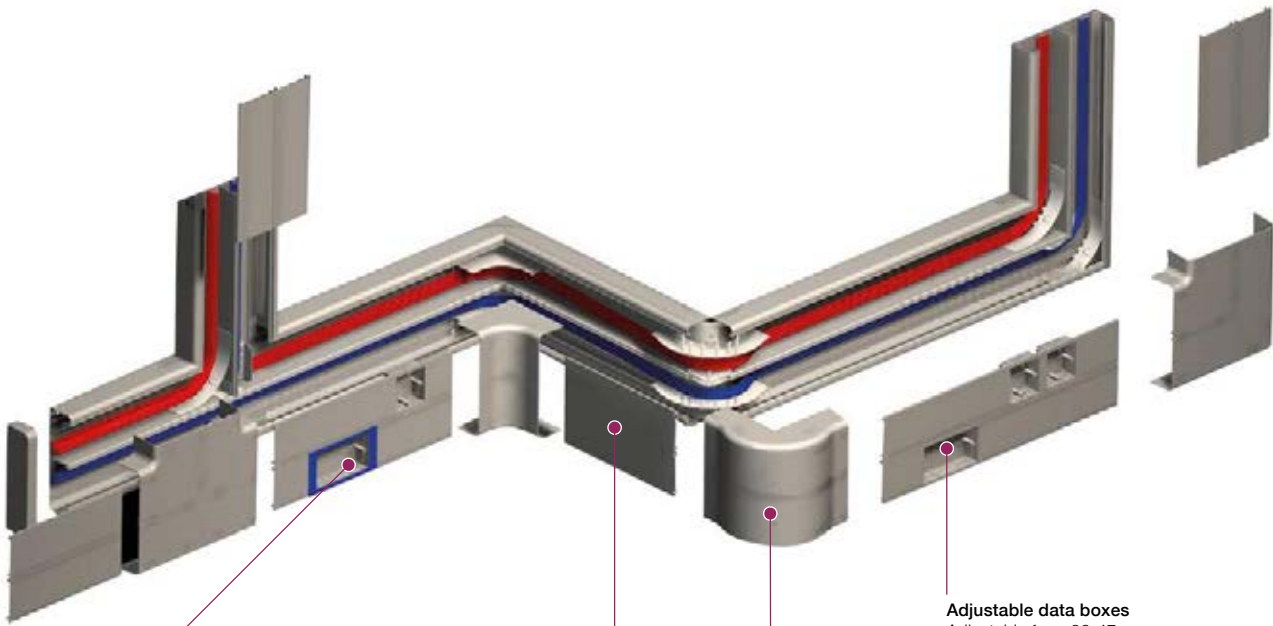
CAT 7A

code	depth	description	pack
ESSB2SWH*	30mm	PVC-U	10

*Supplied complete with earth terminal

Twin Plus aluminium

Twin Plus aluminium is a high cable capacity trunking system with a variety of practical features for power and data installations



Part M boxes
Boxes available to meet Part M/DDA requirements for visual impairment

Two separate compartments
Two large compartments that can be sub-divided, each with their own cover

Polycarbonate flat tees and angles
With integral 50mm bend radius control

Adjustable data boxes
Adjustable from 32-47mm
Can be screened against EMI

Bench trunking aluminium is a robust angled trunking that can be mounted directly on to desks, work benches or fitted under shelving.

COMPLIANT UP TO
...CAT 7A...



Product information

- 105 x 105mm
- Suitable for desk, bench or worktop applications
- Can be subdivided
- Fully compatible with Sterling flush power and data accessories

Data information

- Compliant up to Cat 7a#
- Adjustable data box 32-47mm
- Screened divider and data boxes

Standard Colours	
WH	SG
WH: White	SG: Silver Grey

Colour code suffix: to indicate the finish you require, add the required colour code to the end of the product code.

Colour options: Optional colours and finishes are available but these are subject to minimum quantity orders and longer lead times. For more information contact the Technical Team on +44 (0)1424 856688.



Can be subdivided

Part M

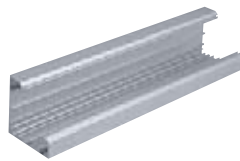
For 1 and 2 gang box assemblies with coloured flush plates to comply with Part M please refer to page 104.



#Data fittings

For made to order fittings to meet Cat 7a requirements please contact our Technical Team on +44 (0)1424 856688

Basic components



Base unit

code	size	pack
MBTAB105SG	105 x 105mm	1 x 3m



Cover

code	pack
MBTAL105SG	1 x 3m

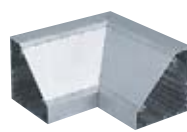
Fittings



End cap (steel)

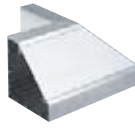
code	pack
BECA105SG	1

with fixing screws



Internal angle (aluminium)

code	pack
BIAA105SG	1



External angle (aluminium)

code	pack
BEAA105SG	1

Bench units



1 gang bench unit

code	description	pack
MBUA1SG	no socket	1
MBSA1SG	ESS1SG socket	1



2 gang bench unit

code	description	pack
MBUA2SG	no socket	1
MBSA2SG	ESS2SG socket	1



1 & 2 gang bench unit

code	description	pack
MBUA3SG	no sockets	1

p296

Technical Information

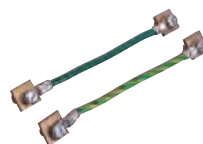
Components

**Dividing fillet (PVC-U)**

code	pack
BDF105WH	4 x 3m

**Earth bonding kit**

code	pack
LBT3	1

**Bonding strap**

code	description	pack
LBS1	base to base 32 amp	5

**Bonding strap**

code	description	pack
LBS2	cover to base	5

Coupler pin

code	description	pack
LDP1	ø2.0 x 20mm	10

To aid alignment of base profiles

**Bonding strap**

code	description	pack
LBS3	end cap to base	1

Boxes and plates

**RCD/MCB housing**

code	description	pack
EAHC1MWH	PVC-U	1

*Up to 4 modules can be accommodated

Note: RCDs and MCBs are not supplied by Marshall-Tufflex

**1 gang accessory box 30mm deep (polycarbonate)**

code	pack
ESSB1SG	1
ESSBA1WH	1

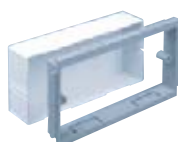
**2 gang accessory box 30mm deep (polycarbonate)**

code	pack
ESSB2SG	1
ESSBA2WH	1

**1 gang adjustable depth box**

code	depth	pack
EAB1SG	32-40mm	1

Fully adjustable to 47mm. Please see page 311 for more information.

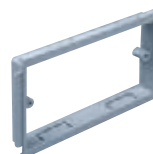
**2 gang adjustable depth box**

code	depth	pack
EAB2SG	32 - 40mm	1

Fully adjustable to 47mm. Please see page 311 for more information.

**1 gang accessory plate**

code	pack
ESSP1SG	2

**2 gang accessory plate**

code	pack
ESSP2SG	2

Screened boxes

Screening

Conductive spray (CS) is unique to Marshall-Tufflex and is applied in the factory to assist with screening from electromagnetic interference to data and communications cabling within trunking systems. The coating is applied to a range of data boxes, covers, clip-on components and fabricated fittings.

WARNING: A CS coating is not suitable for low voltage circuits.

**1 gang screened accessory box**

code	depth	description	pack
ESSB1SWH*	30mm	PVC-U	20

2 gang screened accessory box

code	depth	description	pack
ESSB2SWH*	30mm	PVC-U	10

*Supplied complete with earth terminal