

# Steel perimeter trunking systems

[www.marshall-tufflex.com](http://www.marshall-tufflex.com)

Steel trunking systems incorporate clean lines with a functionality that provides greater mechanical strength combined with first class fire performance and excellent screening capability.



# Steel perimeter trunking systems

Steel has a mechanical strength that makes it a robust and durable option for public areas where there is a high footfall. Steel trunking provides specifiers, contractors and end-users with reliable, practical systems with hard-wearing, clean lines and all the advantages of inherent LSOH and screening properties. The extra depth provided by Marshall-Tufflex steel perimeter trunking systems offers increased capacity for power and data services. All earth bondings are 'friction fit' to eliminate the need for unsightly screw fixings.



## Environmental

- Steel is very friendly to the environment.
- Compared to other materials it requires relatively low amounts of energy to produce.
- The steel industry has made immense efforts to limit environmental pollution in the last decades.
- Energy consumption and carbon dioxide emissions have decreased by half of what they were in the 1960s.
- Dust emissions have been reduced by even more.



## Recycling and sustainability

- 100% recyclable material.
- Can be recycled many times without loss of quality.
- The steel industry has been recycling for more than 150 years.
- Recycling one ton of steel saves 1,100 kilos of iron ore, 630 kilos of coal and 55 kilos of limestone.
- Structural steel typically contains around 95% recycled steel content.
- Recycling facilities are well established.



## EMC properties

- An excellent EMC/EMI screening material.



## Fire performance

- Steel trunking systems meet accepted requirements for LSOH.
- Withstands high temperatures with a melting point of approximately 1370°C (2500°F).
- Type and thickness of any coating needs to be considered as this can affect fire performance.

All steel systems are available with standard powder coat white finish to RAL 9010. Other colours are available but will be subject to longer lead times and minimum order quantities. For more information please call our Technical Team on 01424 856688.

**System 130****130 x 63mm**

A compact rectangular dado trunking also suitable as a feeder trunking.



Page  
134

**System 170****170 x 63mm**

A mid-size rectangular dado and skirting trunking also suitable as a feeder trunking.



Page  
136

**System 210 Twin****210 x 63mm**

High capacity dado or skirting trunking with two large compartments with in-built segregation of power and data.



Page  
138

**Information**

Please note that our steel systems may be subject to lead times. For further information please call the Technical Team on 01424 856688.

**Note:** you may use the rule on the left of this page to check profile sizes.

Steel System 130 is compact pre-galvanised trunking system with extra depth and a resilient white powder-coat finish that helps to prevent smearing and marking.

#### Product information

- 130 x 63mm
- 1 main compartment
- Can be sub-divided
- Suitable for dado application

Can be sub-divided  
into 3 compartments

Single cover

Friction-fit covers and bonding  
assemblies eliminate need for  
separate bonding leads



Standard colour
WH
WH: White

**Options:** optional colours are available but these may be subject to minimum quantity orders and longer lead times. For more information contact the Technical Team on 01424 856688.

### Basic components



#### Base unit

code	size	pack
8555013	130 x 63mm	1 x 2m



#### Cover

code	length	pack
8555043	1m	10 x 1m
8555073	1.5m	10 x 1.5m



#### Dividing fillet

code	length	pack
8510066	2m	10 x 2m

### Fittings



#### External tolerance sleeve

code	width	pack
8555113	40mm	5



#### External joint cover

code	width	pack
8555123	25mm	5



#### End cap

code	pack
8555103	5

For use with LBS3



#### Internal bend base

code	pack
8555143	1



#### External bend base

code	pack
8555153	1



#### External bend cover

code	pack
8555173	1

## Fittings



Universal int/ext bend

code	pack
8555133	1



Flat angle base – up/down

code	pack
8555203	1



Flat angle cover

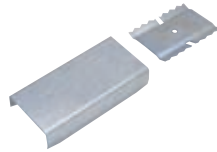
code	pack
8555223	1



Flat tee base – up/down

code	pack
8555253	1

## Bonding assemblies



Internal coupling/bonding set

code	pack
8555030	5



End cap bonding strap

code	pack
LBS3	1

## Accessories



Cable retaining clip

code	pack
8511006	10

Touch-up paint RAL 9010

code	size	pack
8190072	25ml	1

## Boxes



1 gang accessory box

code	depth	pack
RSSB10WH	40mm	12



2 gang accessory box

code	depth	pack
RSSB20WH	40mm	6



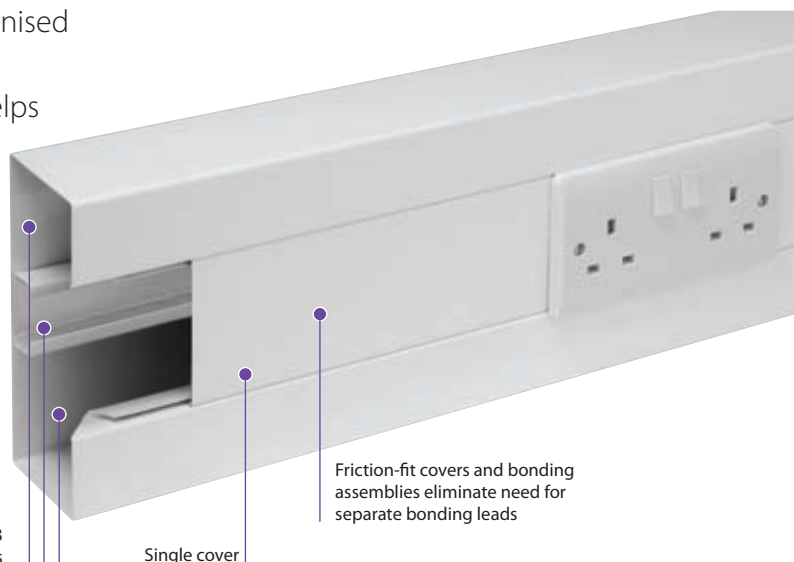
Cover spacer for accessory boxes

code	width	pack
WG01085	50mm	10

Steel System 170 is a mid-sized pre-galvanised trunking system with extra depth and a resilient white powder-coat finish that helps to prevent smearing and marking.

#### Product information

- 170 x 63mm
- 1 main compartment
- Can be sub-divided
- Suitable for dado application



Can be sub-divided into 3 compartments

Single cover

Friction-fit covers and bonding assemblies eliminate need for separate bonding leads

Standard colour
WH
WH: White

Options: optional colours are available but these may be subject to minimum quantity orders and longer lead times. For more information contact the Technical Team on 01424 856688.

### Basic components



Base unit

code	size	pack
8556013	170 x 63mm	1 x 2m



Cover

code	length	pack
8555043	1m	10 x 1m
8555073	1.5m	10 x 1.5m



Dividing fillet

code	length	pack
8510066	2m	10 x 2m

### Fittings



External tolerance sleeve

code	width	pack
8556113	40mm	5



External joint cover

code	width	pack
8556123	25mm	5



End cap

code	pack
8556103	5

For use with LBS3



Internal bend base

code	pack
8556143	1



External bend base

code	pack
8556153	1



External bend cover

code	pack
8555173	1

## Fittings



Universal int/ext bend

code	pack
8556133	1



Flat angle base – up/down

code	pack
8556203	1



Flat angle cover

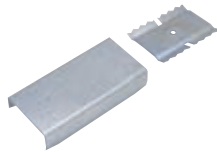
code	pack
8555223	1



Flat tee base – up/down

code	pack
8556253	1

## Bonding assemblies



Internal coupling/bonding set

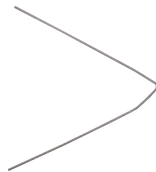
code	pack
8556030	5



End cap bonding strap

code	pack
LBS3	1

## Accessories



Cable retaining clip

code	pack
8511006	10

Touch-up paint RAL 9010

code	size	pack
8190072	25ml	1

## Boxes



1 gang accessory box

code	depth	pack
RSSB10WH	40mm	12



2 gang accessory box

code	depth	pack
RSSB20WH	40mm	6



Cover spacer for accessory boxes

code	width	pack
WG01085	50mm	10

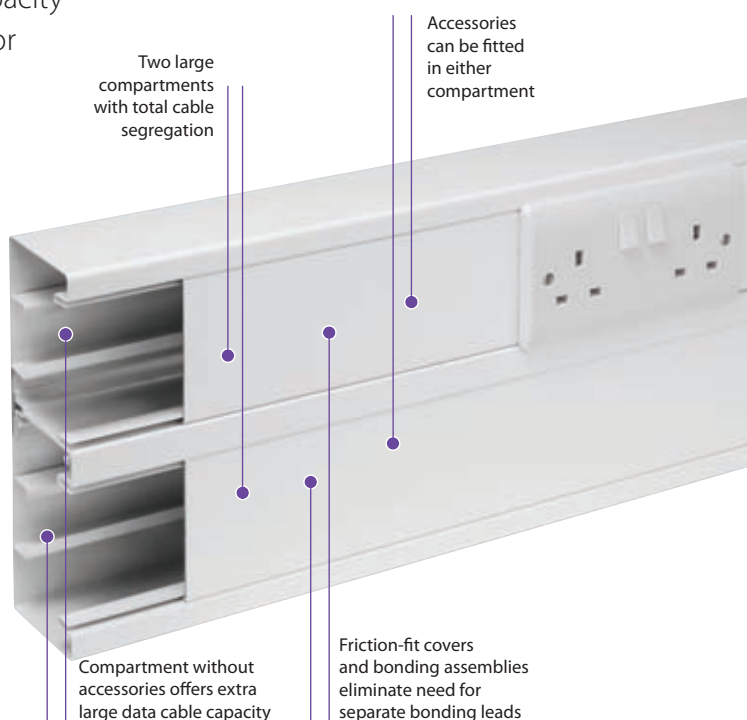
Steel 210 Twin is an extra deep cable management solution incorporating two large segregated high capacity compartments and is specifically designed for carrying large quantities of cabling. 210 Twin is pre-galvanised with a powder-coat surface finish that helps to prevent smearing and marking.

**Product information**

- 210 x 63mm
- 2 large segregated compartments
- Each compartment can be sub-divided
- Suitable for dado and startup applications

Standard colour
WH
WH: White

Options: optional colours are available but these may be subject to minimum quantity orders and longer lead times. For more information contact the Technical Team on 01424 856688.



## Basic components

**Base unit**

code	size	pack
8559513	210 x 63mm	4 x 2m

**Cover**

code	length	pack
8555043	1m	10 x 1m
8555073	1.5m	10 x 1.5m

**Dividing fillet**

code	length	pack
8510066	2m	10 x 2m

## Boxes and fittings

**End cap**

code	pack
8559103	5

Note: use with LBS3

**External joint cover**

code	width	pack
8559623	25mm	5

**External tolerance sleeve**

code	width	pack
8559613	40mm	5

**Internal bend base**

code	pack
8559643	1

**External bend base**

code	pack
8559653	1

**External bend cover**

code	pack
8555173	1

**Flat angle base – up/down**

code	pack
8559703	1

**Flat angle cover**

code	pack
8555223	1

**Cover spacer for accessory boxes**

code	width	pack
WG01085	50mm	10

**Internal coupling/bonding set**

code	pack
8559530	1

**End cap bonding strap**

code	pack
LBS3	1

**1 and 2 gang accessory boxes**

code	depth	pack
RSSB10WH	40mm	12
RSSB20WH	40mm	6