

Power, voice and data accessories for trunking

www.marshall-tufflex.com

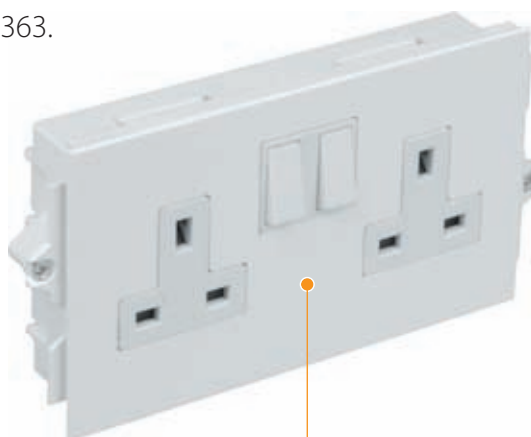
A range of flush and surface accessories that are compatible with Marshall-Tufflex trunking systems.



A range of power accessories that comply with BS 1363.

Product information

- Supplied as complete modules including back boxes
- Suitable for all PVC-U and aluminium dado and skirting trunking (excluding Sovereign Plus, Maxi, Sceptre and Series R)
- Suitable for bench trunking, powerpoles and posts
- Flush finish
- Twin sockets have dual earth entry



MT32 Prefabricated and modular wiring

For further information about our fully pre-wired, pre-tested and assembled accessories, please refer to page 144 in this section.



Standard colour

WH

WH: White

Options: optional colours and finishes are available but these may be subject to minimum quantity orders and longer lead times. For more information contact the Technical Team on 01424 856688.



13Amp 1 gang unswitched socket

code	pack
EUS1WH	1



13Amp DP 1 gang switched socket

code	pack
ESS1WH	1



13Amp DP 2 gang switched socket

code	pack
ESS2WH	1

Twin sockets are supplied with two earth terminals



13Amp DP 1 gang switched socket (front fix)

code	pack
ESS4WH	1



13Amp DP 2 gang switched socket (front fix)

code	pack
ESS3WH	1



13Amp 1 gang vertical mount switched socket

code	pack
ESS11WH	1

Note: for PowerPoles, Posts and trunking



Two way switch

code	rating	pack
E6S1WH	6 amp	1



DP switch with neon

code	rating	pack
E32DN1WH	32 amp	1



13Amp unswitched fused spur

code	pack
EUFS1WH	1



13Amp switched fused spur

code	pack
ESFS1WH	1



13Amp switched fused spur with neon

code	pack
ESFSN1WH	1



Accessory box spacer

code	size	pack
ES1WH	14mm	4

For use between accessory boxes

A range of voice and data plates that incorporate apertures to accommodate 6c and RJ45 outlets.

Product information

- Flush and surface mounting plates
- Standard 6c accessories with 22 x 37mm apertures

Standard colour
WH
WH: White

Options: optional colours and finishes are available but these may be subject to minimum quantity orders and longer lead times. For more information contact the Technical Team on 01424 856688.



Boxes with flush plates



Flush module

code	description	pack
EM116WH	1 x 6c	1



Flush module

code	description	pack
EM126WH	2 x 6c	1



Flush module

code	description	pack
EM236WH	3 x 6c	1



Flush module

code	description	pack
EM246WH	4 x 6c	1



Front fixing flush module

code	description	pack
EM316WH	1 x 6c	1



Front fixing flush module

code	description	pack
EM326WH	2 x 6c	1



Front fixing flush module

code	description	pack
EM436WH	3 x 6c	1



Front fixing flush module

code	description	pack
EM446WH	4 x 6c	1

Surface mount plates



*1 gang plate 1 way

code	description	pack
EP316WH	1 x 6c	10



*1 gang plate 2 way

code	description	pack
EP326WH	2 x 6c	10



*2 gang plate 4 way

code	description	pack
EP446WH	4 x 6c	5

*For use with accessory boxes shown on the next page
Plate depth 9mm

Components



Blank fascia

code	size	pack
FM93WH*	6c	1



Accessory box spacer

code	size	pack
ES1WH	14mm	4

For use between accessory boxes

Part M

1 and 2 gang box assemblies with contrasting coloured flush plates are available to comply with the requirements of Part M (DDA).



code	description	pack
ESPM1BU	1 gang - blue plate	1
ESPM1CH	1 gang - charcoal plate	1
ESPM1RD	1 gang - red plate	1
ESPM2BU	2 gang - blue plate	1
ESPM2CH	2 gang - charcoal plate	1
ESPM2RD	2 gang - red plate	1

142 | Accessory boxes

Power, voice and data accessories for trunking

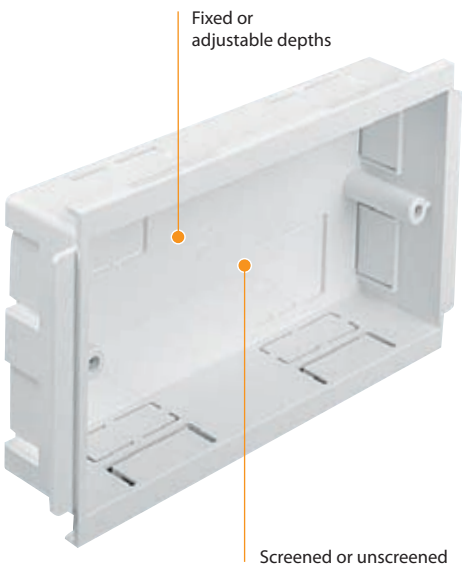
A large range of standard and screened options, including adjustable depth boxes that are particularly suitable for data or 4mm² power cable.

Product information

- Accept standard UK accessories
- Standard screw fixing centres
- Adjustable depth
- Part M compliance

Standard colour
WH
WH: White

Options: optional colours and finishes are available but these may be subject to minimum quantity orders and longer lead times. For more information contact the Technical Team on 01424 856688.



Boxes for UK accessories



1 gang accessory box

code	depth	pack
ESSB1WH	30mm	20



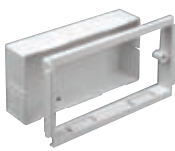
2 gang accessory box

code	depth	pack
ESSB2WH	30mm	10



1 gang adjustable depth box

code	depth	pack
EAB1WH	32 – 50mm	10



2 gang adjustable depth box

code	depth	pack
EAB2WH	32 – 50mm	5



1 gang accessory box *Screened

code	depth	pack
ESSB1SWH	30mm	20

*Screened boxes supplied complete with earth terminal



2 gang accessory box *Screened

code	depth	pack
ESSB2SWH*	30mm	10

*Screened boxes supplied complete with earth terminal



1 gang accessory plate

code	pack
ESSP1WH	10



2 gang accessory plate

code	pack
ESSP2WH	5

1 gang screened accessory box

code	depth	pack
ESSB1SWH*	30mm	1

1 gang screened adjustable box

code	depth	pack
EAB1SWH*	32 – 40mm	1

*Supplied complete with earth terminal

Part M

1 and 2 gang box assemblies with contrasting coloured flush plates are available to comply with the requirements of Part M (DDA).



code	description	pack
ESPM1BU	1 gang - blue plate	1
ESPM1CH	1 gang - charcoal plate	1
ESPM1RD	1 gang - red plate	1
ESPM2BU	2 gang - blue plate	1
ESPM2CH	2 gang - charcoal plate	1
ESPM2RD	2 gang - red plate	1

A range of trunking accessory boxes and mounting plates that accept international standard accessories

Product information

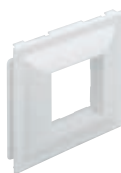
- MTOP10 and 20 and ETOP10, 20 and 30 plates accept Legrand's 45mm range of outlets
- MTOP11 and 21 and ETOP11, 21 and 31 plates are for Ave sockets
- ETOP180 accepts standard US and international outlets
- ETOP faceplates can be inserted directly into any Marshall-Tufflex trunking that uses the LTL1 cover

Standard colour
WH
WH: White

Options: optional colours and finishes are available but these may be subject to minimum quantity orders and longer lead times. For more information contact the Technical Team on 01424 856688.



ETOP faceplates can be inserted directly into LTL1 covers without the need for an accessory box



1 gang 45mm accessory plate

code	aperture	pack
ETOP10WH	45 x 45mm	20
ETOP11WH	50 x 45mm	20



2 gang 45mm accessory plate

code	aperture	pack
ETOP20WH	90 x 45mm	15
ETOP21WH	100 x 45mm	10



3 gang 45mm accessory plate

code	aperture	pack
ETOP30WH	135 x 45mm	10
ETOP31WH	150 x 45mm	10



Duplex 83.5mm accessory plate

code	depth	pack
ETOP180WH	2mm	15



1 gang surface mount outlet plate

code	Aperture	pack
MTOP10WH	45 x 45mm	30
MTOP11WH	50 x 45mm	30



2 gang surface mount outlet plate

code	Aperture	pack
MTOP20WH	90 x 45mm	20
MTOP21WH	100 x 45mm	20

MTOP faceplates

- 1 gang plates require ESSB1 boxes.
2 gang plates require ESSB2 boxes.

MT32 Prefabricated and modular wiring

For further information about our fully pre-wired, pre-tested and assembled accessories, please refer to page 144 in this section.



1 gang schuko accessory box

code	depth	pack
ESSBU1WH	40mm	10



2 gang schuko accessory box

code	depth	pack
ESSBU2WH	40mm	5



Box for accessory plates

code	depth	description	pack
ETOB10WH	34mm	for ETOP10 plate if required	1
ETOB20WH	34mm	for ETOP20 plate if required	1
ETOB30WH	34mm	for ETOP30 plate if required	1
ETOB180WH	34mm	for ETOP180 plate in USA	1

MT32 modular system for the installation of power within perimeter trunking. A range of pre-wired, tested and assembled interconnecting leads and accessory modules incorporating the Marshall-Tufflex compact 32Amp connector.

Product information

- 32Amp rated system
- Available as LSOH 3 core 2.5mm² flex system or as 4.0mm² singles system specification that meets the requirement for high integrity earthing
- Suitable for ring and radial circuits
- Circuit testing only required on completion of final layout
- Zero harm – no cutting required on site
- Reduced health & safety risk
- Zero waste on site

Standard colour
WH
WH: White



Pre-wired accessories

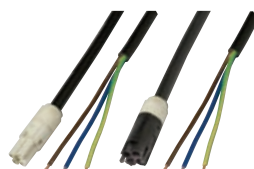


Extension cable 2.5mm²

code	length	pack
AA3330	0.5m	1
AA3331	1.0m	1
AA3332	1.5m	1
AA3333	3.0m	1
AA3335	5.0m	1

Extension cable 4.0mm²

code	length	pack
AA3350	0.5m	1
AA3351	1.0m	1
AA3352	1.5m	1
AA3353	3.0m	1
AA3355	5.0m	1

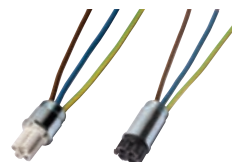


Connection cable free end 2.5mm²

code	length	pack
AA3732 (male)	1.5m	1
AA3532 (female)	1.5m	1

Connection cable free end 4.0mm²

code	length	pack
AA3752 (male)	1.5m	1
AA3552 (female)	1.5m	1



*Male and female adaptors 2.5mm²

code	length	pack
AA7211 (male)	220mm	1
AA7212 (female)	220mm	1

*Male & female adaptors 4.0mm²

code	length	pack
AA7251 (male)	220mm	1
AA7252 (female)	220mm	1

For adapting distribution board to modular system
Note: to fit 20mm knockout

*MT32 Connectors

The description 'male' (white) and 'female' (black) does not refer to the connector pins but describes and identifies the moulded connector housings.

For further information please contact our Technical Team on 01424 856688.



*Adaptor cables 2.5mm²

code	length	pack
AA8901 (male/male)	0.5m	1
AA8902 (female/female)	0.5m	1

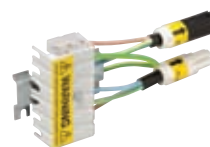
Required for ring circuit



*Adaptor cables 4.0mm²

code	length	pack
AA8951 (male/male)	0.5m	1
AA8952 (female/female)	0.5m	1

Required for ring circuit



*Terminal block

code	size	pack
AA6510 (female/male)	2.5mm ²	1
AA6520 (female/male)	4.0mm ²	1



Tee/Splitter – F/MM 2.5mm²

code	pack
AA7112	1

Tee/Splitter – F/MM 4.0mm²

code	pack
AA7115	1

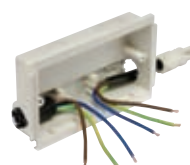


Pre-wired accessory 2.5mm²

code	size	pack
AA6121	1 gang	1
AA6221	2 gang	1

Pre-wired accessory 4.0mm²

code	size	pack
AA6151	1 gang	1
AA6251	2 gang	1



Pre-assembled outlet box 2.5mm²

code	size	pack
AA6321	1 gang	1
AA6421	2 gang	1

Pre-assembled outlet box 4.0mm²

code	size	pack
AA6351	1 gang	1
AA6451	2 gang	1