

UNDERFLOOR TO DESK SOLUTIONS

A comprehensive product range of flexible floor to desk cable management and prefabricated wiring systems developed to provide installations that are fast, easy and adaptable for contractor and client.

UNDERFLOOR TO DESK SOLUTIONS

UNDERFLOOR TO DESK SOLUTIONS

Marshall-Tufflex's underfloor to desk solutions incorporate a range of products for the distribution of power and data services from beneath raised floors and in-screed systems to desks.

A variety of wiring options are available, including the MT32 prefabricated technology that provides seamless connection all the way from the incoming feed to the desktop.

Underfloor to desk solutions provide a sustainable wiring option, offering zero waste systems which can be re-used and re-configured.

Powertrack

Standard and CE (Clean Earth) 63Amp powertrack.



Page
80

Raised floor boxes and grommets

3 and 4 compartment unwired and pre-wired boxes and grommets.



Page
82

In-screed system

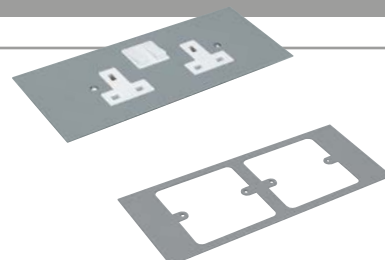
PVC-U or steel ducting with 3 and 4 compartment outlet boxes.



Page
85

Faceplates and accessories

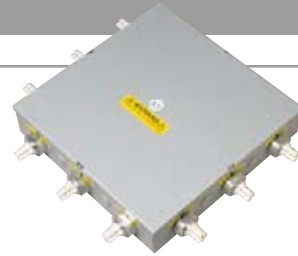
Accessories and accessory mounting plates for raised floor and in-screed floor outlet boxes.



Page
88

MT32 pre-wired underfloor power distribution

A 32Amp, interconnecting, fast-fit and flexible, pre-wired and tested underfloor to floor outlet box power distribution system.



Page
86

Power and data modules

A range of moulded pre-wired and assembled power units that can be used singly or linked by plug and play cable connectors.



Page
89

PowerPosts

An efficient way of managing services at island locations.



Page
96

Other pre-wired units

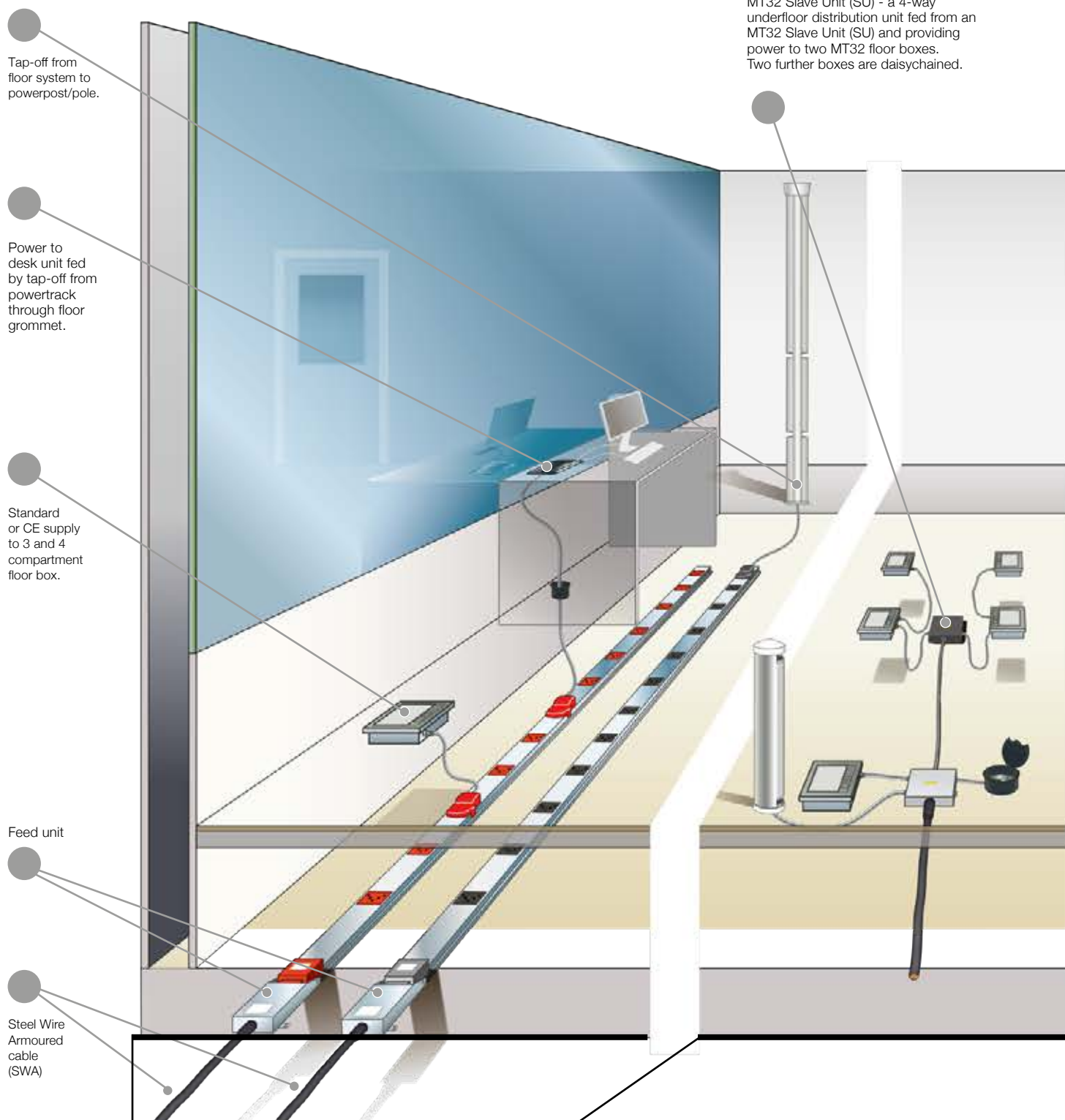
For other pre-wired units made to order to suit your specifications, please contact the Technical Team on +44 (0)1424 856688.



A selection of design layouts incorporating MT32 pre-wired technology and powertrack.

Please note: All products should be installed as per the manufacturer's installation instructions and as per current Wiring Regulations

UNDERFLOOR TO DESK SOLUTIONS



AREA 1

Using traditional powertrack and hard-wired floor boxes

- Standard and Clean Earth (CE) Powertrack
- 63Amp rating

AREA 2 – MT32 PRE-WIRED AND RECONFIGURABLE INTERCONNECTING SYSTEMS

Using MT32 Slave Unit (SU)

- Radial or daisy chain options for Standard and CE Systems
- 32Amp rating

MT32 Through and terminal boxes servicing independent zones.

Master distribution unit (MDU) feeding 9 floor boxes.

MT32 Through box.

Tap-off from powertrack gives direct feed through a floor grommet via a RCBO to a power and data module.

MT32 Terminal Box

Feed unit

SWA

AREA 3 – MT32 PRE-WIRED AND RECONFIGURABLE INTERCONNECTING SYSTEMS

Using MT32 Slave Unit (SU)

- Radial or daisy chain options for Standard and CE Systems 32Amp rating

AREA 4 – A COMBINATION OF powertrack AND MT32

Using 63Amp Standard or CE Powertrack with the MT32 32Amp Underfloor Distribution system.

- A combination that permits greater floor coverage 32Amp rating

A range of 63Amp powertrack complete with integral mounting brackets and pre-assembled end caps and couplers for ease of installation.



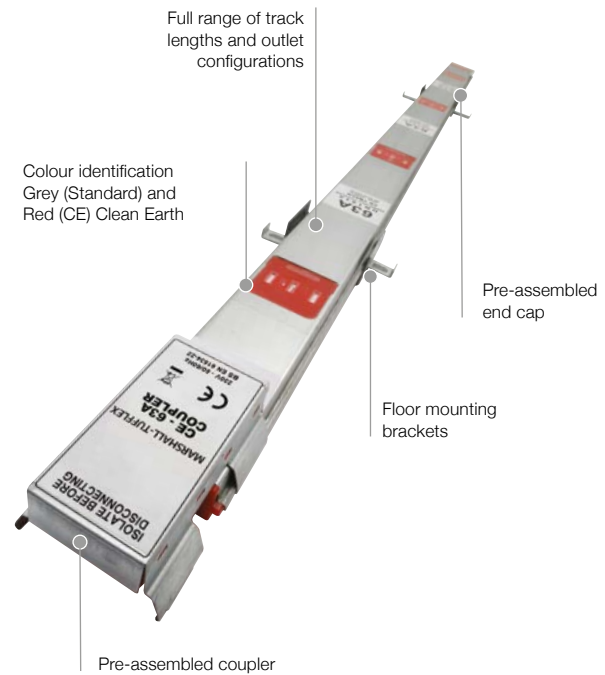
Product information

- Each length of track comes complete with pre-assembled coupler, end cap and floor mounting brackets.
- Maximum 63Amp rating
- Tap-offs are key and colour coded for Standard and CE (Clean Earth)
- Tap-offs are 32Amp rated or fused at 13Amp
- Adhesive dust covers protect outlets
- Compatible with MT32 pre-wired floor boxes



Powertrack and fittings are independently tested by Intertek

Identification	
Standard	CE
Standard: Grey CE (Clean Earth): Red	



To calculate powertrack lengths required for different floor layouts refer to table on opposite page.

Powertrack Standard



code	length	Number of outlets	pitch (mm)	pack
UN1112	1.2m	4	300	2
UN1118	1.8m	6	300	2
UN1114	2.4m	8	300	2
UN1116	3.6m	12	300	2

Powertrack CE (Clean Earth)



code	length	Number of outlets	pitch (mm)	pack
UN1212	1.2m	4	300	2
UN1218	1.8m	6	300	2
UN1214	2.4m	8	300	2
UN1216	3.6m	12	300	2

p259

Technical Information

Standard
Rated current 63Amp

Low Noise (CE)
Rated current 63Amp


Feed unit	Interlink		Interlink		Tap-off units		Tap-off units		Tap-off units		Tap-off units	
Female	Length	1.2m	Length	2.4m	Unfused 32Amp	Fused 13Amp	Unfused 32Amp	Fused 13Amp	Unfused 32Amp	Fused 13Amp	Unfused 32Amp	Fused 13Amp
Pack 1	Pack 1	Pack 1	Pack 1	Pack 1	Length 3m	Length 3m	Length 5m	Length 5m	Length 5m	Length 5m	Length 5m	Length 5m
					Pack 1	Pack 1	Pack 1	Pack 1	Pack 1	Pack 1	Pack 1	Pack 1
UN3100	UN5102	UN5104	UN7113	UN7123	UN7115	UN7125						
UN3200	UN5202	UN5204	UN7213	UN7223	UN7215	UN7225						

Other configurations of tap-off units including fuse options and conduit lengths up to 10m are available on request.

All tap-off units comply with 17th Edition Wiring Regulations Section 543 (High Integrity Earthing).

Powertrack – run length component chart

To determine the number and size of track required for a given area, select your total run length (in metres) from the left hand column, then find the correct track combinations along that row.

Total run in metres	Track lengths required				Total run in metres	Track lengths required					
3.6	3.6				12.6	3.6	3.6	3.6	1.8		
4.2	1.8	2.4			13.2	3.6	3.6	3.6	2.4		
4.8	2.4	2.4			13.8	3.6	3.6	3.6	1.8	1.2	
5.4	3.6	1.8			14.4	3.6	3.6	3.6	3.6		
6.0	3.6	2.4			15.0	3.6	3.6	3.6	2.4	1.8	
6.6	2.4	2.4	1.8		15.6	3.6	3.6	3.6	3.6	1.2	
7.2	3.6	3.6			16.2	3.6	3.6	3.6	3.6	1.8	
7.8	3.6	2.4	1.8		16.8	3.6	3.6	3.6	3.6	2.4	
8.4	3.6	3.6	1.2		17.4	3.6	3.6	3.6	3.6	1.8	1.2
9.0	3.6	3.6	1.8		18.0	3.6	3.6	3.6	3.6	3.6	
9.6	3.6	3.6	2.4		18.6	3.6	3.6	3.6	3.6	2.4	1.8
10.2	3.6	3.6	1.8	1.2	19.2	3.6	3.6	3.6	3.6	3.6	1.2
10.8	3.6	3.6	3.6		19.8	3.6	3.6	3.6	3.6	3.6	1.8
11.4	3.6	3.6	2.4	1.8							
12.0	3.6	3.6	3.6	1.2							

We recommend that no single run of Powertrack exceeds 20 metres.

A high quality range of raised floor boxes to provide power and data to desks within the modern office environment. Available as standard or heavy duty versions, boxes are supplied with dividers for quick and easy configuration as either a 3 or 4 compartment box.

Designed with quality in mind, the standard support plate is 3mm thick and allows for high traffic levels. In the case of very heavy traffic a robust steel sub-frame can be used to support the lid. The sub-frame doesn't restrict space for wiring and accessories and also allows for fine adjustments to be made to accommodate uneven flooring.



Designed and manufactured to

BS EN 61534-22:2009
BS EN 60670-1:2005
BS EN 60670-23:2008
BS EN 50085-1:2005
BS EN 50085-2-2:2008

Standard finish
GY
GY: Grey RAL7011 (floor box trim)



Barrel lock option for extra security



Optional steel sub-frame



Snap-in retainer guides

Reversible & self closing lid



Matching galvanised steel accessory plates

MT32 pre-wired option

Dividers to create 3 or 4 compartment options

p261

Technical Information

Product information

- Standard depth 83mm
- Supplied with dividers to create 3 or 4 compartment box
- Two earth fixing points for flexible positioning of sockets
- 3mm thick medium load plate
- Steel sub-frame option for heavy traffic and fine adjustment to allow for uneven flooring
- Supplied with two snap-in cable retainers/guides
- Grey trim as standard
- Cut-out within lid for carpet or carpet tiles up to 6mm
- Reversible lid

- Supplied with metal screws to attach trim to box for a secure fix
- Fixings are pre-punched for quick and easy installation
- Barrel lock option available for extra security
- RCD option
- Self closing lid for extra safety and security
- Pre-wired option available with MT32 Connectors
- Pre-wired boxes with tap-off
- Heavy duty steel galvanized conduit (BS EN 61386-23:2004+A11:2010)



Other options

- Steel lid & trim option (UMLD3) for even greater strength and durability
- Lid (UMLD1) available separately
- Replacement cable flap (UMCB1) available separately
- Replacement screw pack (UMSC1) available separately



3 compartment standard floor box (terminal)
357 x 257 x 83mm

code	description	pack
UM1010	1 x 2 gang Std	1
UM1020	2 x 2 gang Std	1
UM1030	3 x 2 gang Std	1
UM1110	1 x 2 gang CE	1
UM1120	2 x 2 gang CE	1
UM1130	3 x 2 gang CE	1



3 Compartment standard floor box (through)
357 x 257 x 83mm

code	description	pack
UM5210	1 x 2 gang Std	1
UM5220	2 x 2 gang Std	1
UM5230	3 x 2 gang Std	1
UM5211	1 x 2 gang CE	1
UM5221	2 x 2 gang CE	1
UM5231	3 x 2 gang CE	1



4 compartment standard floor box (terminal)
357 x 257 x 83mm

code	description	pack
UM5010	1 x 2 gang Std	1
UM5020	2 x 2 gang Std	1
UM5030	3 x 2 gang Std	1
UM5110	1 x 2 gang CE	1
UM5120	2 x 2 gang CE	1
UM5130	3 x 2 gang CE	1



4 Compartment standard floor box (through)
357 x 257 x 83mm

code	description	pack
UM5610	1 x 2 gang Std	1
UM5620	2 x 2 gang Std	1
UM5630	3 x 2 gang Std	1
UM5611	1 x 2 gang CE	1
UM5621	2 x 2 gang CE	1
UM5631	3 x 2 gang CE	1



3 compartment standard pre-wired box with 3m tap-off
357 x 257 x 83mm

code	description	pack
UPW400	1 x 2 gang Std	1



3 compartment CE pre-wired box with 3m tap-off
357 x 257 x 83mm

code	description	pack
UPW405	1 x 2 gang CE	1



4 compartment standard pre-wired box with 3m tap-off
357 x 257 x 83mm

code	description	pack
UPW410	1 x 2 gang Std	1



4 compartment CE pre-wired box with 3m tap-off
357 x 257 x 83mm

code	description	pack
UPW415	1 x 2 gang CE	1



Tap-off (Standard) to MT32 connector

code	length	rating	pack
UN8113	3m	32Amp unfused	1
UN8115	5m	32Amp unfused	1
UN8123	3m	13Amp fused	1
UN8125	5m	13Amp fused	1



Tap-off (Clean Earth) to MT32 connector

code	length	rating	pack
UN8213	3m	32Amp unfused	1
UN8215	5m	32Amp unfused	1
UN8223	3m	13Amp fused	1
UN8225	5m	13Amp fused	1

MT32 Connectors

The description 'male' (white) and 'female' (black) does not refer to the connector pins but describes and identifies the moulded connector housings. For further information please contact our Technical Team on +44 (0)1424 856688.

**Empty floor box**

code	description	pack
UM1000	Plastic lid & trim	1
UM1500	Steel lid & trim	1

**Contractor floor box**

code	description	pack
UM1430	Plastic lid/trim with plate to accept 1 x 2 gang accessory	1

**Sub-frame assembly**

code	pack
UMSF1	1

**Lock kit**

code	pack
UMLK1	1

**Raised floor lid assembly**

code	description	pack
UMLD1	Plastic	1
UMLD3	Steel	1

**Replacement screw pack**

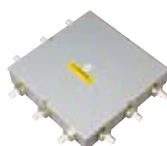
code	pack
UMSC1	1

**Replacement cable flaps pack**

code	pack
UMCB1	1

**Slave unit (SU) 32Amp rating 100x100x55mm**

code	description	pack
UM6100	4 way Std	1
UM6101	4 way CE	1

**Master distribution unit (MDU) 32Amp rating 260 x 260 x 55mm**

code	description	pack
UM6200	9 way Std	1
UM6201	9 way CE	1

**Floor grommet**

code	description	pack
UTG1BK	without foam insert	1
UTG1GY	without foam insert	1

**Floor grommet**

code	description	pack
UTG2BK	with foam insert	1
UTG2GY	with foam insert	1

**Floor power grommet**

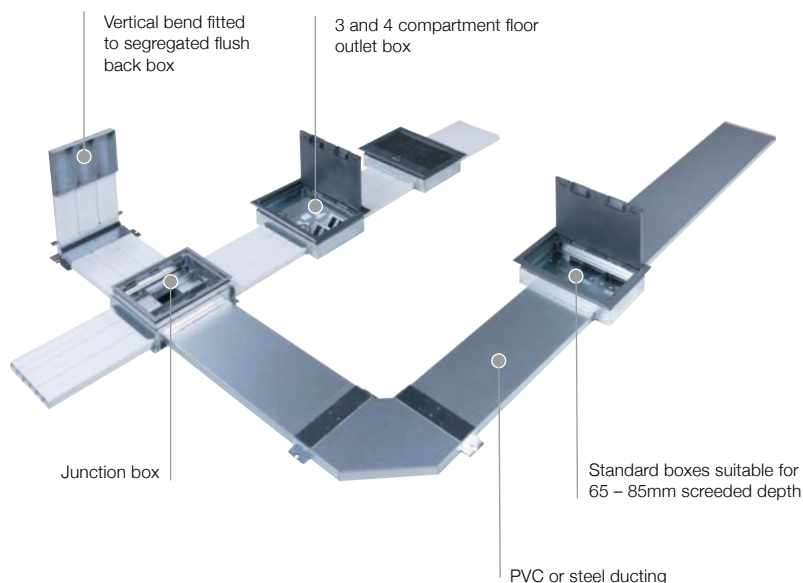
code	description	pack
UPG1BK	with foam insert	1
UPG1GY	with foam insert	1

Please note the floor box grommets are available in black BK (RAL9004) and grey GY (RAL7037).

A range of floor outlet boxes, fittings and plates in galvanised steel, with choice of PVC-U or steel ducting designed to be positioned within screed flooring.

Product information

- 3 and 4 compartments (boxes come with extra divider to make 4 compartments)
- Suitable for 65-85mm screed depth
Boxes for deeper floor screed available on request
- Box tray lid suitable for standard 6mm floor finishes
- For advice on box tray lids for non-standard floor finishes please contact our Technical Team
- Adjustable for box trim height
- Grey moulded carpet trim for floor outlet boxes
- Steel trims with various finishes available
- Universal junction box with integral, fully-reversible cable segregation



Standard floor box trim

GY

GY: Grey
RAL7011 (floor box trim)

Other trim finishes: Floor boxes can be provided with a variety of trim finishes such as brass, stainless steel and painted colours. For further information please contact the Technical Team on +44 (0)1424 856688.

Basic components



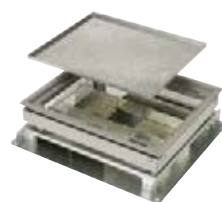
**Floor outlet box
3 and 4 compartment**

code	size	pack
USF32	357 x 257mm	1



Floor box lid assembly

code	description	pack
UMLD1	Plastic	1
UMLD3	Steel	1



**Universal junction box
(excluding adaptors)**

code	size	pack
USJ3	269 x 234mm	1



**Twin section PVC-U duct
(three ducts required per run)**

code	size	pack
MTU125	75 x 25mm	8 x 3m

Please see page 88 for the full range of accessory plates



3 Compartment steel duct

code	description	pack
USFT25	225 x 25mm	1 x 2.5m



Blank end

code	description	pack
USFB1	3 x 20mm KO	1
USFB25	6 x 25mm KO	1



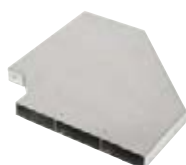
Adaptor

code	pack
USFA1	1



Connector

code	pack
USFC1	1



**Flat bend
(excluding connector)**

code	description	pack
USFF1	steel	1
HFP125BK	PVC-U	1



**Vertical bend
(excluding connector)**

code	description	pack
USFV1	steel	1
HVP125	PVC-U	1



Steel screeding plate

code	pack
USFSP1	1

Note: Used in place of box lid when screeding

Floor materials

Marshall-Tufflex can supply floor outlet boxes and junction boxes that are suitable for different floor materials, such as marble, stone or wood, or where a higher IP rating is required. For more information on these, please contact our Technical Team on +44 (0)1424 856688.

p262

Technical
Information

MT32 pre-wired underfloor distribution is a prefabricated wiring system that incorporates 32Amp plug and play connector technology. The system provides a range of pre-wired, pre-tested products which can be used alone or in conjunction with powertrack, desk modules and other pre-wired systems to accommodate various underfloor layout options.



Product information

- Distribution from powertrack supply
- 32Amp power distribution
- Standard and CE systems
- Greater scope in layout design
- Wider range of floor distribution
- Economical and practical for large or high density floor areas
- Designs, dimensions and cable capacities to meet the latest BS EN ISO standards and accommodate all building designs and construction parameters
- Accessory plates manufactured from galvanised steel to match floor boxes

Plate dimensions

- 3 compartment 185 x 95mm
- 4 compartment 185 x 71mm



Standard finish

GY

GY: Grey
RAL7011 (floor box trim)

MT32 Connectors

The description 'male' (white) and 'female' (black) does not refer to the connector pins but describes and identifies the moulded connector housing. For further information please contact our Technical Team on +44 (0)1424 856688.

Components



Slave unit (SU)
32Amp rating
100 x 100 x 55mm

code	description	pack
UM6100	4 way Std	1
UM6101	4 way CE	1

MT32 Four compartment floor boxes

Terminal: Refer to page 83



Floor box – through 3 compartment
357 x 257 x 83mm

code	description	pack
UM5210	1 x 2 gang Std	1
UM5220	2 x 2 gang Std	1
UM5230	3 x 2 gang Std	1
UM5211	1 x 2 gang CE	1
UM5221	2 x 2 gang CE	1
UM5231	3 x 2 gang CE	1



Floor box – terminal 3 compartment
357 x 257 x 83mm

code	description	pack
UM1010	1 x 2 gang Std	1
UM1020	2 x 2 gang Std	1
UM1030	3 x 2 gang Std	1
UM1110	1 x 2 gang CE	1
UM1120	2 x 2 gang CE	1
UM1130	3 x 2 gang CE	1



Interconnecting conduit assembly
To MDU, SU, FBDU and floor boxes

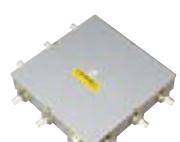
code	length	description	pack
UC3353	3m	Std	1
UC3355	5m	Std	1
UC4453	3m	CE	1
UC4455	5m	CE	1



***Male & female adaptors 220mm tail**
- fits 20mm knockout

code	description	pack
UA7234	3 pole (male) white	1
UA7244	4 pole (male) white	1
UA7134	3 pole (female) black	1
UA7144	4 pole (female) black	1

*For adapting additional equipment and floor boxes to modular system.



Master distribution unit (MDU) 32Amp rating
260 x 260 x 55mm

code	description	pack
UM6200	9 way Std	1
UM6201	9 way CE	1



Tap-off (Standard) to MT32 connector

code	length	rating	pack
UN8113	3m	32Amp unfused	1
UN8115	5m	32Amp unfused	1
UN8123	3m	13Amp fused	1
UN8125	5m	13Amp fused	1

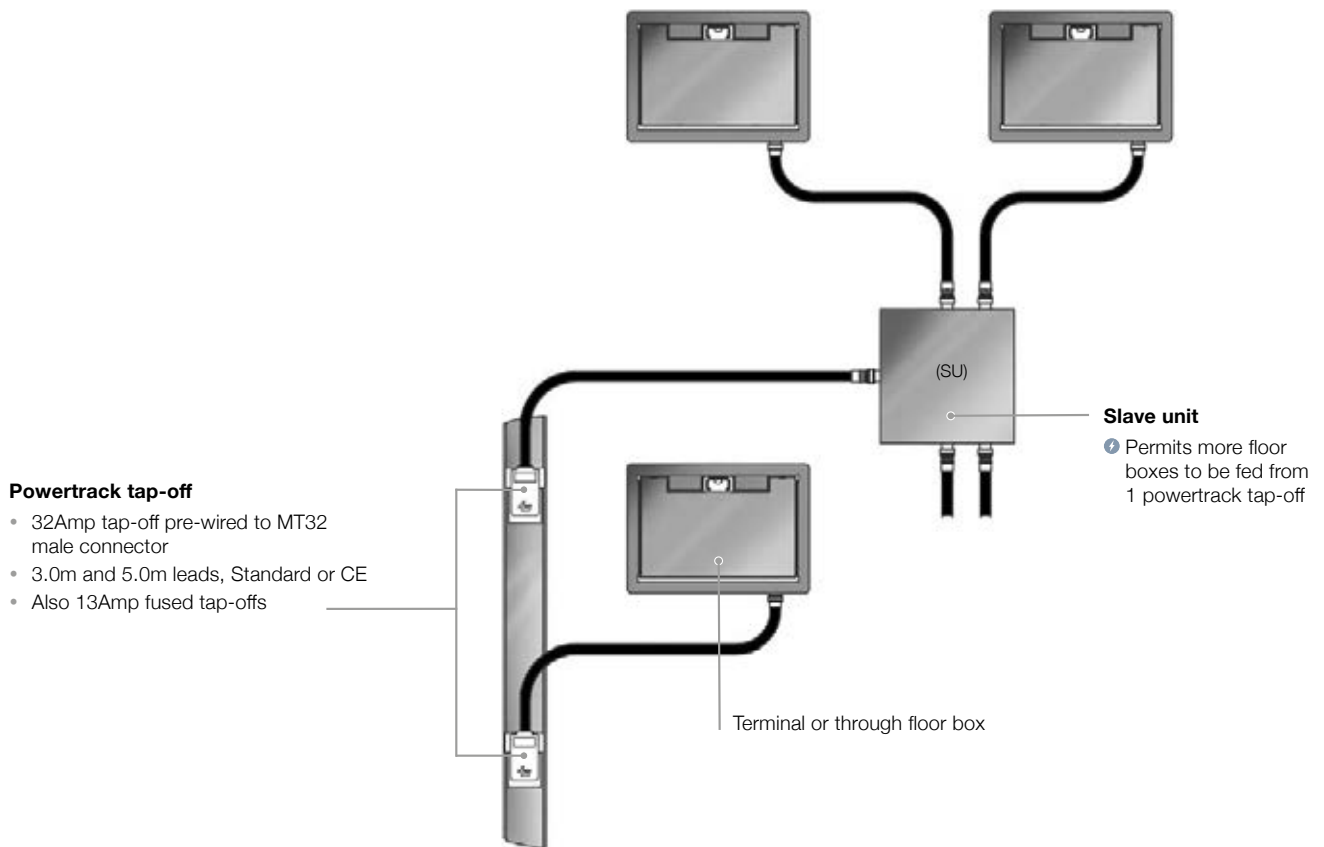


Tap-off (Clean Earth) to MT32 connector

code	length	rating	pack
UN8213	3m	32Amp unfused	1
UN8215	5m	32Amp unfused	1
UN8223	3m	13Amp fused	1
UN8225	5m	13Amp fused	1

Suggested layout

Should powertrack be the preferred method of underfloor power supply, then combining powertrack with MT32's interlinked through floor boxes and/or slave units will provide a far greater reach of floor area than can be achieved using powertrack alone.





13Amp 2 gang DP/TE switched socket

code	description	pack
UP651	3 comp	1
UP751	4 comp	1



13Amp 2 gang DP/TE switched socket clean earth

code	description	pack
UP653	3 comp	1
UP753	4 comp	1



Double plate with 2 x 13Amp 2 gang switched socket

code	description	pack
UP751D	4 comp	1
UP753D	4 comp CE	1

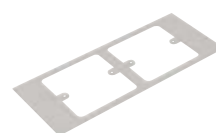


Plate to accept 2 x 1 gang accessory (M3.5 x 60.3mm)

code	description	pack
UP633	3 comp	1

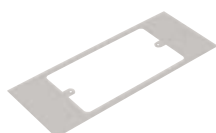


Plate to accept 1 x 2 gang accessory (M3.5 x 120.3mm)

code	description	pack
UP632	3 comp	1



Plate to accept 1 x 1 gang accessory

code	description	pack
UP631	4 comp	1



Plate to accept 1 x 1 gang accessory

code	description	pack
UP731	4 comp	1

Plate dimensions

3 compartment = 185 x 95mm
4 compartment = 185 x 71mm

Plate material

Plates are manufactured from plain galvanised steel to match floor boxes.



Plate to accept 2 x 1 gang accessory (M3.5 x 60.3mm)

code	description	pack
UP733	4 comp	1

Accessory overlaps adjacent plates

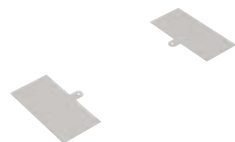


Plate to accept 1 x 2 gang accessory (M3.5 x 120.3mm)

code	description	pack
UP732	4 comp	1

Accessory overlaps adjacent plates



13Amp 2 gang RCD unswitched socket

code	description	pack
UP660	3 comp Std	1
UP663	3 comp CE	1



Blank plate

code	description	pack
UP621	3 comp	1
UP721	4 comp	1



Euro plate 2 gang

code	description	pack
UP615	3 comp	1
UP715	4 comp	1

Adaptor plate required
2 x 50mm x 50mm cut outs
Note: Adaptor plates are not supplied by Marshall-Tufflex

International accessory plates

It is advisable to use MTOP plates for conversion to a range of continental sockets. Please refer to page 232 for more information.



Data/voice plate 6 x RJ45

code	description	pack
UP612	3 comp	1
UP712	4 comp	1

6 x 37mm x 22mm cut outs



Data/voice plate 4 x RJ45

code	description	pack
UP610	3 comp	1
UP710	4 comp	1

4 x 37mm x 22mm cut outs



Data wave plate 4 x RJ45

code	description	pack
UP617	3 comp	1

4 x 37mm x 22mm cut outs



Data wave plate 2 x RJ45

code	description	pack
UP717	4 comp	1

2 x 37mm x 22mm cut outs

A range of surface mounted power and data modules for use with office furniture.



Product information

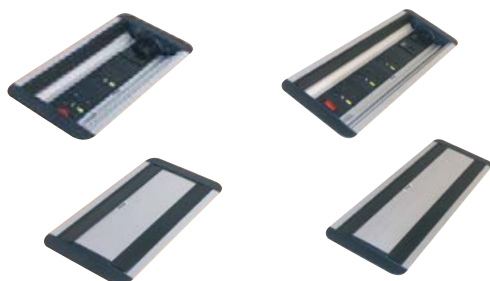
- Flip up units - flush finish when in use
- Surface units - desk mounted
- Desk grommets
- Fed from wall trunking or floor boxes
- Various switching and fusing options available
- Individually fused
- Master switch option
- RCD and MCB protection available



Various configurations of power and data outlets

Aluminium body

Surface units



Flip-up unit with master switch and individually fused sockets

code	description	pack
FDMF002BK	2 gang	1
FDMF007BK	4 gang	1
FDMF008BK	5 gang	1

Flip-up unit with master switch, data outlets and individually fused sockets

code	description	pack
FDMF013BK	2 gang + 1 Cat 5e 1	
FDMF014BK	3 gang + 2 Cat 5e 1	
FDMF015BK	4 gang + 2 Cat 5e 1	



Curved surface unit with master switch and individually fused sockets

code	description	pack
FDMC003BK	2 gang	1
FDMC005BK	3 gang	1
FDMC009BK	4 gang	1
FDMC011BK	6 gang	1



Curved surface unit with master switch, data outlets and individually fused sockets

code	description	pack
FDMC012BK	2 gang + 1 Cat 5e 1	
FDMC013BK	3 gang + 2 Cat 5e 1	
FDMC014BK	4 gang + 3 Cat 5e 1	
FDMC015BK	4 gang + 4 Cat 5e 1	
FDMC016BK	6 gang + 4 Cat 5e 1	



13Amp in-feed power cable Wieland connector

code	length	pack
DM8301	1m	1
DM8302	2m	1
DM8303	3m	1

Please note that these products come with 2 x adjustable desk clamps (to suit between 13 - 40mm)



Desk grommet

code	diameter	pack
DG1BK	92mm	1

p263

Technical
Information

A range of power and data modules ideal for under desk mounting.

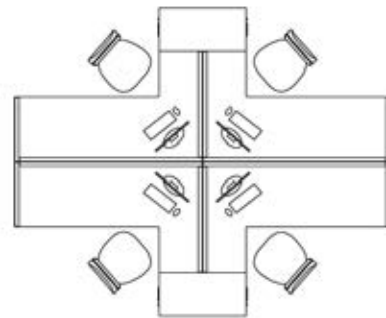
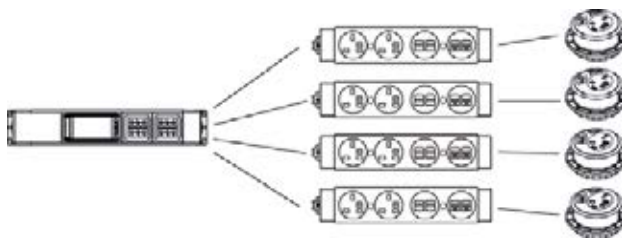


Product information

- High strength, flame retardant polycarbonate moulded modules
- Aluminium RCBO units
- Aluminium power modules
- Can be fed from wall trunking, floor boxes, grommets or powerpoles
- For single use or modules can be interlinked
- In-feed supply either by Wieland GST 18/3 connection or plug socket
- Unswitched individually fused 3.15Amp or 5Amp sockets
- 2 and 4 gang options plus the ability to link modules
- Polycarbonate power modules with twin USB points that charge up to 5 x faster than your standard PC USB port
- Desk units comply with BS 6396 for Electrical Systems in Office Furniture when powered from a plug socket outlet and with BS 7671 when powered from a power distribution network.
- RJ45 data sockets in Cat 5e, Cat 6 or blank configuration options



Our range of power modules and RCBOs can be integrated to deliver a complete system from underfloor to desk.



Power module 2G indv fused

code	description	pack
DM5001	3.15Amp	1
DM5003	5Amp	1

Power module 4G indv fused

code	description	pack
DM5002	3.15Amp	1
DM5004	5Amp	1



NEW



NEW



NEW



NEW

Power module 4G STD (Terminal) For use with up to 13Amp supply

code	description	pack
DM6003	3.15Amp	1
DM6005	5Amp	1

Power module 4G CE (Terminal) For use with up to 13Amp supply

code	description	pack
DM6009	3.15Amp	1
DM6010	5Amp	1

Power module 4G STD (Terminal) For use with up to 32Amp supply

code	description	pack
DM6002	3.15Amp	1
DM6004	5Amp	1

Power module 4G CE (Terminal) For use with up to 32Amp supply

code	description	pack
DM6007	3.15Amp	1
DM6008	5Amp	1

All modules are supplied with 20mm knockout for power input



NEW

**Power module 4G
STD & 13Amp tap-off**

code	description	pack
DM6013	3.15Amp 3m tap-off	1
DM6019	3.15Amp 5m tap-off	1
DM6015	5Amp 3m tap-off	1
DM6020	5Amp 5m tap-off	1



NEW

**Power module 4G
CE & 13Amp tap-off**

code	description	pack
DM6023	3.15Amp 3m tap-off	1
DM6029	3.15Amp 5m tap-off	1
DM6025	5Amp 3m tap-off	1
DM6030	5Amp 5m tap-off	1



NEW

**Power module 4G
STD & 32Amp tap-off**

code	description	pack
DM6012	3.15Amp 3m tap-off	1
DM6022	3.15Amp 5m tap-off	1
DM6014	5Amp 3m tap-off	1
DM6024	5Amp 5m tap-off	1



NEW

**Power module 4G
CE & 32Amp tap-off**

code	description	pack
DM6017	3.15Amp 3m tap-off	1
DM6027	3.15Amp 5m tap-off	1
DM6018	5Amp 3m tap-off	1
DM6028	5Amp 5m tap-off	1



**Module 2xpower 2xUSB
2xCat 5e**

code	description	pack
DM5030	3.15Amp	1
DM5033	5Amp	1



**Module 2xpower 2xUSB
2xCat 6**

code	description	pack
DM5031	3.15Amp	1
DM5034	5Amp	1



**Module 2xpower 2xUSB
2xblank**

code	description	pack
DM5032	3.15Amp	1
DM5035	5Amp	1

Desk Module USB

Power and Data Modules with Twin USB Fast Charger

With 5Amp output across two USB ports, our Power and Data Modules can simultaneously charge two devices at speeds comparable to, or faster than, the devices' own chargers.

- Fast charge 2 devices
- 5 Amps combined maximum output
- Up to 91% efficiency
- 5000+ USB insertion connections

The USB ports are designed to withstand the elements of a commercial environment with connectors built to withstanding over 5000 insertions.

This feature allows you to charge your devices faster, with far less power wastage through heat generation, and comply with the latest international standards on the efficiency of power supplies.



Aluminium RCBO16A/30mA units

**RCBO 1xGST18 Female & tap-off STD**

code	length	pack
DM5050	3m	1
DM5051	5m	1

**RCBO 1xGST18 Female & tap-off CE**

code	length	pack
DM5052	3m	1
DM5053	5m	1

**RCBO 4xGST18 Female & tap-off STD**

code	length	pack
DM5054	3m	1
DM5055	5m	1

**RCBO 4xGST18 Female & tap-off CE**

code	length	pack
DM5056	3m	1
DM5057	5m	1

**RCBO 1xGST18 Female**

code	pack
DM5058	1

**RCBO 4xGST18 Female**

code	pack
DM5059	1

Both modules supplied with 20mm knockout for power input

**GST18/3 F & 13A plug**

code	length	pack
DM8301	1m	1
DM8302	2m	1
DM8303	3m	1

**GST18/3 M/F lead**

code	length	pack
DM8502	1m	1
DM8503	1.5m	1
DM8504	3m	1

Wieland power cables