

S210[®] Connecting Block System

The Siemon S210 connection system provides superior Category 6 connecting block performance. The S210 block is the ideal for Voice over IP (VoIP) applications. It can be used to support existing cross-connects for standard phone systems today and enables upgrades to a Category 6 rated solution for a seamless network transition.

Section Contents

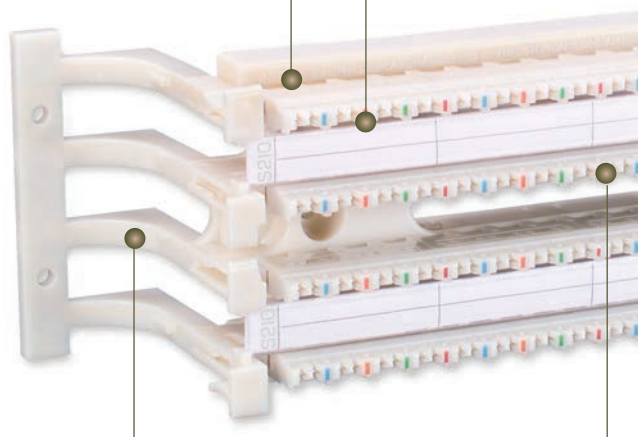
| | |
|---|------|
| S210 Field Termination Kits | 3.21 |
| S210 Field Terminated 19 Inch Panels | 3.22 |
| S210 Field Terminated 19 Inch Panels w/ Cable Managers | 3.22 |
| Vertically-Mounted S210 Field Termination Kits | 3.22 |
| S210 Tower Kits and Accessories | 3.22 |
| S210 Tower Field Termination Kits & Accessories | 3.23 |
| S210 Connecting Block | 3.24 |
| System 6 Cross Connect Wire | 3.24 |
| S110 [®] /210 Covers | 3.24 |
| Wall Mount S110/S210 Cable Managers | 3.25 |
| S100A2 Wire Manager | 3.25 |
| S210 Patch Plugs | 3.26 |
| S210 to MC [®] 6 Cable Assemblies and Designation Labels | 3.27 |

S210[®] Connection System

The Siemon S210 offers the best connecting block performance in the telecommunications industry. Its NEXT performance is so exceptional that it is essentially transparent when used as a consolidation point in a Category 6 channel.

Coloured Labels — Designation strip with interchangeable coloured labels can be mounted between each row of connecting blocks

Easy Termination — Utilises same termination practices as existing S110 product and is compatible with all single-position S110 termination tools as well as Siemon's S210 multi-pair termination tool



Stand-off Legs — Patented stand-off legs may be detached from the block before, during, or after installation on 64-pair version

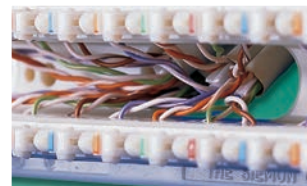
Compatibility — Utilises same wiring base footprint as standard S110[®] products to be fully compatible with existing S110 mounting and cable management solutions



Internal Crosstalk Barriers
Provide superior NEXT performance (13 dB NEXT margin over Category 6 specifications) via 360° pair isolation.



Pyramid[™] Wire Entry System
Separates paired conductors when lacing cables to simplify and reduce installation time.



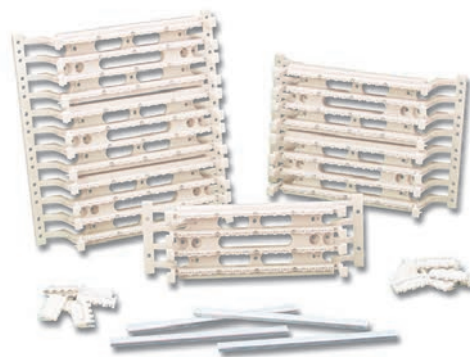
Patented Cable Access Openings
Allow cables to be routed through the rear of the block directly to the point of termination.

S210 Field Termination Kits

Complete S210 installation kits include S210 wiring blocks with detachable legs*, S210 connecting blocks, and label holders with white designation labels.

| Part # | Description |
|---------------------|---|
| S210AB2-64FT. | 64-Pair, S210 field termination kit height: 91.4mm (3.6 in.) width: 272mm (10.7 in.) depth: 82.8mm (3.3 in.) |
| S210AB2-128FT. | 128-Pair, S210 field termination kit height: 182.9mm (7.2 in.) width: 272mm (10.7 in.) depth: 82.8mm (3.3 in.) |
| S210AB2-192FT. | 192-Pair, S210 field termination kit height: 275mm (10.8 in.) width: 272mm (10.7 in.) depth: 82.8mm (3.3 in.) |

*Legs detachable on 64-pair version only.

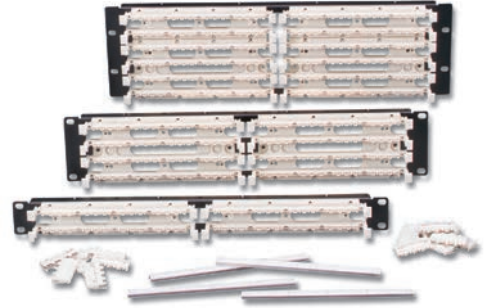


S210® Field Terminated 19 inch Panels

S210 panels allow wiring blocks to be mounted directly to a 19 inch rack or cabinet. Each panel includes the appropriate quantity of S210 connecting blocks, mounting hardware and label holders with white designation labels. Patented openings between rows allow horizontal cables to be routed from behind the panel and enter the block from the rear, helping to maintain cable jacket and twist up to the point of termination.

| Part # | Description |
|----------------------|--|
| S210DB2-64RFT. | 64-Pair, 19 inch S210 field termination kit, 1U |
| S210DB2-128RFT. | 128-Pair, 19 inch S210 field termination kit, 2U |
| S210DB2-192RFT. | 192-Pair, 19 inch S210 field termination kit, 3U |

Note: 1U = 44.5mm (1.75 in.)

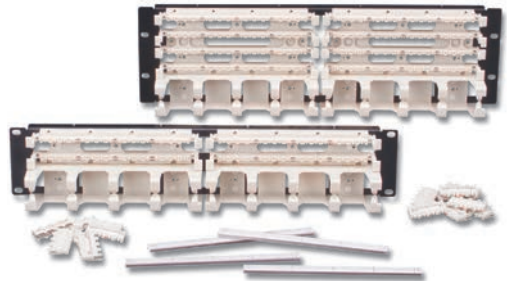


S210 Field Terminated 19 inch Panels with Cable Managers

| Part # | Description |
|----------------------|---|
| S210DB2-64RWM. | 64-Pair, 19 inch S210 field termination kit, 2U with cable managers and covers |
| S210DB2-128RWM. | 128-Pair, 19 inch S210 field termination kit, 3U with cable managers and covers |

Note: 1U = 44.5mm (1.75 in.)

Each kit includes adequate connecting blocks to fully populate panel.



Vertically Mounted S210 Field Termination Kits

These 32-pair or 48-pair S210 blocks can be mounted on the same S89B or S89D brackets that hold our S66™ blocks. The high density 48-pair kit provides Category 6 performance in the same footprint as a standard M1-50 66 block. Field-termination kits include the S210 connecting blocks, designation labels and label holders.

| Part # | Description |
|-----------------------|--|
| S210DB1-48FT-89. | 48-Pair S210 field termination kit on an 89-type retainer* |
| S210DB1-32FT-89. | 32-Pair S210 field termination kit on an 89-type retainer* |

**S89 Brackets are not included and must be ordered separately.*



S210DB1-48FT-89



S210DB1-32FT-89

S210® Tower Field Termination Kits

| Part # | Description |
|------------------------|--|
| S210MB2-192FT. | 192-Pair, S210 Tower field termination kit height: 406mm (16 in.), width: 216mm (8.5 in.), depth: 152mm (6 in.) |
| S210MB2-256FT. | 256-Pair, S210 Tower field termination kit height: 541mm (21.3 in.), width: 216mm (8.5 in.), depth: 152mm (6 in.) |
| S210MB2-320FT. | 320-Pair, S210 Tower field termination kit height: 676mm (26.6 in.), width: 216mm (8.5 in.), depth: 152mm (6 in.) |

Each kit includes adequate connecting blocks to fully populate tower.



Large-Scale Vertical Cable Managers

The S188 large scale vertical cable manager for the S110®/S210 Towers accommodates our quarter-turn RS-CH cable managers. With the RS-CH managers installed, additional vertical channels can be integrated into the main channel to segregate patch cables and cross-connect wire.

| Part # | Description |
|--------------------|---|
| S188-300 | Large-scale vertical cable manager for use with 192-pair S210 Tower height: 406mm (16 in.), width: 216mm (8.5 in.), depth: 152mm (6 in.) |
| S188-400 | Large-scale vertical cable manager for use with 256-pair S210 Tower height: 541mm (21.3 in.), width: 216mm (8.5 in.), depth: 152mm (6 in.) |
| S188-500 | Large-scale vertical cable manager for use with 320-pair S210 Tower height: 676mm (26.6 in.), width: 216mm (8.5 in.), depth: 152mm (6 in.) |



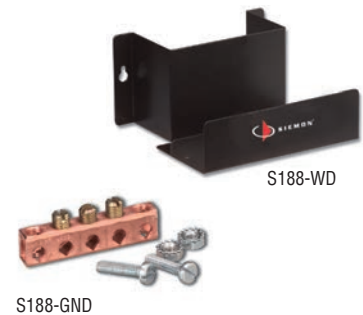
Small-Scale Vertical Cable Managers

| Part # | Description |
|-----------------------|---|
| S110M-WM-300. | Small-scale vertical cable manager, for use with 192-pair S210 Tower height: 406mm (16 in.), width: 76.2mm (3 in.), depth: 152mm (6 in.) |
| S110M-WM-400. | Small-scale vertical cable manager, for use with 256-pair S210 Tower height: 541mm (21.3 in.), width: 76.2mm (3 in.), depth: 152mm (6 in.) |
| S110M-WM-500. | Small-scale vertical cable manager, for use with 320-pair S210 Tower height: 676mm (26.6 in.), width: 76.2mm (3 in.), depth: 152mm (6 in.) |



S210 Tower Optional Accessories

| Part # | Description |
|--------------------|--|
| S188-WD | Metal duct for additional horizontal cable management at base of S210 Tower height: 114.3mm (4.5 in.), width: 215.9mm (8.5 in.), depth: 203.2mm (8 in.) |
| S188-GND | Ground kit consists of one, 3-position grounding busbar height: 9.0mm (0.35 in.), width: 50.8mm (2.0 in.), depth: 12.3mm (0.49 in.) |



S210[®] Connecting Block

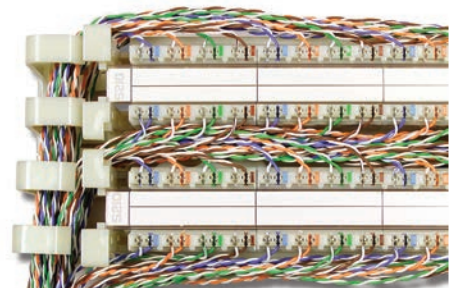
Siemon S210 blocks terminate 22 – 26 AWG (0.64mm – 0.40mm) solid or 7-strand wires. They also incorporate markings to designate tip and ring conductors, colour-coded pairs on each block and Siemon's patent-pending Pyramid™ wire entry system to expedite lacing of pairs.



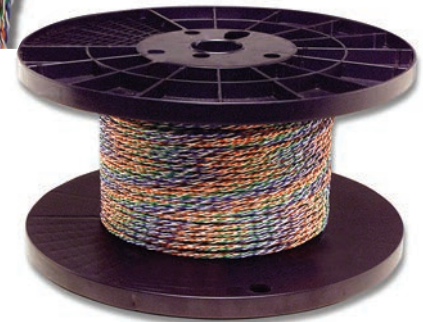
| Part # | Description |
|---------|-------------------------------|
| S210C-4 | 4-Pair, S210 connecting block |

System 6[®] Cross-Connect Wire

Siemon's System 6 cross-connect is ideal for cross-connect applications up to 5 metres (15 ft.). It can be used for System 6 installations using S210[®] wiring blocks.



| Part # | Description |
|-------------|--|
| CJ6-W4-1000 | Category 6, 4-pair, 24 AWG (0.05mm), solid cross-connect wire, pair colours blue / orange / green / brown, 305mm spool |



COMPLIANCE

- ISO/IEC 11801:2002 2nd Edition (Category 6)
- IEC 61156-5:2002 (Category 6)
- TIA-568-C.2 (Category 6)

CABLE CONSTRUCTION

- 0.5mm (0.02 in.) 24 AWG bare copper conductors
- 1.02mm (0.04 in.) insulation diameter nominal

S110[®]/S210 Covers

The Siemon Company S110/S210 covers are available in 50- and 100-pair sizes (32- and 64-pair for S210). The cover easily snaps on and off wiring blocks and S110/S210 cable managers, and enhances the appearance of the S110/S210 installation. Removable icon tabs provide colour-coding on the front for compliance with the ANSI/TIA/EIA-606-A administration standard.



| Part # | Description |
|-------------------|--|
| S110-CVR-50-(XX) | 50-Pair S110 cover/32-pair S210 cover |
| S110-CVR-100-(XX) | 100-Pair S110 cover/64-pair S210 cover |

Use (XX) to specify colour: 00 = Clear, 01 = Black, 20 = Ivory



Clear covers protect connections yet allow full viewing of circuits and individual station ID's.

Wall Mount S110®/S210® Cable Managers

The Siemon S110/S210 cable managers are the foundation of a series of cable management products that are designed to support S110 or S210 cross-connects and patch panel applications. They can be ordered individually for field assembly in wall-mount applications. The cable managers are manufactured with high-strength, flame-retardant thermoplastic, and have been designed for easy cable insertion or withdrawal. The 2 RMS cable manager provides additional capacity for high-density patching applications.



Cable Managers Without Legs

S110B1RMS.
1U white cable manager
without legs



S110B2RMS.
2U white cable manager
without legs



S110B1RMS-01.
1U black cable manager
without legs



S110B2RMS-01.
2U black cable manager
without legs



Cable Managers With Legs

S110A1RMS.
1U white cable manager
with legs



S110A2RMS.
2U white cable manager
with legs



S110A1RMS-01.
1U black cable manager
with legs



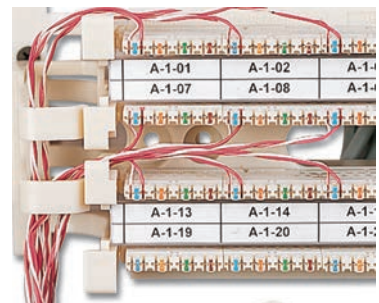
S110A2RMS-01.
2U black cable manager
with legs



Note: 1U = 44.5mm (1.75 in.)

S100A2 Wire Manager

The S100A2 wire manager snaps onto the legs of the S110 or S210 blocks/legs to provide a channel for routing cross-connect wire or patch cords. One S100A2 is designed to be used with each 100-/64-pair leg (2 for 200-/128-pair, 3 for 300-/192-pair) to allow space to access the wires. The S100A2 can also be mounted side-by-side. The outside edges are flared and tapered for smoother wire entry and exit and preventing damage to the conductor insulation.



| Part # | Description |
|--------------------|--|
| S100A2. | Snap-on S110/S210, wire manager, white |
| S100A2-01. | Snap-on S110/S210, wire manager, black |



S210[®] Patch Plugs

The S210 patch plug utilises internal pair isolation, pair-to-pair compensation and layered contacts to improve cross-talk performance so that the mated plug and connecting block far exceed Category 6 connecting hardware transmission requirements. The clear housing keeps the conductor colours/positions visible to aid matching termination positions on the other end.

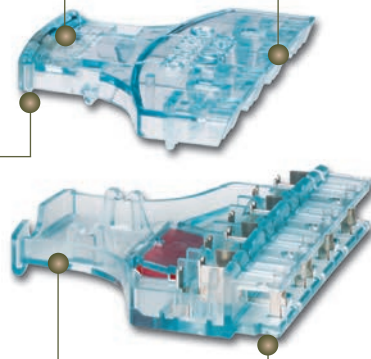
Proper Orientation — Directional arrow provided to assist in proper insertion orientation

Tapered Lacing — Enable easy lacing of pairs for quick field termination

Ergonomic Handle — Aids insertion and removal of patch plug

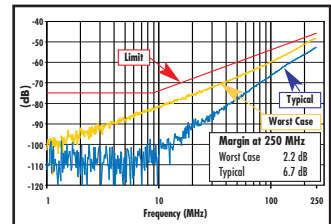
Clear Housing — Durable, flame-retardant, clear thermoplastic housing keeps conductors visible during and after termination

Polarisation — Each plug housing includes polarisation features to ensure proper orientation of the plug when connecting to the S210 block



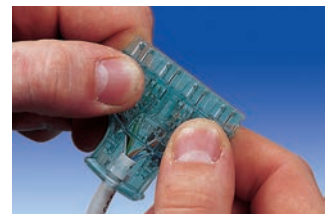
Field Installable

Terminates 24-26 AWG (0.40mm-0.51mm) solid or 7-strand twisted-pair cable.



NEXT Performance

The S210 4-pair plug provides unparalleled performance, with 6.7 dB NEXT (typical) and 2.2 dB NEXT (worst case) at 250 MHz.



Easy Field Termination

Simply snap the base and cover together to mass terminate all conductors.

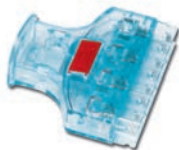
Technical Tip!

S210 to MC[®] 6 cable assemblies can be configured in the field. Siemon MC 6 modular cords can be purchased and cut in half. The cut end of the cord can then be field terminated to the S210P patch plug while the factory terminated and tested modular plug end remains undisturbed.

S210 patch plugs can be field-terminated to 23 – 26 AWG (0.40mm – 0.51mm) solid or 7-strand twisted-pair cable.

S210 Patch Plugs

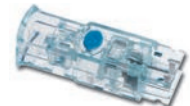
S210P4.....
4-Pair, field-terminated,
S210 patch plug



S210P2.....
2-Pair, field-terminated,
S210 patch plug



S210P1.....
1-Pair, field-terminated,
S210 patch plug



S210 Cable Assemblies

The S210 cable assemblies utilise Siemon's S210P4 patch plugs for easy and reliable connections between S210 termination fields. These assemblies use high performance stranded cable which exceeds Category 6 specifications and are 100% factory transmission tested to ensure optimum Category 6 channel performance. Coloured icons are available for colour-coding S210 plugs.

| Part # | Description |
|---------------------|--|
| S210P4-P4(XX)M..... | 4-Pair, double-ended, S210 stranded cable assembly, white jacket |
| S210P2-P2(XX)M..... | 2-Pair, double-ended, S210 stranded cable assembly, white jacket |
| S210P1-P1(XX)M..... | 1-Pair, double-ended, S210 stranded cable assembly, white jacket |

Use (XX) to specify cord length: 01 = 1m (3.3 ft.), 1.5 = 1.5m (5 ft.), 02 = 2m (6.6 ft.), 03 = 3m (9.8 ft.), 05 = 5m (16.4 ft.)

Custom lengths available upon request. Contact our Customer Service Department for more information.



S210[®] to MC[®] 6 Cable Assemblies

The S210 to modular cable assemblies combine Siemon's high performing plugs for patching network equipment to S210 connecting blocks or providing test access to S210 termination fields. The combination of plugs, high performance cable and 100% factory transmission testing ensures performance is compatible with Category 6 channel specifications.

| Part # | Description |
|----------------------|--|
| S210P4A4-(XX)M-(XX) | 4-Pair, S210P4 to MC 6 stranded cable assembly, colour matching jacket/boot, T568B, CMG |
| S210P4T4-(XX)M-(XX) | 4-Pair, S210P4 to MC 6 stranded cable assembly, colour matching jacket/boot, T568A, CMG |
| S210P2E2-(XX)M-B(XX) | 2-Pair, S210P2 to MC 6 stranded cable assembly, white jacket with coloured boot, 10/100BASE-T, CMG |

Use 1st (XX) to specify cord length:

01 = 1m (3.3 ft.), 1.5 = 1.5m (5 ft.), 02 = 2m (6.6 ft.), 03 = 3m (9.8 ft.), 05 = 5m (16.4 ft.)

Use 2nd (XX) to specify colour:

01 = Black, 02 = White, 03 = Red, 04 = Grey, 05 = Yellow, 06 = Blue, 07 = Green



S210 Designation Labels

Siemon S210 wiring blocks allow for designation labels to be mounted between each row of connecting blocks. S210 designation labels feature S210 listings on the side to clearly identify the termination type, 4-pair markings and can also be used for colour-coding.

| Part # | Description |
|------------|---|
| S110-HLDR | Transparent plastic label holders, bag of 6 |
| S210-LBL-2 | 4-Pair S210 marked white labels, bag of 6 |



S110[®]/S210 Designation Label Sheets

Siemon's S110/S210 designation label sheets provide the ability to custom print labels used on S110 or S210 blocks.*The sheets can be used to print 2-, 3-, 4-, or 5-pair labels and eliminate the need to order separate sheets for different configurations. There are 20 labels per side and both sides are marked so they can be reversed and re-printed in case of an error.

| Part # | Description |
|-------------|--|
| S110-SHT(X) | S110/S210 Designation label sheets, package of 6 |

Use (X) to specify colour: 2 = White, 3 = Red, 4 = Grey, 5 = Yellow, 6 = Blue, 7 = Green, 8 = Violet, 9 = Orange, 60 = Brown

*Visit our web site or contact our Technical Support Department for labelling software.

