

# FIRE AND SECURITY SYSTEMS

A range of products designed to British Standard regulations, specifically suited for wiring fire alarm systems and for protection against fire.



Callmaster accessory boxes are designed for emergency applications including call points, smoke and heat detectors, panic alarms, warning lights, sounders and emergency stops.

#### Product information

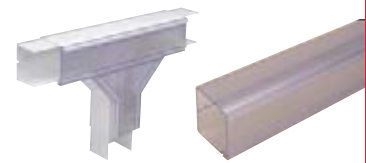
- Callmaster accessory boxes come complete with both internal pot retainers for mineral insulated (MI) cables and cable clamps included for use with conventional and fire performance cable
- Pre-punched holes in Mini trunking every 200mm for ease of installation
- Punched holes are positioned to be compatible with Firefly fire safety clips
- No need for cable glands and shrouds
- Available with one or two entries for terminal or through wiring
- Suitable for single or twin cable runs to each entry
- Compatible for use with MMT2 red or white mini trunking

Standard Colours	
WH	RD
WH: White RD: Red	



#### Clear maxi and mini trunking

Is available and particularly useful for high security installations. For further information please contact our technical team on +44 (0)1424 856688.

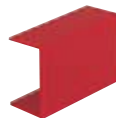


#### Trunking and fittings



##### Mini-trunking

code	size	pack
MMTH2RD	25x16mm	30x3m
MMTH2WH	25x16mm	30x3m



##### Coupler

code	description	pack
TC2RD	MMT2	40
TC2WH	MMT2	40



##### End cap

code	description	pack
TEC2RD	MMT2	100
TEC2WH	MMT2	100



##### Internal bend

code	description	pack
TIB2RD	MMT2	30
TIB2WH	MMT2	30



##### External bend

code	description	pack
TEB2RD	MMT2	30
TEB2WH	MMT2	30



##### Flat bend

code	description	pack
TFB2RD	MMT2	30
TFB2WH	MMT2	30



##### Equal tee

code	description	pack
TT2-2RD	MMT2	30
TT2-2WH	MMT2	30

#### Boxes



##### 1G accessory box - 1 entry

code	depth	pack
MCM10RD	35mm	5
MCM10WH	35mm	5

with earth terminal



##### 1G accessory box - 2 entry

code	depth	pack
MCM20RD	35mm	5
MCM20WH	35mm	5

with earth terminal



##### Circular accessory box

code	depth	pack
MCMR20RD	24mm	5
MCMR20WH	24mm	5

with earth terminal



##### Double back entry (loop-in) 34mm internal depth

code	fix. centre	pack
MDCRB2WH	50.8/60.3mm	10

Ø cut out = 70mm



##### 20mm plain body cable glands

code	cable dia.	pack
MCGP2WH	7-10.5mm	25
MCGP2AWH	4-7mm	25



##### Plain bored circular boxes

code	type	pack
2MRB2WH	Terminal-1E	20
2MRB3WH	Through-2E	20
2MRB4WH	Angle-2E	20
2MRB5WH	Tee-3E	20
2MRB13WH	U-2E	20

For use with 20mm plain body cable glands and ø20mm conduit



See page 237 for Firefly fire clips for Mini trunking

p312

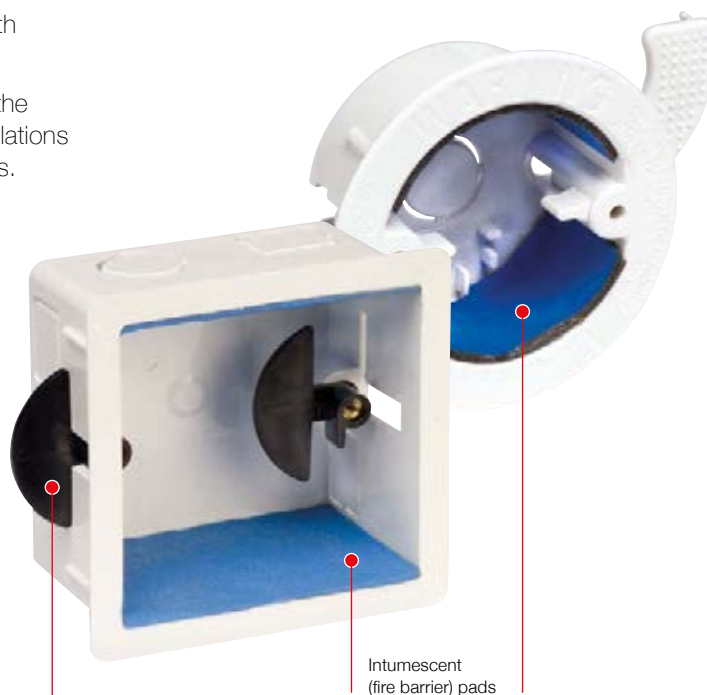
Technical Information

Marshall-Tufflex dry lining boxes are available with Envirograf® intumescent (fire barrier) pads.

With fire barrier pads fitted, boxes comply with the requirements of BS7671:2008 IEE Wiring Regulations and Document B of the UK Building Regulations.

#### Snap out clamps with size identification by colour:

Wall thickness adjustment	Clamp colour
1 - 9mm	Grey
6 - 14mm	White
18 - 25mm	Green
9 - 26mm	Black



Intumescent  
(fire barrier) pads

Snap out clamps



#### 1 gang 34mm internal depth

code	adj.	pack
MDLB3FWH	1-9mm	20
MDLB1FWH	6-14mm	20
MDLB7FWH	18-25mm	20

Note: adj. = adjustment

#### 2 gang 34mm internal depth

code	adj.	pack
MDLB4FWH	1-9mm	10
MDLB2FWH	6-14mm	10
MDLB8FWH	18-25mm	10



#### 1 gang 46mm internal depth

code	adj.	pack
MDLB29FWH	9-26mm	10

#### 2 gang 46mm internal depth

code	adj.	pack
MDLB30FWH	9-26mm	5



#### Double back entry (loop-in) 34mm internal depth

code	fix. centre	pack
MDCRB2FWH	50.8/60.3mm	10

Ø cut out = 70mm

#### Acoustic hoods

For information on acoustic hoods please refer to page 225.

#### Problem



Without pads

#### Solution



With pads

In the event of a fire, the cover plate of a socket, switch or light fitting may sag and disintegrate, leaving a perfect escape route for a fire to travel up the cavity, into an adjoining room or ceiling. When Envirograf® pads are fitted, they will expand in the presence of heat and create an effective fire barrier. This solution has been specifically designed to help electrical contractors and building design professionals meet and comply with the current regulations.

Fire Protection is also available for other Marshall-Tufflex product ranges. Wraps can be supplied around PVC-U trunking or conduit systems and pillows to fill a trunking void. Many different shapes, sizes and thicknesses are available so for further details please contact our Technical Hotline on +44 (0)1424 856688.

p312

Technical  
Information

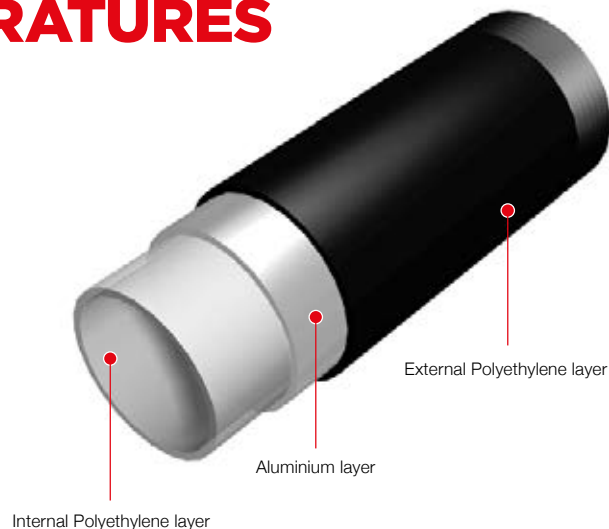
# MT Supertube FR Plus

p218

## LSOH CONDUIT FOR EXTREME TEMPERATURES

MT Supertube FR Plus is a LSOH, 3-layer heavy gauge conduit that has been specifically formulated to withstand temperatures up to 289°C. Comprising polyethylene internal and external layers over a continuous aluminium tube that provides additional mechanical strength.

MT Supertube FR Plus has excellent EMI/ EMC screening performance and meets the requirements of LUL (London Underground Ltd) engineering standard 2-01001-002 issue A1, material classification EQ/1 9 equipment/limited and dispersed).



- 20mm and 25mm
- LSOH conduit with excellent screening performance
- Suitable for rail, marine and tunnel applications
- Available in continuous lengths of up to 100 metres, meaning fewer fittings per installation
- Longer lengths also prevent ingress of water
- Extra security
- Suitable for in-screed applications
- Withstands temperatures from -40°C to +289°C
- Nail penetration: MT Supertube FR Plus, complies with requirements for BS 7671, BS 8436 and BS EN 61386

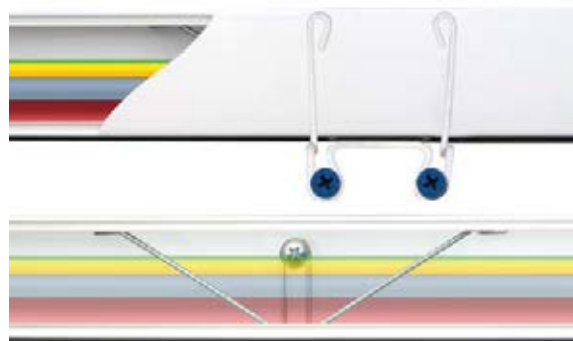


**For product ordering details, please see page 218**

To comply with the latest fire regulations, Marshall-Tufflex supply a range of Firefly fire clips to secure cables within or outside of mini trunking, maxi trunking or conduit. The clips are designed to prevent cables from falling in the event of a fire, helping to keep escape routes free and accessible.

#### Product information

- Fire safety clips to comply with BS 5839-1
- For use with mini trunking, maxi trunking and conduit
- Spring loaded design for easy installation or removal of cables
- Designed for quick installation and to maximise internal trunking space
- Internal version to fit within trunking prior to cables being installed
- External version to retrofit onto existing installations
- Melt point over 1000°C
- Kits available including all required fixings/screws ready for installation
- Independently tested and certified by an accredited test house
- Patent applied for



#### Trunking clips



**Fire clip internal MMT2**

code	trunking size	pack
FCMMT2	25 x 16mm	100



**Fire clip internal MMT3**

code	trunking size	pack
FCMMT3	38 x 16mm	100



**Fire clip internal MMT4**

code	trunking size	pack
FCMMT4	38 x 25mm	100



**Fire clip internal MMT5**

code	trunking size	pack
FCMMT5	50 x 25mm	100



**Fire clip internal MMT6**

code	trunking size	pack
FCMMT6	38 x 38mm	100



**Fire clip internal MTRS50**

code	trunking size	pack
FCMTRS50	50 x 50mm	50



**Fire clip external MMT2**

code	trunking size	pack
FCXMMT2	25 x 16mm	100



**Fire clip external MMT4**

code	trunking size	pack
FCXMMT4	38 x 25mm	100

#### Kits



**Fire clip internal kit - masonry**

code	size	kit contents*
FCXMMMT2	MMT2	200
	(25 x 16mm)	
FCXMMMT4	MMT4	100
	(38 x 25mm)	



**Fire clip internal kit - cavity**

code	size	kit contents*
FCXMMMT2	MMT2	100
	(25 x 16mm)	
FCXMMMT4	MMT4	50
	(38 x 25mm)	



**Fire clip external kit - masonry**

code	size	kit contents*
FCXMMMT2	MMT2	100
	(25 x 16mm)	
FCXMMMT4	MMT4	50
	(38 x 25mm)	



**Fire clip external kit - cavity**

code	size	kit contents*
FCXCMMT2	MMT2	50
	(25 x 16mm)	
FCXCMMT4	MMT4	50
	(38 x 25mm)	

#### Conduit clips



**Fire clip 20mm round conduit**

code	pack
FCR20	100



**Fire clip 25mm round conduit**

code	pack
FCR25	100

#### \*Kit contents

**Please note:** the quantity stated refers to the number of fire clips within the kit, each kit also contains the appropriate number of screws.

Each Masonry kit is supplied with:  
Masonry screws, washers and 1 x Ø4mm drill bit

Each Cavity kit is supplied with:  
Cavity fixings and screws

See page 159  
for punched  
mini trunking

p312

Technical  
Information



### Technical support

Our Technical Team consists of qualified Electricians, Electrical and Mechanical Engineers with many years experience of cable management installations including an understanding of the regulations and compliancy to standards in both domestic and commercial sectors. The team can advise on a wide range of solutions and technical issues, product standards, data cabling control and Part M compliancy.

We pride ourselves on providing and supplying our customers with specialist solutions to suit a variety of needs and the team's expertise enables us to provide quotations for specialist solutions. We aim to complete all standard quotes within 1 working day, although more complex quotations such as 'take offs' can take longer.



Contact our Technical Services team on +44 (0)1424 856688 or email [technical@marshall-tufflex.com](mailto:technical@marshall-tufflex.com)

### Award winning customer service

Our Customer Service Team are on hand to advise on stock availability, lead times and delivery schedules.

In 2017 Marshall-Tufflex were proud to be shortlisted in four categories at the prestigious Electrical Wholesaler Awards including Best Customer Service, Best Overall Supplier and Best Sales Representative.

Contact our Customer Services team on +44 (0)1424 856600 or email [sales@marshall-tufflex.com](mailto:sales@marshall-tufflex.com)



### BIM (Building Information Modelling)

3D Autodesk Revit models are now available to download for Marshall-Tufflex products, with the necessary technical product data for them to be easily specified and integrated into a construction project.

Visit [www.marshall-tufflex.com](http://www.marshall-tufflex.com) or [www.bimstore.co.uk](http://www.bimstore.co.uk)



### Same day collection\*



Our popular same day collection service gives our customers an unrivalled two-hour turnaround on product orders, allowing them to collect from our dedicated collection points in Manchester and London. Orders can also be collected next day from our Hastings depot.

#### Manchester

Europa Trading Estate, Stoneclough Road, Radcliffe, Manchester M26 1GG

#### London

101c Blackhorse Lane, London E17 6DJ

- Orders can be collected two hours after order placement from Manchester and London.
- Orders placed by 3.30pm will be available for collection until 5.30pm.
- Orders received by 5pm will be ready for collection from 10am the following day.

#### Hastings

55-65 Castleham Road, St Leonards-on-Sea TN38 9NU

- Orders placed by 12.30pm can be collected from 10am the next day from our Hastings depot.

\* Subject to stock availability

For details regarding collections, please contact our Customer Services team on +44 (0)1424 856600 or email [sales@marshall-tufflex.com](mailto:sales@marshall-tufflex.com)



Follow us on Twitter @MTufflex