

# Aluminium perimeter trunking systems

[www.marshall-tufflex.com](http://www.marshall-tufflex.com)

Aluminium cable containment is an excellent choice of material for office areas that need a stylish but mechanically robust trunking and for industrial, workshop and laboratory installation, particularly where a high quality of screening performance is required.



# Aluminium perimeter trunking systems

The physical properties of Aluminium offer the building industry a high quality material that is very suitable for internal cable management distribution. Aluminium is light to handle with a mechanical strength and impact-resistance that is superior to steel. Extruded sections provide attractive profiles and products are finished with a high quality, powder-coat that provides a blemish-resistant surface. Aluminium perimeter trunking systems provide the specifier, contractor and end-user with elegant, stream-lined containment that offers the practical advantages of inherent LSOH and screening properties.



## Environmental

- Aluminium is naturally found combined in over 270 different minerals, the chief source of which is bauxite ore.
- Its light weight means less strain on supporting structures, easier handling and reduced transport costs.



## Recycling and sustainability

- 100% recyclable material.
- Can be recycled many times without loss of quality.
- Recycling facilities are well established.



## EMC properties

- First class EMC/EMI screening performance especially at higher frequencies.



## Fire performance

- Aluminium systems specified with polycarbonate fittings meet accepted requirements for LSOH.
- Withstands high temperatures with a melting point of 660.32 °C (1220.58 °F).
- Polycarbonate fittings are fire rated to UL94V0.
- ABS fittings are fire rated to UL94V0.

All aluminium systems are available with standard powder coat finishes in white RAL 9016 or silver-grey RAL 9006. For other finishes, please call our Technical Team on 01424 856688.

**Sovereign Plus****70 x 20mm**

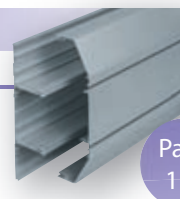
Skirting trunking with a one piece cover.



Page  
127

**XL Trunking 301****220 x 65mm**

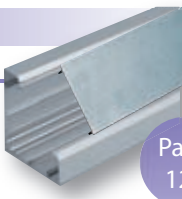
Dado trunking with three, deep compartments.



Page  
116

**Bench trunking****105 x 105mm**

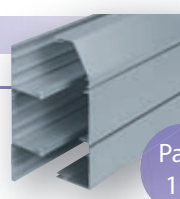
Desk and laboratory trunking.



Page  
128

**XL Trunking 302****220 x 65mm**

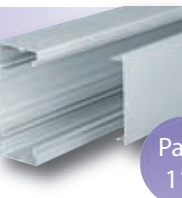
Skirting trunking with three deep compartments



Page  
116

**Elegance****110 x 55mm**

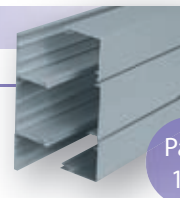
Dado trunking with a single cover.



Page  
110

**XL Trunking 303****220 x 65mm**

Dado and skirting trunking with three deep compartments



Page  
116

**Sterling Profile 3001****167 x 50mm**

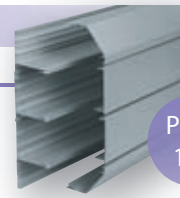
Dado trunking with three separate compartments and individual covers for each compartment.



Page  
112

**XL Trunking 311****308 x 65mm**

Dado trunking with four deep compartments.



Page  
120

**Sterling Profile 3002****167 x 50mm**

Skirting trunking with three separate compartments and individual covers for each compartment.



Page  
112

**XL Trunking 312****308 x 65mm**

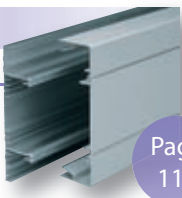
Skirting trunking with four deep compartments.



Page  
120

**Sterling Profile 3003****167 x 50mm**

Dado and skirting trunking with three separate compartments and individual covers for each compartment.



Page  
112

**XL Trunking 313****308 x 65mm**

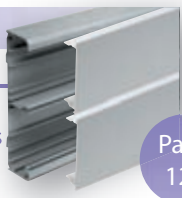
Dado and skirting trunking with four deep compartments.



Page  
120

**Twin Plus****210 x 57mm**

Large capacity dado and skirting trunking with two deep compartments with in-built segregation of power and data.



Page  
124

**Note:** use the rule on the left of this page to check profile sizes.

Elegance aluminium is a small, rectangular, dado trunking system with a single cover. It is particularly useful for workshop or laboratory supply or in a commercial environment where extra mechanical strength is necessary.

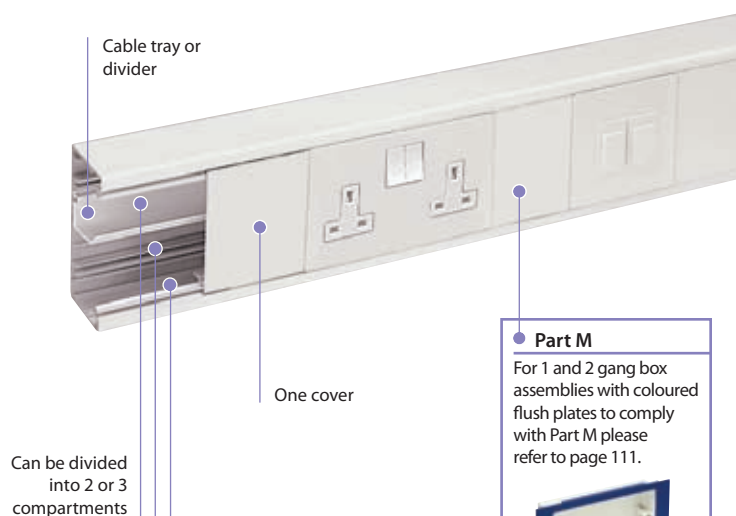
#### Product information

- 110 x 55mm
- Can be sub-divided into 2 or 3 compartments
- Suitable for dado applications
- A range of polycarbonate clip-on fittings with built-in overlaps
- Fully compatible with Marshall-Tufflex flush power and data accessories and standard UK wiring power and accessories

Standard colours	
WH	SG
WH: White SG: Silver grey	

**Colour code suffix:** to indicate the finish you require, add the required colour code to the end of the product code.

**Options:** optional colours and finishes are available but these may be subject to minimum quantity orders and longer lead times. For more information contact the Technical Team on 01424 856688.

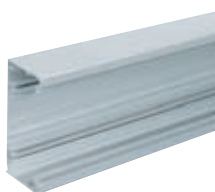


#### Part M

For 1 and 2 gang box assemblies with coloured flush plates to comply with Part M please refer to page 111.

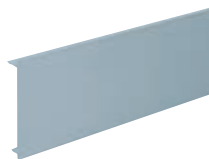


### Basic components



#### Base unit

code	pack
LTB2SG	1



#### Main compartment cover

code	pack
LTL1SG	1

### Fittings



#### End Caps (Screws included)

code	pack
LECPSSG	1



#### Internal bend

code	pack
LIBPSSG	1



#### External bend

code	pack
LXPSSG	1



#### Flat angle

code	pack
LFASSG	1



#### Flat tee

code	pack
LFTSSG	1

## Components

**RCD/MCB Housing**

code	description	pack
EAC1SG		1

\*Up to 4 modules can be accommodated

**Note:** RCDs are not supplied by Marshall-Tufflex

**Dividing fillet**

code	description	pack
LDF1	unscreened	8 x 3m
LDFS1	screened	1 x 3m

## Bonding assemblies

**Bonding terminal assembly**

code	description	pack
LBT1	incoming 16mm <sup>2</sup>	5

**Bonding strap**

code	description	pack
LBS1	base to base 32Amp	5

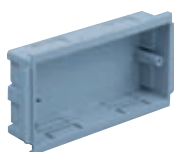
**Bonding strap**

code	description	pack
LBS2	cover to base	5

## Boxes and plates

**1 gang accessory box 30mm deep**

code	description	pack
ESSB1SG	PVC-U	1
ESSB401WH	polycarbonate	1

**2 gang accessory box 30mm deep**

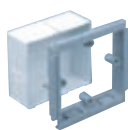
code	description	pack
ESSB2SG	PVC-U	1
ESSB402WH	polycarbonate	1

**Part M**

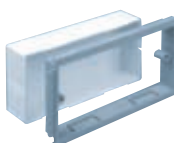
1 and 2 gang box assemblies are available to comply with the requirements of Part M (DDA).

**Part M box assembly**

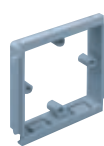
code	description	pack
ESPM1BU	1 gang - blue plate	1
ESPM1CH	1 gang - charcoal plate	1
ESPM1RD	1 gang - red plate	1
ESPM2BU	2 gang - blue plate	1
ESPM2CH	2 gang - charcoal plate	1
ESPM2RD	2 gang - red plate	1

**1 gang adjustable depth box**

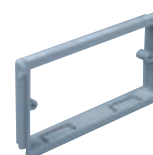
code	depth	pack
EAB1SG	32 – 40mm	10

**2 gang adjustable depth box**

code	depth	pack
EAB2SG	32 – 40mm	5

**1 gang accessory plate**

code	pack
ESSP1SG	10

**2 gang accessory plate**

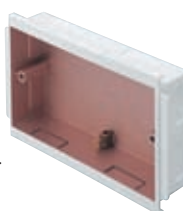
code	pack
ESSP2SG	5

## Screened boxes

**Screening**

Conductive spray (CS) is unique to Marshall-Tufflex and is applied in the factory to provide screening from electromagnetic interference to data and communications cabling within trunking systems. The coating is applied to a range of data boxes, covers, clip-on components and fabricated fittings.

**WARNING:** A CS coating is not suitable for low voltage circuits.

**1 gang screened accessory box**

code	depth	pack
ESSB1SWH*	30mm	20

**2 gang screened accessory box**

code	depth	pack
ESSB2SWH*	30mm	10

**1 gang screened adjustable box**

code	depth	pack
EAB1SWH*	32 – 40mm	10

**2 gang screened adjustable box**

code	depth	pack
EAB2SWH*	32 – 40mm	10

\*Supplied complete with earth terminal

Sterling Profile Aluminium is a popular and stylish looking trunking system that offers a variety of trunking profiles with separate compartment covers.



#### Product information

- 167 x 50mm
- 3 segregated compartments
- Can be sub-divided
- Suitable for dado and skirting applications
- A range of polycarbonate clip-on fittings with built-in overlaps
- Fully compatible with Sterling flush power and data accessories

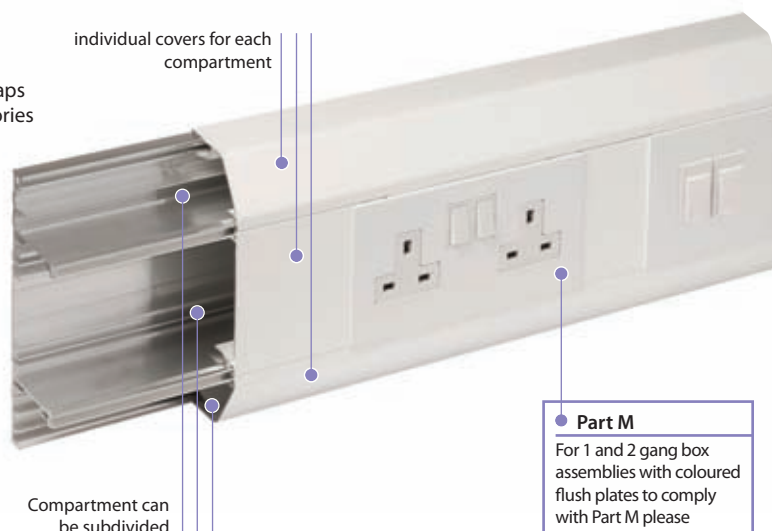
#### Data information

- Standard bend radius of 25mm (Cat 6)
- Data fittings available for bend radius up to 50mm
- Adjustable data box 32-40mm
- Screened divider and data boxes

Standard colours	
WH	SG
WH: White SG: Silver grey	

**Colour code suffix:** to indicate the finish you require, add the required colour code to the end of the product code.

**Options:** optional colours and finishes are available but these may be subject to minimum quantity orders and longer lead times. For more information contact the Technical Team on 01424 856688.

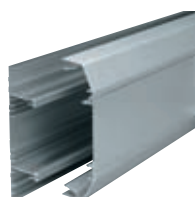


#### Part M

For 1 and 2 gang box assemblies with coloured flush plates to comply with Part M please refer to page 114.

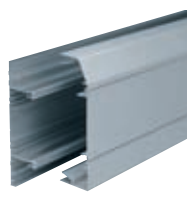


### Sterling Profiles



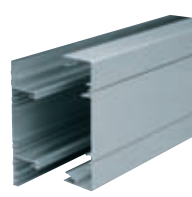
#### Profile 3001

size: 167 x 50mm



#### Profile 3002

size: 167 x 50mm



#### Profile 3003

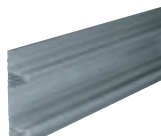
size: 167 x 50mm

### Basic components



#### Dividing fillet (PVC-U)

code	pack
EDF1	outer 8 x 3m



#### Base unit

code	pack
ETB300MF*	1 x 3m

\*MF=Mill finish



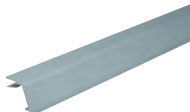
#### Cable tray (PVC-U)

code	pack
ECT1	8 x 3m



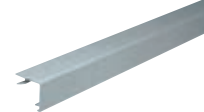
#### Main compartment cover

code	pack
LTL1SG	1 x 3m



#### Angled cover

code	pack
ETAC300SG	1 x 3m



#### Square cover

code	pack
ETSC300SG	1 x 3m

## Fittings (Polycarbonate)



Profile 3001  
Coupler

code	pack
EC401SG	5



Profile 3002  
Coupler

code	pack
EC402SG	5



Profile 3003  
Coupler

code	pack
EC403SG	5



Profile 3001  
End cap

code	pack
EEC401SG	5



Profile 3002  
End cap

code	pack
EEC402LHSG (Left hand)	5
EEC402RHSG (Right hand)	5



Profile 3003  
End cap

code	pack
EEC403SG	5



Profile 3001  
Internal bend

code	pack
EIBP401SG	5



Profile 3002  
Internal bend

code	pack
EIBP402SG	5



Profile 3003  
Internal bend

code	pack
EIBP403SG	5



Profile 3001  
External bend

code	pack
EXBP401SG	5



Profile 3002  
External bend

code	pack
EXBP402SG	5



Profile 3003  
External bend

code	pack
EXBP403SG	5



Profile 3001  
Flat angle – up/down

code	pack
EFAP3001SG	1



Profile 3002  
Flat angle – upward

code	pack
EFAP3002USG	1



Profile 3002  
Flat angle – downward

code	pack
EFAP3002DSG	1



Profile 3003  
Flat angle – up/down

code	pack
EFAP3003SG	1



Profile 3001  
Flat tee – up/down

code	pack
EFTP3001SG	1



Profile 3003  
Flat tee – up/down

code	pack
EFTP3003SG	1

#### Sterling Profile 3002 flat tees

Where profiles have one angled cover and one square cover, as with Sterling Profile 3002, it is possible to create a tee by changing the top or bottom cover so that covers match the profile of the trunking. For example:

- Upward tee – select Profile 3001 tee remove the angled bottom cover and replace with square cover.
- Downward tee – select Profile 3003 tee remove the square top cover and replace with angled cover.

## Fittings (Aluminium)

## Components

**\*RCD/MCB Housing**

code	pack
EAHC1SG	1

\*Up to 4 modules can be accommodated

**Note:** RCDs are not supplied by Marshall-Tufflex

**Dividing fillet (PVC-U) ---DATA---**

code	pack
EDF1CS1	8 x 3m

**Cable tray (PVC-U)**

code	pack
ECT1	8 x 3m

**Angled crossover bridge (PVC-U)**

code	pack
EACB1	5

**Square crossover bridge (PVC-U)**

code	pack
ESCB1	5

**Main crossover bridge (PVC-U)**

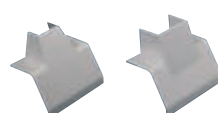
code	pack
EMCB1	5

**Angled cable retainer (PVC-U)**

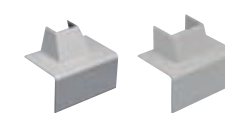
code	pack
EACR1	10

**Main cable retainer (PVC-U)**

code	pack
EMCR1	10

**Angled mini-trunking adaptor (Polycarbonate)**

code	Description	pack
EATA402SG	MMT2	5
EATA404SG	MMT4	1

**Square mini-trunking adaptor (Polycarbonate)**

code	Description	pack
ESTA402SG	MMT2	5
ESTA404SG	MMT4	1

## Bonding assemblies

**Bonding terminal assembly**

code	description	pack
LBT1	incoming 16mm <sup>2</sup>	5

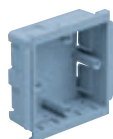
**Bonding strap**

code	description	pack
LBS1	base to base 32Amp	5

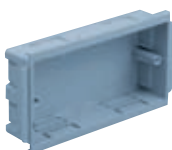
**Bonding strap**

code	description	pack
LBS2	cover to base	5

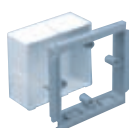
## Boxes and plates

**1 gang accessory box 30mm deep**

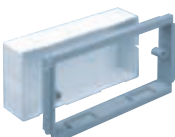
code	description	pack
ESSB1SG	PVC-U	1
ESSB401WH	polycarbonate	1

**2 gang accessory box 30mm deep**

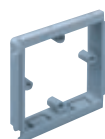
code	description	pack
ESSB2SG	PVC-U	1
ESSB402WH	polycarbonate	1

**1 gang adjustable depth box ---DATA---**

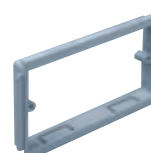
code	depth	pack
EAB1SG	32 – 40mm	10

**2 gang adjustable depth box ---DATA---**

code	depth	pack
EAB2SG	32 – 40mm	5

**1 gang accessory plate**

code	pack
ESSP1SG	10

**2 gang accessory plate**

code	pack
ESSP2SG	5

**Part M**

1 and 2 gang box assemblies with contrasting coloured flush plates are available to comply with the requirements of Part M (DDA).

**Part M box assembly**

code	description	pack
ESPM1BU	1 gang - blue plate	1
ESPM1CH	1 gang - charcoal plate	1
ESPM1RD	1 gang - red plate	1
ESPM2BU	2 gang - blue plate	1
ESPM2CH	2 gang - charcoal plate	1
ESPM2RD	2 gang - red plate	1

## Sterling Profile aluminium component chart

**Base unit**

Pack	1 x 3m
Milled aluminium	

**Main compartment cover**

Pack	1 x 3m
------	--------

**Angled cover**

Pack	1 x 3m
------	--------

**Square cover**

Pack	1 x 3m
------	--------

**Couplers**

Pack	5
------	---

**End caps**

Pack	5
Left or right handed	

**Internal bends**

Pack	5
Internal base corner needs to be mitred	

**External bends**

Pack	5
External base corner needs to be mitred	

**Flat angles**

Pack	1
Upward or downward	

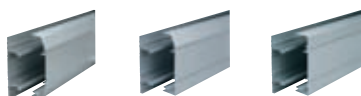
**† Flat tees**

Pack	1
------	---

† See Flat Tee information below

**3 compartment**

Profile 3001 167 x 50mm	Profile 3002 167 x 50mm	Profile 3003 167 x 50mm
----------------------------	----------------------------	----------------------------



	ETB300	ETB300	ETB300
	LTL1SG	LTL1SG	LTL1SG
	2 x ETAC300SG	1 x ETAC300SG	—
	—	1x ETSC300SG	2 x ETSC300SG
	ECP401SG	ECP402SG	ECP403SG
	EECP401SG	EEP402LHSG EEP402RHSG	EECP403SG
	EIBP401SG	EIB402SG	EIBP403SG
	EXBP401SG	EXBP402SG	EXBP403SG
	EFAP3001SG	EFAP3002USG EFAP3002DSG	EFAP3003SG
	EFTP3001SG	†	EFTP3003SG

**† Sterling Profile 3002 flat tees**

Where profiles have one angled cover and one square cover, as with Sterling Profile 3002, it is possible to create a tee by changing the top or bottom cover so that covers match the profile of the trunking. For example:

- Upward tee – select Profile 3001 tee remove the angled bottom cover and replace with square cover.
- Downward tee – select Profile 3003 tee remove the square top cover and replace with angled cover.

**Screening**

Conductive spray (CS) is unique to Marshall-Tufflex and is applied in the factory to provide protection from electromagnetic interference to data and communications cabling within trunking systems. The coating is applied to a range of data boxes, covers, clip-on components and fabricated fittings.

**WARNING:** A CS coating is not suitable for low voltage circuits.

**1 gang screened box**

code	depth	pack
ESSB1SWH*	30mm	20

**2 gang screened box**

code	depth	pack
ESSB2SWH*	30mm	10

**1 gang screened adjustable box**

code	depth	pack
EAB1SWH*	32 – 40mm	10

**2 gang screened adjustable box**

code	depth	pack
EAB2SWH*	32 – 40mm	10

\*Supplied complete with earth terminal

XL Aluminium Trunking 301 to 303 comprises a range of deep, 3-compartment systems that provide extra capacity and screening performance levels for data cabling.

#### Product information

- 220 x 65mm
- 3 deep segregated compartments
- Compartments can be sub-divided
- Suitable for dado and skirting applications (XL301 are recommended for dado application only)
- Includes a range of polycarbonate clip-on fittings with built-in overlaps
- Fully compatible with Sterling flush power and data accessories

#### Data information

- For bend radius information contact the Technical Team
- External bends feature internal segregators
- Adjustable data box 32-50mm
- Screened divider and data boxes

Standard colours	
WH	SG
WH: White SG: Silver grey	

**Colour code suffix:** to indicate the finish you require, add the required colour code to the end of the product code.

**Options:** optional colours and finishes are available but these may be subject to minimum quantity orders and longer lead times. For more information contact the Technical Team on 01424 856688.

individual covers for each compartment

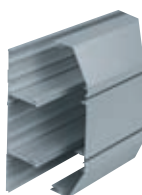


#### Part M

For 1 and 2 gang box assemblies with coloured flush plates to comply with Part M please refer to page 118.



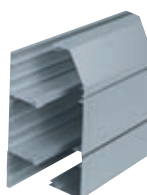
### XL profiles



**\*XL 301**

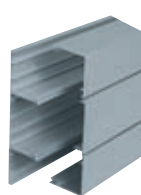
size 220 x 65mm

\*For dado installation only



**XL 302**

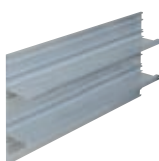
size 220 x 65mm



**XL 303**

size 220 x 65mm

### Basic components



**Base unit**

code	pack
ELTB300	1 x 3m



**Extendable base\***

code	pack
ELEB300	1 x 3m

\*To increase number of compartments



**Main compartment cover**

code	pack
LTL1SG	1



**Angled cover**

code	pack
ELAC300SG	1 x 3m



**Square cover**

code	pack
ELSC300SG	1 x 3m



**Dividing fillet**

code	pack
ELDF200SG	8 x 3m

## Fittings (Polycarbonate)



**XL 301  
Coupler**

code	pack
EC401SG	5



**XL 302  
Coupler**

code	pack
EC402SG	5



**XL 303  
Coupler**

code	pack
EC403SG	5



**XL 301  
End cap**

code	pack
EEC401SG	5



**XL 302  
End cap**

code	pack
EEC402LHSG (Left hand)	5
EEC402RHSG (Right hand)	5



**XL 303  
End cap**

code	pack
EEC403SG	5



**XL 301  
Internal bend**

code	pack
EIB401SG	5



**XL 302  
Internal bend**

code	pack
EIB402SG	5



**XL 303  
Internal bend**

code	pack
EIB403SG	5



**XL 301  
External bend**

code	pack
EXB401SG	5



**XL 302  
External bend**

code	pack
EXB402SG	5



**XL 303  
External bend**

code	pack
EXB403SG	5



**XL 301  
Flat angle – up/down**

code	pack
EFA301SG	1



**XL 302  
Flat angle – upward**

code	pack
EFA302USG	1



**XL 303  
Flat angle – downward**

code	pack
EFA302DSG	1



**Flat angle – up/down  
XL 303**

code	pack
EFA303SG	1



**XL 301  
Flat tee – up/down**

code	pack
EFT301SG	1



**XL 303  
Flat tee – up/down**

code	pack
EFT303SG	1

#### XL Trunking 302 flat tees

Where profiles have one angled cover and one square cover, as with XL 302, it is possible to create a tee by changing the top or bottom cover so that covers match the profile of the trunking. For example:

- Upward tee – select XL 301 tee remove the angled bottom cover and replace with square cover.
- Downward tee – select XL 303 tee remove the square top cover and replace with angled cover.

## Fittings (Aluminium)

## Components

**\*RCD/MCB Housing**

code	description	pack
EAHC3		1

\*Up to 4 modules can be accommodated

**Note:** RCDs are not supplied by Marshall-Tufflex

**Screened dividing fillet (PVC-U)**

code	description	pack
ELDF200CS1		4 x 3m

## Bonding assemblies

**Bonding terminal assembly**

code	description	pack
LBT1	incoming 16mm <sup>2</sup>	5

**Bonding strap**

code	description	pack
LBS1	base to base 32Amp	5

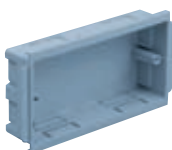
**Bonding strap**

code	description	pack
LBS2	cover to base	5

## Boxes and plates

**1 gang accessory box 30mm deep**

code	description	pack
ESSB1SG	PVC-U	1
ESSB401WH	polycarbonate	1

**2 gang accessory box 30mm deep**

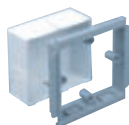
code	description	pack
ESSB2SG	PVC-U	1
ESSB402WH	polycarbonate	1

**Part M**

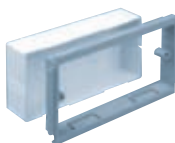
1 and 2 gang box assemblies with contrasting coloured flush plates are available to comply with the requirements of Part M (DDA).

**Part M box assembly**

code	description	pack
ESPM1BU	1 gang - blue plate	1
ESPM1CH	1 gang - charcoal plate	1
ESPM1RD	1 gang - red plate	1
ESPM2BU	2 gang - blue plate	1
ESPM2CH	2 gang - charcoal plate	1
ESPM2RD	2 gang - red plate	1

**1 gang adjustable depth box**

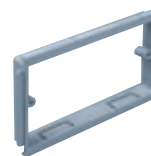
code	depth	pack
EAB1SG	32 – 40mm	10

**2 gang adjustable depth box**

code	depth	pack
EAB2SG	32 – 40mm	5

**1 gang accessory plate**

code	pack
ESSP1SG	10

**2 gang accessory plate**

code	pack
ESSP2SG	5

## Screened boxes

**Screening**

Conductive spray (CS) is unique to Marshall-Tufflex and is applied in the factory to provide screening from electromagnetic interference to data and communications cabling within trunking systems. The coating is applied to a range of data boxes, covers, clip-on components and fabricated fittings.

**WARNING:** A CS coating is not suitable for low voltage circuits.

**1 gang screened accessory box**

code	depth	pack
ESSB1SWH*	30mm	20

**2 gang screened accessory box**

code	depth	pack
ESSB2SWH*	30mm	10

**1 gang screened adjustable box**

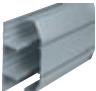
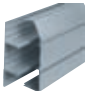
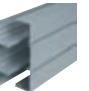
code	depth	pack
EAB1SWH*	32 – 40mm	10

**2 gang screened adjustable box**

code	depth	pack
EAB2SWH*	32 – 40mm	10

\*Supplied complete with earth terminal

XL Aluminium 301 to 303  
component chart

		3 Compartment		
		XL 301 220 x 65mm	XL 302 220 x 65mm	XL 303 220 x 65mm
				
<b>Base unit</b>		ELTB300	ELTB300	ELTB300
Pack	1 x 3m			
Features earth bonding rail and screw ports to aid the fastening of pipe clips and gas valves etc				
<b>Extendable base</b>		—	—	—
Pack	1 x 3m			
Additional 88mm compartment				
<b>Main compartment cover</b>		LTL1SG	LTL1SG	LTL1SG
Pack	1 x 3m			
<b>Angled cover</b>		2 x ELAC300SG	1 x ELAC300SG	—
Pack	1 x 3m			
<b>Square cover</b>		—	1 x ELSC300SG	2 x ELSC300SG
Pack	1 x 3m			
<b>Couplers</b>		EC401SG	EC402SG	EC403SG
Pack	5			
<b>End caps</b>		EEC401SG	EEC402LHSG EEC402RHSG	EEC403SG
Pack	5			
left or right hand				
<b>Internal bends</b>		EIB401SG	EIB402SG	EIB403SG
Pack	5			
<b>External bends</b>		EXB401SG	EXB402SG	EXB403SG
Pack	5			
<b>Flat angles</b>		EFA301SG	EFA302USG EFA302DSG	EFA303SG
Pack	1			
upward or downward				
<b>† Flat tees</b>		EFT 301SG	†	EFT303SG
Pack	1			
† See Flat Tee information below				

## † XL Trunking 302 flat tees

Where profiles have one angled cover and one square cover, as with XL 302 trunking, it is possible to create a tee by changing the top or bottom cover so that covers match the profile of the trunking. For example:

- Upward tee – select XL 301 tee remove the angled bottom cover and replace with square cover.
- Downward tee – select XL 303 tee remove the square top cover and replace with angled cover.

XL Aluminium Trunking 311 to 313 comprises a range of deep, multi-compartment systems that provide extra capacity and screening performance levels for data cabling. XL 311, 312 and 313 offer the facility to extend height for higher density cabling.

#### Product information

- 308 x 65mm
- 4 or more deep segregated compartments
- Compartments can be sub-divided
- Suitable for dado and skirting applications (XL 311 is recommended for dado application only)
- Includes a range of polycarbonate clip-on fittings with built-in overlaps
- Fully compatible with Sterling flush power and data accessories

#### Data information

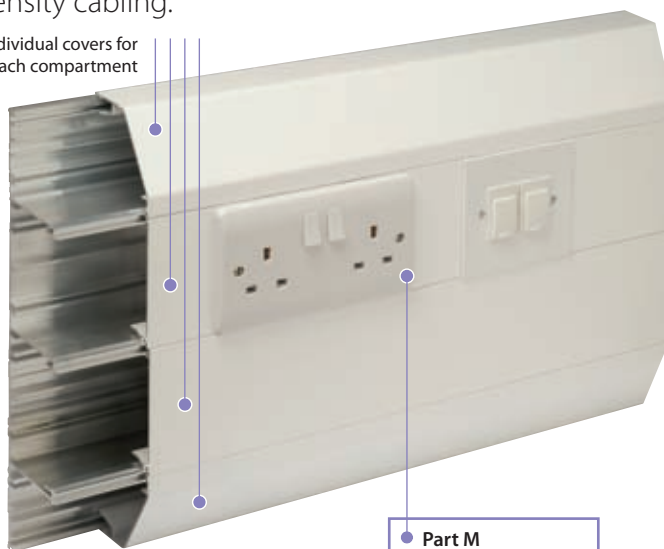
- For bend radius information contact the Technical Team
- External bends feature internal segregators
- Adjustable data box 32-50mm
- Screened divider and data boxes

Standard colours	
WH	SG
WH: White SG: Silver grey	

**Colour code suffix:** to indicate the finish you require, add the required colour code to the end of the product code.

**Options:** optional colours and finishes are available but these may be subject to minimum quantity orders and longer lead times. For more information contact the Technical Team on 01424 856688.

individual covers for each compartment

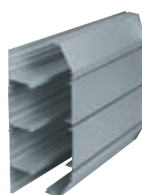


#### Part M

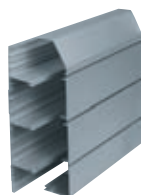
For 1 and 2 gang box assemblies with coloured flush plates to comply with Part M please refer to page 122.



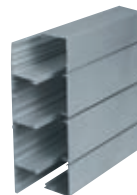
### XL profiles



**\*XL 311**  
size 308 x 65mm  
\*For dado installation only

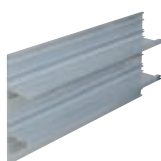


**XL 312**  
size 308 x 65mm



**XL 313**  
size 308 x 65mm

### Basic components



**Base unit**  
code ELTB300 pack 1 x 3m



**Extendable base\***  
code ELEB300 pack 1 x 3m

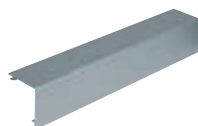


**Main compartment cover**  
code LTL1SG pack 1

\*To increase number of compartments



**Angled cover**  
code ELAC300SG pack 1 x 3m



**Square cover**  
code ELSC300SG pack 1 x 3m



**Dividing fillet**  
code ELDF200SG pack 8 x 3m



**XL 311  
Coupler**

code	pack
EC401SG plus ELLCC400SG	5



**XL 312  
Coupler**

code	pack
EC402SG plus ELLCC400SG	5



**XL 313  
Coupler**

code	pack
EC403SG plus ELLCC400SG	5



**XL 311  
End cap**

code	pack
EEC401SG plus ELLEC400SG	5
Universal for RH and LH	



**XL 312  
End cap**

code	pack
EEC402LHSG plus ELLEC400SG	5
EEC402RHSG plus ELLEC400SG	5



**XL 313  
End cap**

code	pack
EEC403SG plus ELLEC400SG	5
Universal for RH and LH	

#### End cap retaining screws

When installing end caps, additional retention can be achieved by using end cap retaining screws G1310 (pack 40).



**XL 311  
Internal bend**

code	pack
EIB401SG plus ELLIB400SG	5



**XL 312  
Internal bend**

code	pack
EIB402SG plus ELLIB400SG	5



**XL 313  
Internal bend**

code	pack
EIB403SG plus ELLIB400SG	5



**XL 311  
External bend**

code	pack
EXB401SG plus ESLEB400SG	5



**XL 312  
External bend**

code	pack
EXB402SG plus ESLEB400SG	5



**XL 313  
External bend**

code	pack
EXB403SG plus ESLEB400SG	5



**XL 311  
Flat angle – up/down**

code	pack
EFA311SG	1



**XL 312  
Flat angle – upward**

code	pack
EFA312USG	1



**XL 312  
Flat angle – downward**

code	pack
EFA312DSG	1



**XL 313  
Flat angle – up/down**

code	pack
EFA313SG	1



**XL 311  
Flat tee – up/down**

code	pack
EFT311SG	1



**XL 313  
Flat tee – up/down**

code	pack
EFT313SG	1

#### XL Trunking 312 flat tees

Where profiles have one angled cover and one square cover, as with XL 312, it is possible to create a tee by changing the top or bottom cover so that covers match the profile of the trunking. For example:

- Upward tee – select XL 311 tee remove the angled bottom cover and replace with square cover.
- Downward tee – select XL 313 tee remove the square top cover and replace with angled cover.

## Components

**\*RCD/MCB Housing**

code	description	pack
EAHC3		1

\*Up to 4 modules can be accommodated

**Note:** RCDs are not supplied by Marshall-Tufflex

**Screened dividing fillet (PVC-U)**

code	description	pack
ELDF200CS1		4 x 3m

## Bonding assemblies

**Bonding terminal assembly**

code	description	pack
LBT1	incoming 16mm <sup>2</sup>	5

**Bonding strap**

code	description	pack
LBS1	base to base 32 amp	5

**Bonding strap**

code	description	pack
LBS2	cover to base	5

## Boxes and plates

**1 gang accessory box 30mm deep**

code	description	pack
ESSB1SG	PVC-U	1
ESSB401WH	polycarbonate	1

**2 gang accessory box 30mm deep**

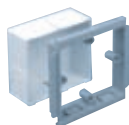
code	description	pack
ESSB2SG	PVC-U	1
ESSB402WH	polycarbonate	1

**Part M**

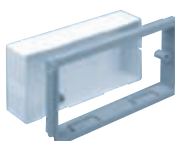
1 and 2 gang box assemblies with contrasting coloured flush plates are available to comply with the requirements of Part M (DDA).

**Part M box assembly**

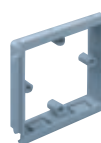
code	description	pack
ESPM1BU	1 gang - blue plate	1
ESPM1CH	1 gang - charcoal plate	1
ESPM1RD	1 gang - red plate	1
ESPM2BU	2 gang - blue plate	1
ESPM2CH	2 gang - charcoal plate	1
ESPM2RD	2 gang - red plate	1

**1 gang adjustable depth box**

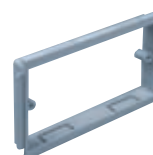
code	depth	pack
EAB1SG	32 – 50mm	10

**2 gang adjustable depth box**

code	depth	pack
EAB2SG	32 – 50mm	5

**1 gang accessory plate**

code	description	pack
ESSP1SG		10

**2 gang accessory plate**

code	description	pack
ESSP2SG		5

## Screened boxes

**Screening**

Conductive spray (CS) is unique to Marshall-Tufflex and is applied in the factory to provide screening from electromagnetic interference to data and communications cabling within trunking systems. The coating is applied to a range of data boxes, covers, clip-on components and fabricated fittings.

**WARNING:** A CS coating is not suitable for low voltage circuits.

**1 gang screened accessory box**

code	depth	pack
ESSB1SWH*	30mm	20

**2 gang screened accessory box**

code	depth	pack
ESSB2SWH*	30mm	10

**1 gang screened adjustable box**

code	depth	pack
EAB1SWH*	32 – 40mm	10

**2 gang screened adjustable box**

code	depth	pack
EAB2SWH*	32 – 40mm	10

XL Aluminium 311 to 313  
component chart**Base unit**

Pack 1 x 3m

Features earth bonding rail and screw ports to aid the fastening of pipe clips and gas valves etc

**Extendable base**

Pack 1 x 3m

Additional 88mm compartment

**Main compartment cover**

Pack 1 x 3m

**Angled cover**

Pack 1 x 3m

**Square cover**

Pack 1 x 3m

**Couplers**

Pack 5

**End caps**Pack 5  
left or right hand**Internal bends**

Pack 5

**External bends**

Pack 5

**Flat angles**Pack 1  
upward or downward**† Flat tees**

Pack 1

† See Flat Tee information below

**4 Compartment****XL 311**

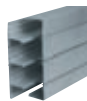
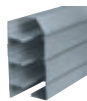
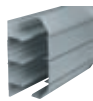
308 x 65mm

**XL 312**

308 x 65mm

**XL 313**

308 x 65mm



ELTB300

ELTB300

ELTB300

ELEB300

ELEB300

ELEB300

2 x LTL1SG

2 x LTL1SG

2 x LTL1SG

2 x ELAC300SG

1 x ELAC300SG

—

—

1 x ELSC300SG

2 x ELSC300SG

EC401SG &  
ELLCC400SGEC402SG &  
ELLCC400SGEC403SG &  
ELLCC400SGEEC401SG &  
ELLCC400SGEEC402LHSG &  
ELLECC400SG  
EEC402RHSG &  
ELLECC400SGEEC403SG &  
ELLECC400SGEIB401SG &  
ELLIB400SGEIB402SG &  
ELLIB400SGEIB403SG &  
ELLIB400SGEXB401SG &  
ESLEB400SGEXB402SG &  
ESLEB400SGEXB403SG &  
ESLEB400SG

EFA311SG

EFA312USG &  
EFA312DSG

EFA313SG

EFT311SG

†

EFT313SG

**† XL Trunking 312 flat tees**

Where profiles have one angled cover and one square cover, as with XL Trunking 312, it is possible to create a tee by changing the top or bottom cover so that covers match the profile of the trunking. For example:

- Upward tee – select XL 311 tee remove the angled bottom cover and replace with square cover.
- Downward tee – select XL 313 tee remove the square top cover and replace with angled cover.

Twin Plus Aluminium is an extra deep cable management solution incorporating two large segregated high capacity compartments. Twin Plus is specifically designed for carrying large quantities of Cat 6 data cabling.

#### Product information

- 210 x 57mm
- 2 large permanent segregated compartments
- Each compartment can be sub divided
- Suitable for dado and skirting applications
- Bends angles and tees with a large bend radius
- Includes a range of clip-on fittings with built-in overlaps
- Fully compatible with Sterling flush power and data accessories

#### Data information

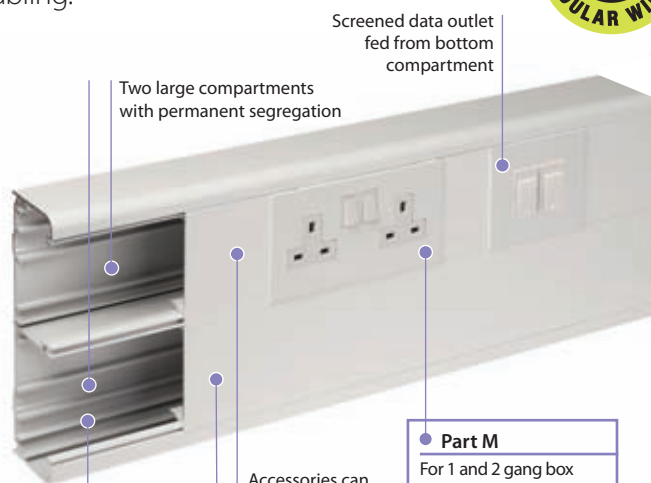
- 50mm bend radius fittings
- Adjustable data box 32-47mm
- Screened divider and data boxes

Standard colours	
WH	SG
WH: White SG: Silver grey	

**Colour code suffix:** to indicate the finish you require, add the required colour code to the end of the product code.

**Options:** optional colours and finishes are available but these may be subject to minimum quantity orders and longer lead times. For more information contact the Technical Team on 01424 856688.

DATA



Two large compartments with permanent segregation

Screened data outlet fed from bottom compartment

Accessories can be fitted in either compartment

Compartment without accessories offers extra large data cable capacity

#### Part M

For 1 and 2 gang box assemblies with coloured flush plates to comply with Part M please refer to page 126.



### Basic components



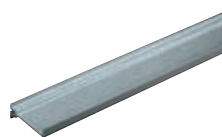
Base unit

code	pack
EMTA60SG	1 x 3m



Main compartment cover (aluminium)

code	pack
LTL1SG	1 x 3m



Dividing fillet (PVC-U)

code	pack
LDF1	8 x 3m

### Fittings (ABS)



Coupler

code	pack
EC60SG	1



End cap

code	pack
EEC60SG	1

#### End cap retaining screws

When installing end caps, additional retention can be achieved by using end cap retaining screws G1310 (pack 40).



Internal bend cover

code	pack
EIBC60	1



Standard external bend cover

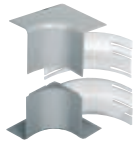
code	pack
ESXBC60SG	1



Flat angle cover

code	pack
EFAC60SG	1

## Fittings (ABS)



---DATA---

## Internal bend assembly

code	pack
EIB60SG	1



---DATA---

External bend assembly  
Standard

code	pack
ESXB60SG	1

Capacity reduced by 50%



---DATA---

External bend assembly  
Large

code	pack
EXB60SG	1



---DATA---

## Flat angle assembly

code	pack
EFA60SG	1

Covers only in ABS



---DATA---

## Flat tee assembly

code	pack
EFTA60SG	1

Flat Tees include covers, cable inserts in ABS with base in aluminium

## Components



## \*RCD/MCB Housing

code	pack
EAHC60	1

\*Up to 4 modules can be accommodated

**Note:** RCDs are not supplied by Marshall-TufflexDividing fillet  
(PVC-U)

code	pack
LDFS1	8 x 3m

Mini trunking adaptor  
(polycarbonate)

code	description	pack
EATA62	MMT2	1

Mini trunking adaptor  
(polycarbonate)

code	description	pack
EATA64	MMT4	1

## Bonding assemblies



## Bonding terminal assembly

code	description	pack
LBT1	incoming 16mm <sup>2</sup>	5



## Bonding strap

code	description	pack
LBS1	base to base 32 amp	5



## Bonding strap

code	description	pack
LBS2	cover to base	5

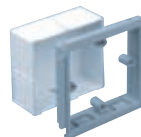
## Boxes and plates

1 gang accessory box  
30mm deep

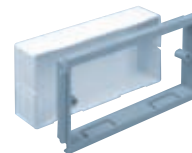
code	description	pack
ESSB1SG	PVC-U	1
ESSB401WH	polycarbonate	1

2 gang accessory box  
30mm deep

code	description	pack
ESSB2SG	PVC-U	1
ESSB402WH	polycarbonate	1

1 gang adjustable  
depth box

code	depth	pack
EAB1SG	32 – 50mm	10

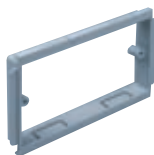
2 gang adjustable  
depth box

code	depth	pack
EAB2SG	32 – 50mm	5



1 gang accessory plate

code	pack
ESSP1SG	5



2 gang accessory plate

code	pack
ESSP2SG	5

## Part M

1 and 2 gang box assemblies with contrasting coloured flush plates are available to comply with the requirements of Part M (DDA).



## Part M box assembly

code	description	pack
ESPM1BU	1 gang - blue plate	1
ESPM1CH	1 gang - charcoal plate	1
ESPM1RD	1 gang - red plate	1
ESPM2BU	2 gang - blue plate	1
ESPM2CH	2 gang - charcoal plate	1
ESPM2RD	2 gang - red plate	1

## Screened boxes

## Screening

Conductive spray (CS) is unique to Marshall-Tufflex and is applied in the factory to provide screening from electromagnetic interference to data and communications cabling within trunking systems. The coating is applied to a range of data boxes, covers, clip-on components and fabricated fittings.

**WARNING:** A CS coating is not suitable for low voltage circuits.



## 1 gang screened accessory box

code	depth	pack
ESSB1SWH*	30mm	20

## 2 gang screened accessory box

code	depth	pack
ESSB2SWH*	30mm	10

## 1 gang screened adjustable box

code	depth	pack
EAB1SWH*	32 – 50mm	10

## 2 gang screened adjustable box

code	depth	pack
EAB2SWH*	32 – 50mm	10

\*Supplied complete with earth terminal

Sovereign Plus Aluminium is a small skirting trunking suitable for installation into hotels, small offices and houses.

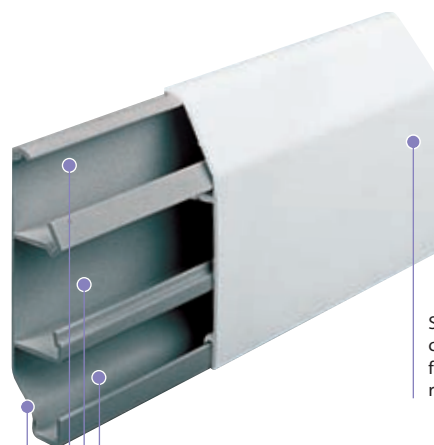
#### Product information

- 75 x 20mm
- 3 compartments
- Suitable for skirting application
- Architrave option available
- Overlapping fittings
- External accessory boxes designed to accept square and radiused corner accessories
- Trunking supplied as complete assembly

Standard colours	
WH	SG
WH: White SG: Silver grey	

**Colour code suffix:** to indicate the finish you require, add the required colour code to the end of the product code.

**Options:** optional colours and finishes are available but these may be subject to minimum quantity orders and longer lead times. For more information contact the Technical Team on 01424 856688.



Smooth one-piece cover can be removed to facilitate redecoration or refurbishment

Compartments cater for mixed services

Base profile designed to fit tightly into corners

#### Trunking and fittings



##### Skirting trunking

code	size	pack
JEA03SG	75 x 20mm	1 x 3m



##### Coupler

code	pack
JM422SG	10



##### End cap

code	pack
JM421SG (Left hand)	2
JM420SG (Right hand)	2



##### Internal corner

code	pack
JM423SG	5



##### External corner

code	pack
JM424SG	5



##### Cable retainer

code	pack
JM28	100



##### Mini trunking adaptor (in line)

code	description	pack
JM425SG	MMT2	2



##### Mini adaptor stop end

code	description	pack
JM426SG (Right Hand) MMT3		2
JM427SG (Left Hand) MMT3		2
(shown)		

#### Boxes



##### 1 gang accessory box External mounting

code	depth	pack
JM441SG	32mm	5



##### 2 gang accessory box External mounting

code	depth	pack
JM442SG	32mm	3

Bench Trunking Aluminium is a robust angled trunking that can be mounted directly on to desks, work benches or fitted under shelving.

#### Product information

- 105 x 105mm
- Suitable for desk, bench or worktop applications
- Can be subdivided
- Fully compatible with Sterling flush power and data accessories

#### Data information

- Adjustable data box 32-40mm
- Screened divider and data boxes

Standard colours	
WH	SG
WH: White SG: Silver grey	

**Colour code suffix:** to indicate the finish you require, add the required colour code to the end of the product code.  
**Options:** optional colours and finishes are available but these may be subject to minimum quantity orders and longer lead times.  
 For more information contact the Technical Team on 01424 856688.

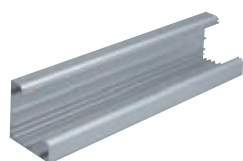


#### Part M

For 1 and 2 gang box assemblies with coloured flush plates to comply with Part M please refer to page 129.



### Basic components



#### Trunking base

code	size	pack
MBTAB105SG	105 x 105mm	1 x 3m



#### Cover

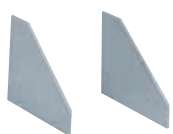
code	pack
MBTAL105SG	1 x 3m



#### Dividing fillet (PVC-U)

code	pack
BDF105SG	4 x 3m

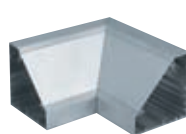
### Fittings



#### End caps (steel)

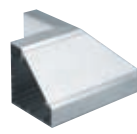
code	pack
BECA105SG	1

with fixing screws



#### Internal angle (aluminium)

code	pack
BIAA105SG	1



#### External angle (aluminium)

code	pack
BEAA105SG	1

### Bench units



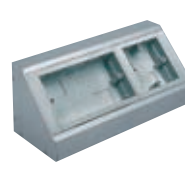
#### 1 gang bench unit

code	description	pack
MBUA1SG	no socket	1
MBA1SG	ESS1G socket	1



#### 2 gang bench unit

code	description	pack
MBUA2SG	no socket	1
MBSA2SG	ESS2G socket	1



#### 1 & 2 gang bench unit

code	description	pack
MBUA3SG	no sockets	1

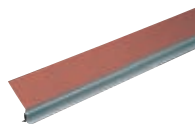
## Components

**\*RCD/MCB Housing**

code	pack
EABC60	2

\*Up to 4 modules can be accommodated

**Note:** RCDs are not supplied by Marshall-Tufflex

**Dividing fillet (PVC-U)****Screened**

code	pack
BDF105CS1	1 x 3m

## Bonding assemblies

**Bonding terminal assembly**

code	description	pack
LBT1	incoming 16mm <sup>2</sup>	5

**Bonding strap**

code	description	pack
LBS1	base to base 32 amp	5

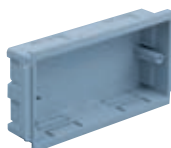
**Bonding strap**

code	description	pack
LBS2	cover to base	5

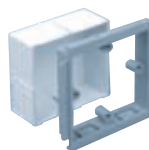
## Boxes and plates

**1 gang accessory box 30mm deep**

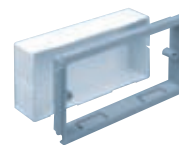
code	description	pack
ESSB1SG	PVC-U	1
ESSB401WH	polycarbonate	1

**2 gang accessory box 30mm deep**

code	description	pack
ESSB2SG	PVC-U	1
ESSB402WH	polycarbonate	1

**1 gang adjustable depth box**

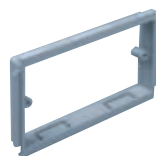
code	depth	pack
EAB1SG	32 – 40mm	10

**2 gang adjustable depth box**

code	depth	pack
EAB2SG	32 – 40mm	5

**1 gang accessory plate**

code	pack
ESSP1SG	10

**2 gang accessory plate**

code	pack
ESSP2SG	5

**Part M**

1 and 2 gang box assemblies with contrasting coloured flush plates are available to comply with the requirements of Part M (DDA).

**Part M box assembly**

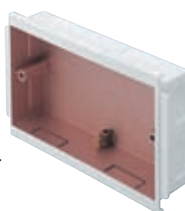
code	description	pack
ESPM1BU	1 gang - blue plate	1
ESPM1CH	1 gang - charcoal plate	1
ESPM1RD	1 gang - red plate	1
ESPM2BU	2 gang - blue plate	1
ESPM2CH	2 gang - charcoal plate	1
ESPM2RD	2 gang - red plate	1

## Screened boxes

**Screening**

Conductive spray (CS) is unique to Marshall-Tufflex and is applied in the factory to provide screening from electromagnetic interference to data and communications cabling within trunking systems. The coating is applied to a range of data boxes, covers, clip-on components and fabricated fittings.

**WARNING:** A CS coating is not suitable for low voltage circuits.

**1 gang screened accessory box**

code	depth	pack
ESSB1SWH*	30mm	20

**2 gang screened accessory box**

code	depth	pack
ESSB2SWH*	30mm	10

**1 gang screened adjustable box**

code	depth	pack
EAB1SWH*	32 – 40mm	10

**2 gang screened adjustable box**

code	depth	pack
EAB2SWH*	32 – 40mm	10

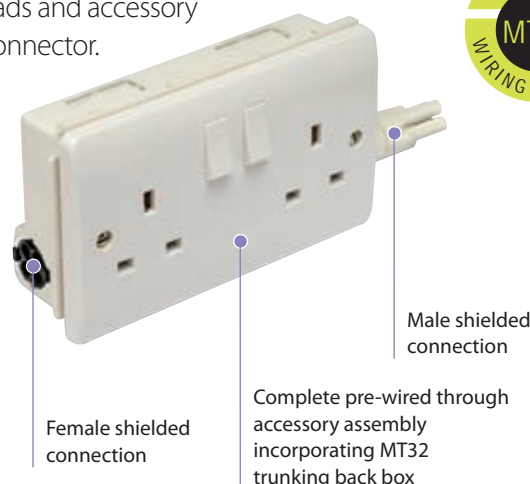
\*Supplied complete with earth terminal

MT32 modular system for the installation of power within perimeter trunking. A range of pre-wired, tested and assembled interconnecting leads and accessory modules incorporating the Marshall-Tufflex compact 32Amp connector.

#### Product information

- 32Amp rated system
- Available as LSOH 3 core 2.5mm<sup>2</sup> flex system or as 4.0mm<sup>2</sup> singles system specification that meets the requirement for high integrity earthing
- Suitable for ring and radial circuits
- Circuit testing only required on completion of final layout
- Zero harm – no cutting required on site
- Reduced health & safety risk
- Zero waste on site

Standard colour
WH
WH: White



### Pre-wired accessories

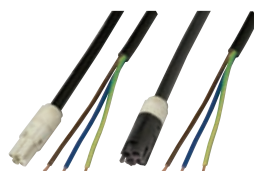


#### Extension cable 2.5mm<sup>2</sup>

code	length	pack
AA3330	0.5m	1
AA3331	1.0m	1
AA3332	1.5m	1
AA3333	3.0m	1
AA3335	5.0m	1

#### Extension cable 4.0mm<sup>2</sup>

code	length	pack
AA3350	0.5m	1
AA3351	1.0m	1
AA3352	1.5m	1
AA3353	3.0m	1
AA3355	5.0m	1

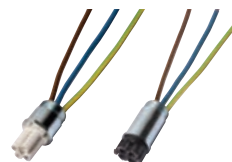


#### Connection cable free end 2.5mm<sup>2</sup>

code	length	pack
AA3732 (male)	1.5m	1
AA3532 (female)	1.5m	1

#### Connection cable free end 4.0mm<sup>2</sup>

code	length	pack
AA3752 (male)	1.5m	1
AA3552 (female)	1.5m	1



#### \*Male and female adaptors 2.5mm<sup>2</sup>

code	length	pack
AA7211 (male)	220mm	1
AA7212 (female)	220mm	1

#### \*Male & female adaptors 4.0mm<sup>2</sup>

code	length	pack
AA7251 (male)	220mm	1
AA7252 (female)	220mm	1

For adapting distribution board to modular system  
Note: to fit 20mm knockout

#### \*MT32 Connectors

The description 'male' (white) and 'female' (black) does not refer to the connector pins but describes and identifies the moulded connector housings.

For further information please contact our Technical Team on 01424 856688.



#### \*Adaptor cables 2.5mm<sup>2</sup>

code	length	pack
AA8901 (male/male)	0.5m	1
AA8902 (female/female)	0.5m	1

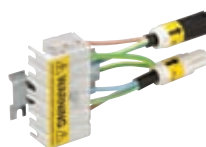
Required for ring circuit



#### \*Adaptor cables 4.0mm<sup>2</sup>

code	length	pack
AA8951 (male/male)	0.5m	1
AA8952 (female/female)	0.5m	1

Required for ring circuit



#### \*Terminal block

code	size	pack
AA6510 (female/male)	2.5mm <sup>2</sup>	1
AA6520 (female/male)	4.0mm <sup>2</sup>	1



#### Tee/Splitter – F/MM 2.5mm<sup>2</sup>

code	pack
AA7112	1

#### Tee/Splitter – F/MM 4.0mm<sup>2</sup>

code	pack
AA7115	1

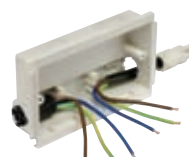


#### Pre-wired accessory 2.5mm<sup>2</sup>

code	size	pack
AA6121	1 gang	1
AA6221	2 gang	1

#### Pre-wired accessory 4.0mm<sup>2</sup>

code	size	pack
AA6151	1 gang	1
AA6251	2 gang	1



#### Pre-assembled outlet box 2.5mm<sup>2</sup>

code	size	pack
AA6321	1 gang	1
AA6421	2 gang	1

#### Pre-assembled outlet box 4.0mm<sup>2</sup>

code	size	pack
AA6351	1 gang	1
AA6451	2 gang	1