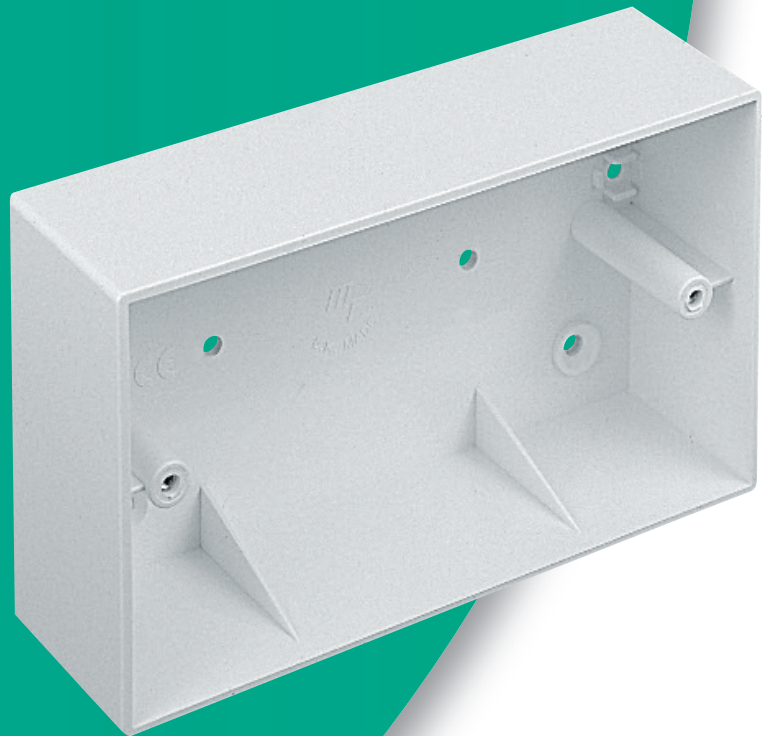


# Accessory boxes and enclosures

[www.marshall-tufflex.com](http://www.marshall-tufflex.com)

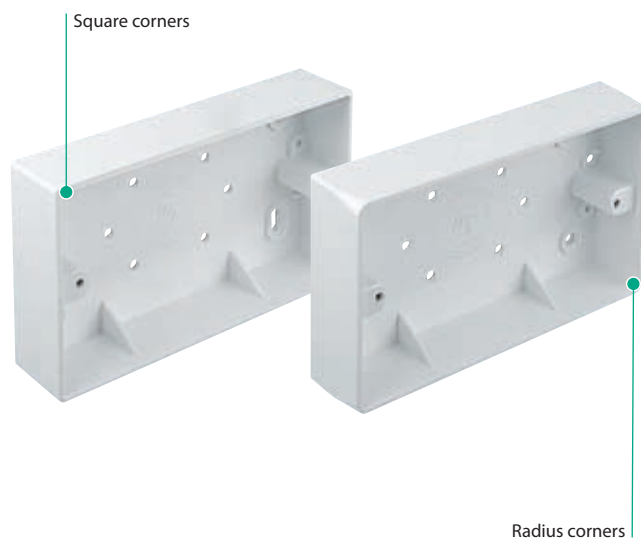
**Surface and flush accessory boxes and enclosures are manufactured from super high impact PVC-U.**



Standard fixed accessory boxes without knockouts for surface installation.

#### Product information

- 1 gang 87 x 87mm OD (outside dimension)
- 2 gang 87 x 147mm OD
- M3.5 brass inserts
- Can be cut and drilled without the risk of shattering
- Boxes comply with BS 4662:2006
- Radius and square corner variants



Standard colour
WH
WH: White

#### Square corners



1 gang accessory box  
Square corners

code	depth	pack
MSSB9WH	25mm	20
MSSB10WH	32mm	20
MSSB17WH	44mm	10



2 gang accessory box  
Square corners

code	depth	pack
MSSB8WH	25mm	10
MSSB11WH	32mm	10
MSSB23WH	44mm	5

#### Radius corners



1 gang accessory box  
Radius corners

code	depth	pack
MSSB26WH	19mm	20
MSSB19WH	32mm	20
MSSB40WH	44mm	10



2 gang accessory box  
Radius corners

code	depth	pack
MSSB48WH	28mm	10
MSSB21WH	32mm	10
MSSB41WH	44mm	5



Dual gang accessory box

code	depth	pack
MSSB81WH	32mm	10

#### Cover plates



Cover plate – flat

code	description	pack
MSCP2WH	1 gang	20
MSCP3WH	2 gang	10

Depth 2mm



Raised cover plate – raised

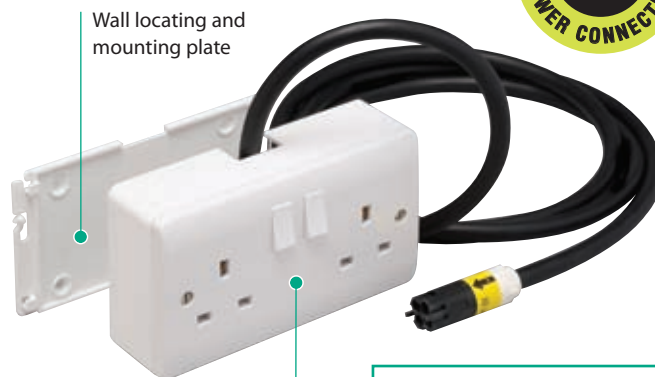
code	description	pack
MSSP10WH	1 gang	10
MSSP20WH	2 gang	10

Depth 9mm

Prefabricated surface mount boxes are complete, pre-wired accessory modules for surface installations that provide easy positioning and fast-fix connection of pre-wired accessories.

#### Product information

- Fully tested and assembled with 2.0m of LSOH flex, 3 pole standard MT32 connectors and wiring accessories
- Supplied complete with fast-fix surface mounting plate
- Fixing plate easily positioned and independent of electrical assembly
- Fire barrier pads can be fitted to meet the requirements of UK Building Regulations
- Acoustic hoods can be fitted to meet the requirements of UK Building Regulations
- Zero harm – no cutting required on site.
- Reduced health & safety risk.
- Zero waste on site.
- Helps reduce LTIs (Lost Time Injuries) on site
- Sustainable and re-usable
- Can be used with MMT2 and MMT4 Mini trunking



Wall locating and mounting plate

Enclosed accessory and back box (Terminal box shown)



#### MT32 Connectors

The description 'male' (white) and 'female' (black) does not refer to the connector pins but describes and identifies the moulded connector housings.

For further information please contact our Technical Team on 01424 856688.

### Terminal boxes



1 gang terminal box  
Square corners

code	depth	cable size	pack
AC1120	45.5mm	2.5mm <sup>2</sup>	1



2 gang terminal box  
Square corners

code	depth	cable size	pack
AC1220	45.5mm	2.5mm <sup>2</sup>	1



1 gang terminal  
Radius corners

code	depth	cable size	pack
AC2120	43mm	2.5mm <sup>2</sup>	1



2 gang terminal  
Radius corners

code	depth	cable size	pack
AC2220	43mm	2.5mm <sup>2</sup>	1

### Through boxes



1 gang through box  
Square corners

code	depth	cable size	pack
AC3120	45.5mm	2.5mm <sup>2</sup>	1



2 gang through box  
Square corners

code	depth	cable size	pack
AC3220	45.5mm	2.5mm <sup>2</sup>	1



1 gang through box  
Radius corners

code	depth	cable size	pack
AC4120	43mm	2.5mm <sup>2</sup>	1



2 gang through box  
Radius corners

code	depth	cable size	pack
AC4220	43mm	2.5mm <sup>2</sup>	1

### Components

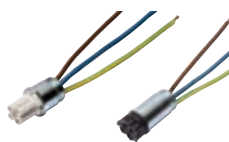


Extension cables 2.5mm<sup>2</sup>

code	length	pack
AA3330	0.5m	1
AA3331	1.0m	1
AA3332	1.5m	1
AA3333	3.0m	1
AA3335	5.0m	1

#### Extension cables

For availability of non-standard lengths, please call the Technical Team on 01424 856688



Male & female adaptors  
2.5mm<sup>2</sup>

code	pack
AA7211 (Male)	1
AA7212 (Female)	1

For connection to distribution board



Tee/Splitter - F/MM 2.5mm<sup>2</sup>

code	pack
AA7112	1

#### Mini trunking options



MMT2 is suitable for use with terminal boxes.



MMT4 is suitable for use with through boxes.

#### Note:

For Mini Trunking please refer to section PVC-U Domestic and General Trunking on page 148.

Flush mounted boxes for use within stud walls for alleviating the necessity of using noggins. Boxes feature a wide securing flange around the outer rim for accurate positioning and alignment.

#### Product information

- Wide securing flange
- Swivelling snap out clamps will grip any standard thickness of building board tightly
- Earth terminal provision incorporated
- British Patent Application No. 8208041

Standard colour
WH
WH: White

#### Snap out clamps with size identification by colour:

Wall thickness adjustment	Clamp colour
1 - 9mm	Grey
6 - 14mm	White
18 - 25mm	Green
9 - 26mm	Black



Wide securing flanges

#### Standard



1 gang 34mm internal depth		
code	adjustment	pack
MDLB3WH	1-9mm	20
MDLB1WH	6-14mm	20
MDLB7WH	18-25mm	20

2 gang 34mm internal depth		
code	adjustment	pack
MDLB4WH	1-9mm	10
MDLB2WH	6-14mm	10
MDLB8WH	18-25mm	10

Dual gang 34mm internal depth		
code	adjustment	pack
MDLB20WH	1-9mm	5
MDLB22WH	6-14mm	5
MDLB24WH	18-25mm	5

#### Shallow



1 gang 25mm internal depth		
code	adjustment	pack
MDLB13WH	1-9mm	10

2 gang 25mm internal depth		
code	adjustment	pack
MDLB14WH	1-9mm	10

#### FIRE SECURITY

##### Intumescent fire barrier pads

Fire Barrier Pads are now a requirement of Document B of the UK Building Regulations. For information on Fire Barrier Pads please refer to page 217 in our Fire and Security section or contact our Technical Team on 01424 856688.



#### Deep



1 gang 46mm internal depth		
code	adjustment	pack
MDLB29WH	9-26mm	10

2 gang 46mm internal depth		
code	adjustment	pack
MDLB30WH	9-26mm	5

#### Accessory



Brass earthing terminal		
code	Rating	pack
MET1	15 Amp	100

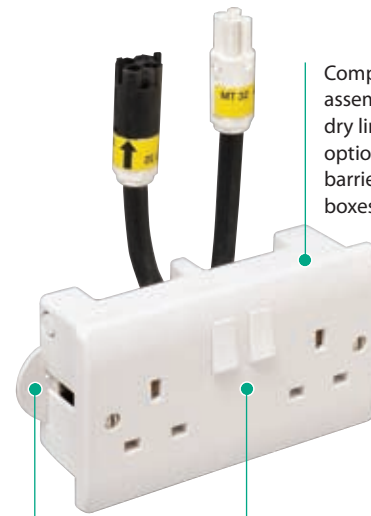


Acoustic hoods		
code	description	pack
MDLA1	1 gang	10
MDLA2	2 gang	10

Prefabricated dry lining boxes are complete pre-wired accessory modules that provide fast connection and easy installation, positioning and fixing. Boxes are designed to be installed in dry wall board up to 32mm and alleviate the necessity for using noggins.

#### Product information

- Fully tested and assembled with accessory face plate and MT32 connector attached
- Boxes feature a wide securing flange around the outer rim to assist in alignment and positioning
- Unique locking mechanism grips the dry wall board firmly and securely
- 1 gang and 2 gang boxes available with 2.5mm<sup>2</sup> cables\* to fit apertures of 73 x 73mm and 153 x 73mm
- For 4.0mm<sup>2</sup> cable please call the Technical Team on 01424 856688
- Fire barrier pads can be fitted to meet the requirements of UK Building Regulations
- Acoustic hoods can be fitted to meet the requirements of UK Building Regulations
- Zero harm – no cutting required on site.
- Reduced health & safety risk.
- Zero waste on site.
- Helps reduce LTIs (Lost Time Injuries) on site
- Sustainable and re-usable



Complete pre-wired pre-assembled accessory and dry lining box with optional intumescent fire barrier pads (Through boxes shown).

Fast-fit locking mechanism

Boxes shaped to permit easy entry into double skin wall

#### Terminal boxes



##### 1 gang terminal box

code	depth	cable size	pack
AD6121	37mm	2.5mm <sup>2</sup>	1

##### 1 gang terminal box with intumescent fire barrier pads

code	depth	cable size	pack
AD6129	37mm	2.5mm <sup>2</sup>	1



##### 2 gang terminal box

code	depth	cable size	pack
AD6221	37mm	2.5mm <sup>2</sup>	1

##### 2 gang terminal box with intumescent fire barrier pads

code	depth	cable size	pack
AD6229	37mm	2.5mm <sup>2</sup>	1

#### MT32 Connectors

The description 'male' (white) and 'female' (black) does not refer to the connector pins but describes and identifies the moulded connector housings.

For further information please contact our Technical Team on 01424 856688.

#### Through boxes



##### 1 gang through box

code	depth	cable size	pack
AD6321	37mm	2.5mm <sup>2</sup>	1

##### 1 gang through box with intumescent fire barrier pads

code	depth	cable size	pack
AD6329	37mm	2.5mm <sup>2</sup>	1



##### 2 gang through box

code	depth	cable size	pack
AD6421	37mm	2.5mm <sup>2</sup>	1

##### 2 gang through box with intumescent fire barrier pads

code	depth	cable size	pack
AD6429	37mm	2.5mm <sup>2</sup>	1

#### \*Cable size

MT32 Dry Lining boxes can also be supplied with 4.0mm<sup>2</sup> cabling. For more information on this, please contact the Technical Team on 01424 856688.

#### Components



##### Extension cables 2.5mm<sup>2</sup>

code	length	pack
AA3330	0.5m	1
AA3331	1.0m	1
AA3332	1.5m	1
AA3333	3.0m	1
AA3335	5.0m	1

##### Extension cables

For availability of non-standard lengths, please call the Technical Team on 01424 856688



##### Male & female adaptors 2.5mm<sup>2</sup>

code	pack
AA7211 (Male)	1
AA7212 (Female)	1

For connection to distribution board



##### Tee/Splitter - F/MM 2.5mm<sup>2</sup>

code	pack
AA7112	1



##### Acoustic hoods

code	description	pack
MDLA1	1 gang	10
MDLA2	2 gang	10



## Circular flush mounted boxes

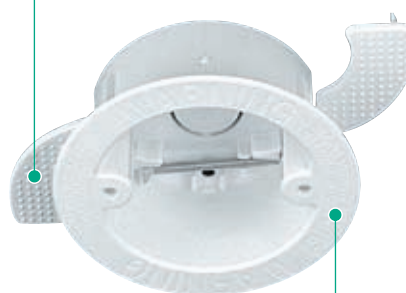
## Product information

- Wide securing flange to prevent box passing through cavity
- For board thickness from 9 to 32mm measured from the face of the board
- Swivelling snap out clamps fix the box firmly into position (screws provided)

Standard colour
WH
WH: White

Options: Other colours are available but may be subject to minimum order quantities and longer lead times. For further information please contact the Technical Team on 01424 856688.

Snap out clamps with size identification by colour:



Wide securing flanges

## FIRE SECURITY

## Intumescent fire barrier pads

Fire Barrier Pads are now a requirement of Document B of the UK Building Regulations. For information on Fire Barrier Pads please refer to page 217 in our Fire and Security section or contact our Technical Team on 01424 856688.



## Dry lining boxes



Single back entry  
34mm internal depth (white clamps)

code	fix. centre	pack
MDCRB1WH	50.8mm	10

Ø cut out = 64mm



Double back entry - loop in  
34mm internal depth (red clamps)

code	fix. centre	pack
MDCRB2WH	50.8/60.3mm	10

Ø cut out = 70mm

## Ceiling connections

## Product information

- For terminating light fittings when a terminal ceiling rose is not practical.
- Useful with chandeliers and other types of ceiling hung light fittings.
- Built in earth terminal.
- Suitable for most types of ceiling void.
- Encloses termination when used in conjunction with a suitable accessory (BS 7671).



Ceiling connector box  
Red only

code	pack
MCCB1RD	10

Does not support the electrical fitting

## Moulded enclosures

## Product information

- Degree of Protection IP66.
- Optional insulated accessory mounting plate.
- Raised pads in base of box to allow accessory mounting nuts to be recessed.
- Silicon rubber lid seal supplied as standard.
- Brass inserts M3.5 with stainless countersunk fixing screws.
- Suitable for drilling or cutting.
- Raised flat lid for strength.



Moulded enclosure unit (Adaptable box)

code	external size	pack
MTAB75AWH	81 x 81 x 67mm	10
MTAB100AWH	106 x 106 x 67mm	10
MTAB150BWH	155 x 155 x 92mm	4



Insulated accessory mounting plates

code	pack
MTMP75WH	1
MTMP100WH	1
MTMP150WH	1

## Earth rod box

## Product information

- Protects connection to earth rod.
- Earth rod/cable entry ø7-10.5mm.



Earth rod box  
Green only

code	external size	pack
MECB75GN	81 x 81 x 67mm	10
MECB100GN	106 x 106 x 67mm	10