

Racks and Cable Management

Siemon's line of open racks and cable management solutions covers nearly any network infrastructure need: 4-post and 2-post racks, exclusive rack-mount vertical cable managers, 19 in. horizontal managers, cable tray and much more.

Section Contents

VersaPOD® 4-Post Rack	9.1 - 9.2
RS3 Cable Management Rack System	9.3 - 9.4
RS Rack System	9.5 - 9.6
Rack Accessories	9.7
Vertical Cable Management Channels	9.7
RS Rack System - Value Rack	9.8 - 9.9
Vertical Patching Channels	9.10 - 9.11
RouteIT™ Cable Managers	9.12 - 9.13
Cable Tray Rack	9.14 - 9.15
WM Series Cable Managers	9.16
Cable Hangers	9.16
Hook and Loop Cable Managers	9.16
Stand-Off Brackets	9.17
Thermal Blanking Panels	9.17
19 Inch Equipment Shelf	9.17
4-Post Adjustable Shelf	9.17
RWM Series Horizontal Cable Managers	9.18
S110®/S210® Horizontal Cable Managers	9.18
Rear Cable Managers	9.18

VersaPOD® 4-Post Rack

Siemon's adjustable-depth, VersaPOD 4-Post Rack provides a stable platform for mounting extended depth/size active equipment. It is ideal for use in both Telecommunications Rooms and central patching areas within Data Centre environments.

In addition to providing compatibility with Siemon's stand alone vertical cable managers, the 4-post rack is fully compatible with the 45U Zero-U panels used in Siemon's VersaPOD cabinets. This compatibility allows for mounting of patch panels or cable management between bayed racks or at end of rows.

The headers, vertical rails and depth adjustment brackets all feature symmetrical designs to eliminate orientation errors during assembly. They also work in conjunction to self-square the rack during assembly saving valuable installation time. The result is a rack that can be field assembled in less than 20 minutes.

Field Adjustable Depth — Rack depth can be field adjusted in 25mm (1 in.) increments to accommodate a range of equipment depths

Slotted Mounting Holes — Provide a flexible securing point for ladder or wire basket trays mounted perpendicular or parallel to rack

Stamped U Space Indications — Provide ready visual indication of proper panel alignment

In-Facing Headers and Footers — Maximise floor space while maintaining full load capabilities



In addition to Siemon's stand alone vertical cable managers, the VersaPOD 4-Post Rack is compatible with Siemon's Zero-U patching and cable management panels



Eight (8) ground post locations (4 on top, 4 on bottom) provide ready accessible ground attachment points

Ordering Information:

Part #	Description
RSQ1-07-S.....	VersaPOD 4-post rack, 560 - 915mm (23 - 36 in.), steel, 45U, black, #12-24
RSQ1-07C-S.....	VersaPOD 4-post rack, 560 - 915mm (23 - 36 in.), steel, 45U, black, cage nuts*
RSQ-BAY-VPP.....	VersaPOD 4-post rack baying bracket for Zero-U panels, set of 4

Zero-U baying brackets are required to ensure proper operation of Zero-U panels.

*Includes bag of 50 M6 cage nuts.



External Dimensions:
height: 2.13m (7 ft.)
width: 560mm (22 in.)
depth: 558 - 915mm (23 - 36 in.)

1U = 44.5mm (1.75 in.)

VersaPOD 4-POST RACK SPECIFICATIONS:

U Space	45
Colour	Black
Packaging	Ships unassembled in a single carton
Standard Compliance	CEA-310-E, UL 60950, RoHS
Compatibility	RS-CNL, RS-CNL3, VPCA-6, VPCA-12, Zero-U VersaPOD Panels
Weight	48 kgs (105 lbs.), Full weight with packaging
Load Rating	907 kgs (2000 lbs.) Static load, evenly distributed

Cable Managers

The VersaPOD 4-Post Rack is compatible with the following Siemon cable management products:

- RouteIT™ vertical managers and accessories
- Vertical cable management channels
- RouteIT horizontal cable managers, HCM-(X)-(X)U
- WM series horizontal cable managers
- RWM series horizontal cable managers
- S110 horizontal managers
- Vertical patching channels

RS3 Cable Management Rack System

Siemon's RS3 series cable management rack system provides integral, high capacity cable management for routing of both horizontal/backbone cabling and patch cords. Vertical channels with hinged cable manager covers conceal and route patch cables for a clean, professional installation.

High Capacity — 76mm x 152mm (3 x 6 in.) front vertical managers provide capacity for approximately 190 Category 6 patch cords

Cable Tray Compatibility — Header bars incorporate unique slotted holes for securing cable trays routed perpendicular or parallel to RS3 racks

Deeper Channels — 116.8mm x 152.4mm (5 x 6 in.) vertical side rails provide higher cable capacity over standard rack designs

Side Stackable — RS3 design allows racks to be side-stacked without interference between adjacent racks

Flexible Management — Side rails compatible with Siemon's quarter-turn hook and loop cable managers for proper management of cable bundles

Cable Access Holes — Access holes on side rails allow cables to be routed between adjacent racks

Power Strip Compatibility — Mounting holes on rear of RS3 accommodate Siemon's vertical power strip (p/n RS-P04) and intelligent PDUs (see Section 12) to provide power to active equipment mounted in rack

Anchoring — Mounting holes provided for anchoring racks to floor



Hinged Front Covers

Front covers fully conceal all vertical patch cord routing through an easy to use, modular design. Each section can be individually hinged in either direction to facilitate quick and easy changes. Covers include positive securing snap latches for trouble-free fastening.



Rounded Managers

The individual managers on the vertical channels are rounded to allow patch cords to seamlessly enter and exit the managers without risk of cable deformation.



Matching Horizontal Managers

Siemon's RS3 series horizontal cable managers provide a fully integrated appearance and same hinging design for comprehensive management of patch cords.

RS3 Cable Management Rack System

Part #	Description
RS3-07.....	Aluminium enhanced cable management rack system, 45U black. Includes rack assembly hardware, vertical cable management channels with hinged covers, and ground lug

height: 2.1m (7 ft.)
width: 685.0mm (27 in.)
depth: 457.2mm (18 in.)

Add "S" for steel.

Note: Aluminium racks (RS3-07) are available and intended for use with connecting hardware and cable managers only. For mounting of active equipment, steel racks are recommended.

Note: 1U = 44.5mm (1.75 in.)

See Cable Management Capacity Table in the Cable Management Section of our E-Catalogue on our Website



Cable Managers

The RS3 Cable Management Rack is compatible with the following Siemon rack-mounted cable management products:

- RouteIT™ horizontal cable managers, HCM-(X)-(X)U
- WM series horizontal cable managers
- RWM series horizontal cable managers
- S110® horizontal cable managers

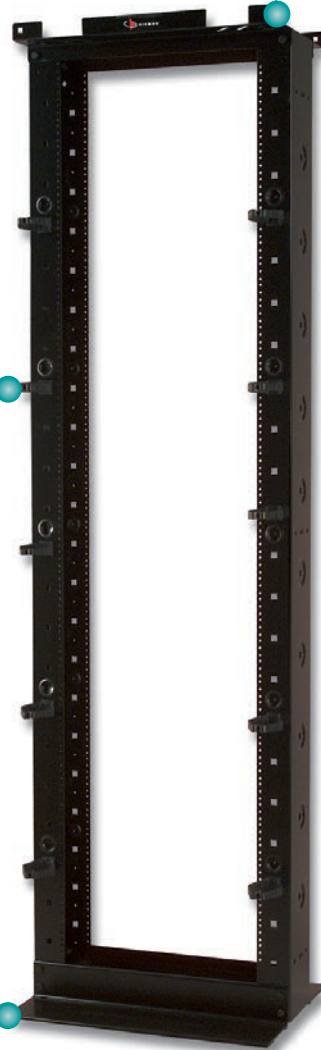
RS Rack System

Siemon's RS series cable management rack system combines a 2.1m x 0.48m (19 inch) black rack with cable management accessories to provide a complete cable management solution. Ideal for all size installations, the rack features fully usable 45U capacity.

Cable Tray Compatibility — Header bars incorporate unique slotted holes for securing cable trays routed perpendicular to or parallel with RS racks

Twist-Lock Cable Managers — High capacity twist-lock cable managers lock into place quickly without use of screws or mounting tools and can be easily located in many positions on the front, side, back, and within channel to provide customised cable management

Anchoring — Mounting holes provided for anchoring rack to floor



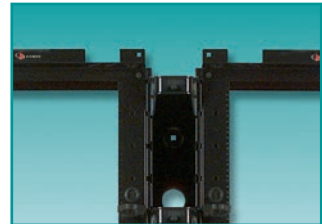
High Capacity Side Rails

76 x 152mm (3 x 6 in.) vertical side rail channels on rack provide large area for routing high volumes of horizontal or backbone cables.



Complete Management System

Comprehensive cable management can be created using Siemon's RouteIT™ Vertical and Horizontal Cable Managers.



Optional Vertical Cable Channels

Compatible with all of Siemon's vertical cable managers to allow a high volume of patch cords to be routed between two racks or within a single rack.

RS Rack System

Part #	Description
RS-07-S	Steel cable management rack system, 45U, black. Includes: rack assembly hardware, 10 high-capacity cable managers, 10 hook and loop cable managers, grommets, and ground lug <i>height: 2.1m (7 ft.)</i> <i>width: 609mm (23.8 ft.)</i> <i>depth: 457mm (18 in.)</i>

Note: Aluminium racks are available (P/N: RS-07) and intended for use with connecting hardware and cable managers only. For mounting of active equipment, steel racks are recommended.

See Cable Management Capacity Table in the Cable Management Section of our E-Catalogue on our Website



Extended Depth RS Rack System

Siemon has developed a rack for managing extra large volumes of horizontal cables. The extended depth rack features vertical channels which are 0.37m (1.2 ft.) deep. These channels include multiple mounting holes allowing the user to configure Siemon's twist-lock hook and loop cable managers for properly managing large individual bundles of cables. The footers have also been designed to retain the 0.61m (2.0 ft.) overall footprint.

Part #	Description
RS-07E	2.1 x 0.48m (19 inch) Aluminium extra-deep cable management rack system, 45U, black. Includes rack assembly hardware, 10 high-capacity cable managers, 10 hook and loop managers, grommets and ground lug <i>height: 2.1m (7 ft.)</i> <i>width: 609mm (24 in.)</i> <i>depth: 609mm (24 in.)</i>

Note: Aluminium racks are intended for use with connecting hardware and cable managers only. For mounting of active equipment, steel racks such as RS-07-S are recommended.

See Cable Management Capacity Table in the Cable Management Section of our E-Catalogue on our Website



Cable Managers

The RS Rack System is compatible with the following Siemon cable management products:

- RouteIT™ vertical managers and accessories
- Vertical cable management channels
- RouteIT horizontal cable managers with extended covers, HCME-(X)-(X)U
- WM series horizontal cable managers
- RWM series horizontal cable managers
- S110® horizontal cable magagers
- Vertical patching channels

Rack Accessories

Siemon offers a full range of accessories to allow further customisation of Siemon racking systems.

RS-VCM.

Quarter-turn hook and loop cable managers includes roll of (10) 457mm (18 in.) hook and loop black cable managers and (10) quarter-turn mounting clips



RS-CH.

Quarter-turn cable managers



SCREW-1224.

#12-24 Slotted head screws with washers, black, bag of 100



RS-CNL-MGR.

Channel retainers for use with RS-CNL and RS-CNL3



PH-3.

3U panel access hinge includes integral 1U panel with 5 removable cable managers and accepts one 2U or two 1U patch panels



VP-SPL.

Quarter-turn fibre management spool, bag of five (can be installed in VP-VP and VP-VWM panels)



Note: 1U = 44.5mm (1.75 in.)

Technical Tip!

For information on Siemon's Power Distribution Units (PDUs) see Power and Cooling Section 12.0.

Rack Hinge

Siemon rack hinges are designed to allow rack mounted patch panels to swing out (horizontally) from the rack. The hinges are available in 2 and 3U sizes which can be combined to mount 4 and 6U panels. The 2U hinge is capable of mounting one 2U or two 1U panels.

Part #	Description
RHNG-2.	Rack hinge, 2U, black
RHNG-3.	Rack hinge, 3U, black

Note: 1U = 44.5mm (1.75 in.)



Vertical Cable Management Channels

Siemon's single-sided vertical cable management channels provide an economic solution for managing large cable bundles between adjacent racks. They feature an open design with six easily configured dual-hinge managers (additional managers available separately) that enable customised management of patch cords. Cable access holes allow cords to be routed between the front and rear of the channel. Mounting holes within the channel accommodate Siemon's quarter-turn cable managers (p/n: RS-CH) and quarter-turn hook and loop cable managers (p/n: RS-VCM) for further customisation of cable routing. The channels are available in both 76mm (3 in.) and 152mm (6 in.) depths for use with standard 76mm (3 in.) racks or 152mm (6 in.) deep cable management racks such as Siemon's RS-07. Alternately, the 76mm (3 in.) deep channels can be stacked back to back with the deeper cable management racks such as Siemon's RS-07E to optimise management of cables on both sides of the channel.

RS-CNL.

Vertical cable management channel for mounting between 152mm (6 in.) deep racks (includes mounting hardware) 45U, black



height: 2.1m (7 ft.)
width: 152.4 mm (6 in.)
depth: 224.8 mm (8.9 in.)

RS-CNL3.

Vertical cable management channel for mounting between 76mm (3 in.) deep racks (includes mounting hardware) 45U, black



height: 2.1m (7 ft.)
width: 152.4 mm (6 in.)
depth: 148.6 mm (5.9 in.)



Two RS-07's shown with three RS-CNL's

See Cable Management Capacity Table in the Cable Management Section of our E-Catalogue on our Website

RS Rack System - Value Rack

Siemon's Value Rack provides an economical, durable solution for mounting and securing IT equipment in telecommunications spaces. With integrated bonding and grounding, visible U space markings and compatibility with Siemon's full range of cable management solutions, the Value Rack saves time, labour and floor space in a variety of indoor installations.



Accessibility — Open header design offers easy access for routing cables and includes holes for securing cable tray

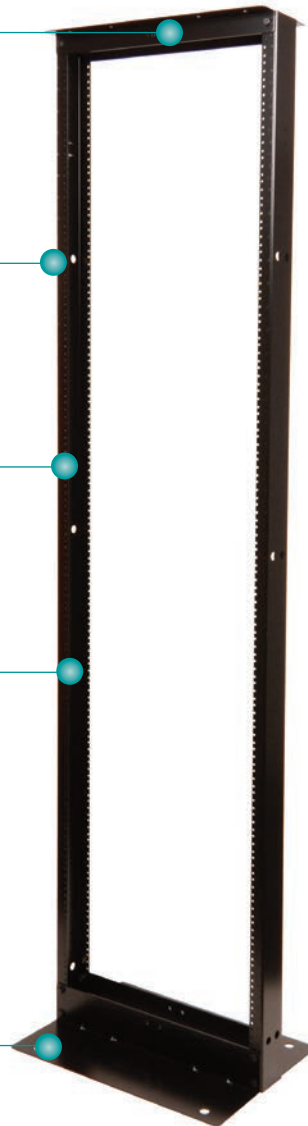
Durability — Heavy duty construction offers 544 kg (1200 lb.) weight capacity

19-in. EIA, Universal Rail Spacing —

- #12-24 threaded equipment mounting holes in 76mm (3 in.) deep channels
- U spaces marked and numbered

Easy to Assemble — Installs with standard hand tools

Stability — Mounting holes provided for bolting / anchoring to floor



Excellent U Visibility

U space markings remain visible with rack-mounted equipment installed and align with cable management fingers to ease rack unit identification and facilitate moves, adds and changes



Integrated Ground Path

Bonded assembly with integrated ground studs



Cable Management

Compatible with Siemon's full range of horizontal and vertical cable management solutions

Ordering Information:

Part #	Description
RS1-07-S	Value Rack, 2-post open frame rack, 45U, black. Includes rack assembly hardware, (30) #12-24 screws and (2) grounding nuts

SPECIFICATIONS

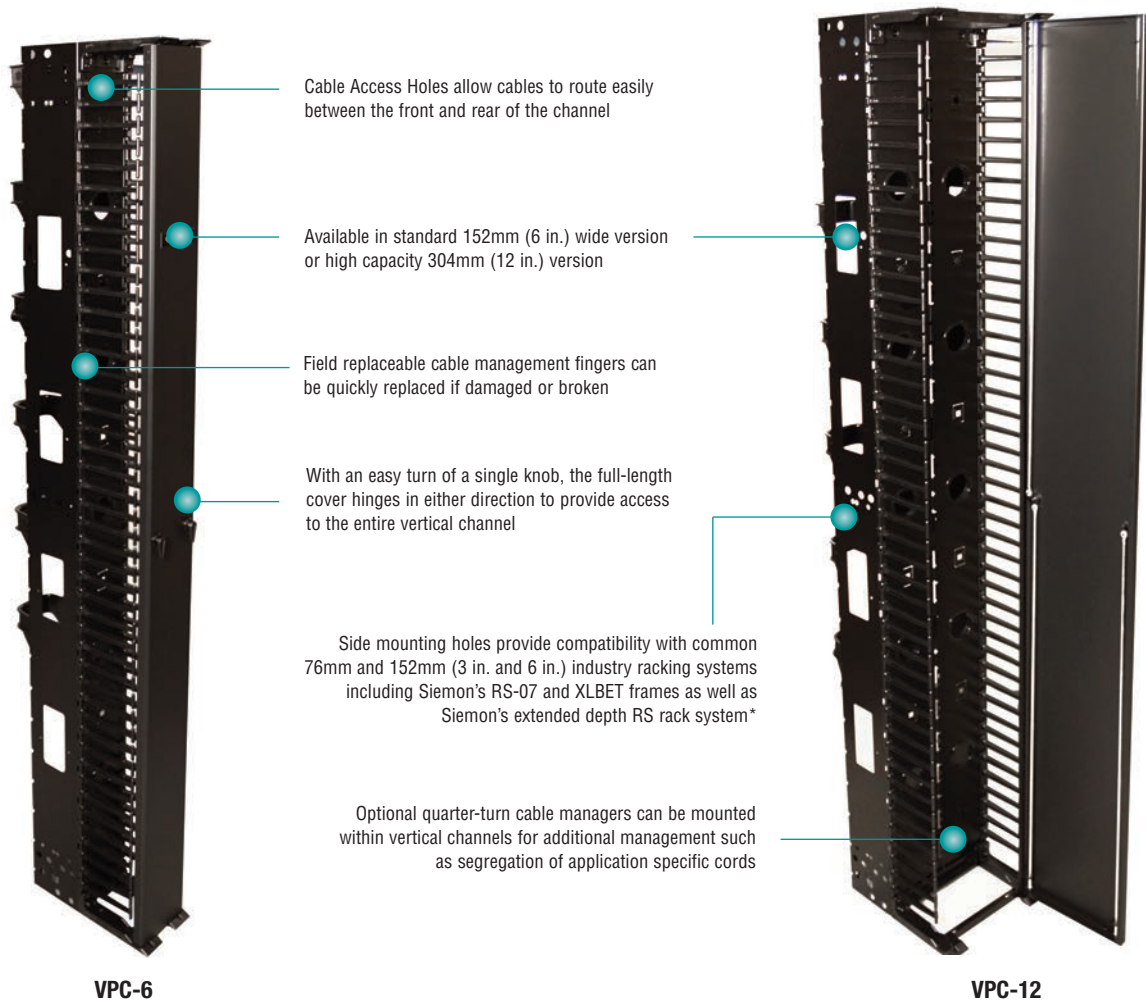
U Space	45U (1U = 1.75 in. (44.5mm))
Height	2.1m (7 ft.)
Overall Width	516mm (20.3 in.)
Rail Depth	76mm (3 in.)
Weight	21kg (47 lbs.)
Load Rating	544kg (1200 lbs.)
Material	Cold rolled steel
Finish	Painted, Black e-coat
Packaging	Ships unassembled in a compact carton
Standards Compliance	UL 1863, EIA-310-D, RoHS



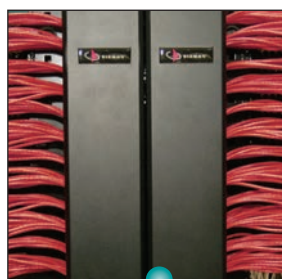
Fully compatible with Siemon's wide range of vertical and horizontal cable managers.

Vertical Patching Channel (VPC)

Siemon's enhanced Vertical Patching Channel (VPC) sets a new standard for cable management systems by improving appearance, accessibility and cable routing on both the front and rear of the rack. Designed as a stand-alone manager to be mounted between adjacent racks the VPC features a full length, hinged door on the front to conceal patch cord routing. The rear manager is open for ready routing of large bundles of horizontal/backbone cabling. With its easy access design, high capacity and professional appearance, the VPC is ideal for both installers and end users alike.



Rear channel retainers can be hinged in either direction and are removable enabling relocation to any position along the rear vertical channel



The VPC is fully side stackable for use in ultra high density environments. The doors can be individually opened 60° or adjacent doors can be removed for full access



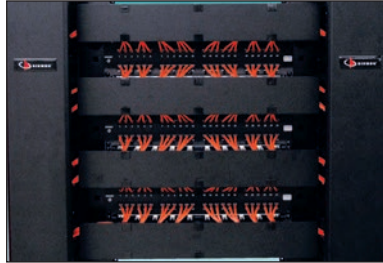
All of the cable routing points on the vertical channels are rounded to allow patch cords to seamlessly enter and exit the managers without risk of cable deformation

Note:

**When used with extended depth rack, rear channel is used for mounting purposes only.*

152mm (6 in.) Enhanced Vertical Patching Channel

Part #	Description
VPCA-6.....	2.1m x 152mm (7 ft. x 6 in.) Vertical patching channel, 45U, black. Includes front cover, 6 rear channel retainers and mounting hardware <i>height: 2.1m (7 ft.) width: 152.4mm (6 in.) depth: 304.8mm (12 in.)</i>



Comprehensive cable management can be created using Siemon's RS-07 and HCM Series horizontal cable managers

305mm (12 in.) Enhanced Vertical Patching Channel

Part #	Description
VPCA-12.....	2.1m x 305mm (7 ft. x 12 in.) Vertical patching channel, 45U, black. Includes front cover, 12 rear channel retainers and mounting hardware <i>height: 2.1m (7 ft.) width: 304.8mm (12 in.) depth: 304.8mm (12 in.)</i>



VPCA-12 shown with two RS-07 racks and angled patch panels



CABLE MANAGER CAPACITY TABLE

Part Number	Cable Diameter											
	3.30	3.81	4.32	4.83	5.33	5.84	6.35	6.86	7.37	7.87	8.38	8.89
VPCA-6 (Front)	683	513	399	319	261	218	184	158	137	120	106	94
VPCA-6 (Rear)	1059	795	619	495	405	338	286	245	212	186	164	146
VPCA-12 (Front)	1464	1100	856	685	561	467	396	339	294	257	227	202
VPCA-12 (Rear)	2118	1591	1238	991	811	676	572	491	425	372	328	293

Cable capacities reflect a calculated fill rate of 40% which is intended to reflect 100% fill during actual use due to side cable entry

VPC Accessories

Part #	Description
VCM-FGR-6.....	152mm (6 in.) Vertical cable manager replacement fingers, 9U, Set of 2



Part #	Description
VCM-DR(XX).....	Replacement door

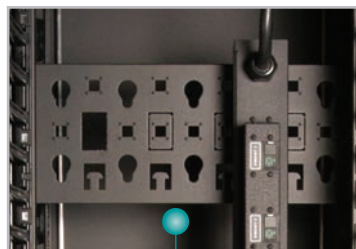
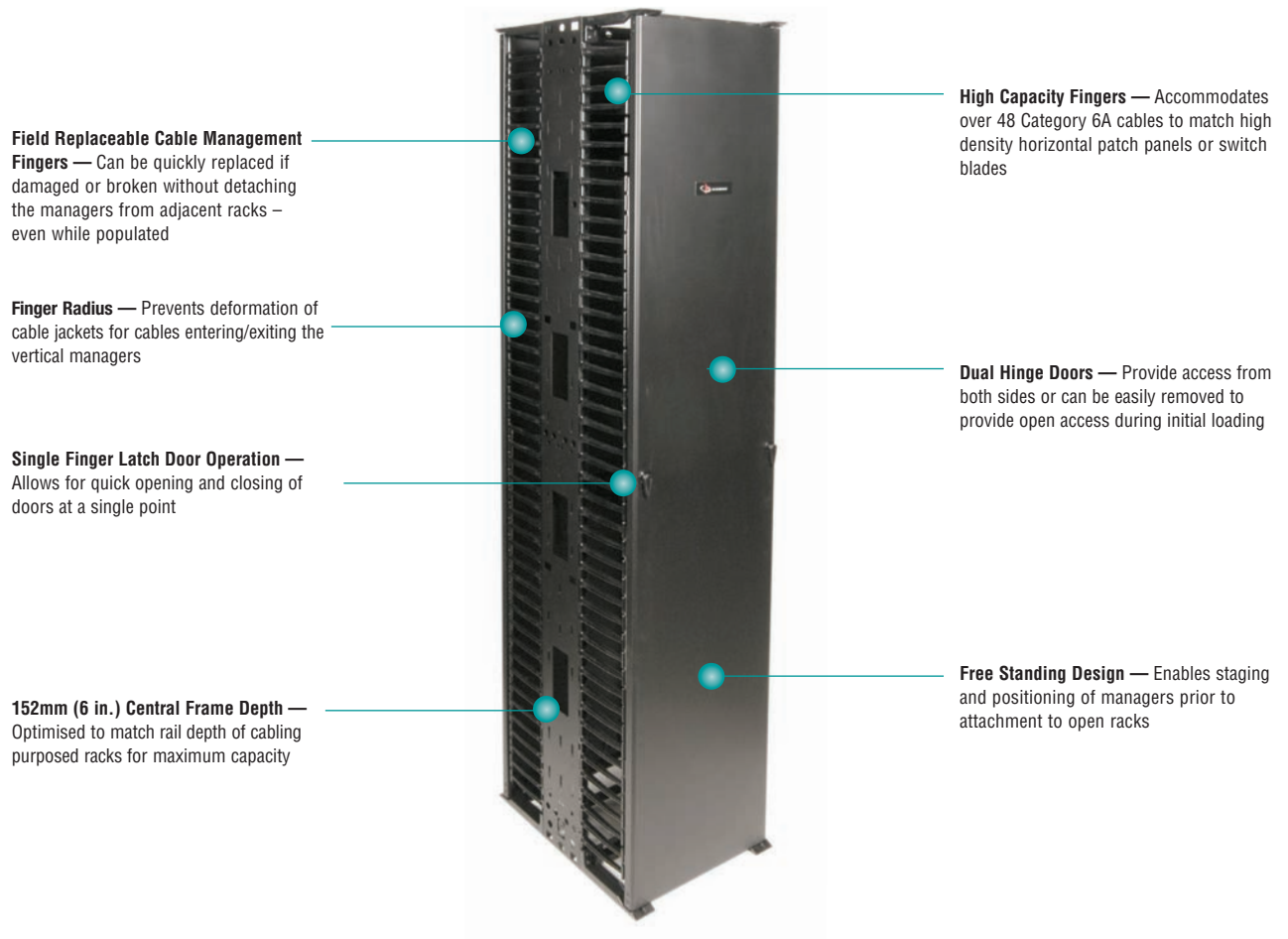
Use (XX) to specify width:
6 = 152mm (6 in.)
12 = 304mm (12 in.)



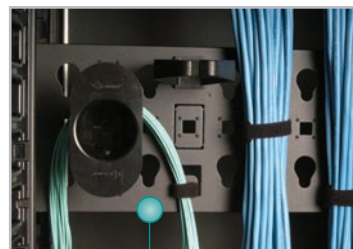
RoutelT™ Cable Managers

Siemon's RoutelT vertical and horizontal cable managers are specifically designed to readily manage the challenges proposed by today's high volume, high density cabling systems. Available in multiple sizes, these versatile cable managers provide a system solution for ready routing and protection of both horizontal cables and patch cords.

Full length, dual hinge doors protect and conceal cabling providing a premium appearance capable of supporting today's high speed network cabling systems.



PDU Ready — Multiple attachment points available for optional tool-less button mounting of PDUs within double-sided managers or on rear of single-sided managers



Diverse Mounting Points — Allow for mounting of optional Siemon quarter-turn management accessories and cable ties

Vertical Managers – Ordering Information



VCM-(XX)
RoutelT™ single-sided vertical cable manager,
45U, black

height: 2.1m (6.9 ft.)
depth: 357mm (14 in.)

Use (XX) to specify width:
6 = 152mm (6 in.),
10 = 254mm (10 in.),
12 = 305mm (12 in.),
16 = 406mm (16 in.)



VCM-(XX)D
RoutelT double-sided vertical cable manager,
45U, black

height: 2.1m (6.9 ft.)
depth: 562mm (22 in.)

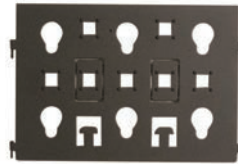
Use (XX) to specify width:
6 = 152mm (6 in.),
10 = 254mm (10 in.),
12 = 305mm (12 in.),
16 = 406mm (16 in.)

Vertical Managers – Accessories



VCM-S
2.13m x 457mm (7 ft. x 18 in.) Side
panel kit for RoutelT double-sided
vertical cable managers

*Note: Side panel kit is a two piece design
comprised of one top and one bottom
piece and includes mounting hardware*



VCM-(XX)D-RB
Vertical dividers for RoutelT double-sided
vertical cable managers, set of 3

Use (XX) to specify width:
6 = 152mm (6 in.),
10 = 254mm (10 in.),
12 = 305mm (12 in.),
16 = 406mm (16 in.)



VCM-FGR-6
152mm (6 in.) Vertical cable manager
replacement fingers, 9U, set of 2

Horizontal Managers – Ordering Information



HCM-4-(X)U
RoutelT horizontal cable manager
w/ 102mm (4 in.) fingers



HCME-4-(X)U*
RoutelT horizontal cable manager w/
102mm (4 in.) fingers and extended
length cover



HCM-6-(X)U
RoutelT horizontal cable manager
w/ 152mm (6 in.) fingers and cover



HCME-6-(X)U*
RoutelT horizontal cable manager w/
152mm (6 in.) fingers and extended
length cover

Use (X) to specify height: 1 = 1U, 2 = 2U, 4 = 4U
Add “-D” to end of part number for double-sided version (2U only)



HCM(E)-CVR-(X)U
RoutelT horizontal cable manager
replacement cover

* For use with Siemon's RS Rack System only (excludes Value Rack)

Cable Tray Rack

Designed to mount directly to overhead ladder rack or cable tray, Siemon's Cable Tray Rack delivers 4U of easily installed and accessible 19 inch rack mount space above cabinets and racks without consuming additional floor space, making it ideal for use as a Zone Distribution Area (ZDA) or Equipment Distribution Area (EDA) in data centres. Used with copper patch panels or fibre enclosures, the Cable Tray Rack can increase cabling density, improve cable routing, simplify moves, adds and changes and provide pre-cabled connectivity for rapid deployment of new cabinets, racks and equipment.



Improved Thermal Efficiency —

Helps improve airflow by managing patching fields and cabling above cabinets and racks, minimising obstruction of equipment cooling features.

Rapid Data Centre Deployment —

Can be used in conjunction with Siemon's pre-terminated copper and fibre solutions to reduce installation time.

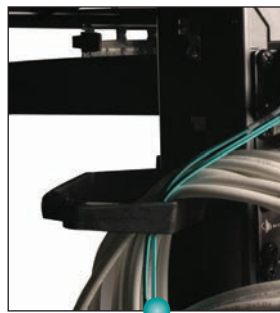
Open Compatibility —

Rack mount solution attaches to all common overhead cable tray and ladder rack systems.



Flexible Mounting —

Unique design can be mounted below, flush or above cable tray in both parallel and perpendicular configurations.



Flexible Cable Routing —

High capacity quarter-turn twist-lock cable managers lock into place quickly without use of screws or mounting tools and can be easily located to provide customised cable management.



Floor Space Maximisation —

Provides up to 6U of standard 19 inch rack mount space above cabinets and racks to maximise cabling density/ minimise data centre floor space needs.

MAJOR PRODUCT FEATURES:

- CEA-310-E compliant mounting holes
- Robust 12 gauge steel construction
- Smooth black powder coat finish
- Mounting hardware and cable management included
- 267 N (60 lbf) load rating

Ordering Information:

CTR-(XX)-01. Cable Tray Rack, black, #12-24. Includes mounting hardware, 1/4 turn cable managers, ground lugs

Size
02 = 2U
04 = 4U
06 = 6U

**Add "C" to end of part number for cage nut version (includes M6 cage nuts)*

CTR-LRK. Ladder rack mounting kit for Cable Tray Rack



Mounting Examples:



**Perpendicular to Tray
(Below)**



**Parallel to Tray
(Flush)**



**Parallel to Ladder Rack
(Below)**

WM Series Horizontal Cable Managers

The WM series cable managers provide increased strength and do not interfere with panels mounted above or below. They are a popular and economical solution for providing a clean and simple means of organising small-to-large bundles of cables and patch cords.

Part #	Description
WM-143-5.....	Horizontal cable manager with five S143 hangers, 1U, black
WM-144-5.....	Horizontal cable manager with five S144 hangers, 2U, black
WM-145-5.....	Horizontal cable manager with five S145 hangers, 2U, black

Note: 1U = 44.5mm (1.75 in.)



Cable Hangers

The cable hanger design features structural integrity and sleek appearance. These cable hangers are ideal for routing small to very large quantities of cables. The durable plastic design ensures reliability for any application.

Part #	Height	Width	Depth
S143*.....	44mm (1.7 in.).....	38mm (1.5 in.).....	89mm (3.5 in.)
S144*.....	87mm (3.4 in.).....	57mm (2.2 in.).....	74mm (2.9 in.)
S145*.....	87mm (3.4 in.).....	57mm (2.2 in.).....	125mm (4.9 in.)
S146.....	151mm (5.9 in.).....	63mm (2.5 in.).....	130mm (5.1 in.)
S147.....	254mm (10 in.).....	63mm (2.5 in.).....	130mm (5.1 in.)

*Add "-A" for optional adhesive backing.



Reusable Hook and Loop Cable Managers

These cable managers are simple, yet extremely effective when used to bundle cables. To accommodate different sized bundles, they are available in 152mm (6 in.), 305mm (12 in.), or 457mm (18 in.) lengths. They can be easily loosened and removed to service cable and then tightened and reinstalled when the cables are rebundled. The handy dispenser rolls/spools are neat, convenient and quick. Adjustable tension prevents "over-cinched" conditions. A mounting hole in each hook and loop manager enables the manager to be mounted to a wall or rack.

Part#	Description
VCM-25-(XX)-01.....	Roll of 25 cable managers
VCM-250-(XX)-01.....	Spool of 250 cable managers

Use 1st (XX) to specify length:

06 = 152mm (6 in.), holds 51mm (2 in.) diameter cable bundle
 12 = 305mm (12 in.), holds 102mm (4 in.) diameter cable bundle
 18 = 457mm (18 in.), holds 153mm (6 in.) diameter cable bundle



Wrap-around cable managers offer a simplified approach to cable management. secure it to a single cable and then wrap it around the entire bundle.



Hook and Loop cable managers have a large head for added strength and a mounting hole is included for securing to a wall or rack.

Technical Tip!

Hook and loop cable managers are recommended as an alternate to plastic cable ties for the reduction of alien crosstalk in Category 6A UTP installations.

Stand-Off Brackets

Siemon hinged stand-off brackets can be mounted to a wall with the hinge on either side for convenient access to the back of the panel. The sides of the brackets will accept our S144 or S145 cable hangers for external cable management. The brackets accept any combination of Siemon patch panels and rack-mount cable management. Mounting hardware included.



Part #
SBH-2..... 2U, black



Part #
SBH-3..... 3U, black



Part #
SBH-4..... 4U, black



Part #
SBH-6*..... 6U, black



height: See U information, width: 483mm (19 in.), depth: 152mm (6 in.)

*Add -2 for (3) independent 2U hinges (instead of a single 6U hinge).

Note: 1U = 44.5mm (1.75 in.)

Thermal Blanking Panels

Blank filler panels are ideal for installations where open or expansion rack space is to be covered. Aluminium panels are blank on one side and feature the Siemon logo on the other side.

Part #	Description
PNL-TBLNK010-1S.....	SnapFit™ thermal blanking panel for 19 inch rack, 1U, square holes, black, plastic, package of 10
PNL-TBLNK100-1S.....	SnapFit thermal blanking panel for 19 inch rack, 1U, square holes, black, plastic, box of 100
PNL-BLNK-(X).....	Blank filler panel for 19 inch rack, black



Use (X) to specify rack mount space height of panel: 1 = 1U, 2 = 2U, 3 = 3U, 4 = 4U

Note: 1U = 44.5mm (1.75 in.)

19 Inch Equipment Shelf

Siemon's double-sided 19 inch equipment shelf is designed to support heavy equipment loads up to 68.1 kg (150 lb.). The shelf is designed for use with any 152mm (6 in.) deep rack and is secured to the front and rear of the rack channels. Shelf accommodates equipment up to 432mm (17 in.) wide.

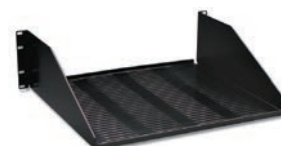
Part #	Description
SH-D19-01.....	Double-sided equipment shelf, for 152mm (6 in.) deep racks, solid, 3U, black height: 133mm (5.2 in.) width: 483mm (19 in.) depth: 457mm (18 in.)



SH-D19-01

Single sided solid and vented equipment shelves are ideal for mounting devices in standard 19 inch racks and cabinets. Supports equipment up to 22.7kg (50 lbs.) in weight and 438mm (19 in.) in width.

SH-S19-01.....	Single-sided equipment shelf, solid, 3U, black
SH-S19V-01.....	Single-sided equipment shelf, vented, 3U, black height: 133mm (5.2 in.) width: 483mm (19 in.) depth: 381mm (15 in.)



SH-S19V-01

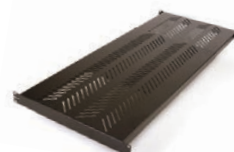
Note: 1U = 44.5mm (1.75 in.)

4-Post Adjustable Shelf

Shelves feature a robust, low profile design occupying only 1U of rack or cabinet space while listed to UL 2416 for support of up to 136kg (300 lb.) of weight

Part #	Description
V-SHV1-01-1U.....	4-Post, adjustable shelf, vented, 559-787mm (22- 31 in), black, 1U
V-SHV2-01-1U.....	4-Post, adjustable shelf, vented, 787-1016mm (31- 40 in), black, 1U

Note: 1U = 44.5mm (1.75 in.)



V-SHV1-01-1U

RWM Series Horizontal Cable Managers

The multi-access horizontal cable managers are designed to provide both front and rear cable management in a compact, 1U space. The managers feature high capacity slots for entering and exiting cables, removable covers to conceal patch cords, and an innovative cable retention design to prevent patch cords from falling out when the covers are removed. The rear of the RWM-1 features attachments for using Siemon's hook and loop cable managers.

Part #	Description
RWM-1.....	Single-sided horizontal cable manager with cover, 1U, black
RWM-1DS.....	Double-sided horizontal cable manager with covers, 1U, black

Note: 1U = 44.5mm (1.75 in.)



RWM-1



RWM-1DS

S110®/S210® Horizontal Cable Managers

The S110/S210 cable managers provide an economical, superior cable management solution in a compact space. 1U and 2U size and large capacity provide excellent cable management for 19 inch rack mount installations.

Part #	Description
S110-RWM-01.....	S110/S210 horizontal cable manager with covers, black, 1U
S110-RWM2-01.....	S110/S210 horizontal cable manager with covers, black, 2U

Note: 1U = 44.5mm (1.75 in.)



Rear Cable Manager

Siemon rear cable manager can be mounted to the back side of a double-sided 19 inch rack, or can be mounted between a patch panel and the front face of the rack, using the same screws that hold the patch panel to the rack and the hex nuts provided. It provides strain relief anchor points and organisation of horizontal cables being routed to the back of the patch panel.

WM-BK.....	Rear cable manager with mounting screws and hex nuts
------------	--



