

Fire and security containment systems

www.marshall-tufflex.com

A range of products
designed to British
Standard regulations,
specifically suited for
wiring fire alarm
systems and for
protection
against fire.



Callmaster accessory boxes are designed for emergency applications including call points, smoke and heat detectors, panic alarms, warning lights, sounders and emergency stops.

Product information

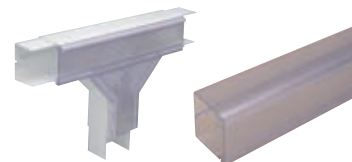
- Callmaster accessory boxes come complete with both internal pot retainers for mineral insulated (MI) cables and cable clamps included for use with conventional and fire performance cable
- No need for cable glands and shrouds
- Available with one or two entries for terminal or through wiring
- Suitable for single or twin cable runs to each entry
- Compatible for use with MMT2 red or white mini trunking

Standard colours	
WH	RD
WH: White RD: Red	



Clear maxi and mini trunking

is available and particularly useful for high security installations. For further information please contact our technical team on 01424 856688.



Trunking and fittings



Mini-trunking

code	size	pack
MMT2RD	25 x 16mm	30 x 3m
MMT2WH	25 x 16mm	30 x 3m



Coupler

code	description	pack
TC2RD	MMT2	40
TC2WH	MMT2	40



End cap

code	description	pack
TEC2RD	MMT2	100
TEC2WH	MMT2	100



Internal bend

code	description	pack
TIB2RD	MMT2	30
TIB2WH	MMT2	30



External bend

code	description	pack
TEB2RD	MMT2	30
TEB2WH	MMT2	30



Flat bend

code	description	pack
TFB2RD	MMT2	30
TFB2WH	MMT2	30



Equal tee

code	description	pack
TT2-2RD	MMT2	30
TT2-2WH	MMT2	30

Boxes



1G accessory box – 1 entry

code	depth	pack
MCM10RD	35mm	5
MCM10WH	35mm	5

with earth terminal



1G accessory box – 2 entry

code	depth	pack
MCM20RD	35mm	5
MCM20WH	35mm	5

with earth terminal



Circular accessory box

code	depth	pack
MCMR20RD	24mm	5
MCMR20WH	24mm	5

with earth terminal



Double back entry (loop-in) 34mm internal depth

code	fix. centre	pack
MDCRB2WH	50.8/60.3mm	10

Ø cut out = 70mm



Single back entry 34mm internal depth

code	fix. centre	pack
MDCRB1WH	50.8mm	10

Ø cut out = 64mm



20mm plain body cable glands

code	cable dia.	pack
MCGP2WH	7-10.5mm	25
MCGP2AWH	4-7mm	25



Plain bored circular boxes

code	type	pack
2MRB2WH	Terminal-1E	20
2MRB3WH	Through-2E	20
2MRB4WH	Angle-2E	20
2MRB5WH	Tee-3E	20
2MRB13WH	U-2E	20

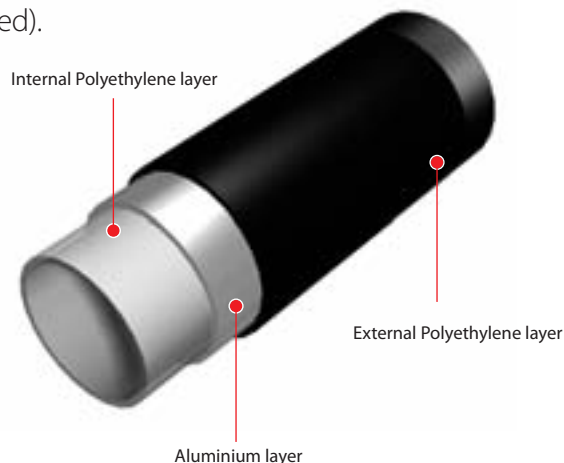
For use with 20mm plain body cable glands and ø20mm conduit

MT Supertube FR Plus is a LSOH, 3-layer heavy gauge conduit that has been specifically formulated to withstand temperatures up to 289°C. Comprising polyethylene internal and external layers over a continuous aluminium tube that provides additional mechanical strength. MT Supertube FR Plus has excellent EMI/EMC screening performance and meets the requirements of LUL (London Underground Ltd) engineering standard 2-01001-002 issue A1, material classification EQ/1 9 equipment/limited and dispersed).

Product information

- 20mm and 25mm
- LSOH conduit
- Excellent screening performance
- Suitable for rail, marine and tunnel applications
- ZERO WASTE: available in continuous lengths of up to 100 metres, meaning fewer fittings per installation
- Longer lengths also prevent ingress of water
- Extra security
- Suitable for in-screed applications
- Withstands temperatures from – 40°C to + 289°C
- Nail penetration: MT Supertube FR Plus, complies with requirements for BS 7671, BS 8436 and BS EN 61386

Standard colours	
WH	BK
WH: White BK: Black	

**MT Supertube – standard version**

A standard version of MT Supertube is available. Please refer to Conduit Systems section on page 174 for more information.

Coils and lengths

**MT Supertube FR plus (coiled)**

code	size	pack
220FR10BK	20mm	100m
225FR05BK	25mm	50m

available in black or white

MT Supertube FR plus (lengths)

code	size	pack
220FR03WH	20mm	30 x 3m
225FR03WH	25mm	30 x 3m

available in black or white

Tools

**Tube cutter**

code	size	pack
20001	16-25mm	1

**Stripping tool (pre-set)**

code	size	pack
20002	16-25mm	1

**Compact tube bender**

code	size	pack
20003	20-25mm	1

Taper fit accessories for MT Supertube FR Plus

Product information

- Boxes have provision to accept a 4mm earthing screw.
- All boxes are designed to comply with the requirements of BS 7671
- Boxes are supplied with conduit retaining screw
- Taper fit accessories provide earth continuity

Standard colours

WH

BK

WH: White BK: Black

Options: Optional colours and finishes are available but these may be subject to longer lead times and minimum quantity orders. For further information telephone 01424 856688.

Taper entry



Conduit retaining screw

Boxes (metal)

**Loop-in box**

code	size	pack
22071BK	20mm	10

**Terminal box**

code	size	pack
22072BK	20mm	10
22572BK	25mm	10

**Tee box**

code	size	pack
22075BK	20mm	10
22575BK	25mm	10

**Through box**

code	size	pack
22073BK	20mm	10
22573BK	25mm	10

**Angle box**

code	size	pack
22074BK	20mm	10
22574BK	25mm	10

**Flush lid**

code	size	pack
20007BK	20mm	1

Fittings (metal)

**Female adaptor with brass bush**

code	size	pack
22077BK	20mm	10
22577BK	25mm	10

**Male adaptor thread insert**

code	size	pack
22078MF*	20mm	10
22578MF*	25mm	10

*MF = mill finish

**Coupler**

code	size	pack
22079BK	20mm	10
22579BK	25mm	10

Fittings (polycarbonate)

**Spacer bar snap saddle LSOH**

code	size	pack
22051BK	20mm	100

**Spacer bar saddle LSOH**

code	size	pack
22552BK	25mm	100

**U-clip LSOH**

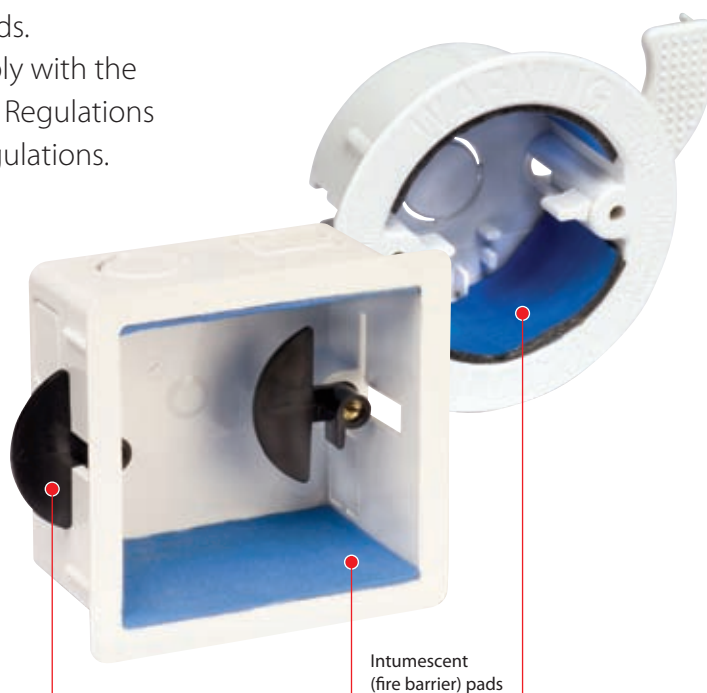
code	size	pack
22053BK	20mm	100
22553BK	25mm	50

Marshall-Tufflex dry lining boxes are now available with Envirograf® intumescent (fire barrier) pads.

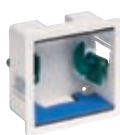
With fire barrier pads fitted, boxes comply with the requirements of BS7671:2008 IEE Wiring Regulations and Document B of the UK Building Regulations.

Snap out clamps with size identification by colour:

Wall thickness adjustment	Clamp colour
1 - 9mm	Grey
6 - 14mm	White
18 - 25mm	Green
9 - 26mm	Black



Snap out clamps



1 gang 34mm internal depth

code	adj.	pack
MDLB3FWH	1-9mm	20
MDLB1FWH	6-14mm	20
MDLB7FWH	18-25mm	20

2 gang 34mm internal depth

code	adj.	pack
MDLB4FWH	1-9mm	10
MDLB2FWH	6-14mm	10
MDLB8FWH	18-25mm	10

Note: adj. = adjustment

Dual gang 34mm internal depth

code	adj.	pack
MDLB20FWH	1-9mm	5
MDLB22FWH	6-14mm	5
MDLB24FWH	18-25mm	5

Acoustic hoods

For information on acoustic pads please refer to page 181.

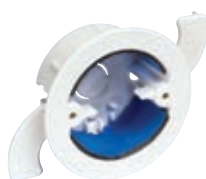


1 gang 46mm internal depth

code	adj.	pack
MDLB29FWH	9-26mm	10

2 gang 46mm internal depth

code	adj.	pack
MDLB30FWH	9-26mm	10



Single back entry 34mm internal depth

code	fix. centre	pack
MDCRB1FWH	50.8mm	10

Ø cut out = 64mm

Double back entry (loop-in) 34mm internal depth

code	fix. centre	pack
MDCRB2FWH	50.8/60.3mm	10

Ø cut out = 70mm

Problem



Without pads

Solution



With pads

In the event of a fire, the cover plate of a socket, switch or light fitting may sag and disintegrate, leaving a perfect escape route for a fire to travel up the cavity, into an adjoining room or ceiling. When Envirograf® pads are fitted, they will expand in the presence of heat and create an effective fire barrier. This solution has been specifically designed to help electrical contractors and building design professionals meet and comply with the current regulations.

Fire Protection is also available for other Marshall-Tufflex product ranges. Wraps can be supplied around PVC-U trunking or conduit systems and pillows to fill a trunking void. Many different shapes, sizes and thicknesses are available so for further details please contact our Technical Hotline on 01424 856688.

