

## Infrared inspecting for building and facilities maintenance

*How to find problems lurking behind the scenes*

### Application Note



Surface temperature can tell you a lot about a building's structural elements, plumbing installations, and HVAC and electrical systems. Problems that are otherwise invisible to the naked eye are suddenly clear as day when you look through an infrared lens. Air leakage, moisture accumulation, blockages in pipes, structural features behind walls and overheating electrical circuits can all be detected and visibly

documented with handheld infrared thermometers and thermal imaging cameras. By scanning surfaces with such inspection tools, you can quickly locate temperature variations, which are often indications of underlying problems, and document them with detailed images in reports.

By pinpointing potential sources of problems, you also save valuable inspection time and repair only what needs to

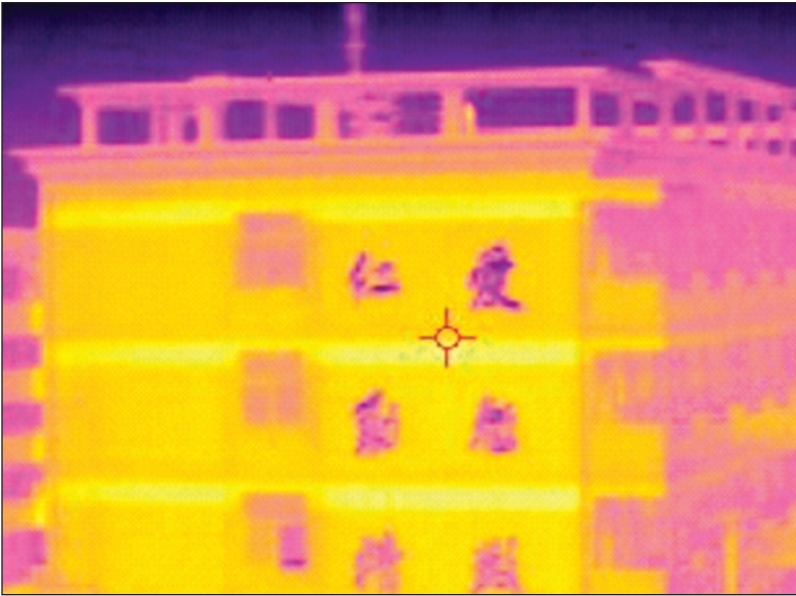
be fixed, rather than performing repairs regardless of actual need. Repeated temperature measurements of the same targets can determine whether repairs were successful and help anticipate future repairs.

#### **Simply point, shoot and read**

Infrared thermometers measure the infrared energy emitted from surfaces and convert the information into a temperature reading. They are easy to operate – simply point the instrument at the target, pull the trigger and read the temperature value. Because you're measuring from a distance, instead of having to touch the object with a probe, you can check temperatures on operating equipment and in hard-to-reach spaces safely and without special setup. Laser sighting helps you easily mark small targets from optimal distances in low light and in tight spaces.

#### **More than temperature readings**

The latest generation of infrared thermometers includes temperature comparison and documentation features to better support your inspection efforts.



Infrared imaging cameras, such as the Fluke Ti30™ Thermal Imager, can identify thermal anomalies within new or existing buildings.

These features include data logging, or the ability to store temperature readings for multiple locations along an inspection route, and audible alarms set by the user to indicate temperatures above and below acceptable ranges.

### Looking behind the scenes

Thermal imaging cameras are another kind of handheld infrared temperature measurement tool. These devices immediately show you the hot and cold spots in the form of thermal images. Traditionally, the high price tag of thermal imagers has been prohibitive, leading many facilities to outsource thermography inspections only once a year. However, new lower cost high-performance cameras make it possible to bring thermal imaging in house. Thermal surveys can identify and establish the extent of thermal anomalies within new or existing buildings, for example:

**Inspecting electrical systems:** Locate overheating components safely in electrical systems, expressed as hot spots in thermal images. Regular inspections of electrical installations should be conducted at full load to identify potential problems, such as loose connections, load imbalance, and overloads, which, when not attended to,

can lead to outages, equipment damage, and safety risks including fire.

### Checking for missing and damaged insulation:

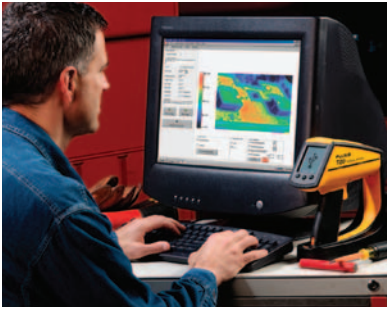
Inspections both inside and outside structures show you the location, shape and intensity of insulation. Recent amendments to Parts L1 (Dwellings) and L2 (Non-Domestic Structures) of the UK Building Regulations, which came into force in 2002, place particular emphasis on insulation continuity throughout the structure. Key to building conformance is that those responsible for achieving compliance can document that infrared thermography inspections have documented that “insulation is reasonably continuous over the whole visible envelope.”

### Pinpointing air leakage points:

UK Building Regulations also place emphasis on greatly reducing air leakage, or the uncontrolled movement of air into and out of a building, which can compromise the efficiency of building environmental systems. While best



Obtain high-quality thermal images with a simple “click” of the trigger.



**Download images and data into the companion Fluke InsideIR software for analysis and reporting.**

measured with pressurization testing, thermographic surveys can quickly pinpoint leakage points. Inspections inside and outside of structures, along doors, windows, vents and pipes, immediately show you areas of infiltration and exfiltration.

**Finding areas of moisture**

**accumulation:** Moisture intrudes through joints and cracks in roofs, ceilings and walls, and is trapped, resulting in structural rot and mold, some of which may represent serious health hazards. Regular thermographic inspections, inside and outside of structures, are therefore critical to quickly locate cold spots, which are often signs of moisture intrusion.

**Verifying structural elements:**

Thermographic inspections can help you quickly locate support beams, pipes, electrical cables, and flues in poured walls, floors and ceilings. Simply scan surfaces, and detailed thermal images clearly show you subsurface details.

**Evaluating building materials:**

Test the performance of interior and exterior wall surfaces, doors and windows under various environmental conditions to determine their ability to retain

or reflect heat and cold. A thermal imager will show you energy leaks.

**What you need to get started**

To perform your own thermal imaging inspections, you'll need:

- Thermal imager with fast scanning speed, sharp image quality, long battery life and on-board storage of several images to enable uninterrupted inspections in the field.
- Software to adjust images, analyze results, and document findings in reports.
- Training on how to use the equipment to get the best results.

In summary, there are a number of reasons why you should add temperature inspections to your building

and/or maintenance inspection checklist. Most importantly, thermographic surveys can save you a lot of time and effort in locating existing and potential problems, which can jeopardize not only building performance, but also compliance with building, health and safety regulations.

More information about non-contact infrared thermometry and thermal imaging can be found at [www.fluke.com/iaa\\_imager](http://www.fluke.com/iaa_imager).



**The Fluke T130 Thermal Imager provides the lowest total ownership cost for a full-featured, radiometric imager. The package includes all necessary hardware, software and training.**

## Ordering information

The Fluke Ti30™ Thermal Imager is sold exclusively through thermography representatives. To request a demonstration or order a Ti30 imager, visit [www.fluke.com/thermography](http://www.fluke.com/thermography) or call (800) 866-5478.

*The Fluke Ti30 Thermal Imager, formerly the Raytek® ThermoView™ Ti30 Thermal Imager, is now part of the Fluke line of test and measurement equipment.*

**Fluke.** *Keeping your world up and running.*

### **Fluke Thermography**

PO Box 1820, Santa Cruz, CA USA 95061-1820

Fluke Thermography Europe  
Blankenburger Straße 135  
D-13127 Berlin  
Germany

For more information call:

In the U.S.A. (800) 866-5478 or  
Fax (831) 425-4561 or  
[Ti30support@fluke.com](mailto:Ti30support@fluke.com)

In Europe/M-East/Africa +49 30 478 00 80 or  
Fax +49 30 471 02 51 or  
[Ti30support.de@fluke.com](mailto:Ti30support.de@fluke.com) or  
International (831) 458-1110 or  
Fax (831) 458-1239 or  
[Ti30support@fluke.com](mailto:Ti30support@fluke.com)  
Web access:  
<http://www.fluke.com/thermography>

©2005 Fluke Corporation. All rights reserved.  
Specifications subject to change without notice.  
Printed in U.S.A. Printed in U.S.A. 2/2005  
2436027 A-US-Rev A