

# Aluminium trunking systems

[www.marshall-tufflex.com](http://www.marshall-tufflex.com)

Aluminium cable containment is an excellent choice of material for office areas that need a stylish but mechanically robust trunking and for industrial, workshop and laboratory installation, particularly where a high quality of screening performance is required.



## Aluminium trunking systems

The physical properties of aluminium offer the building industry a high quality material that is very suitable for internal cable management distribution. Aluminium is light to handle with a mechanical strength and impact-resistance that is superior to steel. Extruded sections provide attractive profiles and products are finished with a high quality, powder-coat that provides a blemish-resistant surface.

Aluminium perimeter trunking systems provide the specifier, contractor and end-user with elegant, stream-lined containment that offers the practical advantages of inherent LSOH (low smoke zero halogen) and screening properties. Aluminium is an excellent choice for office and educational areas requiring a stylish yet robust trunking system, particularly effective where a high quality of screening performance and security is required.

Marshall-Tufflex offer a wide range of multi-compartment aluminium trunking in different heights, designs, cable capacities and numbers of compartments so whatever the requirements, there will always be a perfect solution with Marshall-Tufflex.

Cable Management...we've got it covered

### Standard colour

The standard colour for each Marshall-Tufflex range is shown within each relevant product information section, although silver grey 9006 is our most popular colour option in aluminium trunking.

The below table identifies the relevant RAL colour reference for all our standard colour options, dependent on product range. However we would be happy to quote for any other colour requirements, please see the Special Colours section.

Material	Standard colour	Colour code suffix	RAL
Aluminium	Silver Grey White	SG WH	9006 9016

Standard Colours	
WH	SG
WH: White SG: Silver Grey	

Please note that it is dependent on the product range as to which colour is available as standard.

### Special colours

To help enhance the style of an installation, different variations of solid colour are sometimes required.

We can provide special colours in a painted solution dependent on your client's preference. All special colour requirements will need to be specified as a RAL colour.

Please note that these colours are made to order and therefore are subject to set up charges and a longer lead time. For more information and a quotation contact our Technical Team on 01424 856688.





### Environmental

- Aluminium is naturally found combined in over 270 different minerals, the chief source of which is bauxite ore.
- Its light weight means less strain on supporting structures, easier handling and reduced transport costs.



### Recycling and sustainability

- 100% recyclable material.
- Can be recycled many times without loss of quality.
- Recycling facilities are well established.



### EMI protection

- (Electromagnetic interference)
- First class EMI screening performance especially at higher frequencies.



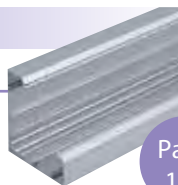
### Fire performance

- Aluminium systems specified with polycarbonate fittings meet accepted requirements for LSOH.
- Withstands high temperatures with a melting point of 660.32 °C (1220.58 °F).
- Polycarbonate fittings are fire rated to UL94V0.
- ABS fittings are fire rated to UL94V0.

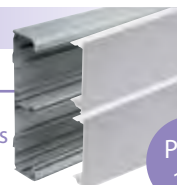
All aluminium systems are available with standard powder coat finishes in white RAL 9016 or silver-grey RAL 9006. For other finishes, please call our Technical Team on 01424 856688.

**Bench trunking****105 x 105mm**

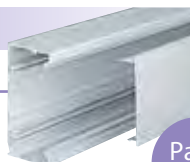
Desk and laboratory trunking.

Page  
137**Twin Plus****210 x 57mm**

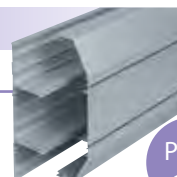
Large capacity dado and skirting trunking with two deep compartments with in-built segregation of power and data.

Page  
134**Elegance 110****110 x 55mm**

Dado trunking with a single cover.

Page  
118**XL Trunking 301****220 x 65mm**

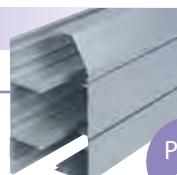
Dado trunking with three deep compartments.

Page  
126**Elegance 170****170 x 55mm**

Dado trunking with a single cover.

Page  
120**XL Trunking 302****220 x 65mm**

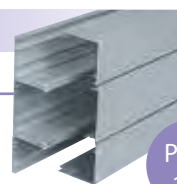
Skirting trunking with three deep compartments

Page  
126**Sterling Profile 3001****167 x 50mm**

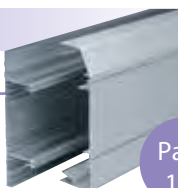
Dado trunking with three separate compartments and individual covers for each compartment.

Page  
122**XL Trunking 303****220 x 65mm**

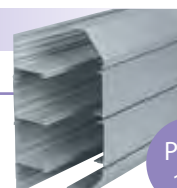
Dado and skirting trunking with three deep compartments

Page  
126**Sterling Profile 3002****167 x 50mm**

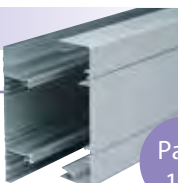
Skirting trunking with three separate compartments and individual covers for each compartment.

Page  
122**XL Trunking 311****308 x 65mm**

Dado trunking with four deep compartments.

Page  
130**Sterling Profile 3003****167 x 50mm**

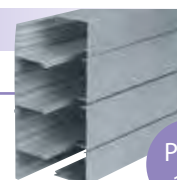
Dado and skirting trunking with three separate compartments and individual covers for each compartment.

Page  
122**XL Trunking 312****308 x 65mm**

Skirting trunking with four deep compartments.

Page  
130**XL Trunking 313****308 x 65mm**

Dado and skirting trunking with four deep compartments.

Page  
130

**Note:** use the rule on the left of this page to check profile sizes.

## MT32 Prefabricated and modular wiring systems

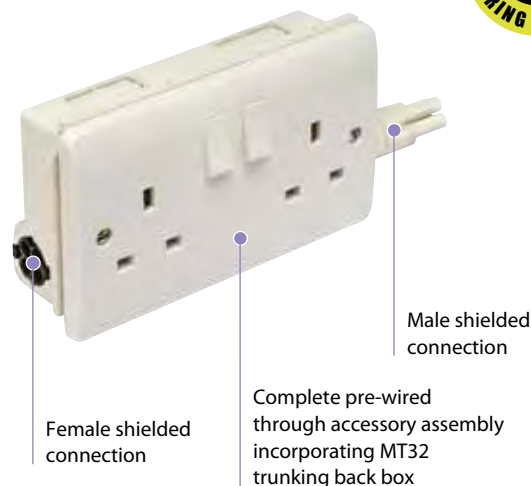
MT32 Prefabricated and modular wiring systems are designed to take all the hard work out of electrical installations by providing the complete pre-wired, pre-tested, plug and play electrical wiring system.

MT32 is a modular plug and play system designed to simplify electrical installation of power within perimeter trunking and underfloor installations. The system provides fast, safe, labour and cost saving installations that comply with BS 8488:2009 for prefabricated wiring systems intended for permanent connection in fixed installation.

The range of pre-wired, pre-tested and assembled interconnecting leads and accessory modules incorporating the Marshall-Tufflex compact 32Amp connector.

### Product information

- 32Amp rated system
- Available as LSOH 3 core 2.5mm<sup>2</sup> flex system specification that meets the requirement for high integrity earthing
- Suitable for ring and radial circuits
- Circuit testing only required on completion of final layout
- Reduced installation time – no cutting required on site
- Reduced health & safety risk



p214

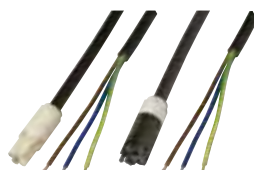
### Technical Information

Pre-wired accessories



Extension cable 2.5mm<sup>2</sup>

code	length	pack
AA3330	0.5m	1
AA3331	1.0m	1
AA3332	1.5m	1
AA3333	3.0m	1
AA3335	5.0m	1



Connection cable free end 2.5mm<sup>2</sup>

code	length	pack
AA3732 (male)	1.5m	1
AA3532 (female)	1.5m	1



Male and female adaptors 2.5mm<sup>2</sup>

code	length	pack
AA7211 (male)	220mm	1
AA7212 (female)	220mm	1

For adapting distribution board to modular system  
Note: to fit 20mm knockout

### MT32 Connectors

The description 'male' (white) and 'female' (black) does not refer to the connector pins but describes and identifies the moulded connector housings.

For further information please contact our Technical Team on 01424 856688.



Adaptor cables 2.5mm<sup>2</sup>

code	length	pack
AA8901 (male/male)	0.5m	1
AA8902 (female/female)	0.5m	1

Required for ring circuit



Terminal block 2.5mm<sup>2</sup>

code	size	pack
AA6510 (female/male)	2.5mm <sup>2</sup>	1



Pre-wired accessory 2.5mm<sup>2</sup>

code	size	pack
AA6221	2 gang	1

Elegance 110 aluminium is a small, rectangular, dado trunking system with a single cover. It is particularly useful for workshop or laboratory supply or in a commercial environment where extra mechanical strength is necessary.

#### Product information

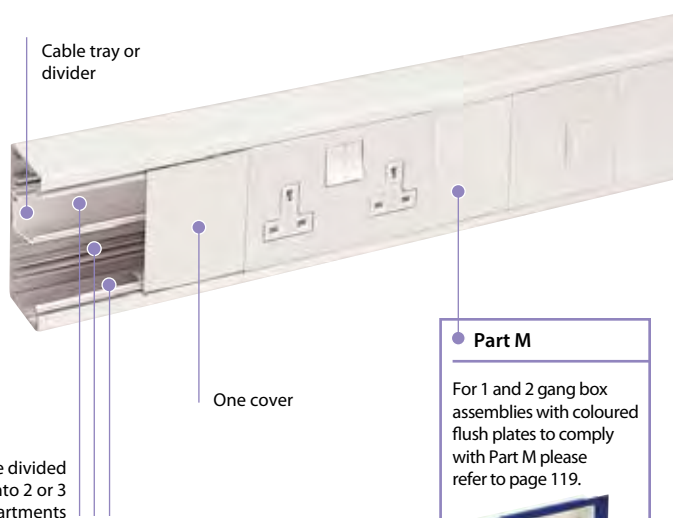
- 110 x 55mm
- Can be sub-divided into 2 or 3 compartments
- Suitable for dado applications
- Fully compatible with Marshall-Tufflex flush power and data accessories and standard UK wiring power and accessories

Standard Colours	
WH	SG
WH: White SG: Silver grey	

**Colour code suffix:** to indicate the finish you require, add the required colour code to the end of the product code.

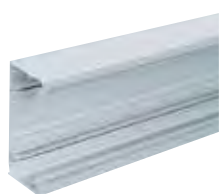
**Colour options:** optional colours and finishes are available but these are subject to minimum quantity orders and longer lead times.

For more information contact the Technical Team on 01424 856688.



#### Part M

For 1 and 2 gang box assemblies with coloured flush plates to comply with Part M please refer to page 119.



Base unit

code	pack
LTB2SG	1



Main compartment cover

code	pack
LTL1SG	1

p245

Technical Information



End Caps (Screws included)

code	pack
LECPSSG	1



Dividing fillet (pre-punched)

code	length	pack
LP1005	1.45m	1



Dividing fillet

code	description	pack
LDF1	unscreened	8 x 3m



Internal bend

code	pack
LIBPSSG	1



External bend

code	pack
LXBPSSG	1



Flat angle

code	pack
LFASSG	1



Flat tee

code	pack
LFTSSG	1

Basic components

Fittings

ALUMINIUM TRUNKING SYSTEMS



## Components



## RCD/MCB Housing

code	pack
EAHC1MWH	1

\*Up to 4 modules can be accommodated

**Note:** RCDs and MCBs are not supplied by Marshall-Tufflex



## Earth bonding kit

code	pack
LBT3	1

## Bonding assemblies



## Bonding terminal assembly

code	description	pack
LBT1	incoming 16mm <sup>2</sup>	5



## Bonding strap

code	description	pack
LBS1	base to base 32Amp	5



## Bonding strap

code	description	pack
LBS2	cover to base	5



## End cap bonding strap

code	description	pack
LBS5		1

## Coupler Pin

code	description	pack
LDP1	ø2.5 x 20mm	10

To aid alignment of base profiles

1 gang accessory box  
30mm deep

code	description	pack
ESSB1SG	ABS	1
ESSB401WH	polycarbonate	1

2 gang accessory box  
30mm deep

code	description	pack
ESSB2SG	ABS	1
ESSB402WH	polycarbonate	1

## Part M

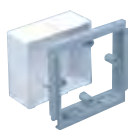
1 and 2 gang box assemblies are available to comply with the requirements of Part M (DDA).



## Part M box assembly

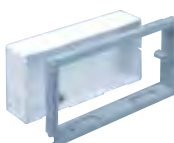
code	description	pack
ESPM1BU	1 gang - blue plate	1
ESPM1CH	1 gang - charcoal plate	1
ESPM1RD	1 gang - red plate	1
ESPM1GN	1 gang - green plate	1
ESPM1LG	1 gang - light grey plate	1
ESPM2BU	2 gang - blue plate	1
ESPM2CH	2 gang - charcoal plate	1
ESPM2RD	2 gang - red plate	1
ESPM2GN	2 gang - green plate	1
ESPM2LG	2 gang - light grey plate	1

## Boxes and plates



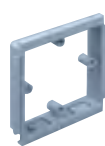
## 1 gang adjustable depth box

code	depth	pack
EAB1SG	32 - 40mm	1



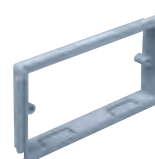
## 2 gang adjustable depth box

code	depth	pack
EAB2SG	32 - 40mm	1



## 1 gang accessory plate

code	pack
ESSP1SG	1



## 2 gang accessory plate

code	pack
ESSP2SG	1

## Screened boxes

## Screening

Conductive spray (CS) is unique to Marshall-Tufflex and is applied in the factory to provide screening from electromagnetic interference to data and communications cabling within trunking systems. The coating is applied to a range of data boxes, covers, clip-on components and fabricated fittings.

**WARNING:** A CS coating is not suitable for low voltage circuits.



## 1 gang screened accessory box

code	depth	description	pack
ESSB1SWH*	30mm	PVC-U	20

## 2 gang screened accessory box

code	depth	description	pack
ESSB2SWH*	30mm	PVC-U	10

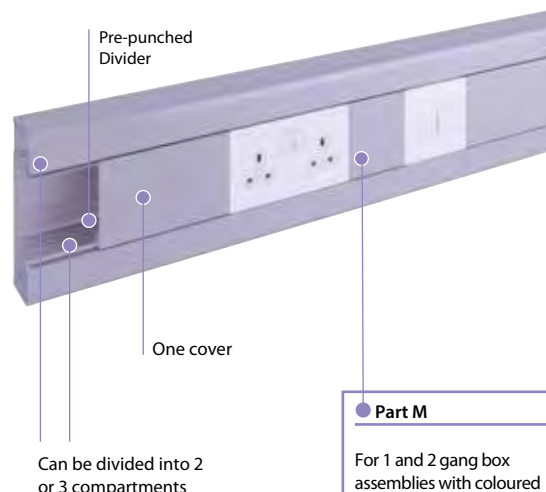
\*Supplied complete with earth terminal

Elegance 170 Aluminium is a sleek and rounded 170mm rectangular dado trunking system with a single cover, ideal for use in office or educational environments where extra mechanical strength and a higher cable capacity is required.



#### Product information

- 170 x 55mm
- "C" type section can be used as a single large compartment section or can be further sub-divided into 2 or 3 compartments
- Cat 6, 6a and 7 compliant
- Suitable for dado and skirting applications
- Pre-punched dividers for quick installation
- A range of fabricated fittings
- Part M compliant
- Compatible with Marshall-Tufflex flush power and data accessories and standard UK wiring power and accessories
- Standard silver-grey RAL 9006 powder coat finish. White RAL 9016 is also available to order subject to a lead time.
- Can be used in conjunction with Conduit and Mini trunking systems



#### Part M

For 1 and 2 gang box assemblies with coloured flush plates to comply with Part M please refer to page 121.



#### Standard Colours

WH

SG

WH: White  
SG: Silver grey

**Colour code suffix:** to indicate the finish you require, add the required colour code to the end of the product code.

**Options:** optional colours and finishes are available but these will be subject to minimum quantity orders, longer lead times and set up charges. For more information contact the Technical Team on 01424 856688.



#### Base unit and cover

code	pack
LP1050SG	1 x 2.9m

**Note:** In order to sub-divide Elegance 170, LP1005 dividing fillets should be used

p245

#### Technical Information



#### End cap (screws included)

code	pack
LP1030SG	1



#### Internal bend 90°

code	pack
LP1020SG	1



#### External bend 90° Slow

code	pack
LP1026SG	1



#### Flat angle

code	pack
LP1040SG	1



#### Flat tee

code	pack
LP1045SG	1



## Components



## RCD/MCB Housing

code	pack
EAHC1MWH	1

\*Up to 4 modules can be accommodated

**Note:** RCDs and MCBs are not supplied by Marshall-Tufflex



## Dividing fillet (pre-punched)

code	length	pack
LP1005	1.45m	1

**Note:** In order to sub-divide Elegance 170, the above LP1005 dividing fillets should be used



## Earth bonding kit

code	pack
LBT3	1

**Note:** Fastons supplied suit 1.5mm to 2.5mm cable (blue) and 4.0mm to 6.0mm (yellow).

## Bonding assemblies



## Bonding strap

code	description	pack
LBS2	cover to base	5



## End cap bonding strap

code	pack
LBS5	1

## Coupler Pin

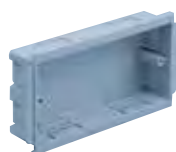
code	description	pack
LDP1	ø2.5 x 20mm	10

To aid alignment of base profiles

## Boxes and plates

1 gang accessory box  
30mm deep

code	description	pack
ESSB1SG	ABS	1
ESSB401WH	polycarbonate	1

2 gang accessory box  
30mm deep

code	description	pack
ESSB2SG	ABS	1
ESSB402WH	polycarbonate	1

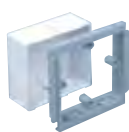
## Part M

1 and 2 gang box assemblies are available to comply with the requirements of Part M (DDA).

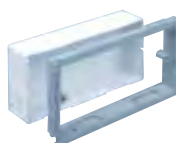


## Part M box assembly

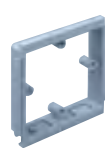
code	description	pack
ESPM1BU	1 gang - blue plate	1
ESPM1CH	1 gang - charcoal plate	1
ESPM1RD	1 gang - red plate	1
ESPM1GN	1 gang - green plate	1
ESPM1LG	1 gang - light grey plate	1
ESPM2BU	2 gang - blue plate	1
ESPM2CH	2 gang - charcoal plate	1
ESPM2RD	2 gang - red plate	1
ESPM2GN	2 gang - green plate	1
ESPM2LG	2 gang - light grey plate	1

1 gang adjustable  
depth box

code	depth	pack
EAB1SG	32 – 40mm	1

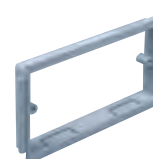
2 gang adjustable  
depth box

code	depth	pack
EAB2SG	32 – 40mm	1



## 1 gang accessory plate

code	pack
ESSP1SG	1



## 2 gang accessory plate

code	pack
ESSP2SG	1

## Screened boxes

## Screening

Conductive spray (CS) is unique to Marshall-Tufflex and is applied in the factory to provide screening from electromagnetic interference to data and communications cabling within trunking systems. The coating is applied to a range of data boxes, covers, clip-on components and fabricated fittings.

**WARNING:** A CS coating is not suitable for low voltage circuits.



## 1 gang screened accessory box

code	depth	description	pack
ESSB1SWH*	30mm	PVC-U	20

## 2 gang screened accessory box

code	depth	description	pack
ESSB2SWH*	30mm	PVC-U	10

\*Supplied complete with earth terminal

Sterling Profile Aluminium is a popular and stylish looking trunking system that offers a variety of trunking profiles with separate compartment covers.

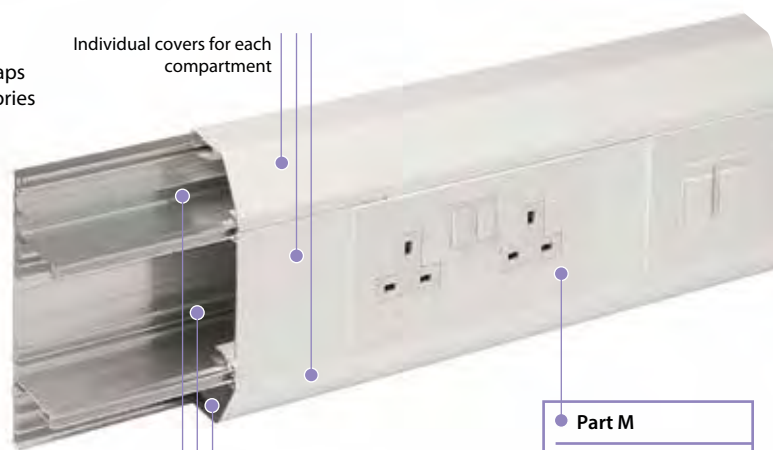


#### Product information

- 167 x 50mm
- 3 segregated compartments
- Can be sub-divided
- Suitable for dado and skirting applications
- A range of polycarbonate clip-on fittings with built-in overlaps
- Fully compatible with Sterling flush power and data accessories

#### Data information

- Standard bend radius of 25mm (Cat 6)
- Data fittings available for bend radius up to 50mm
- Adjustable data box 32-40mm
- Screened divider and data boxes



Compartment can be subdivided

#### Part M

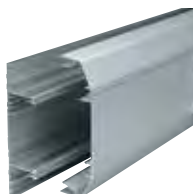
For 1 and 2 gang box assemblies with coloured flush plates to comply with Part M please refer to page 124.



Standard Colours	
WH	SG
WH: White SG: Silver grey	

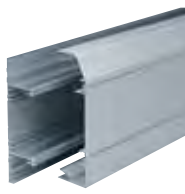
**Colour code suffix:** to indicate the finish you require, add the required colour code to the end of the product code.

**Colour options:** optional colours and finishes are available but these are subject to minimum quantity orders and longer lead times. For more information contact the Technical Team on 01424 856688.



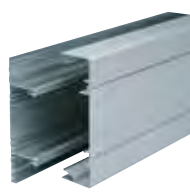
#### Profile 3001

size: 167 x 50mm



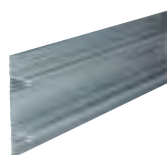
#### Profile 3002

size: 167 x 50mm



#### Profile 3003

size: 167 x 50mm



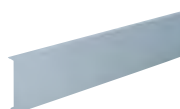
#### Base unit

code	pack
ETB300MF*	2 x 3m

\*MF=Mill finish

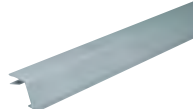
p246

Technical Information



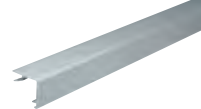
#### Main compartment cover

code	pack
LTL1SG	1 x 3m



#### Angled cover

code	pack
ETAC300SG	1 x 3m



#### Square cover

code	pack
ETSC300SG	1 x 3m



Profile 3001  
Coupler

code	pack
ECP401SG	1



Profile 3002  
Coupler

code	pack
ECP402SG	1



Profile 3003  
Coupler

code	pack
ECP403SG	1



Profile 3001  
End cap

code	pack
EECP401SG	1



Profile 3002  
End cap

code	pack
EECP402LHSG (Left hand)	1
EECP402RHSG (Right hand)	1



Profile 3003  
End cap

code	pack
EECP403SG	1



Profile 3001  
Internal bend

code	pack
EIBP401SG	1



Profile 3002  
Internal bend

code	pack
EIBP402SG	1



Profile 3003  
Internal bend

code	pack
EIBP403SG	1



Profile 3001  
External bend

code	pack
EXBP401SG	1



Profile 3002  
External bend

code	pack
EXBP402SG	1



Profile 3003  
External bend

code	pack
EXBP403SG	1



Dividing fillet (PVC-U)

code	pack
EDF1	outer 8 x 3m



Profile 3001  
Flat angle – up/down

code	pack
EFAP3001SG	1



Profile 3002  
Flat angle – upward

code	pack
EFAP3002USG	1



Profile 3002  
Flat angle – downward

code	pack
EFAP3002DSG	1



Profile 3003  
Flat angle – up/down

code	pack
EFAP3003SG	1



Profile 3001  
Flat tee – up/down

code	pack
EFTP3001SG	1



Profile 3003  
Flat tee – up/down

code	pack
EFTP3003SG	1

#### Sterling Profile 3002 flat tees

Where profiles have one angled cover and one square cover, as with Sterling Profile 3002, it is possible to create a tee by changing the top or bottom cover so that covers match the profile of the trunking. For example:

- Upward tee – select Profile 3001 tee remove the angled bottom cover and replace with square cover.
- Downward tee – select Profile 3003 tee remove the square top cover and replace with angled cover.

## Components

**\*RCD/MCB Housing**

code pack

**EAHC1MWH** 1

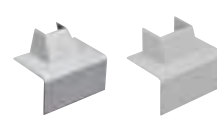
\*Up to 4 modules can be accommodated

**Note:** RCDs and MCBs are not supplied by Marshall-Tufflex**Main crossover bridge (PVC-U)**

code pack

**EMCB1** 5**Angled cable retainer (PVC-U)**code pack  
**EACR1** 10**Main cable retainer (PVC-U)**code pack  
**EMCR1** 10**Angled mini-trunking adaptor (Polycarbonate)**

code	Description	pack
<b>EATA402SG</b>	MMT2	5
<b>EATA404SG</b>	MMT4	1

**Square mini-trunking adaptor (Polycarbonate)**

code	Description	pack
<b>ESTA402SG</b>	MMT2	5
<b>ESTA404SG</b>	MMT4	1

## Bonding assemblies

**Bonding terminal assembly**

code	description	pack
<b>LBT1</b>	incoming 16mm <sup>2</sup>	5

**Bonding strap**

code	description	pack
<b>LBS1</b>	base to base 32Amp	5

**Bonding strap**

code	description	pack
<b>LBS2</b>	cover to base	5

## Boxes and plates

**1 gang accessory box 30mm deep**

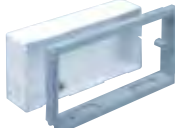
code	description	pack
<b>ESSB1SG</b>	ABS	1
<b>ESSB401WH</b>	polycarbonate	1

**2 gang accessory box 30mm deep**

code	description	pack
<b>ESSB2SG</b>	ABS	1
<b>ESSB402WH</b>	polycarbonate	1

**1 gang adjustable depth box**

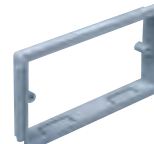
code	depth	pack
<b>EAB1SG</b>	32 – 40mm	1

**2 gang adjustable depth box**

code	depth	pack
<b>EAB2SG</b>	32 – 40mm	1

**1 gang accessory plate**

code	pack
<b>ESSP1SG</b>	1

**2 gang accessory plate**

code	pack
<b>ESSP2SG</b>	1


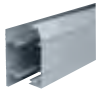

**Part M**

1 and 2 gang box assemblies with contrasting coloured flush plates are available to comply with the requirements of Part M (DDA).

**Part M box assembly**

code	description	pack
<b>ESPM1BU</b>	1 gang - blue plate	1
<b>ESPM1CH</b>	1 gang - charcoal plate	1
<b>ESPM1RD</b>	1 gang - red plate	1
<b>ESPM1GN</b>	1 gang - green plate	1
<b>ESPM1LG</b>	1 gang - light grey plate	1
<b>ESPM2BU</b>	2 gang - blue plate	1
<b>ESPM2CH</b>	2 gang - charcoal plate	1
<b>ESPM2RD</b>	2 gang - red plate	1
<b>ESPM2GN</b>	2 gang - green plate	1
<b>ESPM2LG</b>	2 gang - light grey plate	1

## Sterling Profile aluminium component chart

		3 compartment		
		Profile 3001 167 x 50mm	Profile 3002 167 x 50mm	Profile 3003 167 x 50mm
				
<b>Base unit</b>				
Pack	2 x 3m	ETB300MF	ETB300MF	ETB300MF
Milled aluminium				
<b>Main compartment cover</b>				
Pack	1 x 3m	LTL1SG	LTL1SG	LTL1SG
<b>Angled cover</b>				
Pack	1 x 3m	2 x ETAC300SG	1 x ETAC300SG	—
<b>Square cover</b>				
Pack	1 x 3m	—	1x ETSC300SG	2 x ETSC300SG
<b>Couplers</b>				
Pack	1	ECP401SG	ECP402SG	ECP403SG
<b>End caps</b>				
Pack	1	EECP401SG	EECP402LHSG EECP402RHSG	EECP403SG
Left or right handed				
<b>Internal bends</b>				
Pack	1	EIBP401SG	EIBP402SG	EIBP403SG
Internal base corner needs to be mitred				
<b>External bends</b>				
Pack	1	EXBP401SG	EXBP402SG	EXBP403SG
External base corner needs to be mitred				
<b>Flat angles</b>				
Pack	1	EFAP3001SG	EFAP3002USG EFAP3002DSG	EFAP3003SG
Upward or downward				
<b>† Flat tees</b>				
Pack	1	EFTP3001SG	†	EFTP3003SG
† See Flat Tee information below				

p246

Technical  
Information

## † Sterling Profile 3002 flat tees

Where profiles have one angled cover and one square cover, as with Sterling Profile 3002, it is possible to create a tee by changing the top or bottom cover so that covers match the profile of the trunking. For example:

- Upward tee – select Profile 3001 tee remove the angled bottom cover and replace with square cover.
- Downward tee – select Profile 3003 tee remove the square top cover and replace with angled cover.

## Screened boxes

## Screening

Conductive spray (CS) is unique to Marshall-Tufflex and is applied in the factory to provide protection from electromagnetic interference to data and communications cabling within trunking systems. The coating is applied to a range of data boxes, covers, clip-on components and fabricated fittings.

**WARNING:** A CS coating is not suitable for low voltage circuits.



## 1 gang screened accessory box

code	depth	description	pack
ESSB1SWH*	30mm	PVC-U	20

## 2 gang screened accessory box

code	depth	description	pack
ESSB2SWH*	30mm	PVC-U	10

\*Supplied complete with earth terminal

XL Aluminium Trunking 301 to 303 comprises a range of deep, 3-compartment systems that provide extra capacity and screening performance levels for data cabling.

#### Product information

- 220 x 65mm
- 3 deep segregated compartments
- Compartments can be sub-divided
- Suitable for dado and skirting applications (XL301 is recommended for dado application only)
- Includes a range of polycarbonate clip-on fittings with built-in overlaps
- Fully compatible with Sterling flush power and data accessories

#### Data information

- For bend radius information contact the Technical Team
- External bends feature internal segregators
- Adjustable data box 32-50mm
- Screened divider and data boxes

Standard Colours	
WH	SG
WH: White SG: Silver grey	

**Colour code suffix:** to indicate the finish you require, add the required colour code to the end of the product code.

**Colour options:** optional colours and finishes are available but these are subject to minimum quantity orders and longer lead times. For more information contact the Technical Team on 01424 856688.

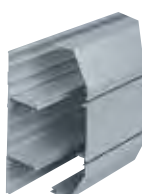


#### Part M

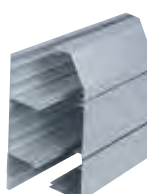
For 1 and 2 gang box assemblies with coloured flush plates to comply with Part M please refer to page 128.



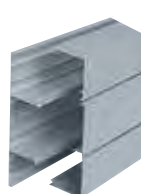
### XL profiles



**\*XL 301**  
size 220 x 65mm  
\*For dado installation only



**XL 302**  
size 220 x 65mm

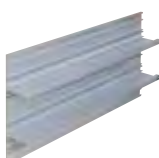


**XL 303**  
size 220 x 65mm

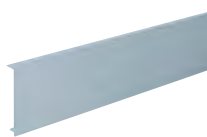
p251

Technical  
Information

### Basic components



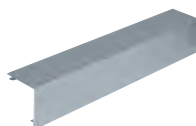
**Base unit**  
code pack  
ELTB300 2 x 3m



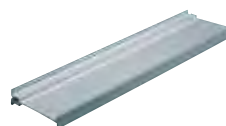
**Main compartment cover**  
code pack  
LTL1SG 1 x 3m



**Angled cover**  
code pack  
ELAC300SG 1 x 3m



**Square cover**  
code pack  
ELSC300SG 1 x 3m



**Dividing fillet**  
code pack  
ELDF200 8 x 3m



## Fittings (Polycarbonate)



**XL 301  
Coupler**

code	pack
EC401SG	1



**XL 302  
Coupler**

code	pack
EC402SG	1



**XL 303  
Coupler**

code	pack
EC403SG	1



**XL 301  
End cap**

code	pack
EEC401SG	1



**XL 302  
End cap**

code	pack
EEC402LHSG (Left hand)	1
EEC402RHSG (Right hand)	1



**XL 303  
End cap**

code	pack
EEC403SG	1



**XL 301  
Internal bend**

code	pack
EIB401SG	1



**XL 302  
Internal bend**

code	pack
EIB402SG	1



**XL 303  
Internal bend**

code	pack
EIB403SG	1



**XL 301  
External bend**

code	pack
EXB401SG	1



**XL 302  
External bend**

code	pack
EXB402SG	1



**XL 303  
External bend**

code	pack
EXB403SG	1



**XL 301  
Flat angle – up/down**

code	pack
EFA301SG	1



**XL 302  
Flat angle – upward**

code	pack
EFA302USG	1



**XL 302  
Flat angle – downward**

code	pack
EFA302DSG	1



**Flat angle – up/down  
XL 303**

code	pack
EFA303SG	1



**XL 301  
Flat tee – up/down**

code	pack
EFT301SG	1



**XL 303  
Flat tee – up/down**

code	pack
EFT303SG	1

#### XL Trunking 302 flat tees

Where profiles have one angled cover and one square cover, as with XL 302, it is possible to create a tee by changing the top or bottom cover so that covers match the profile of the trunking. For example:

- Upward tee – select XL 301 tee remove the angled bottom cover and replace with square cover.
- Downward tee – select XL 303 tee remove the square top cover and replace with angled cover.

## Fittings (Aluminium)

**\*RCD/MCB Housing**

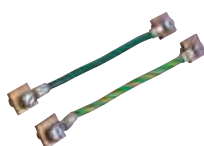
code	description	pack
EAHC1MWH		1

\*Up to 4 modules can be accommodated

**Note:** RCDs and MCBs are not supplied by Marshall-Tufflex

**Bonding terminal assembly**

code	description	pack
LBT1	incoming 16mm <sup>2</sup>	5

**Bonding strap**

code	description	pack
LBS1	base to base 32Amp	5

**Bonding strap**

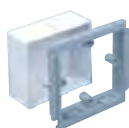
code	description	pack
LBS2	cover to base	5

**1 gang accessory box 30mm deep**

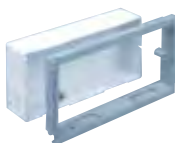
code	description	pack
ESSB1SG	ABS	1
ESSB401WH	polycarbonate	1

**2 gang accessory box 30mm deep**

code	description	pack
ESSB2SG	ABS	1
ESSB402WH	polycarbonate	1

**1 gang adjustable depth box**

code	depth	pack
EAB1SG	32 – 47mm	1

**2 gang adjustable depth box**

code	depth	pack
EAB2SG	32 – 47mm	1

**1 gang accessory plate**

code	description	pack
ESSP1SG		1

**2 gang accessory plate**

code	description	pack
ESSP2SG		1

**Part M**

1 and 2 gang box assemblies with contrasting coloured flush plates are available to comply with the requirements of Part M (DDA).

**Part M box assembly**

code	description	pack
ESPM1BU	1 gang - blue plate	1
ESPM1CH	1 gang - charcoal plate	1
ESPM1RD	1 gang - red plate	1
ESPM1GN	1 gang - green plate	1
ESPM1LG	1 gang - light grey plate	1
ESPM2BU	2 gang - blue plate	1
ESPM2CH	2 gang - charcoal plate	1
ESPM2RD	2 gang - red plate	1
ESPM2GN	2 gang - green plate	1
ESPM2LG	2 gang - light grey plate	1

**Screening**

Conductive spray (CS) is unique to Marshall-Tufflex and is applied in the factory to provide screening from electromagnetic interference to data and communications cabling within trunking systems. The coating is applied to a range of data boxes, covers, clip-on components and fabricated fittings.

**WARNING:** A CS coating is not suitable for low voltage circuits.

**1 gang screened accessory box**

code	depth	description	pack
ESSB1SWH*	30mm	PVC-U	20

**2 gang screened accessory box**

code	depth	description	pack
ESSB2SWH*	30mm	PVC-U	10

\*Supplied complete with earth terminal

## XL Aluminium 301 to 303 component chart

**Base unit**

Pack 2 x 3m

Features earth bonding rail and screw ports to aid the fastening of pipe clips and gas valves etc

**Main compartment cover**

Pack 1 x 3m

**Angled cover**

Pack 1 x 3m

**Square cover**

Pack 1 x 3m

**Couplers**

Pack 1

**End caps**

Pack 1

left or right hand

**Internal bends**

Pack 1

**External bends**

Pack 1

**Flat angles**

Pack 1

upward or downward

**† Flat tees**

Pack 1

† See Flat Tee information below

**3 Compartment****XL 301**

220 x 65mm

**XL 302**

220 x 65mm

**XL 303**

220 x 65mm



ELTB300

ELTB300

ELTB300

LTL1SG

LTL1SG

LTL1SG

2 x ELAC300SG

1 x ELAC300SG

—

—

1 x ELSC300SG

2 x ELSC300SG

EC401SG

EC402SG

EC403SG

EEC401SG

EEC402LHSG  
EEC402RHSG

EEC403SG

EIB401SG

EIB402SG

EIB403SG

EXB401SG

EXB402SG

EXB403SG

EFA301SG

EFA302USG  
EFA302DSG

EFA303SG

EFT 301SG

†

EFT303SG

**† XL Trunking 302 flat tees**

Where profiles have one angled cover and one square cover, as with XL 302 trunking, it is possible to create a tee by changing the top or bottom cover so that covers match the profile of the trunking. For example:

- Upward tee – select XL 301 tee remove the angled bottom cover and replace with square cover.
- Downward tee – select XL 303 tee remove the square top cover and replace with angled cover.

p251

Technical  
Information

XL Aluminium Trunking 311 to 313 comprises a range of deep, multi-compartment systems that provide extra capacity and screening performance levels for data cabling. XL 311, 312 and 313 offer the facility to extend height for higher density cabling.

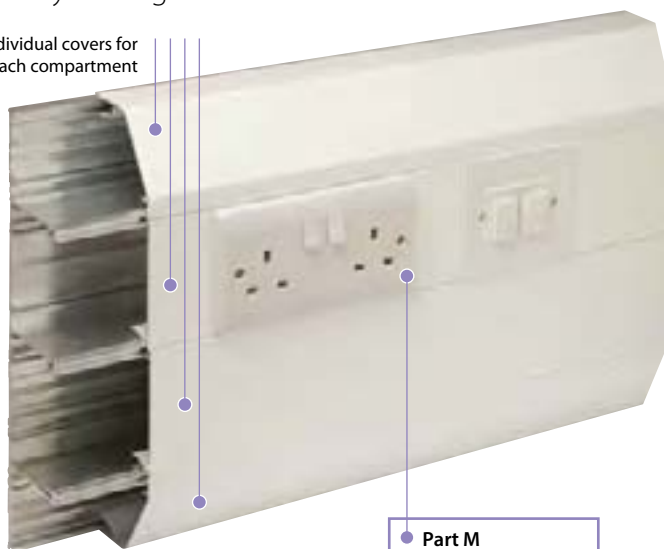
**Product information**

- 308 x 65mm
- 4 or more deep segregated compartments
- Compartments can be sub-divided
- Suitable for dado and skirting applications (XL 311 is recommended for dado application only)
- Includes a range of polycarbonate clip-on fittings with built-in overlaps
- Fully compatible with Sterling flush power and data accessories

**Data information**

- For bend radius information contact the Technical Team
- External bends feature internal segregators
- Adjustable data box 32-50mm
- Screened divider and data boxes

Individual covers for each compartment



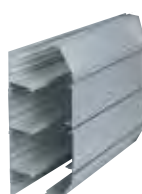
Standard Colours	
WH	SG
WH: White SG: Silver grey	

**Colour code suffix:** to indicate the finish you require, add the required colour code to the end of the product code.

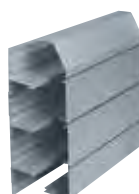
**Colour options:** optional colours and finishes are available but these are subject to minimum quantity orders and longer lead times. For more information contact the Technical Team on 01424 856688.

**Part M**

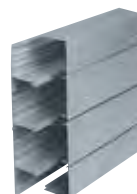
For 1 and 2 gang box assemblies with coloured flush plates to comply with Part M please refer to page 132.

ALUMINIUM TRUNKING SYSTEMS  
XL profiles

**\*XL 311**  
size 308 x 65mm  
\*For dado installation only

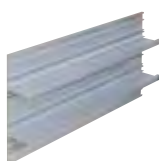


**XL 312**  
size 308 x 65mm



**XL 313**  
size 308 x 65mm

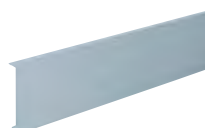
## Basic components



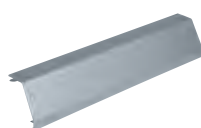
**Base unit**  
code pack  
**ELTB300** 2 x 3m



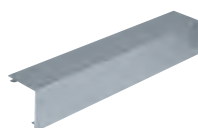
**Extendable base\***  
code pack  
**ELEB300** 1 x 3m  
\* To increase number of compartments



**Main compartment cover**  
code pack  
**LTL1SG** 1



**Angled cover**  
code pack  
**ELAC300SG** 1 x 3m



**Square cover**  
code pack  
**ELSC300SG** 1 x 3m



**Dividing fillet**  
code pack  
**ELDF200** 8 x 3m

p251

Technical Information

## Fittings (Polycarbonate)



**XL 311  
Coupler**

code	pack
EC401SG plus ELLCC400SG	1



**XL 312  
Coupler**

code	pack
EC402SG plus ELLCC400SG	1



**XL 313  
Coupler**

code	pack
EC403SG plus ELLCC400SG	1



**XL 311  
End cap**

code	pack
EEC401SG plus ELLEC400SG	1
Universal for RH and LH	



**XL 312  
End cap**

code	pack
EEC402LHSG plus ELLEC400SG	1
EEC402RHSG plus ELLEC400SG	1



**XL 313  
End cap**

code	pack
EEC403SG plus ELLEC400SG	1
Universal for RH and LH	

#### End cap retaining screws

When installing end caps, additional retention can be achieved by using end cap retaining screws G1310 (pack 40).



**XL 311  
Internal bend**

code	pack
EIB401SG plus ELLIB400SG	1



**XL 312  
Internal bend**

code	pack
EIB402SG plus ELLIB400SG	1



**XL 313  
Internal bend**

code	pack
EIB403SG plus ELLIB400SG	1



**XL 311  
External bend**

code	pack
EXB401SG plus ESLEB400SG	1



**XL 312  
External bend**

code	pack
EXB402SG plus ESLEB400SG	1



**XL 313  
External bend**

code	pack
EXB403SG plus ESLEB400SG	1

## Fittings (Aluminium)



**XL 311  
Flat angle – up/down**

code	pack
EFA311SG	1



**XL 312  
Flat angle – upward**

code	pack
EFA312USG	1



**XL 312  
Flat angle – downward**

code	pack
EFA312DSG	1



**XL 313  
Flat angle – up/down**

code	pack
EFA313SG	1



**XL 311  
Flat tee – up/down**

code	pack
EFT311SG	1



**XL 313  
Flat tee – up/down**

code	pack
EFT313SG	1

#### XL Trunking 312 flat tees

Where profiles have one angled cover and one square cover, as with XL 312, it is possible to create a tee by changing the top or bottom cover so that covers match the profile of the trunking. For example:

- Upward tee – select XL 311 tee remove the angled bottom cover and replace with square cover.
- Downward tee – select XL 313 tee remove the square top cover and replace with angled cover.

**\*RCD/MCB Housing**

code	description	pack
EAHC1MWH		1

\*Up to 4 modules can

be accommodated

**Note:** RCDs and MCBs are not supplied by Marshall-Tufflex

**Bonding terminal assembly**

code	description	pack
LBT1	incoming 16mm <sup>2</sup>	5

**Bonding strap**

code	description	pack
LBS1	base to base 32 amp	5

**Bonding strap**

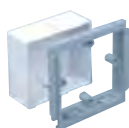
code	description	pack
LBS2	cover to base	5

**1 gang accessory box  
30mm deep**

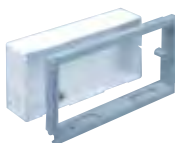
code	description	pack
ESSB1SG	ABS	1
ESSB401WH	polycarbonate	1

**2 gang accessory box  
30mm deep**

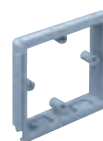
code	description	pack
ESSB2SG	ABS	1
ESSB402WH	polycarbonate	1

**1 gang adjustable  
depth box**

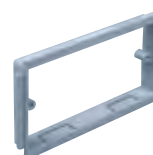
code	depth	pack
EAB1SG	32 – 47mm	1

**2 gang adjustable  
depth box**

code	depth	pack
EAB2SG	32 – 47mm	1

**1 gang accessory plate**

code	description	pack
ESSP1SG		1

**2 gang accessory plate**

code	description	pack
ESSP2SG		1

**Part M**

1 and 2 gang box assemblies with contrasting coloured flush plates are available to comply with the requirements of Part M (DDA).

**Part M box assembly**

code	description	pack
ESPM1BU	1 gang - blue plate	1
ESPM1CH	1 gang - charcoal plate	1
ESPM1RD	1 gang - red plate	1
ESPM1GN	1 gang - green plate	1
ESPM1LG	1 gang - light grey plate	1
ESPM2BU	2 gang - blue plate	1
ESPM2CH	2 gang - charcoal plate	1
ESPM2RD	2 gang - red plate	1
ESPM2GN	2 gang - green plate	1
ESPM2LG	2 gang - light grey plate	1

**Screening**

Conductive spray (CS) is unique to Marshall-Tufflex and is applied in the factory to provide screening from electromagnetic interference to data and communications cabling within trunking systems. The coating is applied to a range of data boxes, covers, clip-on components and fabricated fittings.

**WARNING:** A CS coating is not suitable for low voltage circuits.

**1 gang screened accessory box**

code	depth	description	pack
ESSB1SWH*	30mm	PVC-U	20

**2 gang screened accessory box**

code	depth	description	pack
ESSB2SWH*	30mm	PVC-U	10

\*Supplied complete with earth terminal



## XL Aluminium 311 to 313 component chart

**Base unit**

Pack 2 x 3m

Features earth bonding rail and screw ports to aid the fastening of pipe clips and gas valves etc

**Extendable base**

Pack 1 x 3m

Additional 88mm compartment

**Main compartment cover**

Pack 1 x 3m

**Angled cover**

Pack 1 x 3m

**Square cover**

Pack 1 x 3m

**Couplers**

Pack 1

**End caps**

Pack 1

left or right hand

**Internal bends**

Pack 1

**External bends**

Pack 1

**Flat angles**

Pack 1

upward or downward

**† Flat tees**

Pack 1

† See Flat Tee information below

**4 Compartment****XL 311**

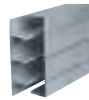
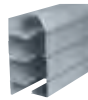
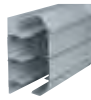
308 x 65mm

**XL 312**

308 x 65mm

**XL 313**

308 x 65mm



ELTB300

ELTB300

ELTB300

ELEB300

ELEB300

ELEB300

2 x LTL1SG

2 x LTL1SG

2 x LTL1SG

2 x ELAC300SG

1 x ELAC300SG

—

—

1 x ELSC300SG

2 x ELSC300SG

EC401SG &  
ELLCC400SGEC402SG &  
ELLCC400SGEC403SG &  
ELLCC400SGEEC401SG &  
ELLECC400SGEEC402LHSG &  
ELLECC400SG  
EEC402RHSG &  
ELLECC400SGEEC403SG &  
ELLECC400SGEIB401SG &  
ELLIB400SGEIB402SG &  
ELLIB400SGEIB403SG &  
ELLIB400SGEXB401SG &  
ESLEB400SGEXB402SG &  
ESLEB400SGEXB403SG &  
ESLEB400SG

EFA311SG

EFA312USG &  
EFA312DSG

EFA313SG

EFT311SG

†

EFT313SG

**† XL Trunking 312 flat tees**

Where profiles have one angled cover and one square cover, as with XL Trunking 312, it is possible to create a tee by changing the top or bottom cover so that covers match the profile of the trunking. For example:

- Upward tee – select XL 311 tee remove the angled bottom cover and replace with square cover.
- Downward tee – select XL 313 tee remove the square top cover and replace with angled cover.

p251

Technical  
Information

Twin Plus Aluminium is an extra deep cable management solution incorporating two large segregated high capacity compartments. Twin Plus is specifically designed for carrying large quantities of Cat 6 data cabling.

#### Product information

- 210 x 57mm
- 2 large permanent segregated compartments
- Each compartment can be sub divided
- Suitable for dado and skirting applications
- Bends angles and tees with a large bend radius
- Includes a range of clip-on fittings with built-in overlaps
- Fully compatible with Sterling flush power and data accessories
- All fittings are ABS

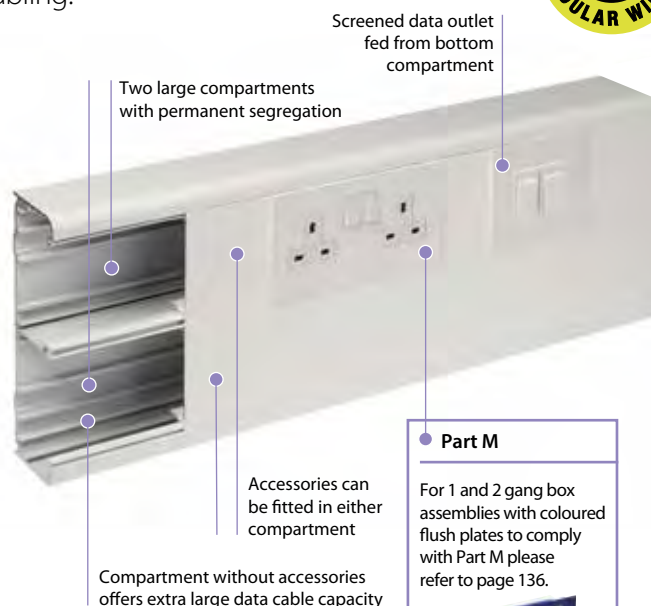
#### Data information

- 50mm bend radius fittings
- Adjustable data box 32-47mm
- Screened divider and data boxes

Standard Colours	
WH	SG
WH: White SG: Silver grey	

**Colour code suffix:** to indicate the finish you require, add the required colour code to the end of the product code.

**Colour options:** optional colours and finishes are available but these are subject to minimum quantity orders and longer lead times. For more information contact the Technical Team on 01424 856688.



#### Part M

For 1 and 2 gang box assemblies with coloured flush plates to comply with Part M please refer to page 136.



p249

Technical Information

### Basic components



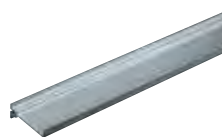
Base unit

code	pack
EMTA60SG	1 x 3m



Main compartment cover (aluminium)

code	pack
LTL1SG	1 x 3m



Dividing fillet (PVC-U)

code	pack
LDF1	8 x 3m

### Fittings (ABS)



Coupler

code	pack
EC60SG	1



End cap

code	pack
EEC60SG	1

#### End cap retaining screws

When installing end caps, additional retention can be achieved by using end cap retaining screws G1310 (pack 40).



Internal bend cover

code	pack
EIBC60SG	1



Standard external bend cover

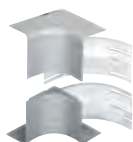
code	pack
ESXBC60SG	1



Flat angle cover

code	pack
EFAC60SG	1

## Fittings (ABS)



---DATA---

**Internal bend assembly**

code	pack
EIB60SG	1



---DATA---

**External bend assembly  
Standard**

code	pack
ESXB60SG	1

Capacity reduced by 50%



---DATA---

**External bend assembly  
Large**

code	pack
EXB60SG	1



---DATA---

**Flat angle assembly**

code	pack
EFA60SG	1

Covers and cable inserts in ABS



---DATA---

**Flat tee assembly**

code	pack
EFTA60SG	1

Flat Tees include covers, cable inserts in ABS with base in aluminium

## Components

**\*RCD/MCB Housing**

code	pack
EAHC1MWH	1

\*Up to 4 modules can be accommodated

**Note:** RCDs and MCBs are not supplied by Marshall-Tufflex

## Bonding assemblies

**Bonding terminal assembly**

code	description	pack
LBT1	incoming 16mm <sup>2</sup>	5

**Bonding strap**

code	description	pack
LBS1	base to base 32 amp	5

**Bonding strap**

code	description	pack
LBS2	cover to base	5

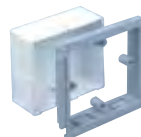
## Boxes and plates

1 gang accessory box  
30mm deep

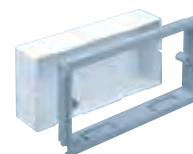
code	description	pack
ESSB1SG	ABS	1
ESSB401WH	polycarbonate	1

2 gang accessory box  
30mm deep

code	description	pack
ESSB2SG	ABS	1
ESSB402WH	polycarbonate	1

1 gang adjustable  
depth box

code	depth	pack
EAB1SG	32 – 47mm	1

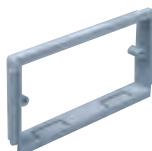
2 gang adjustable  
depth box

code	depth	pack
EAB2SG	32 – 47mm	1



1 gang accessory plate

code	pack
ESSP1SG	1



2 gang accessory plate

code	pack
ESSP2SG	1

## Part M

1 and 2 gang box assemblies with contrasting coloured flush plates are available to comply with the requirements of Part M (DDA).



## Part M box assembly

code	description	pack
ESPM1BU	1 gang - blue plate	1
ESPM1CH	1 gang - charcoal plate	1
ESPM1RD	1 gang - red plate	1
ESPM1GN	1 gang - green plate	1
ESPM1LG	1 gang - light grey plate	1
ESPM2BU	2 gang - blue plate	1
ESPM2CH	2 gang - charcoal plate	1
ESPM2RD	2 gang - red plate	1
ESPM2GN	2 gang - green plate	1
ESPM2LG	2 gang - light grey plate	1

## Screening

Conductive spray (CS) is unique to Marshall-Tufflex and is applied in the factory to provide screening from electromagnetic interference to data and communications cabling within trunking systems. The coating is applied to a range of data boxes, covers, clip-on components and fabricated fittings.



**WARNING:** A CS coating is not suitable for low voltage circuits.

## 1 gang screened accessory box

code	depth	description	pack
ESSB1SWH*	30mm	PVC-U	20

## 2 gang screened accessory box

code	depth	description	pack
ESSB2SWH*	30mm	PVC-U	10

\*Supplied complete with earth terminal

## Screened boxes



Bench trunking aluminium is a robust angled trunking that can be mounted directly on to desks, work benches or fitted under shelving.

#### Product information

- 105 x 105mm
- Suitable for desk, bench or worktop applications
- Can be subdivided
- Fully compatible with Sterling flush power and data accessories

#### Data information

- Adjustable data box 32-40mm
- Screened divider and data boxes

Standard Colours	
WH	SG
WH: White SG: Silver grey	

**Colour code suffix:** to indicate the finish you require, add the required colour code to the end of the product code.  
**Colour options:** optional colours and finishes are available but these are subject to minimum quantity orders and longer lead times.  
 For more information contact the Technical Team on 01424 856688.



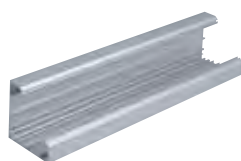
Can be sub divided

#### Part M

For 1 and 2 gang box assemblies with coloured flush plates to comply with Part M please refer to page 138.



### Basic components



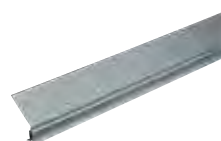
#### Trunking base

code	size	pack
MBTAB105SG	105x105mm	1 x 3m



#### Cover

code	pack
MBTAL105SG	1 x 3m



#### Dividing fillet (PVC-U)

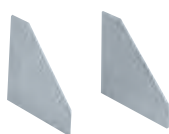
code	pack
BDF105WH	4 x 3m

p244

Technical Information

ALUMINIUM TRUNKING SYSTEMS

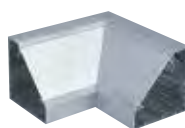
### Fittings



#### End caps (steel)

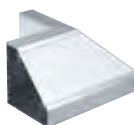
code	pack
BECA105SG	1

with fixing screws



#### Internal angle (aluminium)

code	pack
BIAA105SG	1



#### External angle (aluminium)

code	pack
BEAA105SG	1

### Bench units



#### 1 gang bench unit

code	description	pack
MBUA1SG	no socket	1
MBSA1SG	ESS1SG socket	1



#### 2 gang bench unit

code	description	pack
MBUA2SG	no socket	1
MBSA2SG	ESS2SG socket	1



#### 1 & 2 gang bench unit

code	description	pack
MBUA3SG	no sockets	1

## Components

**\*RCD/MCB Housing**

code	pack
EAHC1MWH	1

\*Up to 4 modules can

be accommodated

**Note:** RCDs are not supplied  
by Marshall-Tufflex

## Bonding assemblies

**Bonding terminal assembly**

code	description	pack
LBT1	incoming 16mm <sup>2</sup>	5

**Bonding strap**

code	description	pack
LBS1	base to base 32 amp	5

**Bonding strap**

code	description	pack
LBS2	cover to base	5

**End cap bonding strap**

code	pack
LBS3	1

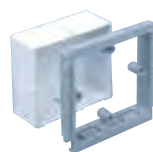
## Boxes and plates

**1 gang accessory box  
30mm deep**

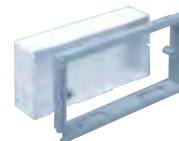
code	description	pack
ESSB1SG	ABS	1
ESSB401WH	polycarbonate	1

**2 gang accessory box  
30mm deep**

code	description	pack
ESSB2SG	ABS	1
ESSB402WH	polycarbonate	1

**1 gang adjustable  
depth box**

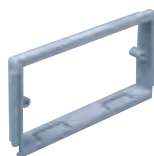
code	depth	pack
EAB1SG	32 – 40mm	1

**2 gang adjustable  
depth box**

code	depth	pack
EAB2SG	32 – 40mm	1

**1 gang accessory plate**

code	pack
ESSP1SG	1

**2 gang accessory plate**

code	pack
ESSP2SG	1

**Part M**

1 and 2 gang box assemblies with contrasting coloured flush plates are available to comply with the requirements of Part M (DDA).

**Part M box assembly**

code	description	pack
ESPM1BU	1 gang - blue plate	1
ESPM1CH	1 gang - charcoal plate	1
ESPM1RD	1 gang - red plate	1
ESPM1GN	1 gang - green plate	1
ESPM1LG	1 gang - light grey plate	1
ESPM2BU	2 gang - blue plate	1
ESPM2CH	2 gang - charcoal plate	1
ESPM2RD	2 gang - red plate	1
ESPM2GN	2 gang - green plate	1
ESPM2LG	2 gang - light grey plate	1

## Screened boxes

**Screening**

Conductive spray (CS) is unique to Marshall-Tufflex and is applied in the factory to provide screening from electromagnetic interference to data and communications cabling within trunking systems. The coating is applied to a range of data boxes, covers, clip-on components and fabricated fittings.

**WARNING:** A CS coating is not suitable for low voltage circuits.

**1 gang screened accessory box**

code	depth	description	pack
ESSB1SWH*	30mm	PVC-U	20

**2 gang screened accessory box**

code	depth	description	pack
ESSB2SWH*	30mm	PVC-U	10

\*Supplied complete with earth terminal