

MEC00451

19" Shelf Fixed

- Integrated fixing holes front and rear for handle or hinged cable routing
- With perforation to optimize air supply

Material/finish

Sheet steel 1.0 mm, zinc-passivated, powder-coated texture

Color

Final digit of order number .1:
RAL 7035 light gray
Final digit of order number .8:
RAL 7021 dark gray

Load rating

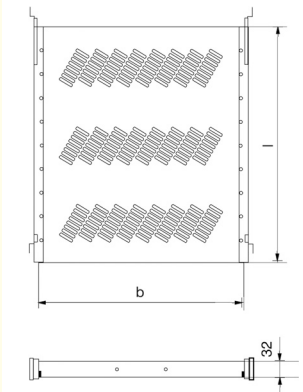
500 N static per item

Supply schedule

2 mounting rails, incl. mounting bracket
1 shelf board
1 extension board (from L = 600)
Mounting material

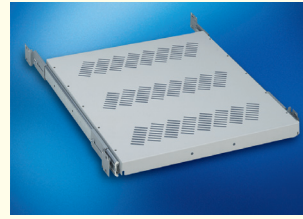
How supplied

Flat-packed kit



MEC20018

B _{Rack}	H _{Rack}	D _{Rack}	d	w x l	For rack type	Order no.	UP
600	365	430 x 300		Miracel/Smaract LAN	01.102.001.1	1 unit	
600	440	430 x 300		Miracel/Smaract 19"	01.102.002.1	1 unit	
800	565	430 x 500		Miracel/Smaract LAN	01.102.003.1	1 unit	
800	565	430 x 500		Miracel/Smaract LAN	01.102.003.8	1 unit	
800	640	430 x 600		Miracel/Smaract 19"	01.102.004.1	1 unit	
800	640	430 x 600		Miracel/Smaract 19"	01.102.004.8	1 unit	
900	665	430 x 600		Miracel/Smaract LAN	01.102.004.1	1 unit	
900	665	430 x 600		Miracel/Smaract LAN	01.102.004.8	1 unit	
900	740	430 x 600		Miracel/Smaract 19" Server	01.102.005.1	1 unit	
900	740	430 x 600		Miracel/Smaract 19" Server	01.102.005.8	1 unit	
1000	740	430 x 600		Miracel 19" Server	01.102.005.1	1 unit	
1000	740	430 x 600		Miracel 19" Server	01.102.005.8	1 unit	
600	600	530 515 x 500		Miracel LW 535	01.102.200.1	1 unit	
700	600	530 615 x 500		Miracel LW 635	01.102.201.1	1 unit	
800	600	530 715 x 500		Miracel LW 735	01.102.202.1	1 unit	
600	800	730 515 x 700		Miracel LW 535	01.102.208.1	1 unit	
700	800	730 615 x 700		Miracel LW 635	01.102.209.1	1 unit	
800	800	730 715 x 700		Miracel LW 735	01.102.210.1	1 unit	
600	900	830 515 x 800		Miracel LW 535	01.102.212.1	1 unit	
800	900	830 715 x 800		Miracel LW 735	01.102.214.1	1 unit	
600	600	535 515 x 500		Smaract LW 535	01.102.252.1	1 unit	
600	800	735 515 x 700		Smaract LW 535	01.102.254.1	1 unit	
600	900	835 515 x 800		Smaract LW 535	01.102.255.1	1 unit	
600	435	430 x 300		DoubleProRack with door	01.102.002.1	1 unit	
800	635	430 x 600		DoubleProRack with door	01.102.004.1	1 unit	
800	635	430 x 600		DoubleProRack with door	01.102.004.8	1 unit	
500	460	430 x 300		DoubleProRack no door	01.102.002.1	1 unit	
600	560	430 x 500		DoubleProRack no door	01.102.003.1	1 unit	
600	560	430 x 500		DoubleProRack no door	01.102.003.8	1 unit	
700	660	430 x 600		DoubleProRack no door	01.102.004.1	1 unit	
700	660	430 x 600		DoubleProRack no door	01.102.004.8	1 unit	
500	285	430 x 200		ConAct	01.102.000.1	1 unit	
600	385	430 x 300		ConAct	01.102.001.1	1 unit	



MEC00452

19" Shelf Part pull-out

- Integrated fixing holes front and rear for handle or hinged cable routing
- With perforation to optimize air supply
- Locking in pulled-out position (friction lock); easy conversion from form lock to friction lock with stop spring
- Quick separator for removing and disconnecting the shelf without tools

Material/finish

Sheet steel 1.0 mm, zinc-passivated, powder-coated texture

Color

Final digit of order number .1:
RAL 7035 light gray
Final digit of order number .8:
RAL 7021 dark gray

Load rating

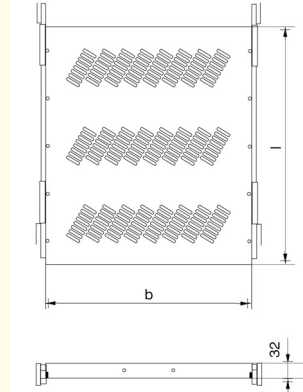
500 N static per item

Supply schedule

1 pair of telescopic slides
1 shelf board
1 extension board (from L = 600)
Mounting material

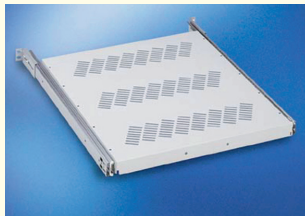
How supplied

Flat-packed kit



MEC20019

B _{Rack}	H _{Rack}	D _{Rack}	d	w x l	For rack type	Order no.	UP
600	365	430 x 300		Miracel/Smaract LAN	01.102.010.1	1 unit	
600	440	430 x 300		Miracel/Smaract 19"	01.102.010.1	1 unit	
800	565	430 x 500		Miracel/Smaract LAN	01.102.011.1	1 unit	
800	565	430 x 500		Miracel/Smaract LAN	01.102.011.8	1 unit	
800	640	430 x 500		Miracel/Smaract 19"	01.102.011.1	1 unit	
800	640	430 x 500		Miracel/Smaract 19"	01.102.011.8	1 unit	
900	665	430 x 500		Miracel/Smaract LAN	01.102.011.1	1 unit	
900	665	430 x 500		Miracel/Smaract LAN	01.102.011.8	1 unit	
900	740	430 x 600		Miracel/Smaract 19" Server	01.102.012.1	1 unit	
900	740	430 x 600		Miracel/Smaract 19" Server	01.102.012.8	1 unit	
1000	740	430 x 600		Miracel 19" Server	01.102.012.1	1 unit	
1000	740	430 x 600		Miracel 19" Server	01.102.012.8	1 unit	
600	600	530 515 x 500		Miracel LW 535	01.102.170.1	1 unit	
700	600	530 615 x 500		Miracel LW 635	01.102.171.1	1 unit	
800	600	530 715 x 500		Miracel LW 735	01.102.172.1	1 unit	
600	800/	730 515 x 600		Miracel LW 535	01.102.178.1	1 unit	
900							
700	800/	730 615 x 600		Miracel LW 635	01.102.179.1	1 unit	
900							
800	800/	730 715 x 600		Miracel LW 735	01.102.180.1	1 unit	
900							
600	435	430 x 300		DoubleProRack with door	01.102.010.1	1 unit	
800	635	430 x 600		DoubleProRack with door	01.102.011.1	1 unit	
800	635	430 x 600		DoubleProRack with door	01.102.011.8	1 unit	
500	460	430 x 300		DoubleProRack no door	01.102.010.1	1 unit	
600	560	430 x 500		DoubleProRack no door	01.102.011.1	1 unit	
600	560	430 x 500		DoubleProRack no door	01.102.011.8	1 unit	
700	660	430 x 600		DoubleProRack no door	01.102.011.1	1 unit	
700	660	430 x 600		DoubleProRack no door	01.102.011.8	1 unit	
600	385	430 x 300		ConAct	01.102.010.1	1 unit	



MEC00462

19" Shelf Full pull-out

- Integrated fixing holes front and rear for handle or hinged cable routing
- With perforation to optimize air supply
- Locking in pulled-out position (friction lock); easy conversion with stop spring
- Quick separator for removing and disconnecting the shelf without tools

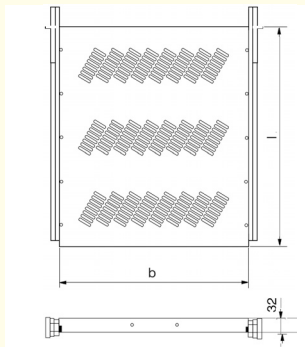
Material/finish
Sheet steel 1.0 mm, zinc-passivated, powder-coated texture

Color
RAL 7035 light gray

Load rating
500 N static per item

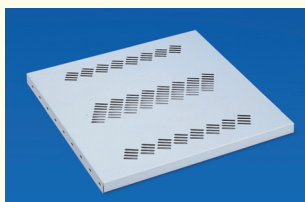
Supply schedule
1 pair of telescopic slides
1 shelf board
1 extension board (from L = 600)
Mounting material

How supplied
Flat-packed kit



MEC20xxx

B _{Rack}	H _{Rack}	D _{Rack}	U	d	w x l	For rack type	Order no.	UP
600	365	430 x 300			430 x 300	Miracel/Smaract LAN	01.102.160.1	1 unit
600	440	430 x 300			430 x 300	Miracel/Smaract 19"	01.102.160.1	1 unit
800	565	430 x 500			430 x 500	Miracel/Smaract LAN	01.102.161.1	1 unit
800	640	430 x 500			430 x 500	Miracel/Smaract 19"	01.102.161.1	1 unit
900	665	430 x 500			430 x 500	Miracel/Smaract LAN	01.102.161.1	1 unit
900	740	430 x 600			430 x 600	Miracel/Smaract 19" Server	01.102.162.1	1 unit
1000	740	430 x 600			430 x 600	Miracel 19" Server	01.102.162.1	1 unit



MEC00120

19" Heavy-Duty Shelf, Fixed

- Surface area with perforation
- Application as server or battery bottom cover

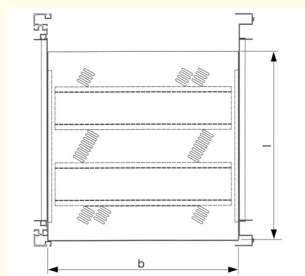
Material/finish
Sheet steel 1.5 mm, zinc-passivated, powder-coated texture

Color
Final digit of order number .1:
RAL 7035 light gray
Final digit of order number .8:
RAL 7021 dark gray

Load rating
1000 N static for CW installation
1500 N static for 19" installation

Supply schedule
1 shelf, fixed, threaded connection
2 mounting braces
Mounting material

How supplied
Flat-packed kit



MEC20117

B _{Rack}	H _{Rack}	D _{Rack}	U	d	w x l	For rack type	Order no.	UP
		800			565 467 x 460	Miracel/Smaract LAN	01.131.473.1	1 unit
		800			565 467 x 460	Miracel/Smaract LAN	01.131.473.8	1 unit
		800			640 467 x 460	Miracel/Smaract 19"	01.131.475.1	1 unit
		900			665 467 x 560	Miracel/Smaract LAN	01.131.476.1	1 unit
		900			740 467 x 560	Miracel/Smaract 19" Server	01.131.474.1	1 unit
		900			740 467 x 560	Miracel/Smaract 19" Server	01.131.474.8	1 unit
		1000			740 467 x 560	Miracel 19" Server	01.131.474.1	1 unit
		1000			740 467 x 560	Miracel 19" Server	01.131.474.8	1 unit
600	800	730			534 x 536	Miracel LW 535	01.131.477.1	1 unit
800	800	730			734 x 536	Miracel LW 735	01.131.479.1	1 unit
600	900	830			534 x 536	Miracel LW 535	01.131.481.1	1 unit
800	900	830			734 x 536	Miracel LW 735	01.131.483.1	1 unit



MEC20022

19" Heavy-Duty Shelf Full pull-out

- With perforation to optimize air supply
- Locking in pushed-in and fully pulled-out position
- Easy mounting with patented quick mounting system
- Application as server or battery bottom cover

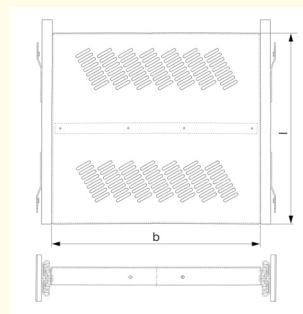
Material/finish
Sheet steel, 1.5 mm, powder-coated texture

Color
Final digit of order number .1:
RAL 7035 light gray
Final digit of order number .8:
RAL 7021 dark gray

Load rating
1200 N static

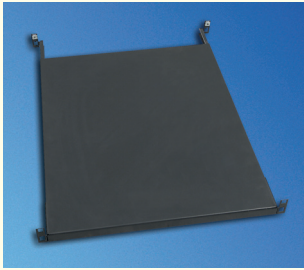
Supply schedule
1 pair of telescopic slides
1 shelf board
Mounting material

How supplied
Flat-packed kit



MEC20113

B _{Rack}	H _{Rack}	D _{Rack}	U	d	w x l	For rack type	Order no.	UP
		800			565 412 x 560	Miracel/Smaract LAN	01.102.031.1	1 unit
		800			565 412 x 560	Miracel/Smaract LAN	01.102.031.8	1 unit
		800			640 412 x 560	Miracel/Smaract 19"	01.102.031.1	1 unit
		800			640 412 x 560	Miracel/Smaract 19"	01.102.031.8	1 unit
		900			665 412 x 660	Miracel/Smaract LAN	01.102.032.1	1 unit
		900			665 412 x 660	Miracel/Smaract LAN	01.102.032.8	1 unit
		900			740 412 x 660	Miracel/Smaract 19" Server	01.102.032.1	1 unit
		900			740 412 x 660	Miracel/Smaract 19" Server	01.102.032.8	1 unit
		1000			740 412 x 660	Miracel 19" Server	01.102.032.1	1 unit
		1000			740 412 x 660	Miracel 19" Server	01.102.032.8	1 unit
600	800	730			478 x 560	Miracel LW 535	01.102.034.1	1 unit
800	800	730			678 x 560	Miracel LW 735	01.102.037.1	1 unit
600	900	830			478 x 660	Miracel LW 535	01.102.035.1	1 unit
800	900	830			678 x 660	Miracel LW 735	01.102.038.1	1 unit
600	800	735			478 x 560	Smaract LW 535	01.102.034.1	1 unit
600	900	835			478 x 660	Smaract LW 535	01.102.035.1	1 unit



SUN20007

19" Shelf QuickFix mounting without tools

- Quick and easy mounting without tools by hanging in 19" cut-outs
- Quick and easy fixing (one click) and removing (quarter turn) without tools
- Suitable for all racks and enclosures with 19" mounting hole extrusions (9.0 x 9.0 square holes)
- Depth-variable for use with different slot-in depths and special dimensions
- With perforation to optimize air supply

Material
Sheet steel, 1.0 mm

Finish
Final digit of order number .1:
Powder-coated texture, RAL 7035, light gray
Final digit of order number .8:
Powder-coated texture, RAL 7021 dark gray

Load rating
700 N static with even load distribution

Supply schedule
19" QuickFix Shelf
Mounting material

How supplied
Flat-packed kit

Note
Cannot be used for 19" t-slot extrusions!

W	H	D	U	d	w x l	Order no.	UP
				365 - 500	430 x 300	01.102.071.X	1 unit
				565 - 740	430 x 500	01.102.072.X	1 unit



MEC20138

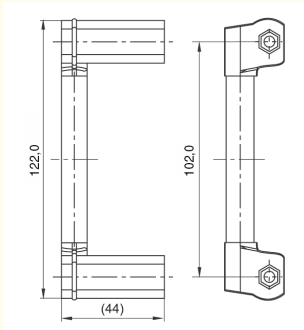
Handle

- Suitable for shelves and heavy-duty shelves
- With internal thread, M5

Material
Die-cast aluminum consoles
Handle extrusions of extruded aluminum
Cap made of ABS UL 94 HB

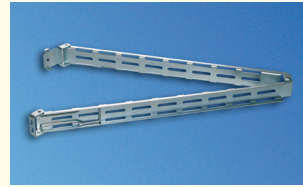
Finish:
Handle, powder-coated, gray-blue, RAL 5008/Cap, light gray, RAL 7035

Supply schedule
2 handles



MEC20111

W	H	D	U	d	w x l	For rack type	Order no.	UP
							00.050.503.1	1 set



MEC20154

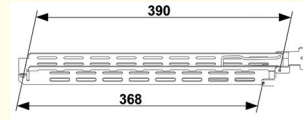
Cable Cantilever

- Swing-out from the rear, therefore free access to the rear side (only 3-piece)
- For easy mounting in rack/on the shelf; quick connecting to and disconnecting from shelf or rack with a spring clip
- Guarantees defined and kink-free cable management
- Minimum space requirement behind the pushed-in shelves, 40 mm

Material/finish
Sheet steel, 1.5 mm, zinc-passivated

Supply schedule
1 cable cantilever girder
Mounting material

How supplied
Flat-packed kit

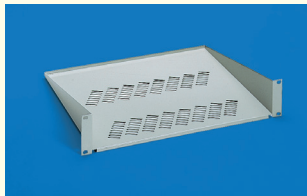


MEC88005

W	H	D	U	d	w x l	Type	Order no.	UP
						2-piece	05.040.096.0	1 unit

Dimensions in mm: W= Width
H = Height
D = Depth
h = installation height
d = useful depth
L = length
CW = Clear width
Conversion: 1 mm = 0.03937 inch

U = standard height unit
1 U = 44.45 mm
UP = unit of packaging
kg = weight
📦 = Express item
1 kg = 2.2046 pound



MIR00373

19" Shelf, 2 U Fixed

- For installation in racks with fixed 19" installation on the front
- Quick and easy mounting on 19" extrusions
- Also for swing frame in the 19" rack and 19" enclosure

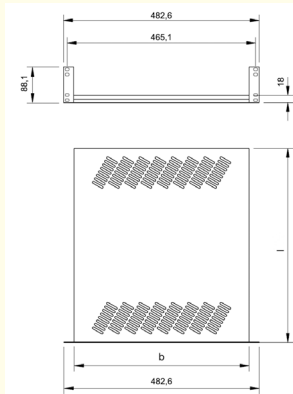
Finish/color
Powder-coated texture, RAL 7035 light gray

Material
Sheet steel, 1.5 mm

Load rating
200 N static

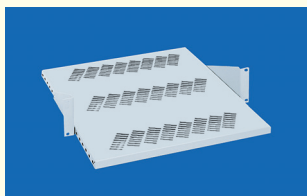
Supply schedule
1 shelf, fixed
Mounting material

How supplied
Flat-packed kit



MIR00375

W	H	D	w x l	For rack type	Order	UP
482.6	88.1	600/800/900/1000	442 x 280	Miracel/Smaract	01.113.736.1	1 unit
482.6	88.1	600/800/900/1000	442 x 380	Miracel/Smaract	01.113.737.1	1 unit
482.6	88.1	500/600/800	442 x 280	DoubleProRack	01.113.736.1	1 unit
482.6	88.1	500/600/800	442 x 380	DoubleProRack	01.113.737.1	1 unit
482.6	88.1	400/500/600	442 x 280	ConAct	01.113.736.1	1 unit
482.6	88.1	500/600	442 x 380	ConAct	01.113.737.1	1 unit



MIR00102

19" Shelf, 2 U, adjustable

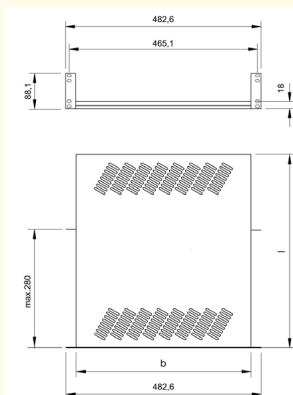
- For installation in racks with adjustable 19" installation on the front
- Quick and easy mounting on 19" extrusions
- Also for swing frame in the 19" rack and 19" enclosure
- Adjustable in increments of 25 mm in the depth

Material/finish
Sheet steel 1.5 mm, powder-coated texture

Color
RAL 7035 light gray

Load rating
200 N static

How supplied
Flat-packed kit



MIR00103

W	H	D	w x l	For rack type	Order n	UP
482.6	88.1	600/800/900/1000	442 x 280	Miracel/Smaract	01.113.409.1	1 unit
482.6	88.1	600/800/900/1000	442 x 380	Miracel/Smaract	01.113.410.1	1 unit

W	H	D	w x l	For rack type	Order	UP
482.6	88.1	600/800/900/1000	442 x 480	Miracel/Smaract	01.113.411.1	1 unit
482.6	88.1	500/600/800	442 x 280	DoubleProRack	01.113.409.1	1 unit
482.6	88.1	500/600/800	442 x 380	DoubleProRack	01.113.410.1	1 unit
482.6	88.1	600/800	442 x 480	DoubleProRack	01.113.411.1	1 unit
482.6	88.1	400/500/600	442 x 280	ConAct	01.113.409.1	1 unit
482.6	88.1	500/600	442 x 380	ConAct	01.113.410.1	1 unit
482.6	88.1	600	442 x 480	ConAct	01.113.411.1	1 unit



SCH00058

19" Drawer, installation on front

- For installation on front 19" extrusions
- For storing service documents
- Quick and easy mounting

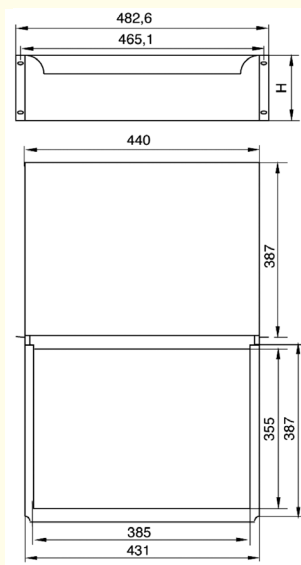
Material/finish
Drawer, sheet steel 1.0 mm, powder-coated texture
Telescopic slides, sendzimir zinc-coated

Color
Final digit of order number .1:
RAL 7035 light gray
Final digit of order number .8:
RAL 7021 dark gray

Load rating
150 N static

Supply schedule
1 19" drawer with lock, including key
1 pair of telescopic slides
Mounting material

How supplied
Preassembled

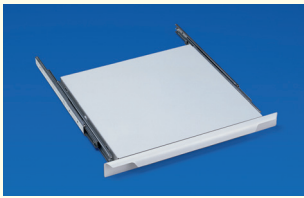


SCH00054

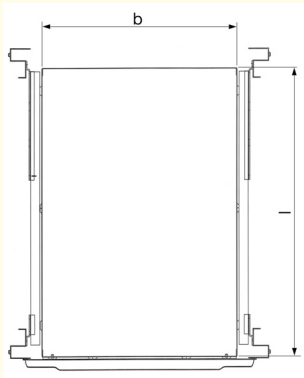
W	H	D	U	For rack type	Order	UP
482.6	43.6	600-1000	1	Miracel/Smaract/ DoubleProRack/ConAct	01.113.926.1	1 unit
482.6	88.1	600-1000	2	Miracel/Smaract/ DoubleProRack/ConAct	01.113.927.1	1 unit
482.6	88.1	600-1000	2	Miracel/Smaract/ DoubleProRack/ConAct	01.113.927.8	1 unit
482.6	132.5	600-1000	3	Miracel/Smaract/ DoubleProRack/ConAct	01.113.928.1	1 unit

Dimensions in mm: W= Width
H = Height
D = Depth
h = installation height
d = useful depth
U = standard height unit
1 U = 44.45 mm
UP = unit of packaging
kg = weight
WxL = Surface area
L = length
CW = Clear width
Express item

Conversion: 1 mm = 0.03937 inch 1 kg = 2.2046 pound



MEC00118



MEC20118

19" Shelf, 1 U Pull-out

- With handle
- Can also be used as writing board

Material/finish
Shelf, sheet steel, 1.0 mm
Telescopic slide, cold rolled steel

Finish/color
Powder-coated texture
RAL 7035 light gray

Load rating
200 N static

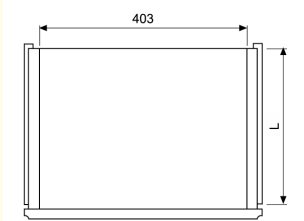
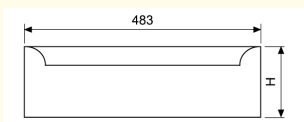
Supply schedule
1 shelf
1 pair of telescopic slides
Mounting material

How supplied
Preassembled

W	H	D _{Rack}	U	d	w x l	For rack type	Order no.	UP
482.6	43.6	600	1	365	403 x 400	Miracle/Smaract LAN	02.045.149.1	1 unit
482.6	43.6	600	1	440	403 x 400	Miracle/Smaract 19"	02.045.149.1	1 unit
482.6	43.6	800	1	565	403 x 400	Miracle/Smaract LAN	02.045.149.1	1 unit
482.6	43.6	800	1	640	403 x 600	Miracle/Smaract 19"	02.045.147.1	1 unit
482.6	43.6	900	1	665	403 x 600	Miracle/Smaract LAN	02.045.147.1	1 unit
482.6	43.6	900	1	740	403 x 600	Miracle/Smaract 19" Server	02.045.147.1	1 unit
482.6	43.6	1000	1	740	403 x 600	Miracle 19" Server	02.045.147.1	1 unit
482.6	43.6	600	1	435	403 x 400	DoubleProRack With door	02.045.149.1	1 unit
482.6	43.6	800	1	635	403 x 600	DoubleProRack With door	02.045.147.1	1 unit



SCH00057



SCH00053

19" Drawer with Lock Mounting on 19" installation, front and rear

- For mounting in racks with fixed 19" installation on the front and rear
- Full pull-out
- With lock

Material/finish
Drawer, sheet steel 1.0 mm, powder-coated texture
Telescopic slides, cold rolled steel, sendzimir zinc-coated

Color
Drawer, RAL7035 light-gray

Load rating
1 U - 200 N static
2 U - 400 N static
3 U - 400 N static
4 U - 400 N static

Supply schedule
1 19" drawer with lock, including key
1 pair of telescopic slides
Mounting material

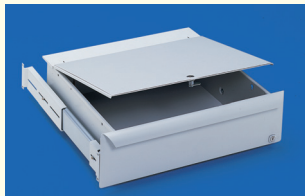
How supplied
Preassembled

W	H	D	U	d	L	For rack type	Order n	UP
482.6	43.6	600	1	365	400	Miracle/Smaract LAN	02.045.151.1	1 unit
482.6	43.6	600	1	440	400	Miracle/Smaract 19"	02.045.151.1	1 unit
482.6	87.1	600	2	440	400	Miracle/Smaract 19"	02.045.152.1	1 unit
482.6	131.5	600	3	440	400	Miracle/Smaract 19"	02.045.153.1	1 unit
482.6	176.0	600	4	440	400	Miracle/Smaract 19"	02.045.154.1	1 unit
482.6	43.6	800	1	565	400	Miracle/Smaract LAN	02.045.151.1	1 unit
482.6	87.1	800	2	565	400	Miracle/Smaract LAN	02.045.152.1	1 unit
482.6	131.5	800	3	565	400	Miracle/Smaract LAN	02.045.153.1	1 unit
482.6	176.0	800	4	565	400	Miracle/Smaract LAN	02.045.154.1	1 unit
482.6	43.6	800	1	640	600	Miracle/Smaract 19"	02.045.161.1	1 unit
482.6	43.6	900	1	665	600	Miracle/Smaract LAN	02.045.161.1	1 unit
482.6	87.1	900	2	665	600	Miracle/Smaract LAN	02.045.162.1	1 unit
482.6	131.5	900	3	665	600	Miracle/Smaract LAN	02.045.163.1	1 unit
482.6	176.0	900	4	665	600	Miracle/Smaract LAN	02.045.164.1	1 unit
482.6	43.6	900	1	740	600	Miracle/Smaract 19" Server	02.045.161.1	1 unit
482.6	87.1	900	2	740	600	Miracle/Smaract 19" Server	02.045.162.1	1 unit
482.6	131.5	900	3	740	600	Miracle/Smaract 19" Server	02.045.163.1	1 unit
482.6	176.0	900	4	740	600	Miracle/Smaract 19" Server	02.045.164.1	1 unit
482.6	43.6	1000	1	740	600	Miracle/Smaract 19" Server	02.045.161.1	1 unit
482.6	87.1	1000	2	740	600	Miracle/Smaract 19" Server	02.045.162.1	1 unit
482.6	131.5	1000	3	740	600	Miracle/Smaract 19" Server	02.045.163.1	1 unit
482.6	176.0	1000	4	740	600	Miracle/Smaract 19" Server	02.045.164.1	1 unit
482.6	43.6	600	1	435	400	DoubleProRack with door	02.045.151.1	1 unit
482.6	87.1	600	2	435	400	DoubleProRack with door	02.045.152.1	1 unit
482.6	131.5	600	3	435	400	DoubleProRack with door	02.045.153.1	1 unit
482.6	176.0	600	4	435	400	DoubleProRack with door	02.045.154.1	1 unit
482.6	43.6	800	1	635	600	DoubleProRack with door	02.045.161.1	1 unit
482.6	87.1	800	2	635	600	DoubleProRack with door	02.045.162.1	1 unit
482.6	131.5	800	3	635	600	DoubleProRack with door	02.045.163.1	1 unit
482.6	176.0	800	4	635	600	DoubleProRack with door	02.045.164.1	1 unit
482.6	43.6	500	1	460	400	DoubleProRack 19" no door	02.045.151.1	1 unit
482.6	87.1	500	2	460	400	DoubleProRack 19" no door	02.045.152.1	1 unit
482.6	131.5	500	3	460	400	DoubleProRack 19" no door	02.045.153.1	1 unit
482.6	176.0	500	4	460	400	DoubleProRack 19" no door	02.045.154.1	1 unit
482.6	43.6	600	1	560	400	DoubleProRack 19" no door	02.045.151.1	1 unit
482.6	87.1	600	2	560	400	DoubleProRack 19" no door	02.045.152.1	1 unit
482.6	131.5	600	3	560	400	DoubleProRack 19" no door	02.045.153.1	1 unit
482.6	176.0	600	4	560	400	DoubleProRack 19" no door	02.045.154.1	1 unit
482.6	43.6	700	1	660	600	DoubleProRack 19" no door	02.045.161.1	1 unit
482.6	87.1	700	2	660	600	DoubleProRack 19" no door	02.045.162.1	1 unit
482.6	131.5	700	3	660	600	DoubleProRack 19" no door	02.045.163.1	1 unit
482.6	176.0	700	4	660	600	DoubleProRack 19" no door	02.045.164.1	1 unit

Dimensions in mm: W = Width
H = Height
D = Depth
h = installation height
d = useful depth
L = length
CW = Clear width

U = standard height unit
1 U = 44.45 mm
UP = unit of packaging
kg = weight
WxL = Surface area
Express item

Conversion: 1 mm = 0.03937 inch 1 kg = 2.2046 pound



SCH00062

Writing Board For 19" drawer with lock

– For drawer depth 400 mm and 600 mm

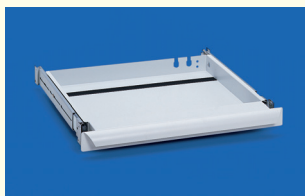
Material/finish
Sheet steel, 1.0 mm, powder-coated texture

Color
RAL 7035 light gray

Supply schedule
1 writing board
Mounting material

How supplied
Flat-packed kit

W	H	D	U	d	L	For rack type	Order no.	UP
					400		02.045.202.9	1 unit
					600		02.045.203.9	1 unit



SCH00059

19" Keyboard Drawer, 1 U For 19" keyboard

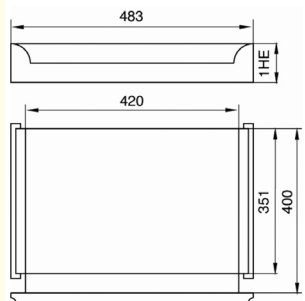
– With hand support
– With cable strain relief
– No telescopic slides locking

Material
Main unit, sheet steel, 1.0 mm
Front panel, sheet steel, 1.0 mm

Finish/color
Powder-coated texture, RAL 7035 light gray

Supply schedule
1 19" keyboard drawer, 1 U
1 pair of telescopic slides
Velcro strip for keyboard fixing
Mounting material

How supplied
Preassembled



SCH00055

W	H	D _{Rack}	U	d	L	For rack type	Order no.	UP
482.6	43.6	600	1	440		Miracel/Smaract 19"	02.011.101.1	1 unit
482.6	43.6	800	1	565		Miracel/Smaract LAN	02.011.101.1	1 unit
482.6	43.6	800	1	640		Miracel/Smaract 19"	02.011.101.1	1 unit
482.6	43.6	900	1	665		Miracel/Smaract LAN	02.011.101.1	1 unit
482.6	43.6	900	1	740		Miracel/Smaract 19" Server	02.011.101.1	1 unit
482.6	43.6	1000	1	740		Miracel 19" Server	02.011.101.1	1 unit
482.6	43.6	600	1	435		DoubleProRack with door	02.011.101.1	1 unit
482.6	43.6	800	1	635		DoubleProRack with door	02.011.101.1	1 unit



VHP00155

19" Compact Keyboard IBM-compatible keyboard with trackball

– Suitable for keyboard drawer
01.136.378.1
– Flat keyboard with 84 keys and integrated trackball

Electrical data
– Power supply:

+ 5 V/DC max. 18 mA
– Mains cable (1.6 m) with tapping for two 6-pin mini DIN plugs (PS/2)
– For Windows 98/ME/NT/2000/XP

Dimensions
Length x width x height
370 x 138.5 x 20 mm

W	H	S	U	A1	A2	Pmax	Model	Order no.	UP
							German	06.002.048.3	1 unit



MEC20162

Slot-in Rail Hang-on and screw-on

– For installation in 19" rack and enclosure
– Hang-on for quick and easy mounting
– Can also be screwed for heavier load ratings
– Can be screwed from inside (use in rack suites)
– Height setting possible for various main section heights

Material/finish
Sheet steel, 2.0 mm
Zinc-passivated, blue chrome-plated

Load rating
1000 N max., with even distribution

Supply schedule
2 slot-in rails
Mounting material

How supplied
In pairs

Note
When selecting the slot-in rail, please note the slot-in depth d of the rack or enclosure
4 19" extrusions are required for mounting



MEC20167



MEC20167

W	H	D _{Rack}	U	d	L	For rack type	Order no.	UP
		600		365	336	Miracel/Smaract	01.103.051.0	1 pair
		600		440	411	Miracel/Smaract	01.103.052.0	1 pair
		800		565	536	Miracel/Smaract	01.103.053.0	1 pair
		800		640	611	Miracel/Smaract	01.103.054.0	1 pair
		900		665	636	Miracel/Smaract	01.103.055.0	1 pair
		From 900		740	711	Miracel/Smaract/CoolTherm	01.103.056.0	1 pair



MEC20189

Aluminum Slot-In Rail Screw-on

– For installation in 19" rack and enclosure
– Can be screwed from inside (use in rack suites)
– Height setting possible for various main section heights

Material/finish
Extruded aluminum, 1.4 mm, polished

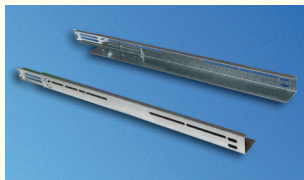
Load rating
700 N max., with even load distribution

- **Supply schedule**
2 slot-in rails
Mounting material

- **How supplied**
In pairs

- **Note**
When selecting the slot-in rail, please note the slot-in depth d of the rack or enclosure
4 19" extrusions are required for mounting

B _{Rack}	H _{Rack}	D _{Rack}	U	d	L	For rack type	Order no.	UP
	600			365	336	Miracel/Smaract	01.103.101.0	1 pair
	600			440	411	Miracel/Smaract	01.103.102.0	1 pair
	800			565	536	Miracel/Smaract	01.103.103.0	1 pair
	800			640	611	Miracel/Smaract	01.103.104.0	1 pair
	800			665	636	Miracel/Smaract	01.103.105.0	1 pair
	From 900			740	711	Miracel/Smaract/CoolTherm	01.103.106.0	1 pair
	500			285	254	ConAct	01.103.111.0	1 pair
	600			385	354	ConAct	01.103.112.0	1 pair
	600			435	403	DoubleProRack with door	01.103.118.0	1 pair
	800			635	603	DoubleProRack with door	01.103.119.0	1 pair
	500			460	428	DoubleProRack with door	01.103.122.0	1 pair
	600			560	528	DoubleProRack with door	01.103.123.0	1 pair
	700			660	628	DoubleProRack with door	01.103.124.0	1 pair



MEC20163



MEC20166

Slot-in runner, depth-variable, threaded connection

- For installation in 19" rack and enclosure
- Depth-variable
- Can be screwed from inside (use in rack suites)
- Height setting possible for various main section heights

- **Material/finish**
Sheet steel, 1.25 mm
Zinc-passivated, blue chrome-plated

- **Load rating**
200 N max., with even load distribution

- **Supply schedule**
2 basic rails
2 extension rails
Mounting material

- **How supplied**
In pairs

- **Note**
When selecting the slot-in rail, please note the slot-in depth d of the rack or enclosure
4 19" extrusions are required for mounting.

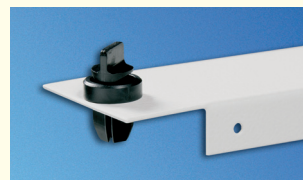
W	H	D	U	d	For rack type	Order no.	UP
	600			365-440	Miracel/Smaract	01.103.091.0	1 pair
	800-1200			565-740	Miracel/Smaract	01.103.092.0	1 pair
	900-1200			740	CoolTherm	01.103.092.0	1 pair
	600			385	ConAct	01.103.091.0	1 pair
	500-600			435-460	DoubleProRack	01.103.091.0	1 pair
	600-800			560-660	DoubleProRack	01.103.092.0	1 pair



MEC20179



MEC20180



MEC20178

19" Blanking Panel, QuickFix mounting without tools

- For covering free 19" spaces (cold-hot separation)
- Quick and easy assembly without tools (one click) and disassembly (quarter turn)
- Suitable for 9.5 x 9.5 square holes

- **Material**
Sheet steel, 1.0 mm

- **Finish**
Final digit of order number .1:
Powder-coated texture, RAL7035, light gray
Final digit of order number .8:
Powder-coated texture, RAL7021, dark gray

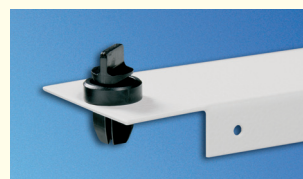
- **Supply schedule**
X (see ON for quantity) QuickFix
19" Blanking Panel
Mounting material

- **How supplied**
In sets (see ON for quantity);
fixing clips pre-mounted

W	H	D	U	d	L	For rack type	Order no.	UP
482.6	43.6		1			Powder-coated	01.103.301.X	6 units
482.6	88.1		2			Powder-coated	01.103.302.X	3 units
482.6	132.5		3			Powder-coated	01.103.303.X	2 units
482.6	265.9		6			Powder-coated	01.103.306.X	1 unit
482.6	399.2		9			Powder-coated	01.103.309.X	2 unit
482.6	932.6		21			Powder-coated	01.103.321.X	1 unit



MEC20181



MEC20178

19" Blanking Panel, QuickFix mounting without tools

- For orderly cable management in the rack internal space
- Quick and easy assembly without tools (one click) and disassembly (quarter turn)
- Suitable for 9.5 x 9.5 square holes

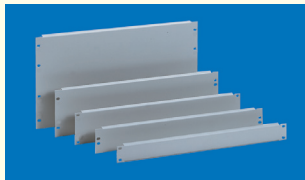
- **Material**
Sheet steel, 1.0 mm

- **Finish**
Final digit of order number .1:
Powder-coated texture, RAL7035, light gray
Final digit of order number .8:
Powder-coated texture, RAL7021, dark gray

- **Supply schedule**
6 QuickFix 19" blanking panel cable ports
Mounting material

- **How supplied**
In sets; fixing clips pre-mounted

W	H	D	U	d	L	For rack type	Order no.	UP
482.6	43.6		1			Powder-coated	01.103.331.X	6 units



CUD00005

19" Blanking Panel Screw-on

- For covering free 19" spaces (cold-hot separation)

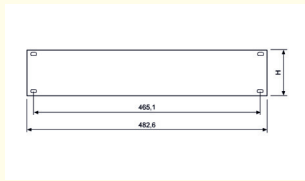
Material
Sheet steel, 1.0 mm

Finish
Final digit of order number .1:
Powder-coated texture, RAL7035, light gray
Final digit of order number .8:
Powder-coated texture, RAL7021, dark gray

Supply schedule
X (see ON for quantity) 19" Blanking Panel

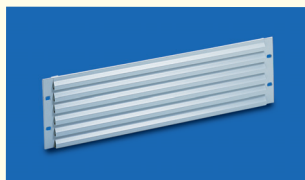
How supplied
In sets (see ON for quantity)

Note
Please also order front panel mounting material!



CUD00004

W	H	D	U	d	L	For rack type	Order no.	UP
482.6	43.6		1			Powder-coated	01.103.201.X	6 units
482.6	88.1		2			Powder-coated	01.103.202.X	3 units
482.6	132.5		3			Powder-coated	01.103.203.X	2 unit
482.6	265.9		6			Powder-coated	01.103.206.X	1 unit
482.6	399.2		9			Powder-coated	01.103.209.X	2 unit



LUF00217

19" Ventilation Front Panel

- For additional ventilation of 19" racks and 19" pedestals in accordance with IEC 297

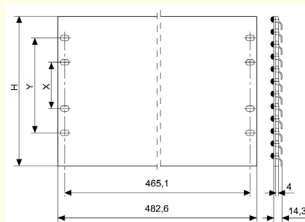
Material
Aluminum

Finish
Final digit of order number .1:
Powder-coated texture, light gray RAL 7035
Final digit of order number .6:
colorless anodized E 6 / EV 1

Supply schedule
1 ventilation front panel

How supplied
In units

Note
Please also order front panel mounting material.



MEC20110

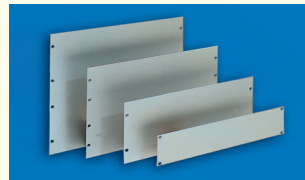
H	X	Y	U	Model	Order no.	UP
43.6	31.7	1		Powder-coated, RAL 7035	02.008.101.1	1 unit
43.6	31.7	1		Anodized	02.008.101.6	1 unit
132.5	57.1	3		Powder-coated, RAL 7035	02.008.103.1	1 unit
132.5	57.1	3		Anodized	02.008.103.6	1 unit

Dimensions in mm: W= Width
H = Height
D = Depth
h = installation height
d = useful depth
L = length
CW = Clear width

U = standard height unit
1 U = 44.45 mm
UP = unit of packaging
kg = weight
WxL = Surface area

= Express item

Conversion: 1 mm = 0.03937 inch 1 kg = 2.2046 pound



FR000005

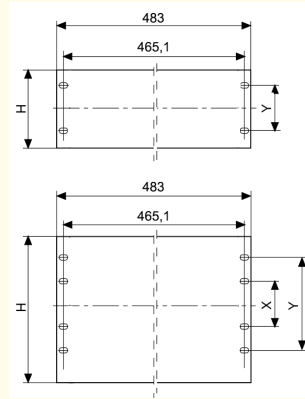
19" Front Panel, aluminum, 3 mm

Material/finish
Final digit of order number .0:
AlMg3 - F23 polished with lamination sheet
Final digit of order number .1:
AlMg3 - F23, powder-coated, RAL 7035, light gray
Final digit of order number .6:
AlMg3 - F23 EB (anodize-enabled), anodized E6/EV1 Final digit of order number .8:
AlMg3 - F23, powder-coated, RAL 7021, dark gray

Supply schedule
1 19" front panel

How supplied
In units

Note
Please also order front panel mounting material.



MEC20109

H	X	Y	U	Model	Order no.	UP
43.6	31.7	1		Polished	02.008.021.0	1 unit
88.1	76.2	2		Polished	02.008.022.0	1 unit
132.5	57.1	3		Polished	02.008.023.0	1 unit
177.0	101.6	4		Polished	02.008.024.0	1 unit
221.4	146.0	5		Polished	02.008.025.0	1 unit
265.9	76.2	190.4	6	Polished	02.008.026.0	1 unit
43.6	31.7	1		Powder-coated, RAL 7035	02.008.021.1	1 unit
88.1	76.2	2		Powder-coated, RAL 7035	02.008.022.1	1 unit
132.5	57.1	3		Powder-coated, RAL 7035	02.008.023.1	1 unit
177.0	101.6	4		Powder-coated, RAL 7035	02.008.024.1	1 unit
221.4	146.0	5		Powder-coated, RAL 7035	02.008.025.1	1 unit
265.9	76.2	190.4	6	Powder-coated, RAL 7035	02.008.026.1	1 unit
43.6	31.7	1		Powder-coated, RAL 7021	02.008.021.8	1 unit
88.1	76.2	2		Powder-coated, RAL 7021	02.008.022.8	1 unit
132.5	57.1	3		Powder-coated, RAL 7021	02.008.023.8	1 unit
43.6	31.7	1		Anodized	02.008.071.6	1 unit
88.1	76.2	2		Anodized	02.008.072.6	1 unit
132.5	57.1	3		Anodized	02.008.073.6	1 unit
177.0	101.6	4		Anodized	02.008.074.6	1 unit
221.4	146.0	5		Anodized	02.008.075.6	1 unit
265.9	76.2	190.4	6	Anodized	02.008.076.6	1 unit



FR000007

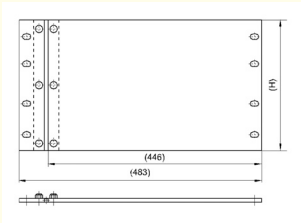
19" Front Panel, Hinged

- With 19" adapter and hinge

Material
Aluminum 3 mm

Finish
Anodized

Supply schedule
1 front panel, hinged
1 19" adapter
1 hinge



FR000006

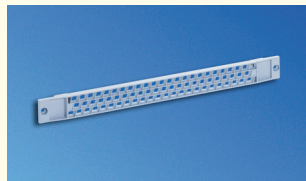
How supplied

Flat-packed kit

Note

Please also order front panel mounting material.

W	H	D	U	Model	Order no.	UP
			3	Anodized	01.110.780.6	1 unit
			6	Anodized	01.110.781.6	1 unit



LUF88006

19" Front Ventilation Panel

– For additional ventilation of 19" racks and 19" pedestals in acc. with IEC 297

Material/color

Final digit of order number .1:
ABS (UL 94 V0), light gray RAL 7035
Final digit of order number .9:
ABS (UL 94 V0), dark gray RAL 9011

Supply schedule

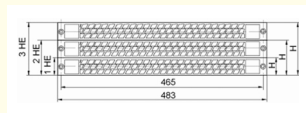
1 front ventilation panel
2 connection holders

How supplied

Flat-packed kit

Note

Please also order front panel mounting material.



LUF00093

W	H	D	U	Model	Order no.	UP
483	43.6		1		02.008.111.1	1 unit
483	43.6		1		02.008.111.9	1 unit



MEC20144

Panel Filter for 19" front ventilation panel

– For use in conjunction with the 19" front ventilation panel

Material/color

Filter fibers and screen cloth

Supply schedule

1 panel filter
Mounting material

How supplied

Flat-packed kit



MEC20149

W	H	D	U	Model	Order no.	UP
			1		02.008.131.9	1 unit



MEC20027

Document Holder

- Self-adhesive; use 6 mm bore holes with higher stresses
- For DIN A4 documents

Material

High-impact PS

Color

Gray

Supply schedule

1 document holder

W	L	D	Order no.	UP
264	236	30	05.016.045.0	1 unit

Dimensions in mm: W= Width
H = Height
D = Depth
h = installation height
d = useful depth
L = length
CW = Clear width

U = standard height unit
1 U = 44.45 mm
UP = unit of packaging
kg = weight
WxL = Surface area

= Express item

Conversion: 1 mm = 0.03937 inch 1 kg = 2.2046 pound

The right mounting set for every rack type

DCM	Miracel T-slot	Miracel Mount. holes	Miracel Server	Miracel Swing frame	Smaract T-slot	Smaract Mount. holes	Smaract Server	Double ProRack T-slot	Double ProRack Mount. holes	ConAct	Name	Order no.	UP
	●				●						Mounting set T-slot, M5 wide	05.041.320.9	1 set
		●				●					Mounting set Mount. holes, M5/BI 1.5	05.041.321.9	1 set
●			●	●			●				Mounting set Mount. holes M5/BI 2.5	05.041.325.9	1 set
								●			Mounting set dpr T-slot, M5 narrow	05.041.323.9	1 set
									●		Mounting set dpr Mount. holes, M5	05.041.322.9	1 set
										●	Mounting set ConAct M5	05.041.324.9	1 set

The right mounting set for front panel mounting Model: Z-form screw

DCM	Miracel T-slot	Miracel Mount. holes	Miracel Server	Miracel Swing frame	Smaract T-slot	Smaract Mount. holes	Smaract Server	Double ProRack T-slot	Double ProRack Mount. holes	ConAct	Name	Order no.	UP
	●				●						FP mounting set T-slot, M5 wide	05.041.335.9	1 set
		●				●				●	FP mounting set Mount. holes M5/BI 1.5	05.041.336.9	1 set
●			●	●			●		●		FP mounting set Mount. holes M5/BI 2.5	05.041.337.9	1 set
								●			FP mounting set T-slot, M5 narrow	05.041.338.9	1 set


Model: Countersunk screw+rosette

DCM	Miracel T-slot	Miracel Mount. holes	Miracel Server	Miracel Swing frame	Smaract T-slot	Smaract Mount. holes	Smaract Server	Double ProRack T-slot	Double ProRack Mount. holes	ConAct	Name	Order no.	UP
	●				●						FP mounting set T-slot, M5 wide	05.041.340.9	1 set
		●				●				●	FP mounting set Mount. holes M5/BI 1.5	05.041.341.9	1 set
●			●	●			●		●		FP mounting set Mount. holes M5/BI 2.5	05.041.342.9	1 set
								●			FP mounting set T-slot, M5 narrow	05.041.343.9	1 set

Dimensions in mm: W= Width
H = Height
D = Depth
h = installation height
d = useful depth

U = standard height unit
1 U = 44.45 mm
UP = unit of packaging
kg = weight

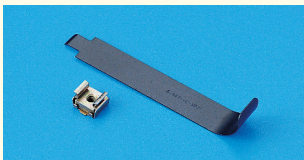
L = length

 = Express item

Conversion: 1 mm = 0.03937 inch 1 kg = 2.2046 pound

The right accessories for every rack type

DCM	Miracel T-slot	Miracel Mount. holes	Miracel Server	Miracel Swing frame	Smaract T-slot	Smaract Mount. holes	Smaract Server	Double ProRack T-slot	Double ProRack Mount. holes	ConAct	Name	Order no.	UP
	●				●						Spring nut M5 wide	01.350.431.9	1 set
								●			Spring nut M5 narrow	05.041.503.9	1 set
	●				●						Spring nut M6	01.350.405.9	1 set
		●				●				●	Caged nut M5/BI 1.5	05.041.513.7	1 set
●			●	●			●		●		Caged nut M5/BI 2.5	05.041.518.7	1 set
	●				●			●			Oval head screw Z-form M5 x 10	05.041.330.9	1 set
●		●	●	●		●	●		●	●	Oval head screw Z-form M5 x 16	05.041.331.9	1 set
	●				●			●			Countersunk screw M5 x 12 + rosette	05.041.203.9	1 set
●		●	●	●		●	●		●	●	Countersunk screw M5 x 16 + rosette	05.041.290.9	1 set



MIR00114

Mounting Tool for Caged Nut

- Makes clipping the caged nut into the extrusion easier


■ **Material**
Spring steel

■ **Supply schedule**
1 mounting tool

W	H	D	U	d	L	Model	Order no.	UP
							01.130.985.9	1 unit

Dimensions in mm: W= Width
H= Height
D= Depth
h= installation height
d= useful depth
L= length

U = standard height unit
1 U = 44.45 mm
UP = unit of packaging
kg = weight

 = Express item

Conversion: 1 mm = 0.03937 inch 1 kg = 2.2046 pound



MEC20125

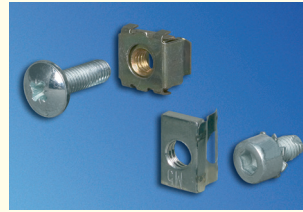
T-slot mounting set, M5, wide for Miracel® / Smaract®

– For mounting 19" front panels and 19" components

- **Supply schedule**
100 spring nuts, M5 wide
100 oval head screws, Z-form, M5 x 10
20 caged nuts M5 /plate, 1.5 mm
20 cylinder screws, M5 x 8

■ **How supplied**
Flat-packed kit

W	H	D	U	d	L	Model	Order no.	UP
							05.041.320.9	1 set



MEC20126

Mounting Holes Mounting Set, M5 For DoubleProRack®

– For mounting 19" front panels and 19" components

- **Supply schedule**
100 caged nuts M5 /plate, 2.5 mm
50 oval head screws, Z-form, M5 x 16
40 spring nuts, M5 narrow
40 cylinder screws, M5 x 10

■ **How supplied**
Flat-packed kit

W	H	D	U	d	L	Model	Order no.	UP
							05.041.322.9	1 set



MEC20126

Mounting Holes Mounting Set, M5 / Plate, 1.5 mm For Miracel® / Smaract®

– For mounting 19" front panels and 19" components

- **Supply schedule**
100 caged nuts M5 /plate, 1.5 mm
100 oval head screws, Z-form, M5 x 16
20 spring nuts, M5 wide
20 cylinder screws, M5 x 8

■ **How supplied**
Flat-packed kit

W	H	D	U	d	L	Model	Order no.	UP
							05.041.321.9	1 set



MEC20096

Mounting Holes Mounting Set, M5 For ConAct®

– For mounting 19" front panels and 19" components

- **Supply schedule**
50 caged nuts M5 /plate, 1.5 mm
50 oval head screws, Z-form, M5 x 16
50 cylinder screws, M5 x 8
25 locking nuts, M5

■ **How supplied**
Flat-packed kit

W	H	D	U	d	L	Model	Order no.	UP
							05.041.324.9	1 set



MEC20126

Mounting Holes-Server Extrusion Mounting Set M5 / Plate 2.5 mm for Miracel® / Smaract® / DCM®

– For mounting 19" front panels and 19" components

- **Supply schedule**
100 caged nuts M5 /plate, 2.5 mm
100 oval head screws, Z-form, M5 x 16
20 spring nuts, M5 wide
20 cylinder screws, M5 x 8

■ **How supplied**
Flat-packed kit

W	H	D	U	d	L	Model	Order no.	UP
							05.041.325.9	1 set



MEC20129

Front panel mounting set, T-slot, M5 wide For Miracel® / Smaract®

– For mounting 19" front panels and 19" components

- **Supply schedule**
Type 1:
50 spring nuts, M5 wide
50 oval head screws, Z-form, M5 x 10
Type 2:
50 spring nuts, M5 wide
50 countersunk screws, M5 x 12
50 rosettes

■ **How supplied**
Flat-packed kit



MEC20130

W	H	D	U	d	L	Model	Order no.	UP
						Type 1: Z-form screw	05.041.335.9	1 set
						Type 2: Screw+rosette	05.041.340.9	1 set



MEC20127

T-Slot Mounting set, M5, Narrow for DoubleProRack®

– For mounting 19" front panels and 19" components

- **Supply schedule**
100 spring nuts, M5 narrow
20 oval head screws, Z-form, M5 x 10
50 cylinder screws, M5 x 10
30 oval head screws, Z-form, M5 x 8

■ **How supplied**
Flat-packed kit

W	H	D	U	d	L	Model	Order no.	UP
							05.041.323.9	1 set



MEC20098

Front Panel Mounting Set, Mounting Holes, M5/Plate, 1.5 mm For Miracel® / Smaract® / ConAct®

– For mounting 19" front panels and 19" components

- **Supply schedule**
Type 1:
50 caged nuts M5 /plate, 1.5 mm
50 oval head screws, Z-form, M5 x 16
Type 2:
50 caged nuts M5 /plate, 1.5 mm
50 countersunk screws, M5 x 16
50 rosettes



MEC20097

■ **How supplied**
Flat-packed kit

W	H	D	U	d	L	Model	Order no.	UP
						Type 1: Z-form screw	05.041.336.9	1 set
						Type 2: Screw+rosette	05.041.341.9	1 set



MEC20098

Front Panel Mounting Set, Mounting Holes, M5/Plate, 2.5 mm
For Miracel®/Smaract®/DoubleProRack®/DCM®

– For mounting 19" front panels and 19" components

■ **Supply schedule**

Type 1:
50 caged nuts M5 /plate, 2.5 mm
50 oval head screws, Z-form, M5 x 16

Type 2:
50 caged nuts M5 /plate, 2.5 mm
50 countersunk screws, M5 x 16
50 rosettes

■ **How supplied**
Flat-packed kit



MEC20097

W	H	D	U	d	L	Model	Order no.	UP
						Type 1: Z-form screw	05.041.337.9	1 set
						Type 2: Screw+rosette	05.041.342.9	1 set



MEC20129

T-Slot Mounting Set, M5,
narrow for DoubleProRack®

– For mounting 19" front panels and 19" components

■ **Supply schedule**

Type 1:
50 spring nuts, M5 narrow
50 oval head screws, Z-form, M5 x 10

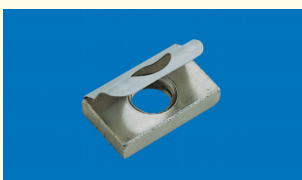
Type 2:
50 spring nuts, M5 narrow
50 countersunk screws, M5 x 12
50 rosettes

■ **How supplied**
Flat-packed kit



MEC20130

W	H	D	U	d	L	Model	Order no.	UP
						Type 1: Z-form screw	05.041.338.9	1 set
						Type 2: Screw+rosette	05.041.343.9	1 set



MEC00060

Spring Nut

– For clipping into T-slots at any position

Type 1: M5 wide
For Miracel / Smaract
T-nut size: 10 x 13 mm

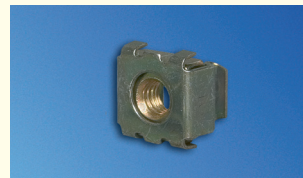
Type 2: M5 narrow
For DoubleProRack
T-nut size: 8 x 13 mm

Type 3: M6
For Miracel / Smaract
T-nut size: 10 x 13 mm

■ **Supply schedule**
50 spring nuts

■ **How supplied**
Flat-packed kit

W	H	D	U	d	L	Model	Order no.	UP
						Type 1: M5 wide	01.350.431.9	1 set
						Type 2: M5 narrow	05.041.503.9	1 set
						Type 3: M6	01.350.405.9	1 set



MEC20139

Caged Nut

– For clipping into extrusions with mounting holes

Type 1: Plate, 1.5 mm
For Miracel / Smaract / ConAct / SoHo

Type 2: Plate, 2.5 mm
For Miracel Server / Smaract Server / DoubleProRack mounting holes

■ **Supply schedule**
50 caged nuts

■ **How supplied**
Flat-packed kit

W	H	D	U	d	L	Model	Order no.	UP
						M5: Type 1: Plate 1.5 mm	05.041.513.7	1 set
						M5: Type 2: Plate 2.5 mm	05.041.518.7	1 set
						M6: Type 1: Plate 1.5 mm	05.041.514.7	1 set
						M6: Type 2: Plate 2.5 mm	05.041.519.7	1 set



MEC20140

Oval Head Screw

– IEC DIN 967

■ **Supply schedule**
50 oval head screws, Z-form

■ **How supplied**
Flat-packed kit

W	H	D	U	d	L	Model	Order no.	UP
						M5 x 10	05.041.330.9	1 set
						M5 x 16	05.041.331.9	1 set
						M6 x 10	05.041.332.9	1 set
						M6 x 16	05.041.333.9	1 set



MEC20141

Countersunk Screw + Rosette

– IEC DIN EN ISO 7047

■ **Supply schedule**
50 countersunk screws
50 rosettes

■ **How supplied**
Flat-packed kit

W	H	D	U	d	L	Model	Order no.	UP
						M5 x 12	05.041.203.9	1 set
						M5 x 16	05.041.290.9	1 set



MEC80020

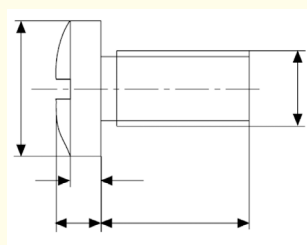
Self-Guiding Oval Head Screw

- DIN 7500
- Suitable for system accessories fixed on the inside of the 19" extrusions
- Suitable for 19" steel and 19" aluminum extrusions
- Easy screwing

Supply schedule
50 oval head screws, M6x10

How supplied
Flat-packed kit

W	H	D	U	d	L	Model	Order no.	UP
						M6 x 10	05.041.334.9	1 set



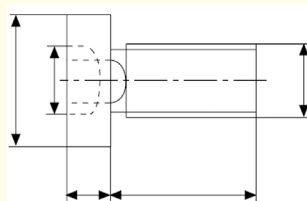
MEC00014

Oval Head Screw with Phillips head

- IEC DIN EN ISO 7045

Supply schedule
1 set of 50 units

W	H	D	U	d	L	Model	Order no.	UP
				8		M 5 no washer	05.041.611.8	1 set
				12		M 4 no washer	05.041.609.8	1 set
				12		M 5 with washer	05.041.613.8	1 set
				16		M 5 with washer	05.041.614.8	1 set
				16		M 6 with washer	05.041.616.8	1 set



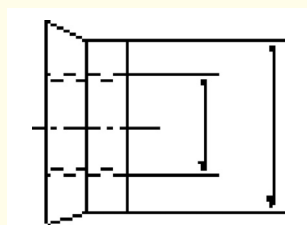
MEC00013

Cylinder Screw with hexagon head

- IEC ISO 4762 (modified)

Supply schedule
1 set of 50 units

W	H	D	U	d	L	Model	Order no.	UP
				8		M 5	05.041.574.8	1 set
				8		M 5 microencapsulated	05.041.575.9	1 set



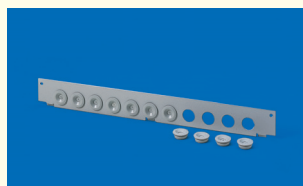
MEC20021

Tensiloc Nut

Material
Steel nickel-plated

Supply schedule
1 set of 50 units

W	H	D	U	d	L	Model	Order no.	UP
						M 5	05.041.533.8	1 set



HEI00234

Cable Entry Rail

Alternative to cable entry via brush strips when installing distributor box in open frames

Material/finish
Sheet steel, zinc-passivated

Supply schedule
1 cable port panel
11 bushing sockets
Mounting material

W	H	D	Model	Order no.	UP
				03.013.386.1	1 unit



ELM00058

Luminestra Rack Lighting

- Only for rack type Miracel W 700, W 800
- Mounting is made on the basic frame above the vertical extrusions
- With 13 watt fluorescent tube
- With on/off rocker switch
- With 2 m power supply lead and EURO plug
- Complete with mounting material
- Only with 123 mm front jumpering space

Color
White

Supply schedule
1 Luminestra rack lamp
2 mounting brackets
Mounting material

W	H	D	U	h	d	w	Model	Order no.	UP
70	20	555						01.131.227.9	1 unit



ELM00135

Compact Rack Lamp

Features
With magnetic mounting
Energy-saving lamp
Protective contact socket
On/off switch
3 m power supply lead
With cover panel

Approval
VDE, ICE

Protection rating IP20

Technical data
- Operating voltage
230 V / 50-60 Hz
- Lighting Compact fluorescent tube with integrated starter
- Power consumption: 11 W $\hat{=}$ 75 W bulb
- Light intensity: 900 Lm
- Interference suppression in acc. with VDE 0712, IEC 82
- Socket: 230 VAC / 16A
- Connections: 3-pole screw clamp
2.5 mm² with strain relief

W	H	D	U	h	d	w	Model	Order no.	UP
65	65	365						01.131.465.9	1 unit



HEI00379

Distribution Box

- For mounting installation technology DIN rail components, such as fuses, clamps, relays, etc.
- In the built-in status, the mounting level can be pulled out at the front, locked in position, and as a result, significantly simplifies the wiring of the individual components
- Not with "fixed installation" model
- On request: Delivered assembled and wired
- Further versions and models on request
- Installation space for up to 22 pieces of equipment with 18 mm width each
- Mounting of the TS35 DIN rail on several levels with simple plug-in connection
- Not with "fixed installation" version
- "Snap-in" mounting of DIN rail components
- Easy access to the protective earth and neutral conductor rails from the front
- Various positioning options prepared or N and PE rails
- Not with "fixed installation" version
- Cable entry at the rear via double brush strip (optionally via bushing sockets)
- Cable strain relief on the inside and therefore accessible from the front
- Labeling strips on the front, above and below the installation space
- Installation options for power distribution with 230 V AC, but also in the low voltage range (e.g. 48 V DC)
- 19" slot-in, 3 U, depth 150 mm

Material/finish

- Covers, powder-coated texture, RAL 7035 light gray
- Main unit, zinc-passivated sheet steel

Supply schedule

- 1 distribution box
- Including N and PE rails, cable entry, cable strain relief, empty panel covers and earth set

How supplied

- Fully assembled

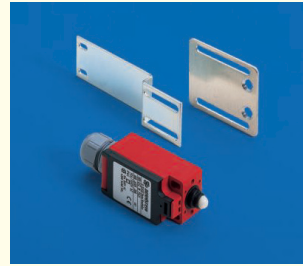
W	H	D	U	19"	Model	Order no.	UP
482.6	134	150	3	●	Pull-out	03.013.385.1	1 unit
482.6	134	150	3	●	Fixed installation	03.013.470.1	1 unit



HEI20282

Dimensions in mm: W= Width
 H = Height
 D = Depth
 h = installation height
 d = useful depth
 L = length
 CW = Clear width
 U = standard height unit
 1 U = 44.45 mm
 UP = unit of packaging
 kg = weight
 WxL = Surface area
 = Express item

Conversion: 1 mm = 0.03937 inch 1 kg = 2.2046 pound



ELM00137

Door Contact Switch

- On/off switch, 4 A, 230 V ~
- Activation with door opening and closing

Supply schedule

- 1 door contact switch (not wired)
- 1 mounting brackets
- Mounting material

W	H	S	U	h	d	kg	Model	Order no.	UP
								01.110.722.9	1 unit



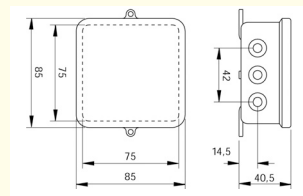
ELM00033

Cable Junction Box

- For 230V electro-installation on-site
- As fixed-location exchange point
- Quick and easy mounting

Supply schedule

- 1 cable junction box



ELM00034

W	H	D	U	h	d	w	Model	Order no.	UP
								00.078.720.9	1 unit



ELM00128

Modular Terminal Box

- For 230V electro-installation on-site
- With series terminal, 8 x 4² mm
- Pg 11/16 entry
- IP 54

Material

- High-impact, fire-resistant polystyrene

Supply schedule

- 1 modular terminal box
- 4 Pg compression glands, Pg11

W	H	S	U	h	d	kg	Model	Order no.	UP
								01.117.521.9	1 unit



ELM00114

Equipotential Bonding Bar

- For central earthing of all protective conductors
- With sealing cover
- Connection options:
 - 1 x round conductor 8-10 mm Ø
 - 1 x flat conductor up to 30 mm wide or round conductor 8-10 mm Ø
 - 7 x single or several-wire conductors up to 16 mm² or fine wire conductor up to 10 mm²

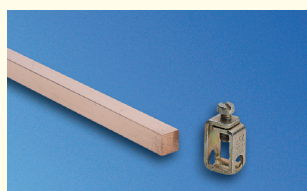
Material

Base and cover, high-impact plastic
Brass nickel-plated contact strip

Supply schedule

1 equipotential bonding bar

W	H	S	U	h	d	kg	Model	Order no.	UP
								01.117.524.3	1 unit



ELM00068

Earthing Bar

- For safe earthing and equipotential bonding of equipment and installation components

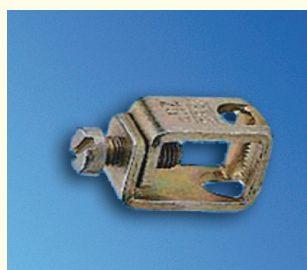
Material

Electrolyte copper, 9x9

Supply schedule

1 earthing bar
2 brackets
Mounting material

W	H	S	U	h	d	kg	Model	Order no.	UP
			24				For DoubleProRack	01.240.546.9	1 unit
			21				For DoubleProRack	01.240.545.9	1 unit
			18				For DoubleProRack	01.240.544.9	1 unit
			15				For DoubleProRack	01.240.543.9	1 unit
			45				For Miracel	01.110.709.9	1 unit
			41				For Miracel	01.110.708.9	1 unit
			12				For Miracel	01.110.703.9	1 unit



DOP20016

Contact Clamp

- For safe and secure connection of equipment and installation components with the earthing bar
- For cables up to 25 mm²

Supply schedule

20 contact clamps

W	H	S	U	h	d	kg	Model	Order no.	UP
								01.110.715.9	20 unit

Dimensions in mm: W= Width
H = Height
D = Depth
h = installation height
d = useful depth
L = length

U = standard height unit
1 U = 44,45 mm
UP = unit of packaging
kg = weight

= Express item

Conversion: 1 mm = 0.03937 inch 1 kg = 2.2046 pound